



# GF-TADs

GLOBAL FRAMEWORK FOR THE  
PROGRESSIVE CONTROL OF  
TRANSBOUNDARY ANIMAL DISEASES



Food and Agriculture  
Organization of the  
United Nations

**OIE**  
WORLD ORGANISATION  
FOR ANIMAL HEALTH



## The Regional GF- TADs governance and activities



# Outline of the presentation

- **GF-TADs priorities and structure**
- **The 3<sup>rd</sup> External Evaluation**
- **Previous 2 years work plan**
- **Updating the terms of reference, regional strategy and next 2-year operational plan**



## What is the GF-TADs ?

- The Global Framework for the progressive control of Transboundary Animal Diseases (GF-TADs) is a **joint FAO/OIE initiative**, launched in 2004.
- At the regional level in Asia and the Pacific, the aim has been to enhance the prevention, detection and control of transboundary animal diseases (TADs) by providing a platform with the combined strengths of both international organizations working with their members to achieve agreed common objectives.
- GF-TADs is a coordination mechanism which can empower regional alliances in the fight against transboundary animal diseases (TADs), assisting to give direction and harmonization of capacity building activities and programmes for the control & prevention of certain TADs based on regional priorities.



# Global Level

## Animal diseases

- **Rinderpest (post eradication)**
- **Highly Pathogenic Avian Influenza (HPAI)**
- **Foot and Mouth Disease (FMD)**
- ***Peste des Petits Ruminants (PPR)***
- **Rabies**
- **Rift Valley Fever (RVF)**
- **African Swine Fever (ASF)**

## Cross cutting topics

- The reinforcement of Veterinary Services (VS)
- Strengthening the GF-TADs supporting structures (Global Tools) and making them sustainable
- Strengthening the internal GF-TADs structures, procedures and coordination and ensuring the sustainability at global and regional levels



## Regional Level

### Priority diseases - Asia and the Pacific

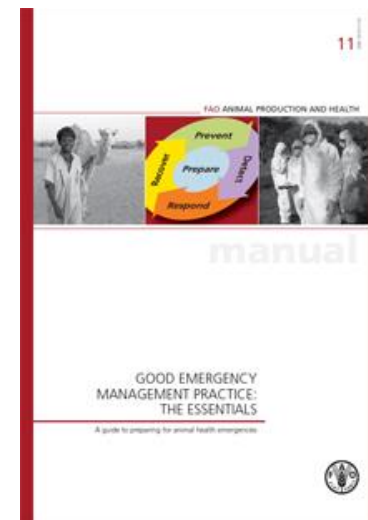
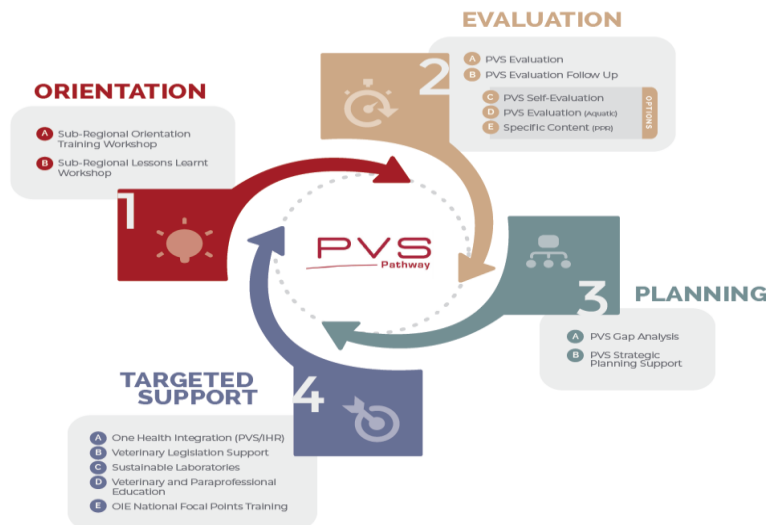
|  | ASEAN<br>(South East Asia) | SAARC<br>(South Asia) | SPC<br>(Pacific)           | E. Asia |
|--|----------------------------|-----------------------|----------------------------|---------|
| <b>FMD</b>   | ○                          | ○                     | Preventative<br>activities | ○       |
| <b>Avian Influenza</b>                                 | ○                          | ○                     |                            | ○       |
| <b>Swine diseases<br/>(ASF, CSF, PRRS and<br/>PED)</b> | ○                          |                       |                            | ○       |
| <b>PPR</b>   |                            | ○                     |                            |         |
| <b>Rabies</b>  | ○                          | ○                     |                            | ○       |



## Cross-cutting Topics

# The reinforcement of Veterinary Services

- The reinforcement of Veterinary Services is crosscutting a topic of the Global GF-TADs Action Plan
- The FAO and OIE have several useful tools that can help strengthen the veterinary services such as the OIE PVS Pathway and the FAO GEMP.





# GF-TADs: Sub-regional Meeting in 2015/16



◆ SAARC



◆ East Asia



◆ ASEAN



◆ SPC





## Members and Sub-regional organisations

| Member                                       | OIE Members | FAO Members | ASEAN     | SAARC    | SPC<br>(26 members in total) | (East Asia) | APHCA     |
|--|-------------|-------------|-----------|----------|------------------------------|-------------|-----------|
| CHINESE TAIPEI                               | x           |             |           |          |                              |             |           |
| JAPAN  | x           | x           |           |          |                              |             |           |
| KOREA (REP. OF ~)                            | x           | x           |           |          |                              |             |           |
| KOREA (DEM. PEOPLE'S REP. OF ~)              | x           | x           |           |          |                              |             |           |
| MONGOLIA                                     | x           | x           |           |          |                              |             |           |
| CHINA (PEOPLE'S REP. OF ~)                   | x           | x           |           |          |                              |             |           |
| BRUNEI                                       | x           | x           |           |          |                              |             |           |
| CAMBODIA                                     | x           | x           |           |          |                              |             |           |
| INDONESIA                                    | x           | x           |           |          |                              |             |           |
| LAOS   | x           | x           |           |          |                              |             |           |
| MALAYSIA                                     | x           | x           |           |          |                              |             |           |
| MYANMAR                                      | x           | x           |           |          |                              |             |           |
| PHILIPPINES                                  | x           | x           |           |          |                              |             |           |
| SINGAPORE                                    | x           | x           |           |          |                              |             |           |
| THAILAND                                     | x           | x           |           |          |                              |             |           |
| VIETNAM                                      | x           | x           |           |          |                              |             |           |
| BANGLADESH                                   | x           | x           |           |          |                              |             |           |
| BHUTAN                                       | x           | x           |           |          |                              |             |           |
| INDIA  | x           | x           |           |          |                              |             |           |
| MALDIVES                                     | x           | x           |           |          |                              |             |           |
| NEPAL  | x           | x           |           |          |                              |             |           |
| PAKISTAN                                     | x           | x           |           |          |                              |             |           |
| SRI LANKA                                    | x           | x           |           |          |                              |             |           |
| FIJI   | x           | x           |           |          |                              |             |           |
| MICRONESIA (FED. STATES OF ~)                | x           | x           |           |          |                              |             |           |
| NEW CALEDONIA                                | x           | x           |           |          |                              |             |           |
| PAPUA NEW GUINEA                             | x           | x           |           |          |                              |             |           |
| VANUATU                                      | x           | x           |           |          |                              |             |           |
| SAMOA  |             | x           |           |          |                              |             |           |
| AUSTRALIA                                    | x           | x           |           |          |                              |             |           |
| NEW ZEALAND                                  | x           | x           |           |          |                              |             |           |
| SOLOMON ISLANDs                              |             | x           |           |          |                              |             |           |
| South Pacific Island Countries & Territories |             | x           |           |          |                              |             |           |
| TIMOR LESTE                                  | x           | x           |           |          |                              |             |           |
| IRAN (+ME)                                   | x           | x           |           |          |                              |             |           |
| <b>Total (32)</b>                            | <b>32</b>   |             | <b>10</b> | <b>7</b> | <b>6</b>                     | <b>(6)</b>  | <b>18</b> |

+ Afganistan





## 3<sup>rd</sup> External Evaluation Questions Asked

- What are the needs (explicit and implicit) of countries in preventing and controlling TADs ?
- What is the relevance of the GF-TADs initiative and what is the value-added to FAO and OIE in meeting their respective mandates, coordinating actions in the prevention and control of TADs and strengthening national animal health systems?
- To what extent is the current set up of the GF-TADs initiative appropriate and effective in responding to the evolving needs in preventing and controlling TADs and addressing regional and national animal health systems and priorities
- Does GF-TADs make a difference?!



## Conclusion 1

**What are the needs (explicit and implicit) of countries in preventing and controlling TADs?**

- TADs continue to be relevant and GF-TADs is a platform with unique features.
- Regional approach is justified.
- Priority setting for diseases is useful but not sufficiently flexible.



## Conclusion 2

**What is the relevance of the GF-TAD initiative and what is the value-added to FAO and OIE in meeting their respective mandates, coordinating actions in the prevention and control of TADs and strengthening national animal health systems?**

- Partnerships have been strengthened but remain variable and not fully exploited.
- Linkages to Tripartite Agreement are weak in some areas.



## Conclusion 3

**To what extent is the current set up of the GF-TAD initiative appropriate and effective in responding to the evolving needs in preventing and controlling TADs and addressing regional and national priorities?**

- Governance is generally passive and distant.
- Effectiveness at global level suffers from the lack of agreed managerial processes.
- Tools remain under-exploited and RAHCs (Regional AH Centers) and RSU (Regional Support Units) lack operational relevance.
- Management Committee and the Secretariat are critical for the functioning of GF-TADs



## Conclusion 4

### Does GF-TADs make a difference and continue to do so in the future?

- GF-TADs reach at country level is limited.
- There is limited strategic and financial commitment from parent organisations.
- Organisational structure and financial means are insufficient to reach next level of impact.
- Extent of cross-regional exchange and joint learning is limited.



## Conclusions specific to Asia Pacific

- Large region with diverse needs
- High degree of regional coordination achieved
- Sub-regional activities and meetings effective
- Some donor support, now reduced
- Effective epi and lab networks
- Strong coordination through SEACFMD
- Limited resources for regional SEC and activities



## How to address these conclusions?

- What can we improve?
- Do we accept there will be limitations that are beyond our influence?
- How can we build on the successes and maintain momentum?
- Today we are facing many challenges with COVID-19 pandemic. How does and will this impact coordination on TADs control in the next 2 years? Or longer???



## Recommendations from 10<sup>th</sup> RSC Meeting

- Develop and implement a monitoring and evaluation framework in consultation with the Global GF-TADs secretariat as recommended in the 3rd external evaluation.
- Finalize the Regional Steering Committee Terms of Reference with the GF-TADs management committee and share with the Members of RSC.
- Strengthen networking and facilitate exchange between Regional Steering Committees to support information exchange and joint learning between the secretariats.
- Strengthen the link and communication between Regional secretariats for GF-TADs and the Global Secretariat for GF-TADs by attending, where possible each other's meetings and keeping in contact through emails, teleconferences or other digital communication.





## Biennial Work Plan 2018-2020

### 1. Governance

- i. The operation and management of the Regional Steering Committee will basically follow the draft TORs, until otherwise guided by the Global GF-TADs management.
- ii. Sub-regional activities were organized in the 4 sub-regions including a sub-regional GFTADs meeting in 2019 for SAARC, ASEAN, SPC and East Asia which took advantage of other meetings.
- iii. Several regional GFTADs activities were co-organized by FAO/OIE for specific TADs as well as emergency preparedness.
- iv. Australia, New Zealand and Timor Leste were be included to the sub-regional activities under GFTADs for SPC.
- v. Each subregion developed a work plan for implementing TADs control activities.
- vi. More regular communication and collaboration between the RSC and the Global GF-TADs Secretariat with plans for an updated terms of reference and GFTADs strategy.



## Biennial Work Plan 2018-2020

### 2. Priority diseases

|   | ASEAN | SAARC | SPC                                      | E. Asia |
|---|-------|-------|--|---------|
| <b>FMD</b>                                  | ○     | ○     | Preparedness and preventative activities | ○       |
| <b>Avian Influenza</b>                      | ○     | ○     |  | ○       |
| <b>Swine diseases (CSF, PRRS, PED, ASF)</b> | ○     |       |  | ○       |
| <b>PPR</b>                                  |       | ○     |  | ○       |
| <b>Rabies</b>                               | ○     | ○     |  | ○       |



## Biennial Work Plan 2018-2020

### 3. Tools to support Regional GF-TADs

- i. Develop, review or revise (sub-) regional strategy / roadmap for specific TADs control. (*Pending*)
- ii. Regular activities of leading laboratories and Epi-/Lab- network for each priority TAD in each sub-region. (*done*)
- iii. Encourage member countries to apply for PVS tools and/or other capacity building tools available from FAO, OIE or other developing partners.
- iv. Set up the Standing Group of Experts on ASF. SGE – ASF was officially established in April 2019 with regular coordination within Asia and with Europe SGE-ASF over last 2 years.

(based on success of SGE-ASF model, could this be expanded to other TADs?)



## Biennial Work Plan 2018-2020: 4. Implementation plan

|                                |  |             |           |             |           |           |           |             |           |   |
|--------------------------------|--|-------------|-----------|-------------|-----------|-----------|-----------|-------------|-----------|---|
| <b>Objective 1</b>             | Overall coordination and collaboration   |             |           |             |           |           |           |             |           |   |
| <b>Expected Product/Result</b> | <ol style="list-style-type: none"> <li>1. Establish the Biennial Work Plan and regularly update it</li> <li>2. Strengthen cooperation between RSC and RSO/RSU, and organize sub-regional GF-TADs meetings in 2019, if agreed.</li> <li>3. Strengthen cooperation with the Global GF TADs secretariat and other Global Programmes</li> <li>4. Strengthen information sharing amongst partners and stakeholders</li> </ol> |             |           |             |           |           |           |             |           |   |
| <b>Activities</b>              |  | <b>2018</b> |           | <b>2019</b> |           |           |           | <b>2020</b> |           | <b>Lead organization or applicant partner</b> |
|                                |  | <b>Q3</b>   | <b>Q4</b> | <b>Q1</b>   | <b>Q2</b> | <b>Q3</b> | <b>Q4</b> | <b>Q1</b>   | <b>Q2</b> |   |
| <b>Region</b>                  | 1. RSC meeting of GF-TAD   | x           |           |             |           |           |           |             |           |   |
|                                | 2. Asia-Pacific Multisectoral workshop on Zoonoses in 2019   |             |           | x           |           |           |           |             |           |   |
|                                | 3. Update the Regional Webpage on GF-TADs  |             |           |             |           |           |           |             |           |   |
| <b>ASEAN</b>                   | 1 Sub-regional GF-TADs meeting   |             |           |             | x         |           |           |             |           |   |
| <b>SAARC</b>                   | 1 Sub-regional GF-TADs meeting   |             |           |             |           | x         |           |             |           |   |
| <b>SPC</b>                     | 1 Sub-regional GF-TADs meeting   |             |           |             |           |           | x         |             |           |   |
| <b>E. Asia</b>                 | 1 Sub-regional GF-TADs meeting   |             |           |             |           | x         |           |             |           |   |



# Updating the Terms of Reference

## Key questions:

- Membership – ensure adequate representation among regional OIE & FAO members
- Expectations of the Regional Steering Committee members
- What do we expect to be achieved through the GFTADs mechanism?
- What do regional members consider the role of FAO/OIE?
- How should technical and financial partners or other animal health related organisations be involved with GFTADs?



## Plans for 2020 - 2022

- Is the current work plan template suitable?
- Have the priorities changed since 2018 (other than *risk of ASF to ASF*)
- We will need a new regional strategy – is a 5-year strategy (2021 – 2025) with a 2-year work plan preferred?



# Your feedback is needed