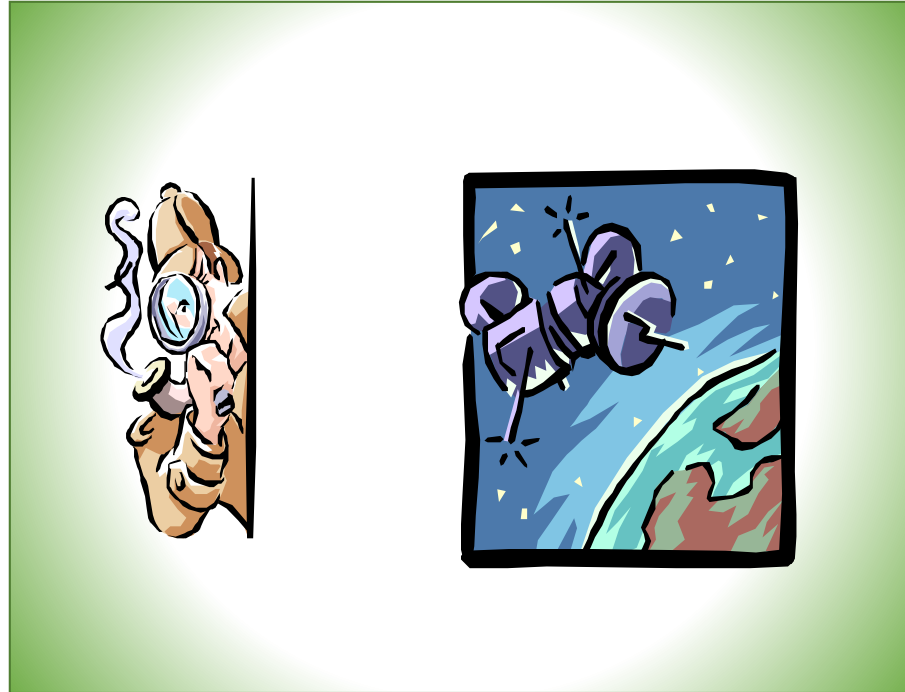


Integrated Surveillance

Priority Animal Diseases (TADs) and endemic production diseases



Chris Bartels
International Team Leader
Livestock Commercialization Project

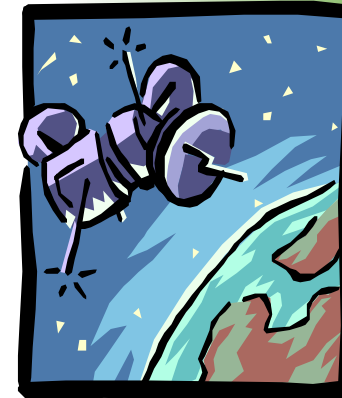
Integrated Surveillance

Priority Animal Diseases (TADs) and endemic production diseases

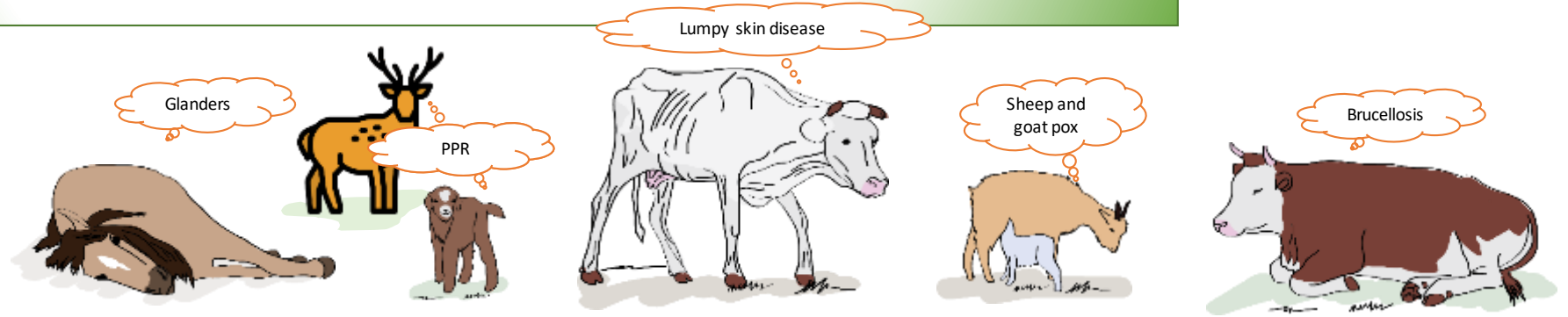
Data need to understand risks and routes of disease transmission

OBJECTIVES

1. Evidence of absence
2. Early detection known diseases and emerging diseases
3. Following trend in prevalence of known diseases



Establishing a Veterinary Diagnostic Laboratory Network including quality management and in-house training





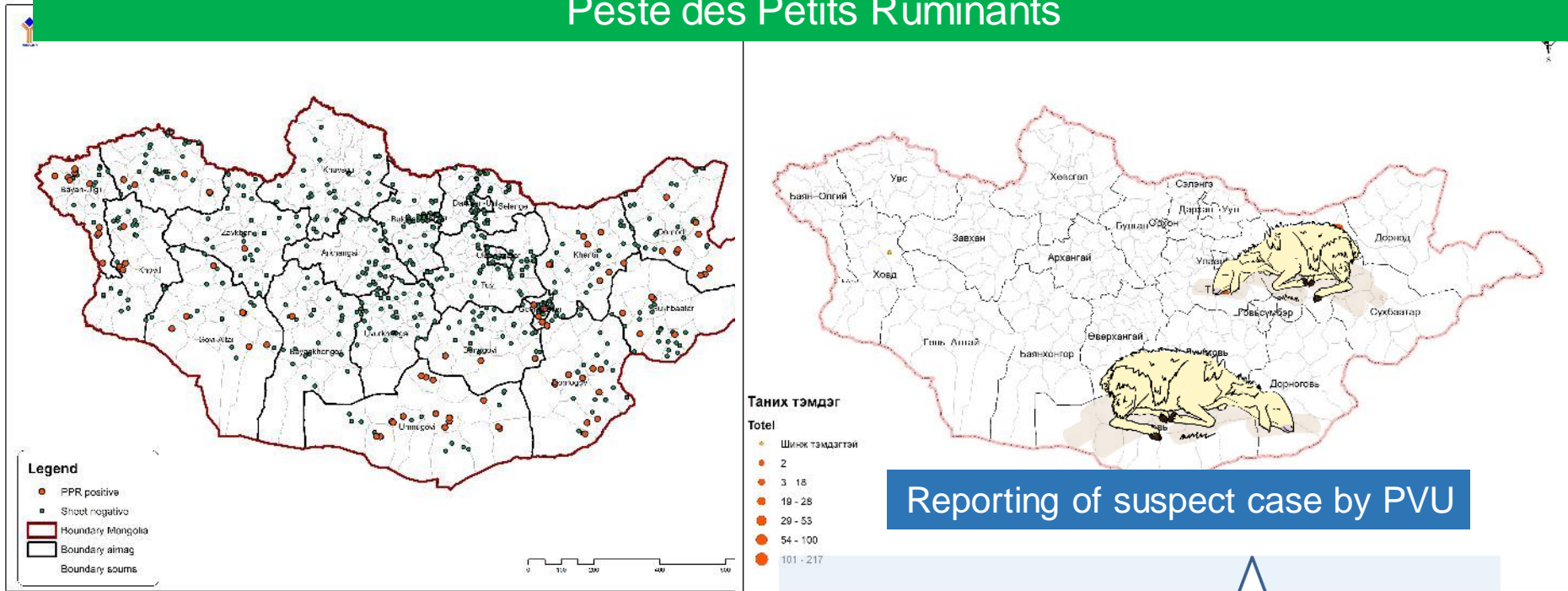
Active
surveillance



Passive
surveillance

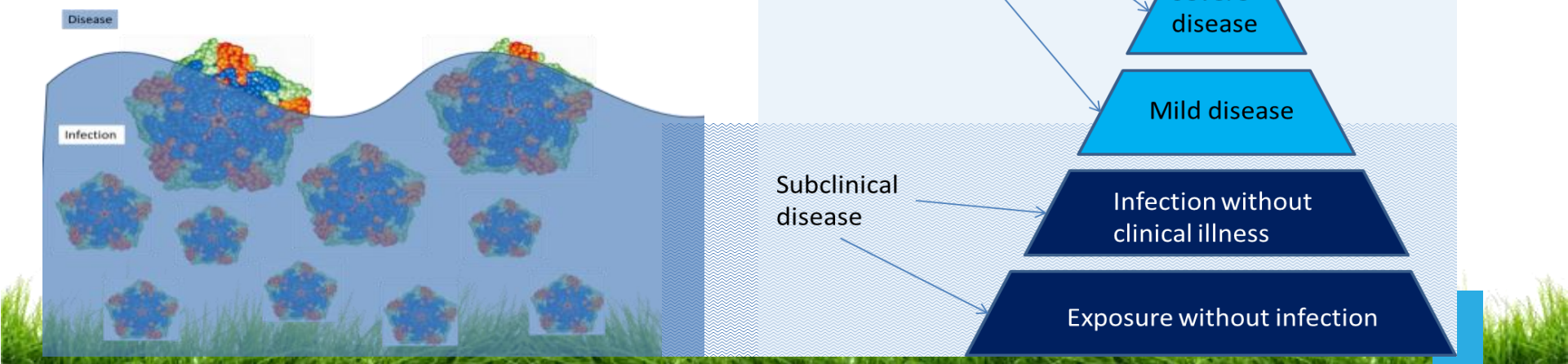


Peste des Petits Ruminants



Reporting of suspect case by PVU

Sero-survey priority animal diseases





Passive surveillance

Disease a-specific
Little control over design –
not representative
Wide coverage
Potentially timely
Small costs

Post-vaccination monitoring for
priority animal diseases

Sero-survey priority animal diseases

Wildlife surveillance
(cross-sectional and sero-survey)

Slaughterhouse sero-survey

Risk assessment reports
(Soum, Aimaig)

Zero reporting by PVUs at time of
outbreaks

PVU Clinical examination
when applying
for Veterinary Certificate

PVU Clinical examination
as part of herd visits

Reporting of suspect case by PVU

Helpline for Herders and PVUs

Active surveillance

Disease specific

Control over design –
representative

High inputs
(time, people, money)

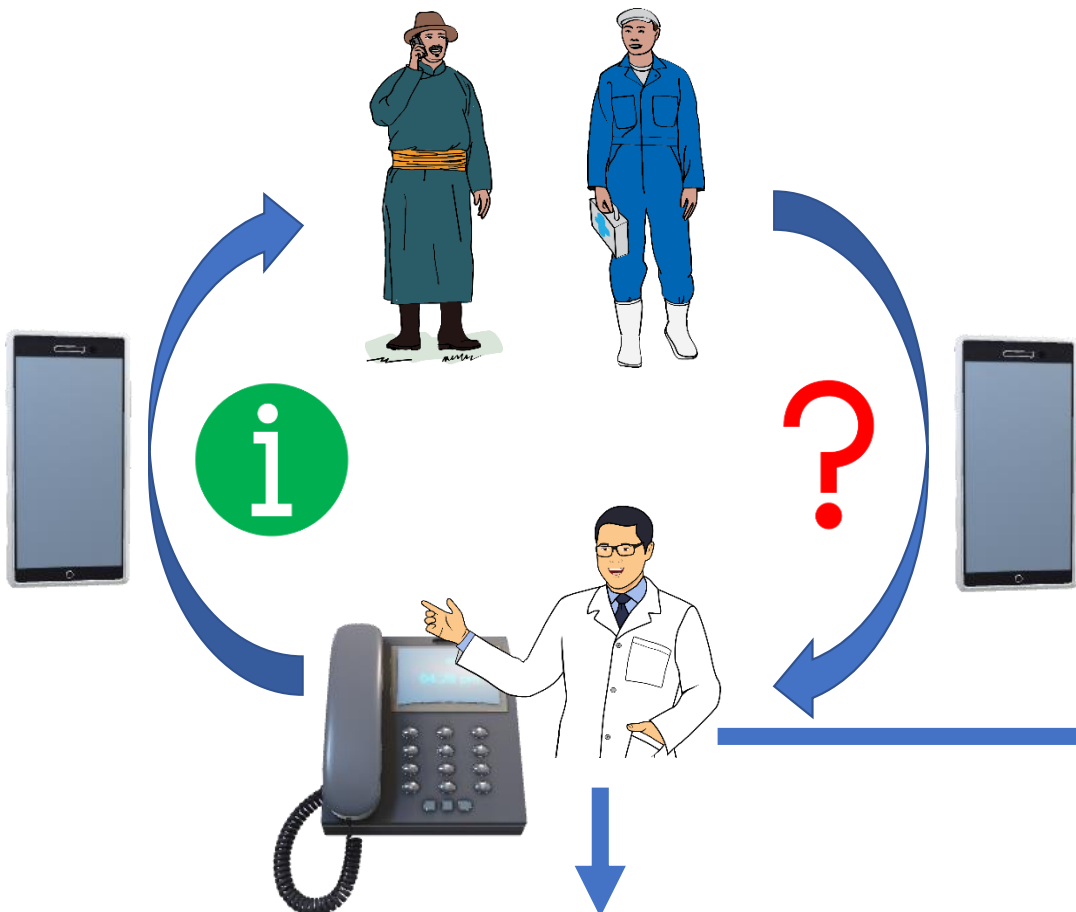
Long duration for
sampling and testing

Coverage limited





ТУСЛАМЖИЙН УТАС



МАЛ ЭМНЭЛГИЙН
НЭГДСЭН СИСТЕМ



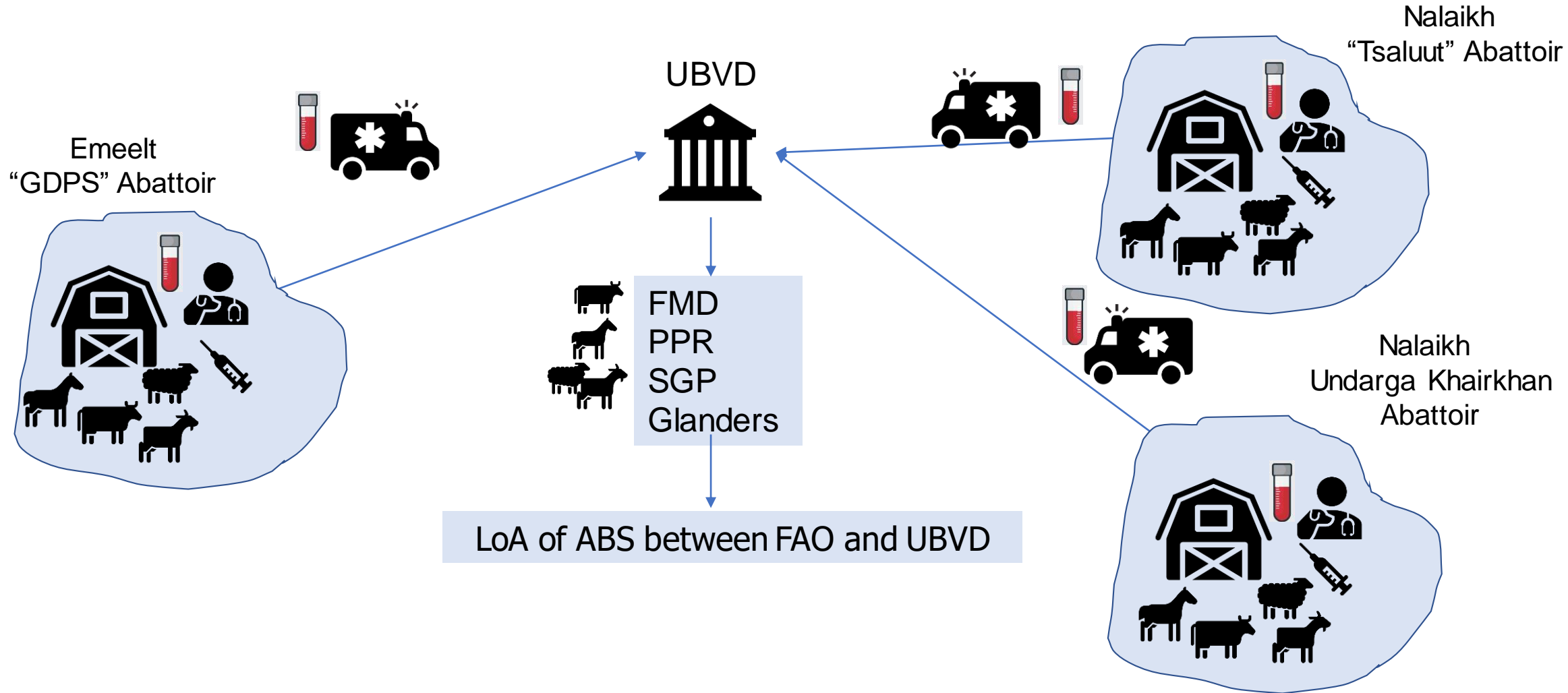
Тогтмол дүн шинжилгээ хийх



Мэргэжилтнүүд хоорондоо
ТОГТМОЛ ЗӨВЛӨЛДӨХ



Abattoir surveillance



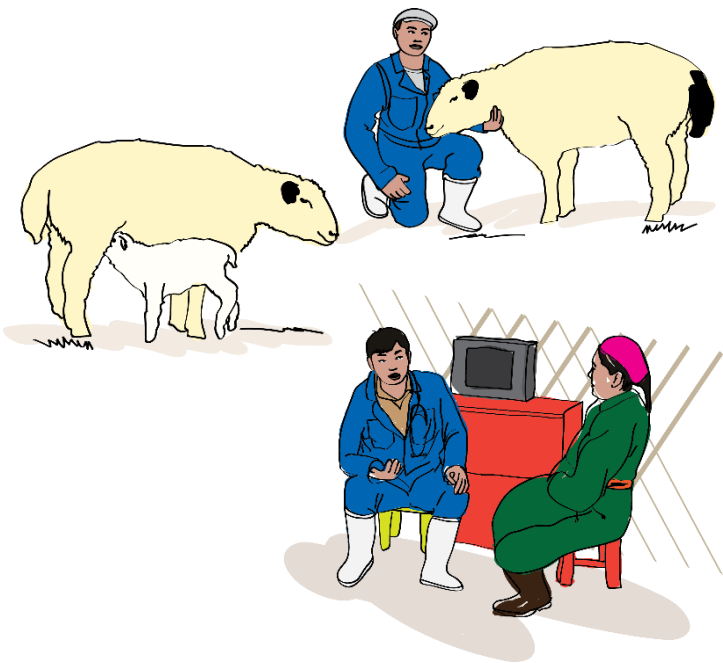


ТЭГ ТАЙЛАН

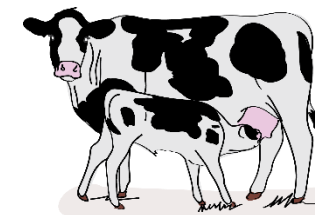


МАЛ ЭМНЭЛГИЙН
НЭГДСЭН СИСТЕМ

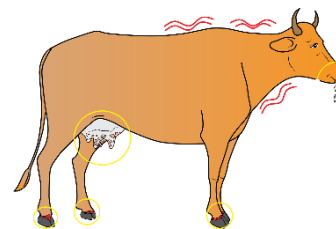
Сум/Аймаг/Төв



Тодорхойлолт



Ямар нэг эмгэг шинж
тэмдэг илрээгүй



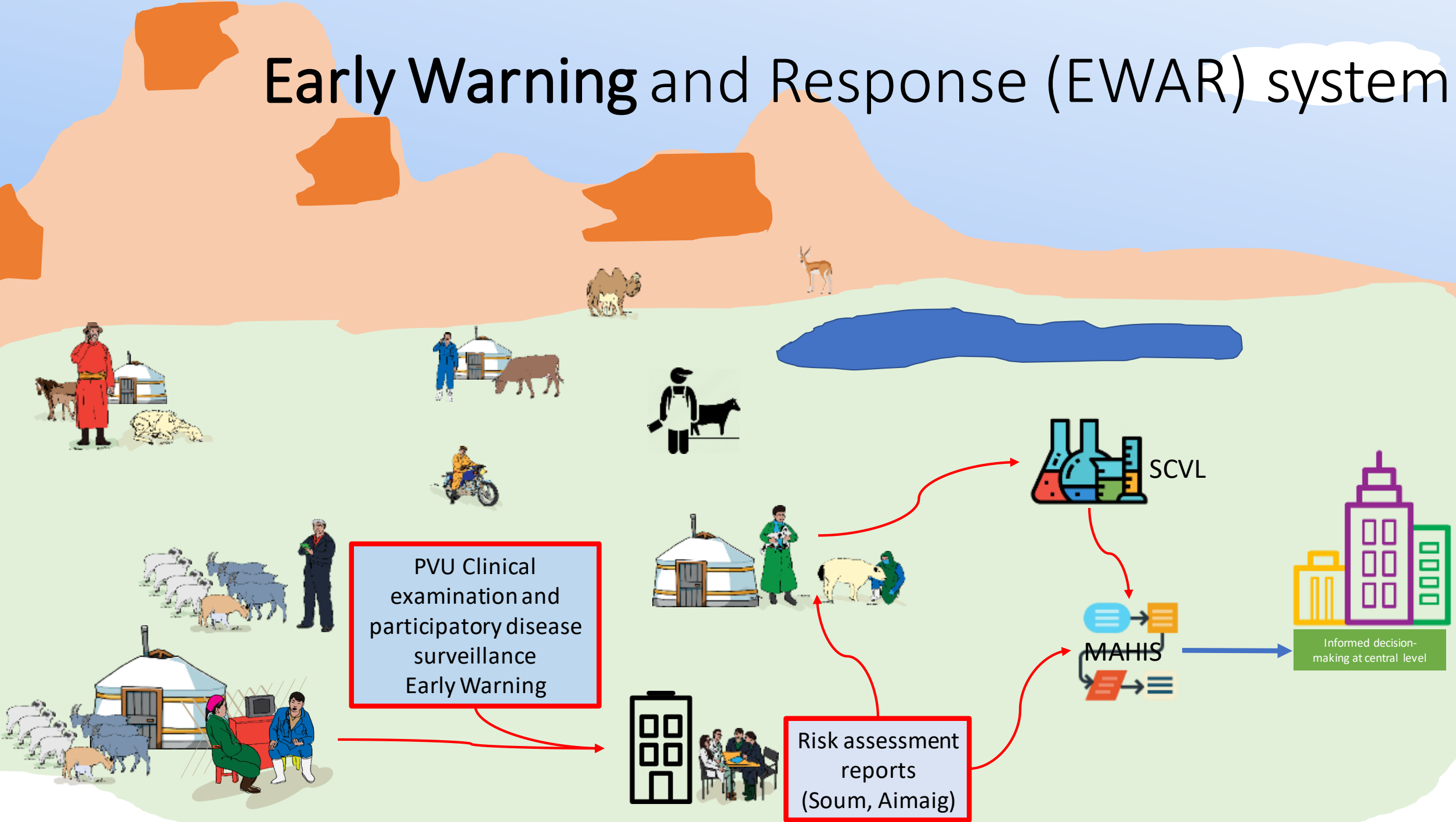
Ямар нэг эмгэг шинж
тэмдэг илрэх

Хариу арга хэмжээ

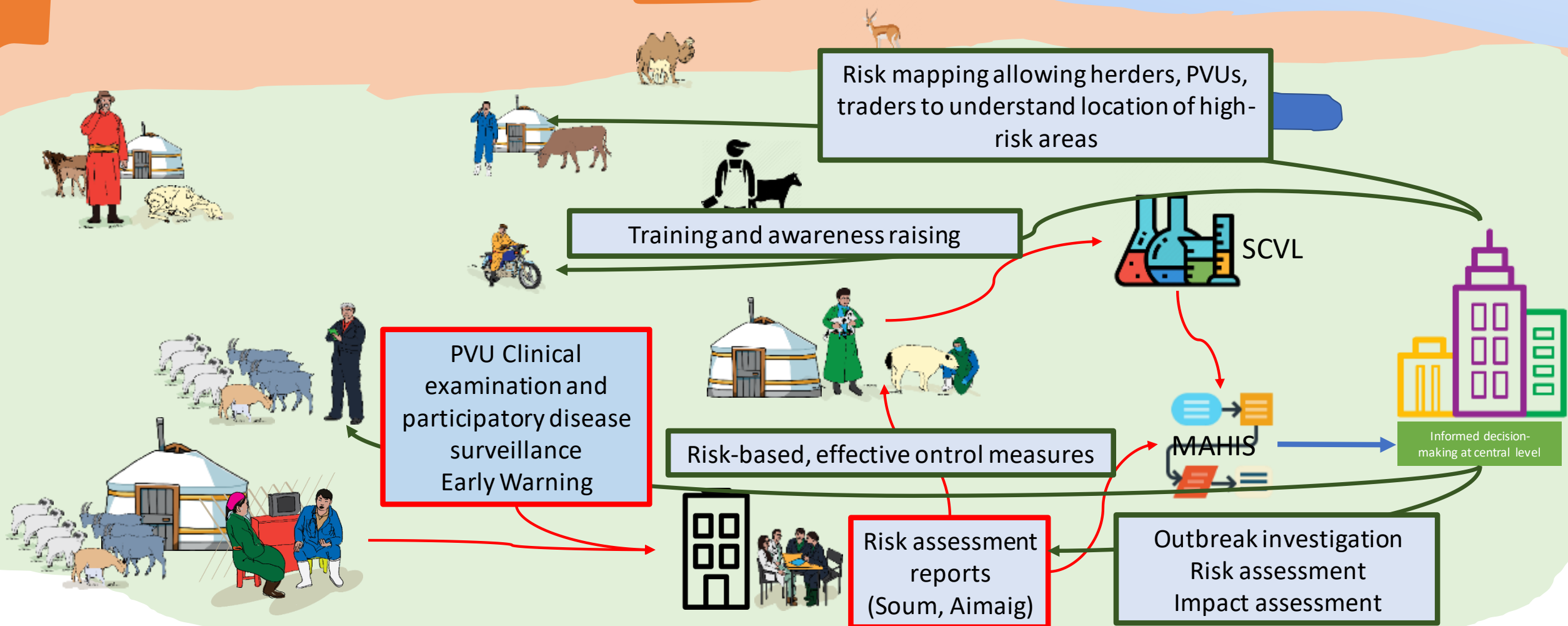
- Ялгаварлан оношлох
- Онош баталгаажуулах
- Нэмэлт судалгаа, шинжилгээ
- ...



Early Warning and Response (EWAR) system



Early Warning and Response (EWAR) system



Integrated surveillance is the means to what end? Healthy livestock provides healthy food

