

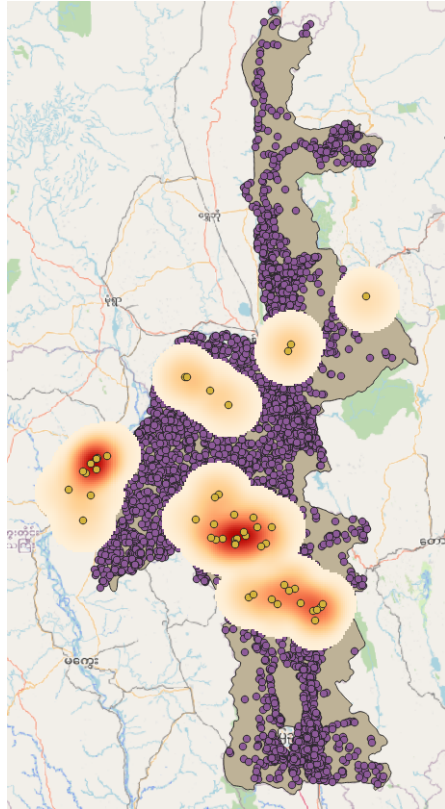


Advanced GIS Virtual Training Course- Summary and next steps

Chris Compton and Art Subharat, EpiCentre, Massey University, New Zealand
August 2021

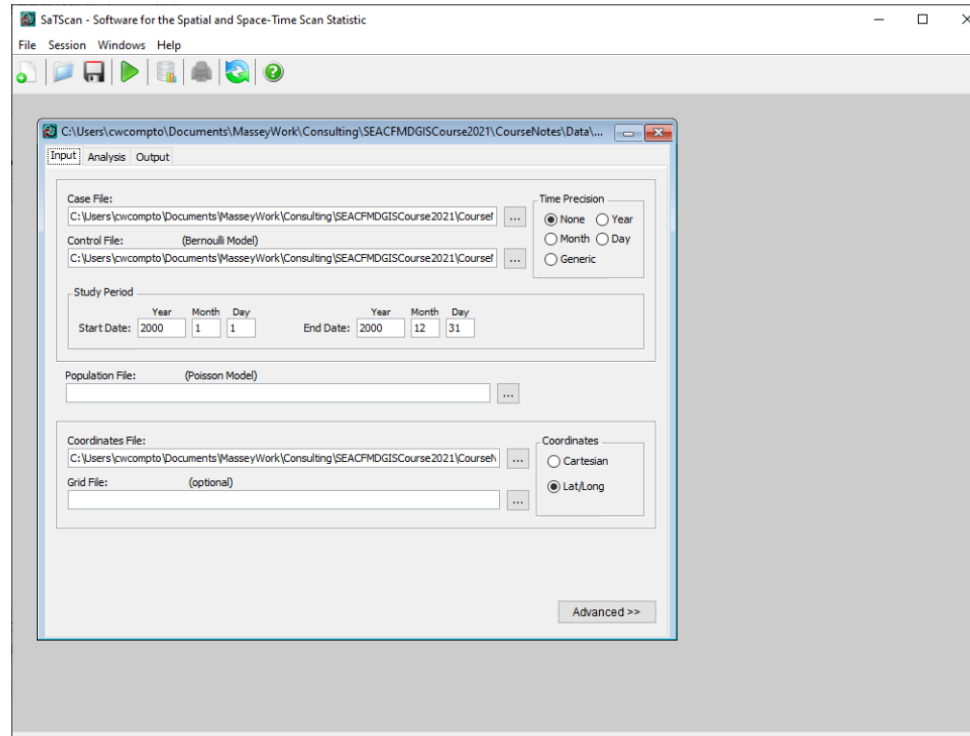
Revision Day 05

Mapping and describing patterns of disease occurrence



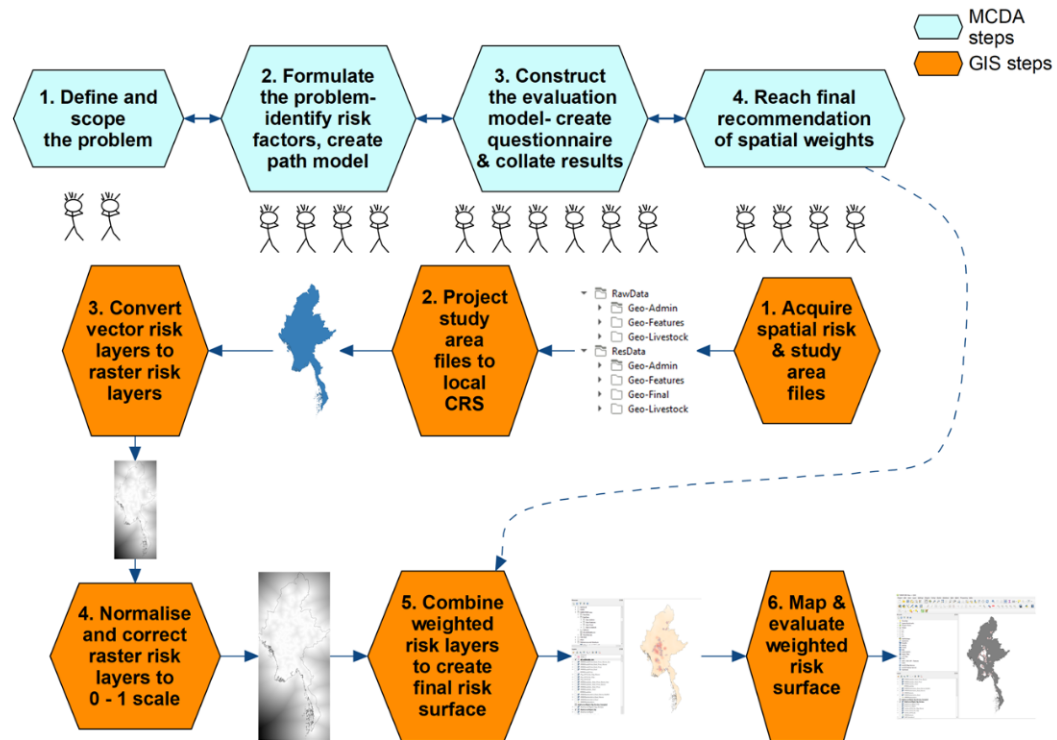
- Key first steps in spatial analysis
- Requirements
 - Spatial data
 - \pm attribute data
- Tools:
 - QGIS
 - QGIS plug-ins (OSM)
 - Google Earth Pro

SaTScan software for statistical analysis of spatial clusters



SaTScan software output summary- clustering of FMD in villages in Mandalay-Nay Phi Taw

Course summary



Critical steps for successful SRA

- MCDA
 - Clear description of problem and question to answer
 - Effective communication and collaboration with stakeholders/experts
- GIS
 - Good organisation of analysis
 - Stepwise evaluation of results
 - Development of self-support resources
 - Colleagues/SEAC-FMD social network group?
 - On-line

QGIS/GIS learning support

- QGIS User Guide
 - <https://docs.qgis.org/3.16/en/docs/>

The screenshot shows the QGIS 3.16 documentation website. The browser address bar displays `docs.qgis.org/3.16/en/docs/`. The page features a sidebar on the left with a search bar and a list of links under the headings "FOR USERS", "FOR WRITERS", and "FOR DEVELOPERS". The main content area is titled "Documentation for QGIS 3.16" and includes a "Hint" section with a link to "testing docs", a "Note" section about language and version availability, and a welcome message. At the bottom, it lists downloadable materials: HTML zipped files and PDF files.

← → ↻ 🏠 docs.qgis.org/3.16/en/docs/

Apps Bookmarks Customize Links Gmail - Inbox Google Calendar Library Log in Library - books, jou... Evernote Calendly

QGIS Documentation
3.16
Search docs
Index

FOR USERS
QGIS Desktop User Guide/Manual (QGIS 3.16)
QGIS Server Guide/Manual (QGIS 3.16)
Training Manual
A Gentle Introduction to GIS

FOR WRITERS
Documentation Guidelines

FOR DEVELOPERS
PyQGIS Cookbook (QGIS 3.16)
Developers Guide

» Documentation for QGIS 3.16 [Edit on GitHub](#)

Next

Documentation for QGIS 3.16

Hint
Looking for documentation of versions newer than the 3.16 Long Term Release? Have a look at the [testing docs](#).

Note
QGIS documentation is available in various languages and versions. Expand the [QGIS Documentation](#) menu at the bottom of the sidebar to see the list.


Welcome to the official documentation of [QGIS](#), the free and open source community-driven GIS software! If you are new to this documentation, the table of contents below and in the sidebar should let you easily access the documentation for your topic of interest. You can also use the search function in the top left corner.

Besides the online documentation, the QGIS project also provides materials that you can download for offline reading. They are accessible from the [QGIS Documentation](#) menu at the bottom of the sidebar, as:

- HTML zipped files that you can extract and [use as paths](#) from within the software
- PDF files

QGIS/GIS learning support

- QGIS Tutorials and Tips
 - <https://www.qgistutorials.com/en/index.html>

 QGIS Tutorials and Tips v1 [Tutorials List](#) [Introduction »](#)

Author
Ujaval Gandhi
[Follow @spatialthoughts](#)

Want to learn QGIS in a structured way?
Check out [Spatial Thoughts Academy](#) for more learning materials and instructor-led online programs with QGIS.org certification.

Subscribe to my newsletter

Email address

[Subscribe](#)

Change Language

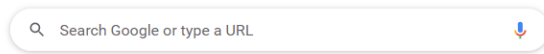
English

QGIS Tutorials and Tips

- **Overview**
 - [Introduction](#)
- **Basic GIS operations**
 - [Making a Map \(QGIS3\)](#)
 - [Working with Attributes \(QGIS3\)](#)
 - [Importing Spreadsheets or CSV files \(QGIS3\)](#)
 - [Basic Vector Styling \(QGIS3\)](#)
 - [Calculating Line Lengths and Statistics \(QGIS3\)](#)
 - [Basic Raster Styling and Analysis \(QGIS3\)](#)
 - [Raster Mosaicing and Clipping \(QGIS3\)](#)
 - [Working with Terrain Data \(QGIS3\)](#)
 - [Working with WMS Data \(QGIS3\)](#)
 - [Working with Projections \(QGIS3\)](#)
 - [Georeferencing Topo Sheets and Scanned Maps \(QGIS3\)](#)
 - [Georeferencing Aerial Imagery \(QGIS3\)](#)
 - [Digitizing Map Data \(QGIS3\)](#)
 - [Searching and Downloading OpenStreetMap Data \(QGIS3\)](#)
- **Intermediate GIS operations**
 - [Performing Table Joins \(QGIS3\)](#)
 - [Performing Spatial Joins \(QGIS3\)](#)
 - [Performing Spatial Queries \(QGIS3\)](#)
 - [Creating Heatmaps \(QGIS3\)](#)
 - [Animating Time Series Data \(QGIS3\)](#)
 - [Handling Invalid Geometries \(QGIS3\)](#)
- **Advanced GIS operations**
 - [Nearest Neighbor Analysis \(QGIS3\)](#)
 - [Sampling Raster Data using Points or Polygons \(QGIS3\)](#)
 - [Interpolating Point Data \(QGIS3\)](#)
 - [Calculating Street Intersection Density \(QGIS3\)](#)
 - [Batch Processing using Processing Framework \(QGIS3\)](#)
 - [Automating Complex Workflows using Processing Modeler \(QGIS3\)](#)
 - [Automating Map Creation with Print Layout Atlas \(QGIS3\)](#)
 - [Multi Criteria Overlay Analysis \(QGIS3\)](#)

QGIS/GIS learning support

- Google Search



Add shortcut

Stay updated on the Olympics with Google

BEST WISHES!