



Animal Feed control in Thailand



Dr. Wanida Chaengprachak, DVM

Division of Animal Feed and Veterinary Products Control (AFVC)

Department of Livestock Development (DLD)



OUTLINE

1

General Information and Organization of AFVC

2

Legislation

3

Registration of Animal Feed

4

Import Control of Animal Feed

5

Export Control of Animal Feed

6

Control of Animal Feed Production

7

Control of Feed at Farm

8

Control of Feed Dealer

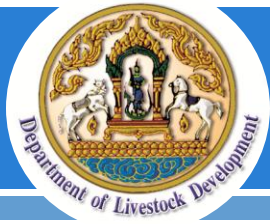
9

Conclusion



General information

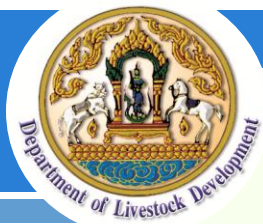




General information



- 513,120 square kilometres
- 68 million people
- Agriculture contributes to 13% of the country's GDP
- Main livestock industries and exporting products – poultry and pigs and their products, pet food and feed



Ministry of Agriculture and Cooperatives

Government

Bureau of Secretary to the Minister
Office of the Permanent Secretary
for Agricultural and Cooperatives
Rice Department
Royal Irrigation Department
Cooperative Auditing Department
Department of Fisheries
Department of Livestock Development
Land Development Department
Department of Agriculture
Department of Agricultural Extension
Cooperative Promotion Department
The Queen Sirikit Department of Sericulture
Agricultural Land Reform Office
National Bureau of Agricultural
Commodity and Food Standards
Office of Agricultural Economics

State Enterprise

Marketing Organization
of Farmers
Fish Marketing Organization
Dairy Farming Promotion
Organization of Thailand
Rubber Estate Organization
Office of the Rubber
Replanting Aid Fund

Public Organization

Agricultural Research
Development Agency
High Land Research
Development Institute
The Golden Jubilee
Agricultural Museum



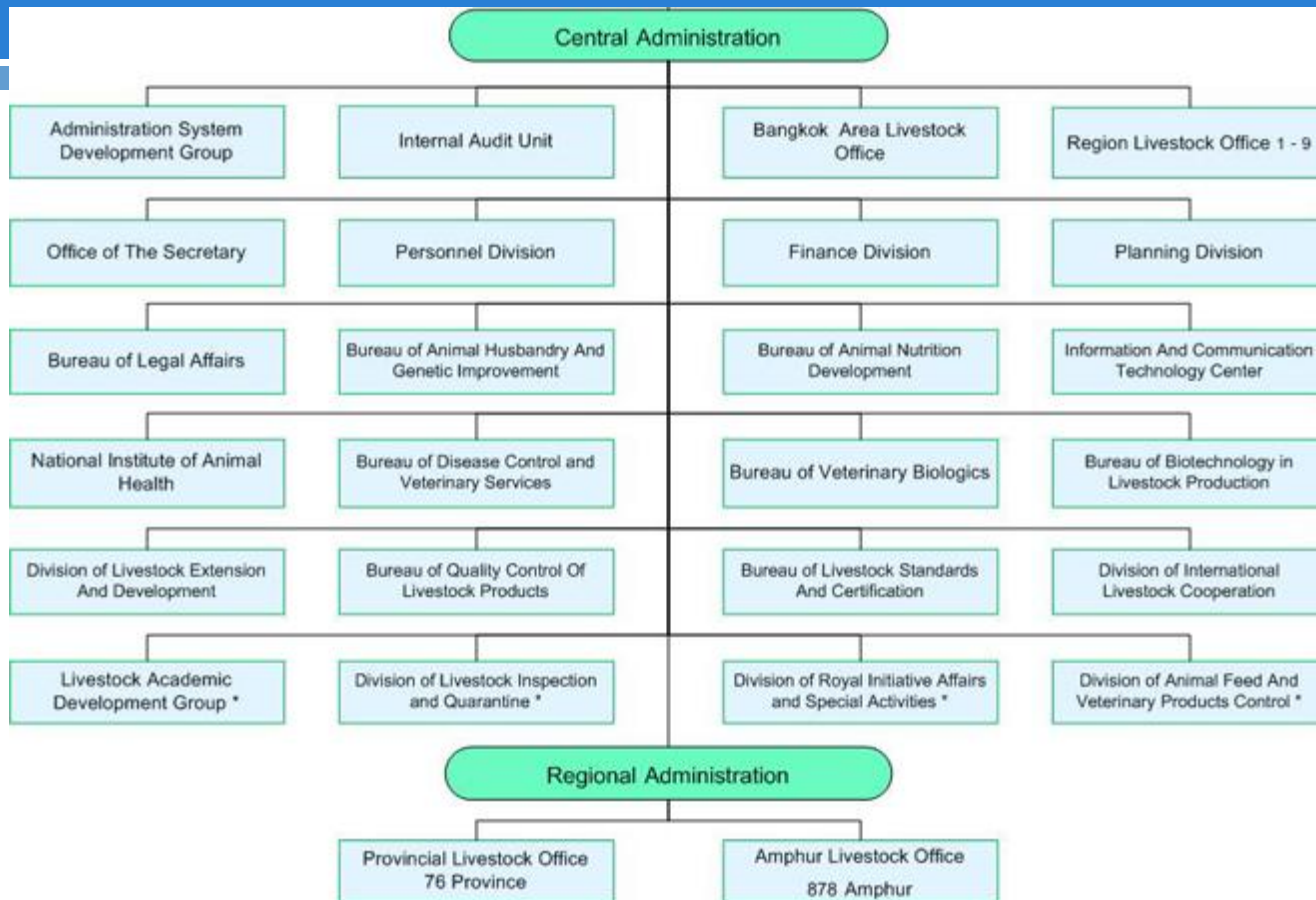
Mission of DLD

- To prevent, control, and eradicate animal diseases;
- To enhance and increase animal products in terms of variety, quantity, and quality to meet the national and international standards;
- To encourage scientific studies and research on animal production, animal health, food safety and animal welfare;
- To enforce and regulate laws and regulating livestock industries and stakeholders according to the laws.



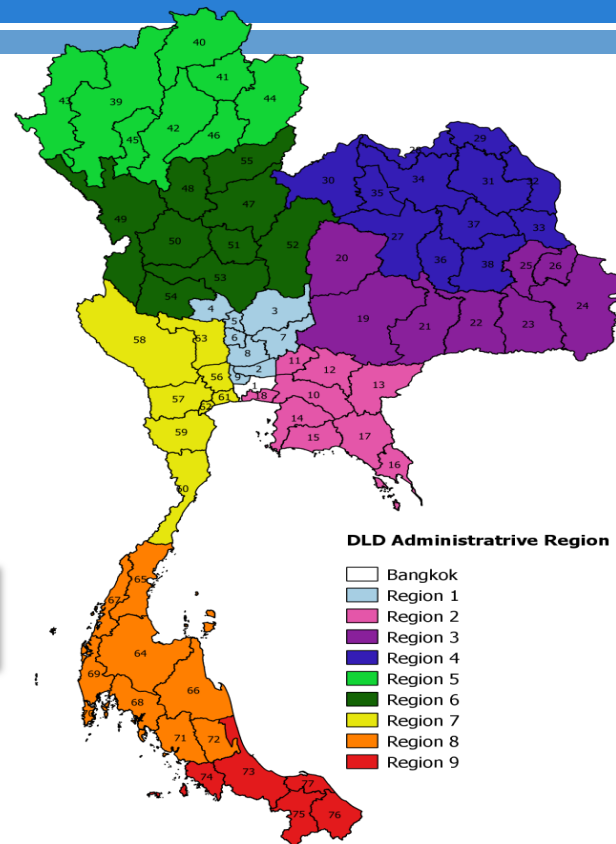
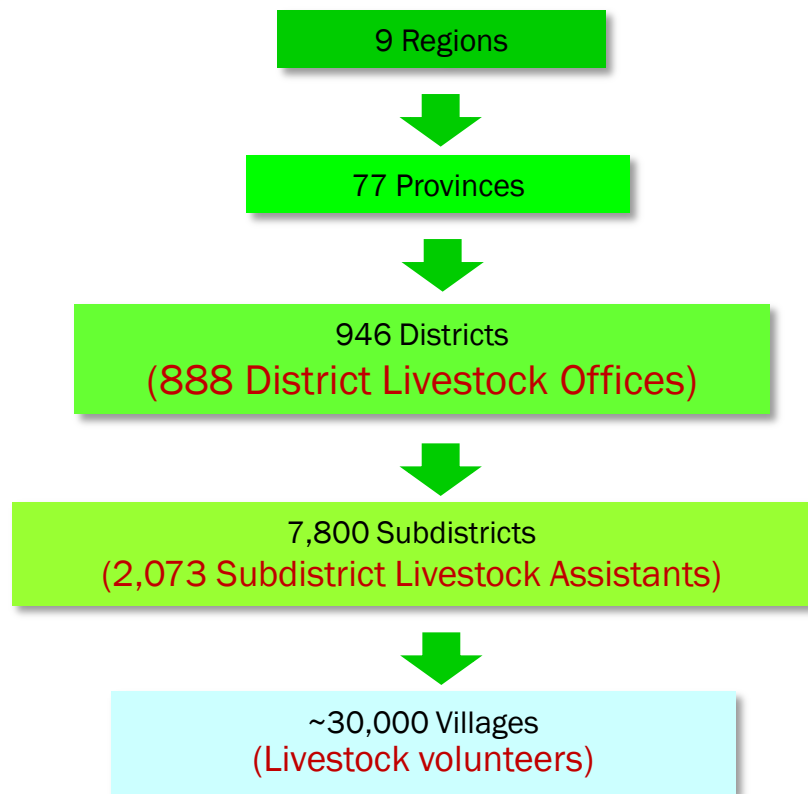


Organization of DLD





Livestock Administrative Regions in Thailand





Organization of AFVC

**Division of Animal
Feed and
Veterinary
Products Control
(AFVC)**



- 1. Animal Feed License and Registration Section**
- 2. Import-Export of Feed Quality Control Section**
- 3. International Cooperation and Trade section**
- 4. License Registration and Hazardous Substances Standard Section**
- 5. Quality Assurance and Certification Section**
- 6. Veterinary Medicine Products and Antimicrobial Resistance Containment Section**
- 7. General Administration Section**
- 8. Feed Standard Section**
- 9. Special Operations of Feed, Medicine and Hazardous Substances Section**
- 10. Inspection of Feed, Medicine and Hazardous substance Section**
- 11. Planning and Information Section**



Legislation

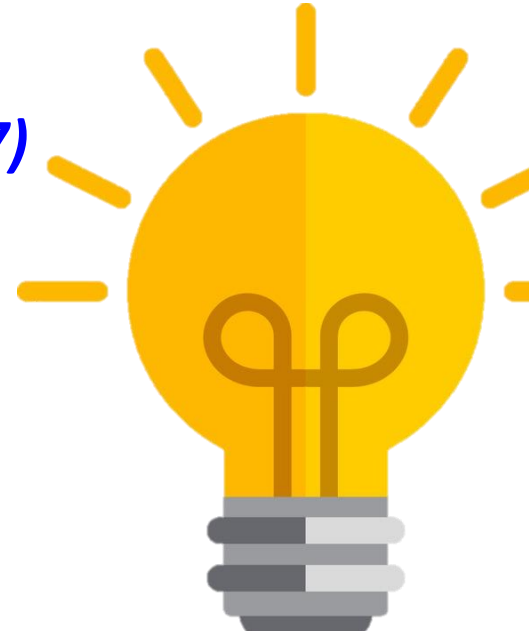
∞ ***Animal Feed Quality Control Act B.E. 2558 (2015)***

∞ ***Hazardous Substances Act. B.E. 2535 (1992)***

e.g. cleaning, disinfectant & pesticide

∞ ***Drug Act B.E. 2510 (1967) (amended B.E. 1987)***

e.g. veterinary drug & vaccine





Legislation

Animal Feed Quality Control Act B.E. 2558 (2015)

License

- FBO : produce, import, sell
- Duties of licensees

Quality control

- Registration
- Standards, regulations

Certificates

- GMP, HACCP
- Guarantee practices in feed system

Official control

- Verify compliance with regulation
- Ensure feed safety
- Prevent risks to animals and humans



Registration of Animal Feed





Registration of Animal Feed

Especially controlled animal feed

- ☞ 1. Raw materials
- ☞ 2. Milk product for animal
- ☞ 3. Compound feed
- ☞ 4. Supplement for animal
- ☞ 5. Pet Food

Registration

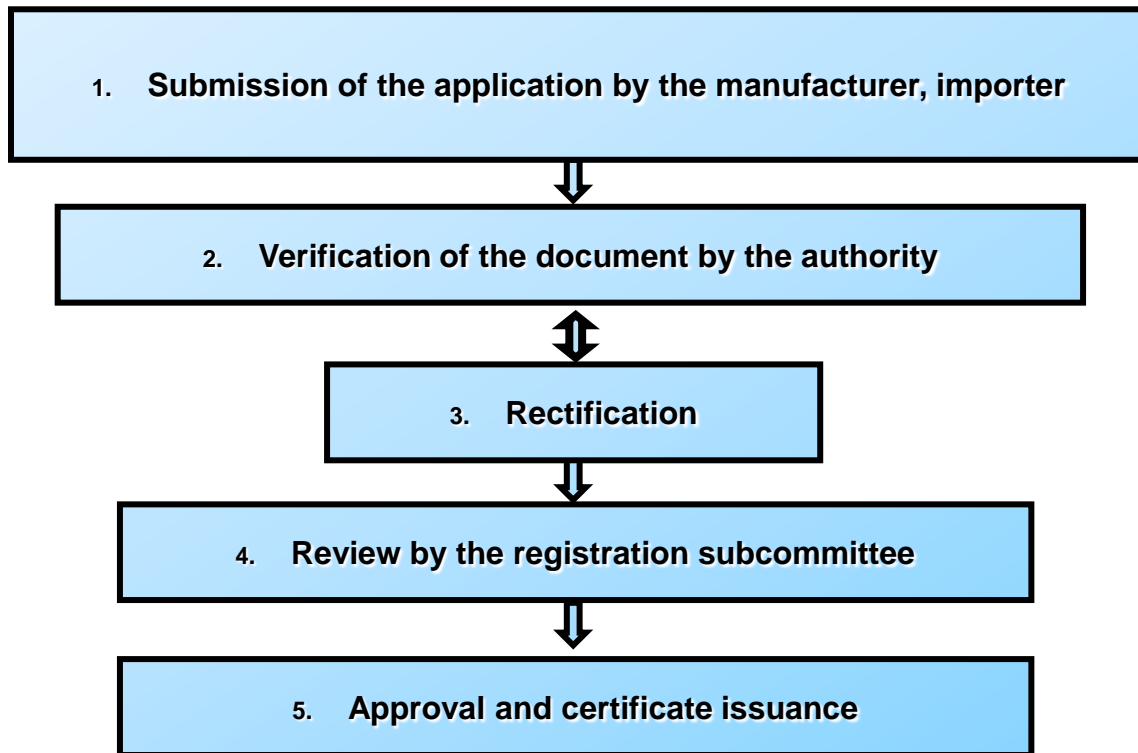
Comply with

Notification of Ministry of Agriculture and Cooperatives on the Prescribing of Quality or Standard of Especially Controlled Animal Feed

<http://afvc.dld.go.th/>



Registration of Animal Feed



Type of animal feed

Complete feed & Concentrated feed

Premix

Feed supplement

Complete pet food

Complementary pet food

Therapeutic pet food

Supplement for Pet

Raw material

Milk product for animal



Import Control of Animal Feed





Notification of the Ministry of Agriculture and Cooperatives

01

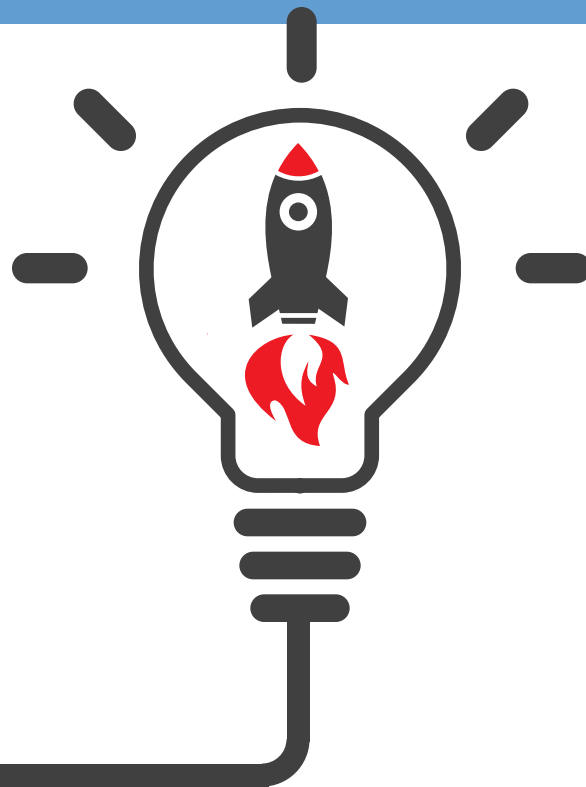
The Prescribing of **Criteria, Procedures, and Conditions** on Import for Sale of Especially Controlled Animal Feed Ingredients B.E. 2560 (A.D. 2017)

02

The Prescribing of Characteristics and Conditions for Prohibited Importation of Animal Feed with Risk from Avian Influenza (AI) B.E. 2560 (A.D. 2017)

03

The Prescribing of Characteristics and Conditions for Prohibited Importation of Animal Feed with Risk from BSE B.E. 2560 (A.D. 2017)



The Prescribing of Criteria, Procedures, and Conditions on Import for sale Especially Controlled Animal Feed B.E. 2560 (A.D. 2017)



The licensee who is granted license to import especially controlled animal feed who desires to import the especially controlled animal feed shall arrange an **inspection and certification of the product facility in the country of the producer** of such especially controlled animal feed by DLD officials. The especially controlled animal feed which requires the inspection and certification shall be as defined and notified by the Director-General

Certification of the production facility of especially controlled animal feed shall remain **valid for 5 years** starting from the date the DLD issues a notice of certification result

The Prescribing of Characteristics and Conditions for Prohibited Importation of Animal Feed with Risk from Avian Influenza (AI) B.E. 2560 (A.D. 2017)



Importation of **poultry meal, poultry by-products meal and feather meal** as raw materials for animal feed or of animal feed containing poultry meal, poultry by-product meal and feather meal ingredients from a country with suspected outbreak of highly pathogenic avian influenza (HPAI) or an outbreak reported by the World Organization for Animal Health (OIE) **within 12 months** of the last HP AI outbreak is prohibited, except when the following conditions are complied with:

Poultry meal, poultry by-product meals and feather meal as raw materials for animal feed production that **have been processed** either:

- (a) with moist heat process at a temperature no less than 118 °c that continues for at least 40 minutes; or
- (b) with continuous hydrolyzing process under the steam pressure no less than 3.79 bars at a temperature no less than 122 °c that continues for at least 15 minutes; or
- (c) with alternative rendering process that can be proved to heat the whole product at a temperature no less than 74 °c

Product going through the process under (a), (b) or (c) must have proven measures or evidences that they did not have the opportunity to come into contact with or did not come from Avian influenza outbreak sources.

The Prescribing of Characteristics and Conditions for Prohibited Importation of Animal Feed with Risk from BSE B.E. 2560 (A.D. 2017)



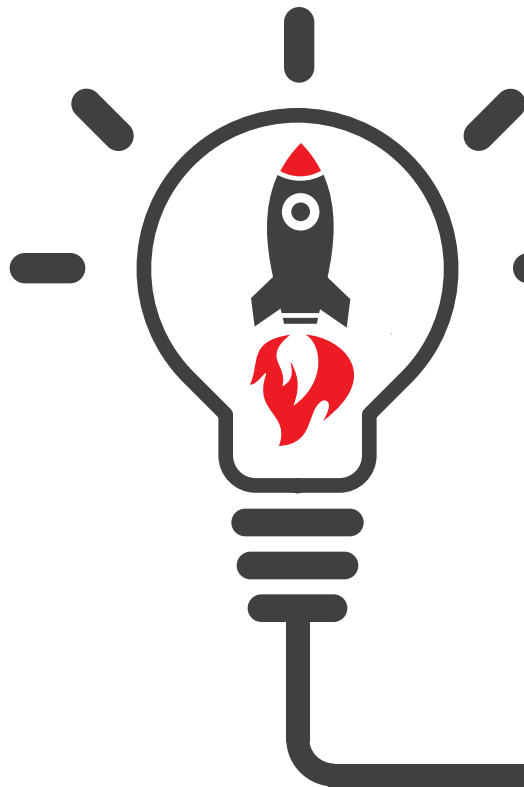
“The country recognized as having a Bovine Spongiform Encephalopathy (BSE) risk” means a country or an area with BSE risk status that appear in the notification of the World Organization for Animal Health (OIE) which are divided into Group 1, Group 2 and Group 3 countries.

- “Group 1 Countries” means the group of countries posing **negligible** BSE risk,
- “Group 2 Countries” means the group of countries posing **controlled** BSE risk,
- “Group 3 Countries” means the group of countries posing **undetermined** BSE risk

Importation of Animal feed derived from cattle or containing ingredients from cattle or products derived cattle must comply with the rules and conditions notified by the DG of the DLD



Notification of Department of Livestock Development



01

The Prescribing of the Especially Controlled Animal Feed Requiring Production Facility Audit and Approval
B.E. 2560 (A.D. 2017)

02

The Prescribing of Rules and Conditions for the Importation of Animal Feed from Poultry or Containing Poultry Ingredients or Poultry Products with Risk from Avian Influenza
B.E. 2560 (A.D. 2017)

03

The Prescribing of Rules and Conditions for the Importation of Animal Feed from Ruminant or Containing Ruminant Ingredients or Ruminant Products with Risk from BSE
B.E. 2561 (A.D. 2018)

The Prescribing of the Especially Controlled Animal Feed Requiring Production Facility Audit and Approval B.E. 2560 (A.D. 2017)



The following especially controlled animal feeds are require to have a production facility audit and approval prior to importation:

1) Types of raw material

- Meat meal
- Degreasing meat meal
- Meat and bone meal (MBM) (45% Protein)
- Meat and bone meal (MBM) (50% Protein)
- Poultry meal
- Poultry by-products meal
- Feather meal

2) Animal supplements: mineral supplements derived from animal bones.

The Prescribing of Rules and Conditions for the Importation of Animal Feed from Poultry or Containing Poultry Ingredients or Poultry Product with Risk from Avian Influenza B.E. 2560 (A.D. 2017)



The following animal feeds derived from poultry are determined to have risk from avian influenza:

- | | |
|-----------------------------|--|
| 1) Poultry meal | 5) Plasma powder |
| 2) Poultry by-products meal | 6) Egg powder |
| 3) Feather meal | 7) Poultry fats/oils |
| 4) Blood meal | 8) Palatability enhancers/ Flavoring agent innards |

Animal feeds listed above shall be subjected to inspection and certification of production facility by the DLD, and such production facility approval shall be valid for a period of 5 years, from the date that the DLD issues the approval result

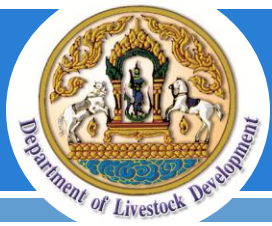


The Prescribing of Rules and Conditions for the Importation of Animal Feed from Ruminant or Containing Ruminant Ingredients or Ruminant Product with Risk from BSE B.E. 2560 (A.D. 2017)

The following animal feeds derived from bovine are determined to have risk from BSE

- | | |
|-----------------------------|---|
| 1) Meat Meal | 8) Gelatine and Collagen from Bones |
| 2) Degreasing Meat Meal | 9) Dicalcium Phosphate |
| 3) Meat and Bone Meal (MBM) | 10) Blood Meal |
| 4) Bone Meal | 11) Blood By-Products Meal |
| 5) Greaves | 12) Plasma Powder |
| 6) Tallow | 13) Products containing ingredients from bovine as listed |
| 7) Tallow derivatives | in 1)-4) except those in the group of Negligible Risk and |
| | there has been no case of BSE. |

Animal feeds listed above shall be subjected to inspection and certification of production facility by the DLD, and such production facility approval shall be valid for a period of 5 years, from the date that the DLD issues the approval result.



Import Control of Animal Feed



On – site inspection audit at exporting country for controlling of feed production at the country of origin.



Import Control of Animal Feed



On – site inspection audit at exporting country for controlling of feed production at the country of origin.



Control of Feed Production at the Country of Origin



Fact finding mission for gathering data to evaluate for system audit

Entrepreneur

Submission of application
(Norsor. 4 form) with related
document to DLD officer



AFVC authority

Verify application/ evidence

Amend



Fail

Entrepreneur

✓ adjusts an application

✓ adds an evidences

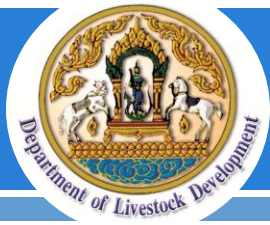
AFVC authority

Issuance of a notification
(Norsor. 4 form) to import
the animal feed

Authorized signatory

Inform the entrepreneur to receive
an approved document to import
the animal feed





Import Control of Animal Feed

Animal feed checkpoint for quarantine system

1. Document Checking

- Certificate of Health
- Certificate of Origin

2. Quality Control Checking

- Salmonella
- Melamine and analog
- DNA Ruminants
- Aflatoxin
- Mycotoxin
- Dioxin
- Proximate Analysis
(Protein, Fat, Crude Fiber, Moisture)

3. Physical Checking

- hermetic container seal Checking
- Physical appearance



Animal feed inspection
at port of entry

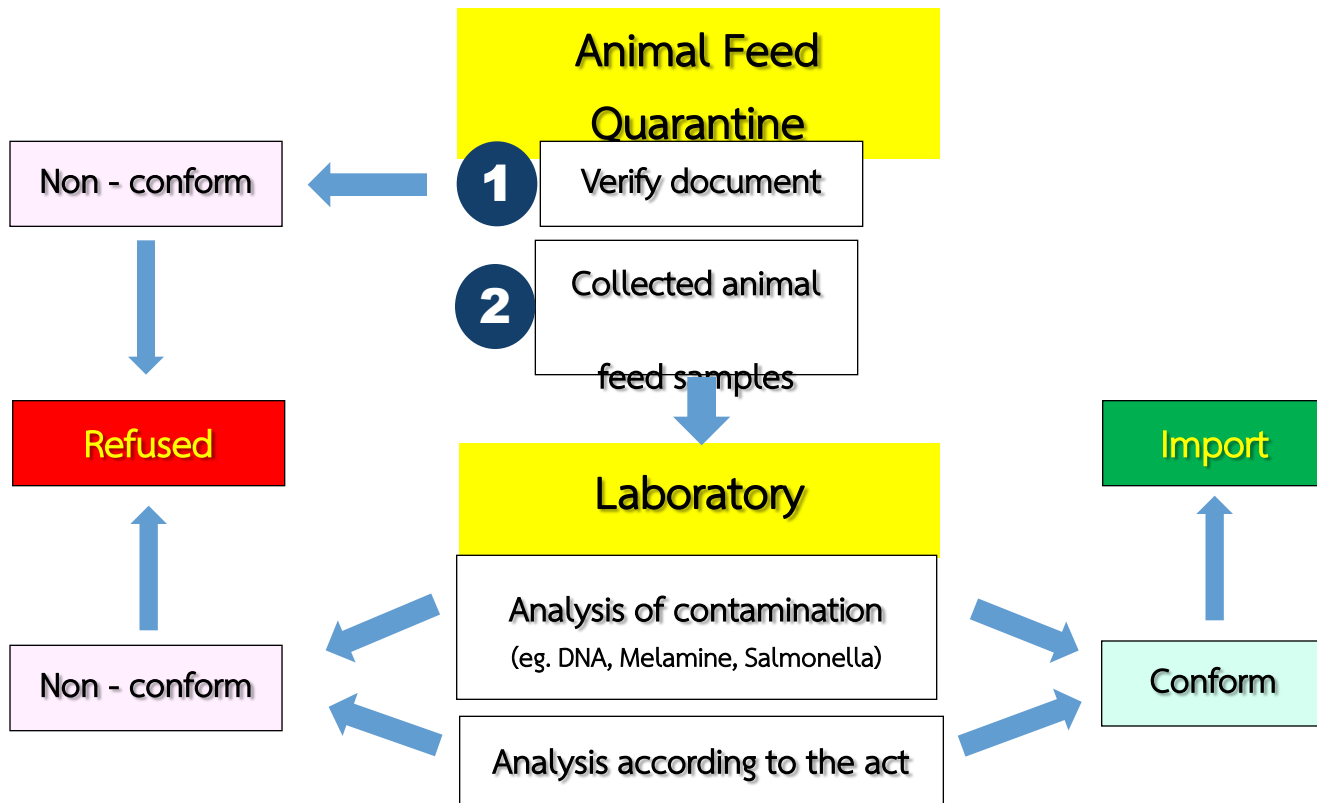


License to Import Animal feed



Import Control of Animal Feed

Animal feed checkpoint for quarantine system





Export Control of Animal Feed





Export Control of Animal Feed

☞ Quality Control Checking

- Salmonella
- Enterobacteriaceae
- Dioxin
- Heavy metal

★ Follow other the requirements of target country including international trade standard and Animal Feed Control Act 2015.

Conform



DLD authority

Certificate of Health

Accompany with animal feed
exported from Thailand





Control of Animal feed Production





Control of Animal Feed Production

* Animal feed manufacturing plant

- ✓ Audited to ensure quality assurance in accordance with animal feed quality control Act related to animal feed products
 - GMP
 - HACCP
- ✓ New audit/ Monitoring audit/ Renewal audit

Type of License/ Certification

License for manufacturing animal feed

GMP certification

HACCP certification





GMP/ HACCP Certification of Animal Feed Manufacturing Plant





GMP/ HACCP Training Program

➤ Program for DLD authorities

- ✓ GMP (Codex) / HACCP Introduction & International Auditor Course
- ✓ Auditor / Lead Auditor (ISO 9001:2015) Training Course





GMP/ HACCP Training Program



Program for enterprises



HACCP Basics for manufacturer





Prohibited Material in Animal Feed Mixture

- β -agonist
- Nitroimidazoles
- Avoparcin
- Olaquinox
- Diethylstilbestrol (DES)
- Nitrofurans
- Chloramphenicol
- Carbadox
- Melamine and analog
- Antimicrobial For Growth Promotor



Control of Feed at Farm





Quality & Standard Control of Animal Feed

☞ Quality Control Checking

- Salmonella
- Mycotoxin
- Dioxin
- Proximate Analysis
(Protein, Fat, Crude Fiber, Moisture)



Control of feeding on farm



Control of Feed Dealer





Control of Feed Dealer



License to sell Animal feed



Inspection at the shop for checking animal feed

Conclusion

- Ensure high standards and quality of animal feed safety controls
- Meet the international standards and trading partners' requirements
- Care for healthy animals, consumer safety, environment and animal welfare (**“Green Livestock Production”**)
- Enhance the regional coordination with neighboring countries and international organizations
- Facilitate trade and transparency

“Bring better communication, coordination and collaboration between public health and animal health sectors”



More information

www.afvc.dld.go.th

← → ↺ | ไม่ปลอดภัย | afvc.dld.go.th/webnew/index.php/th/ | 🔍 ☆

🇹🇹 🇬🇧 🇺🇸 Resume & Work 🇯🇵 Official organization 🇯🇵 Reg 🇯🇵 OIE World Animal H 🇯🇵 Animal Feed Control 🇯🇵 https://accounts.mail Professional Resume 9 Best Resume For

โครงการพัฒนาระบบนิเวศของอุตสาหกรรม NATION SING WINDOW (NSW)

นามสลิทแพนทริกไทย งามกัณ
ผู้อำนวยการกองควบคุมอาหารและยาสัตว์

🏭 โรงงานผลิตอาหารสัตว์
ที่ได้รับการรับรอง
GMP/HACCP

🏠 ฟาร์มเลี้ยงสัตว์
ปลอดสารเร่งเนื้อแดง

🏠 ฟาร์มปลอดการใช้ยา
RWA

🏠 ฟาร์มลดการใช้ยา
RAU

🏠 แหล่งผลิตอาหารสัตว์
(ต่างประเทศ)

🏠 ผลิตภัณฑ์กักตุนถาวร
ที่ได้รับการขึ้นทะเบียน
จากกรมปศุสัตว์

🏠 สารเคมีที่ใช้ในขบวนการ
ใช้ใช้ใบรับรองสัตว์/
โรงงานแปรรูป

📖 กฎหมาย
LAWS

📄 สดัดน้ำเข้า-ส่งออก
อาหารสัตว์และยาในสัตว์

📄 การบังคับใช้กฎหมาย
สำนักงานปศุสัตว์จังหวัด

📄 เอกสาร/แบบฟอร์ม
Download

📄 ระบบบริการอิเล็กทรอนิกส์
NSW

📄 สารสนเทศเครือข่าย
DLD AMR

📄 วิดีโอประชาสัมพันธ์

📄 ข่าวสารประชาสัมพันธ์

📄 ข่าวสารล่าสุด

📄 คู่มือ

📄 จัดซื้อจัดจ้าง

📄 รับสมัครงาน

📄 สอบถามข้อมูล

📄 เอกสารอบรม / เหมพิมพ์

📄 ประชาสัมพันธ์

6 ยุทธศาสตร์
ปรับเชิดชัย

- รับสมัครบุคคลเพื่อคัดเลือกเป็นพนักงานจ้างเหมาบุคคลธรรมดา (งานด้านสารสนเทศ)
- เชิญผู้ประกอบการท้องถิ่นเข้าร่วมโครงการส่งเสริมการค้าขายสินค้าเกษตรและปศุสัตว์
- เชิญผู้ประกอบการท้องถิ่นเข้าร่วมโครงการส่งเสริมการค้าขายสินค้าเกษตรและปศุสัตว์
- การฟื้นฟูความเสียหายจากภัยพิบัติ (ฉบับที่ ...) พ.ศ. (ปีงบประมาณ 2561)
- กฎหมาย การประชุมเชิงพหุ. คณะกรรมการอาหารสัตว์ พ.ศ. 2558 และเงื่อนไขการนำเข้าและส่งออกอาหารสัตว์

Laws



<http://afvc.dld.go.th/webnew/index.php/th/lawdld-menu/2018-10-31-08-11-45>



**THANK YOU
FOR YOUR ATTENTION**