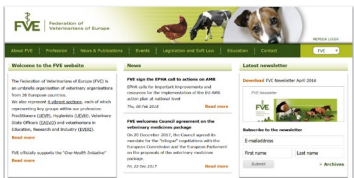


Accreditation of the Faculty of Veterinary Science, Chulalongkorn University according to

The European Association of Establishments for Veterinary Education (EAEVE)

/ The European System of Evaluation of Veterinary Training (ESEVT)



EAEVE Homepage

| |
|------------------------|
| Mission and Objectives |
| Statutes |
| Members |
| ExCom |
| Quality Assurance |
| Contact |



The Association: Foundation, Mission and Objectives:

The European Association of Establishments for Veterinary Education (EAEVE) was founded in 1988 and initially based in Maisons-Alfort, France. Later, the administrative office was based in Brussels, Belgium and since 2007, the seat of EAEVE and its offices have been in Vienna, Austria.

Mission Statement:

The vision for EAEVE is to be the official accreditation authority for veterinary education establishments within Europe

The mission of the EAEVE is to evaluate, promote and further develop the quality and standard of veterinary medical establishments and their teaching within, but not limited to, the member states of the European Union (EU).

News

Announcements

WikiVet LIVE! 2018 Conference in March
www.wikivetlive.com
[open Flyer](#) [open Poster](#)

Projects

Internal Quality Management in Competence-Based Higher Education (IQM-HE)
EAEVE participates in the project IQM-HE, funded by the Erasmus+ Programme of the EU



[About EAEVE](#) [ESEVT](#) [Publications](#) [Important Links](#) [ECCVT](#) [Documents for download](#)



Standard Operating Procedure (SOP)

as approved at the Zagreb General Assembly, 30 May 2019

[open document](#)

News

Job offer

Job opportunity at EAEVE

EAEVE is looking for a Secretary
open advertisement

Application by 5 August 2019



European System of Evaluation of Veterinary Training (ESEVT)

Manual of Standard Operating Procedure

2019

EUROPEAN ASSOCIATION OF ESTABLISHMENTS
FOR VETERINARY EDUCATION
(EAEVE)

FEDERATION OF VETERINARIANS
OF EUROPE
(FVE)

| | |
|-------------------------------------------------------------------------------|----|
| Chapter 3. ESEVT Standards for Accreditation | 18 |
| Standard 1: Objectives, Organisation and Quality Assurance Policy | 18 |
| Standard 2: Finances | 19 |
| Standard 3: Curriculum | 19 |
| Standard 4: Facilities and equipment | 21 |
| Standard 5: Animal resources and teaching material of animal origin | 22 |
| Standard 6: Learning resources | 23 |
| Standard 7: Student admission, progression and welfare | 23 |
| Standard 8: Student assessment | 24 |
| Standard 9: Academic and support staff | 25 |
| Standard 10: Research programmes, continuing and postgraduate education | 26 |

2019 SOP (Zagreb SOP)

SER (self-evaluation report)

- Separated “standard” team
(+ representative from Liaison team/SER editorial team)
- 10 SER standard teams
 - Chair(s)
 - WG(s)
 - Secretary
 - representative from Liaison team/SER editorial team

Annex 6. Template and guidelines for the writing of the SER

(as approved by the EAEVE Executive Committee on 29 May 2019)

Forewords (to be read before the writing of the SER)

The SER is the cornerstone of the evaluation process. It must be the result of an in-depth review of the Establishment and the education and training it provides to prepare its students to qualify to join the veterinary profession.

It is strongly recommended that the preparation of the SER begins about one year before the Visitation at the latest, involves key members of staff in its preparation and is approved by the Establishment's governing body. Not less than 2 months before the Visitation, the SER (and the appendices) must be sent by the Establishment to all members of the Visitation Team and to the EAEVE Office, both by surface-mail (hard copy) and by e-mail (electronic version in PDF and Word format).

The SER must be concise (maximum 100 pages, without the appendices, written in Times New Roman font, size 12, single spacing), complete, accurate and written in English in agreement with the ESEVT template. An inadequate SER may be considered by ECOVE as a Major Deficiency, e.g. lack of compliance with Standard 1.5.

All Standards must be addressed with Factual Information, Comments (e.g. subjective information, current limiting factors of improvement) and Suggestions for Improvement (e.g. list of desired/planned/ongoing changes in descending order of importance). All the questions in the template must be answered. If there is no activity in the Establishment which corresponds to the question, 'not applicable' must be stated. The term 'student' used alone means undergraduate student.

The texts in italic in this template must be deleted in the final copy of the SER.

Long lists of explanatory material and extracts of official texts must be excluded from the core SER and provided as appendices (with cross-reference in the core SER) or provided during the Visitation in the Team room.

The SER and the Visitation Report, which are considered confidential until the final decision of ECOVE, are eventually published on the Establishment's and EAEVE's websites.



EAEVE
SELF-EVALUATION REPORT

FACULTY OF VETERINARY SCIENCE
CHULALONGKORN UNIVERSITY
2019

FVS CU SER 2019

Financial process of the Establishment
Sources of income from the public and private sectors. The public revenue derives annually sets the total budget allocation for CU. CU then distributes the allocation to its Essential factors that impact budget allocation in each section of CU are 1) the undergraduate and graduate levels) in each faculty, 2) the previous financial plan. The budget from the Thai government is used to cover stipends for obtained mainly from 1) FVS CU teaching hospitals (SAH and FAH) and other continuing education training, workshops, meetings/conferences, pathology unit research grants, etc.) and 2) student registration fees. Other sources of financing item from continuous fundraising through Faculty activities and charities. Annual fees during the last three academic years are shown in Tables 2.1, 2.2, and 2.3.

Establishment regarding the financial process
However, the FVS CU depends partially on funding from the Thai government.

(The last 3 academic years (in Thai currency, Baht))

| 2018* | 2017 | 2016 | Mean |
|--------------|----------------|----------------|----------------|
| 6,813,152.00 | 81,858,193.54 | 78,328,987.23 | 85,666,777.59 |
| 4,397,671.24 | 143,570,938.66 | 150,428,394.68 | 149,465,668.19 |
| 4,278,816.78 | 5,179,360.43 | 3,371,385.62 | 4,276,520.94 |
| 8,922,658.11 | 5,768,093.70 | 69,144,622.41 | 37,945,124.74 |
| 8,412,286.13 | 236,378,588.33 | 301,273,369.94 | 217,509,765.90 |

(The last 3 academic years (in Thai currency, Baht))

| | 2018* | 2017 | 2016 | Mean |
|----------------------------------|----------------|----------------|----------------|----------------|
| Public authorities | 186,149,736.34 | 74,123,709.37 | 89,418,518.91 | 116,563,988.21 |
| Tuition fee (standard students) | 23,254,542.51 | 33,995,790.38 | 33,286,452.00 | 30,178,928.30 |
| Tuition fee (full free students) | N/A | N/A | N/A | N/A |
| Clinical services | 173,272,292.38 | 152,760,397.14 | 152,447,339.76 | 159,493,343.09 |
| Diagnostic services | 4,378,997.00 | 3,605,311.00 | 1,604,400.00 | 3,196,236.00 |
| Other services | 4,115,574.61 | 3,184,526.00 | 4,124,325.57 | 3,808,142.06 |
| Research grants | 8,925,444.72 | 1,683,510.71 | 12,077,133.54 | 7,562,028.66 |
| Continuing education | 5,498,789.21 | 4,701,154.58 | 4,185,086.01 | 4,795,009.27 |
| Donations | 3,494,267.23 | 3,543,541.29 | 2,395,606.60 | 3,144,468.37 |
| Other sources | 45,631,591.63 | 17,900,539.26 | 13,838,448.43 | 25,790,193.07 |
| Total revenues | 454,721,265.53 | 295,498,479.73 | 313,377,310.82 | 354,532,332.03 |

Note: *The last full academic year before the Visitation

The Visitation must be carried out during a period of full academic activity, i.e. when most staff and students are present on site.

The deposit and fees for the evaluation process are provided in Annex 5.

1.2. Identification of the Visitation Team

Not less than 6 months before the Visitation, the European Committee of Veterinary Education (ECOVE), through the EAEVE Office, appoints the members of the Visitation Team and sends to the Establishment the Visitation team list and the contact details of each Visitor.

The Visitation Team is composed of 8 Visitors:

-) 1 expert in Basic Sciences (BS);
-) 1 expert in Clinical Sciences in companion animals (including equine and exotic pets) (CS-CA);
-) 1 expert in Clinical Sciences in food-producing animals (including Animal Production and Herd Health Management) (CS-FPA);
-) 1 practitioner (proposed by FVE) (P);
-) 1 expert in Food Safety and Quality (including Veterinary Public Health) (FSQ);
-) 1 expert in Quality Assurance (QA);
-) 1 student (a minimum of 2 years before graduation as veterinarian or a maximum of 1 year after graduation at the time of the Visitation) proposed by an association of veterinary students and being from an Establishment which is full member of EAEVE with the Accreditation status (or Approval status during the transition period) (ST);
-) 1 ESEVT Coordinator (CO).

2019 SOP (Zagreb SOP)

Full Visitation (FV) (8 visitors)

- Teams/WGs as tracks/fields to be visited and evaluated
- Basic sciences
 - Pre-clinic / Para-clinic
- Clinical Sciences (companion animals)
 - Dogs & Cats & Exotics + SAH
 - Equine
- Clinical Sciences (food-producing animals)
 - Swine
 - Cattle/Small ruminants
 - Poultry
 - Aquatics
- Food Safety & Quality
 - VPH
- VTH
 - SAH
 - FAH
- Campuses (overall facilities / equipment)
 - BKK, NKPT, SRBR
- Quality Assurance
 - Central QA team
 - QA in pivotal units: SAH, FAH, BKK, NKPT, SRBR

**European Association of Establishments for
Veterinary Education**



**Letter from the EAEVE President and the Executive Committee on the
exceptional transitory amendment of the SOP related to the case of force
majeure faced by Establishments during the COVID-19 outbreak of the 1st
Semester 2020**

3rd July 2020



European Association of Establishments for Veterinary Education

**Exceptional transitory amendment of the SOP related to the case of force
majeure faced by Establishments during the COVID-19 outbreak of the 1st
Semester 2020**

Approved by ExCom on 18 June 2020

Road Map: CUVET towards World Education Standards

Project's Objective:

Faculty of Veterinary Science, Chulalongkorn University (CUVET) gets accredited by European Association of Establishments for Veterinary Education (EAEVE) by 2022

Strategic Goals

“World Class National University and Global Ranking”

And

**“GLOCAL”, Global+Local,
Qualities of Students, Teachers,
Researchers and Staffs**

CU VET DNA

C = Captain

U = Unity

V = Visionary

E = Excellence

T = Trust

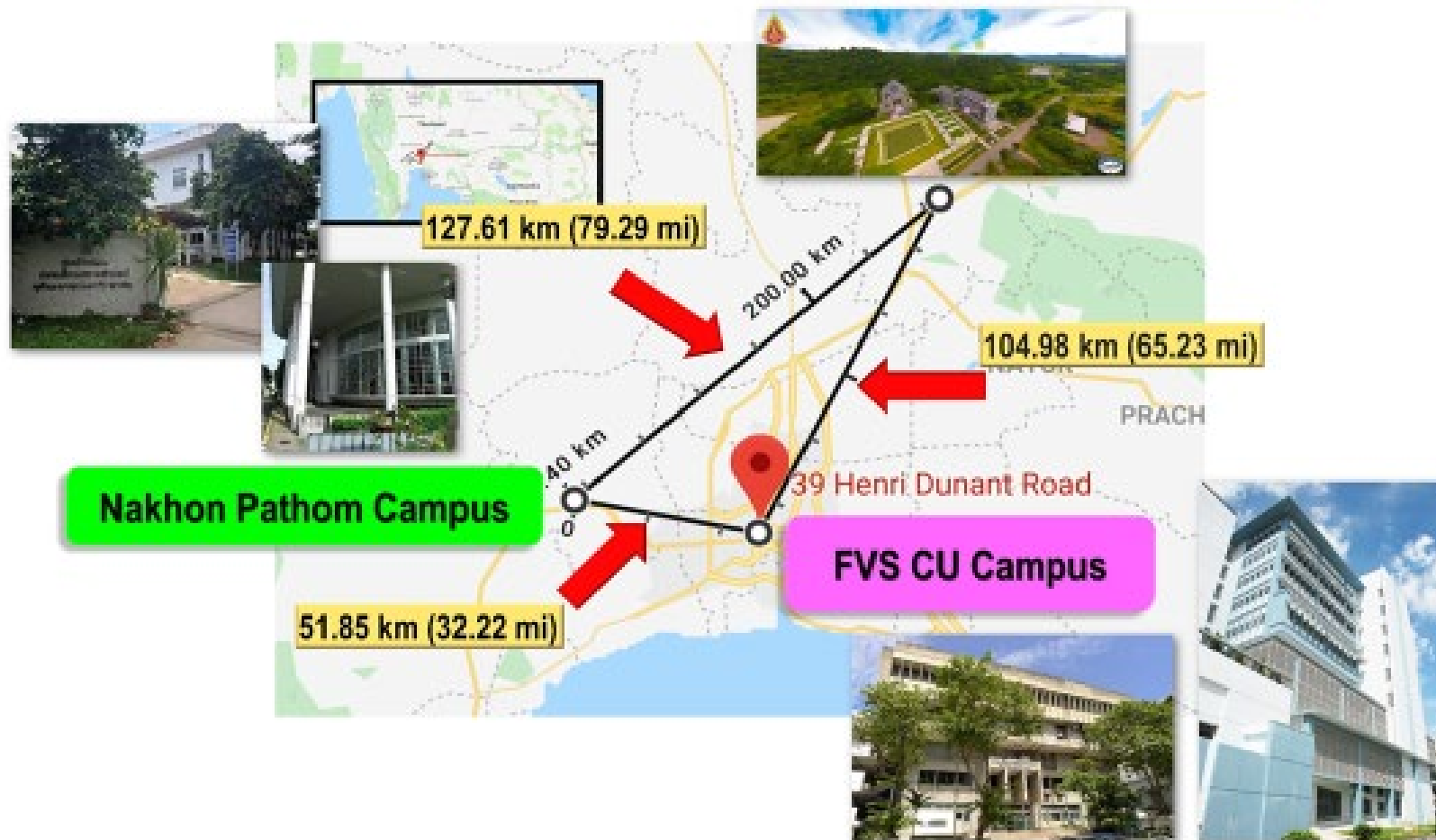


“Visionary Research in Practice”



FVS CU: Facilities

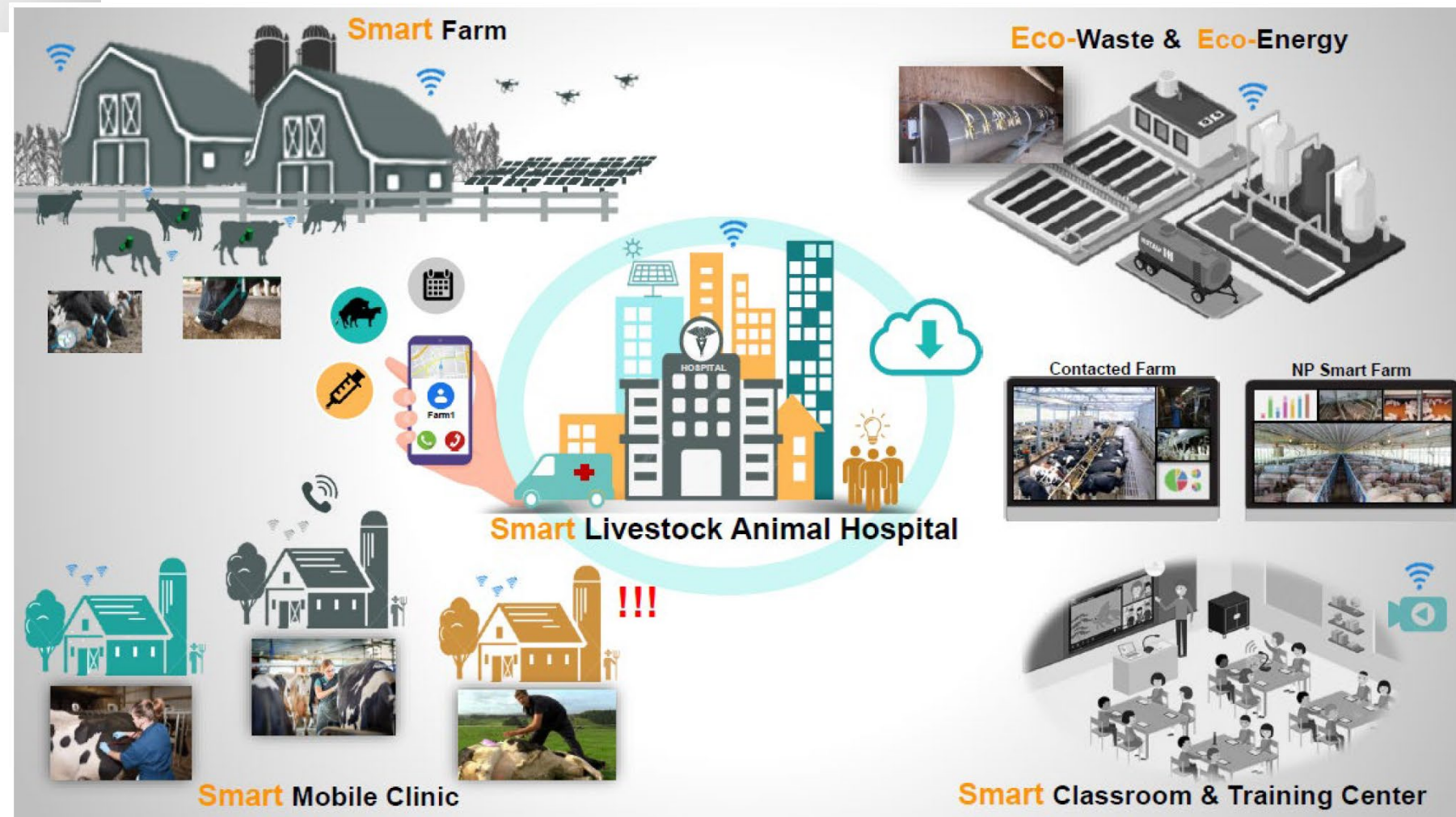
Saraburi Campus





Eco-Smart Campus for Veterinary Training

Faculty of Veterinary Science, Chulalongkorn University



VETERINARY SCIENCE CHULALONGKORN UNIVERSITY


 The European Association of Establishments for Veterinary Education (EAEVE)
 / The European System of Evaluation of Veterinary Training (ESEVT)
 EAEVE / ESEVT Consultative Visitation (June 24-26, 2019)
Faculty of Veterinary Science
Chulalongkorn University
 Bangkok - Thailand



Official "Consultative Visitation [CV]"

BY EAEVE/ESEVT EXPERTS

JUNE 25-26, 2019



Scan for full schedule



Prof. Dr.
Ana Bravo Del Moral
Spain



Prof. Dr.
Arcangelo Gentile
Italy



Prof. Dr.
Pierre Lekeux
Belgium

Tuesday, June 25, 2019 @Meeting room, Floor 10, Small Animal Hospital

- 8.30 - 9.00 Welcome Meeting and Introduction to the Faculty
- 9.00-13.00 In-depth visit at Small Animal Hospital building
- 14.00-15.30 Visit at the 60th Anniversary building
- 15.30-17.00 Virtual visit of other campuses
- Presentation of field practice/rotation
- 17.00-19.00 CV team discussion

Wednesday, June 26, 2019 @Demonstration room, 60th Anniversary building

- 8.30 - 9.00 Meeting with Academic Staffs (All academic staffs are invited)
- 9.00-9.30 Meeting with Graduate Students
- 9.30-10.00 Meeting with Support Staffs
- 10.00-10.30 Meeting with Undergraduate Students

Meeting with CU VET team on specified topics

- 11.00- 12.00 Organization, Finances, and Quality Assurance
- 12.00-13.00 Curriculum
- 14.00-14.30 Facilities
- 14.30-15.00 Animal Resources and Learning Resources
- 15.00-15.30 Student Admission, Progression and Welfare
- Student Assessment
- 15.30-16.00 Academic and Support Staffs
- 16.00-16.30 Research and Post-graduate Programs
- 17.00-19.00 CV team discussion
- 19.00-19.30 Exit Presentation to CU VET

(All Executives, Heads of Departments/Units are invited)

CU VET Towards World Education Standard

Any details, please contact
Veterinary Education and Accreditation Affairs
email: veted.cu@gmail.com, Tel: 02 218 9793

The Faculty of Veterinary Science, Chulalongkorn University has been qualified as an Associate Member of the European Association of Establishments for Veterinary Education (EAEVE) since January 1, 2020

NOW
We're part of EAEVE

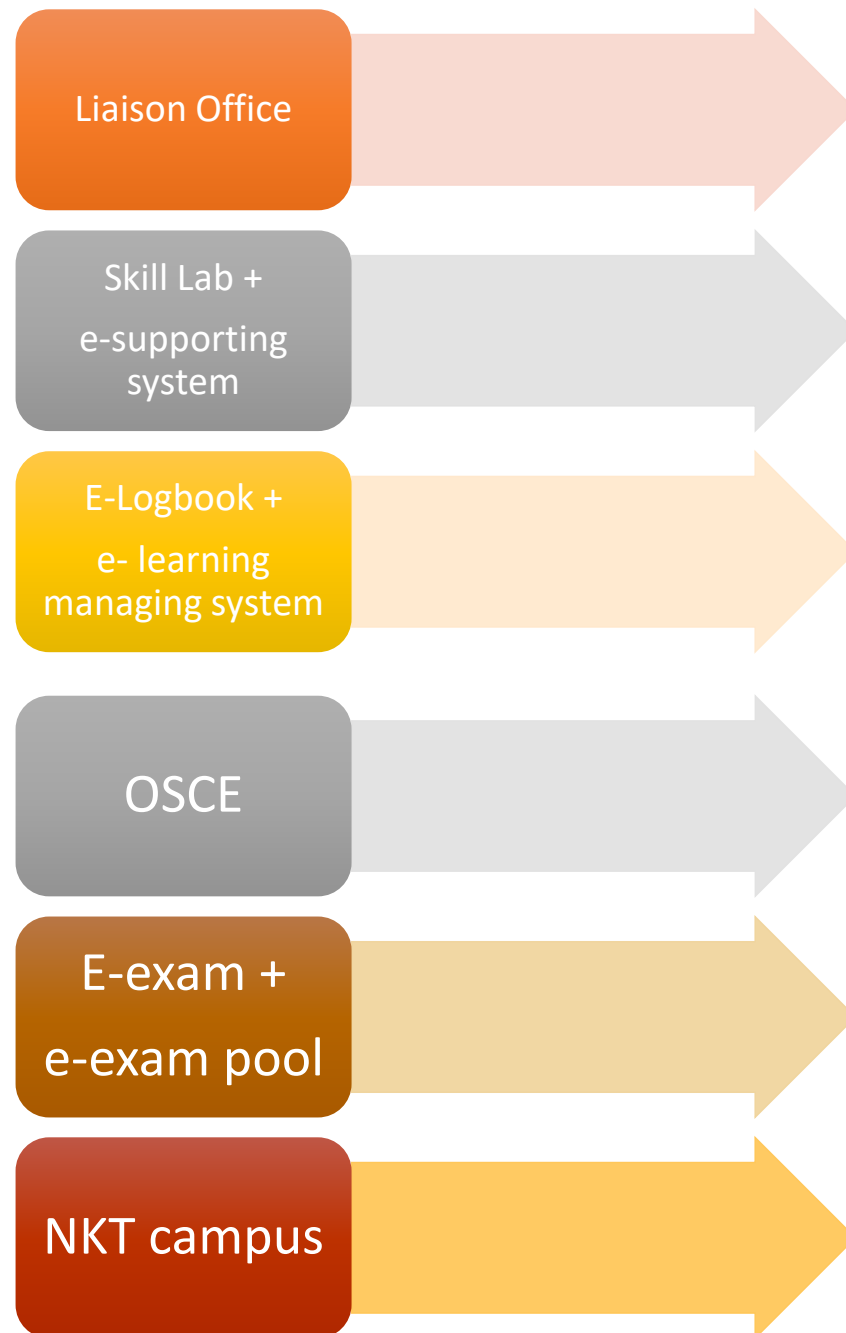


Since January 1, 2020

**คณะสัตวแพทยศาสตร์
จุฬาลงกรณ์มหาวิทยาลัย**
ได้รับเข้าเป็นสมาชิกของ
สมาพันธ์สัตวแพทยศาสตร์ศึกษาแห่งยุโรป
ตั้งแต่วันที่ 1 มกราคม 2563

EAEVE Associate Member

Since Jan 1, 2020



CUVET Competency List

CUVET D1C

D1C: EAEVE + VCT + OIE

| No. | CUVET Competency List (EAEVE 1-36, VCT and OIE 38-44) | OIE | VCT |
|-----|-----------------------------------------------------------------------------------------------------------------------------------------------------------------------------------------------------------------|-----------|-----------|
| 1 | Understand the ethical and legal responsibilities of the veterinarian in relation to animals under his/her care, the environment, clients, policies and society. | 2.9 | 1, 37 |
| 2 | Demonstrate knowledge of the organisation, management and legislation related to a veterinary business economics and employment rights. | | 12 |
| 3 | Promote, monitor and maintain health and safety in the veterinary setting; demonstrate knowledge of systems of quality assurance; apply principles of risk management to their practice. | | - |
| 4 | Communicate effectively with clients, the public, professional colleagues and responsible authorities, using language appropriate to the audience concerned and in full respect of confidentiality and privacy. | 2.11, 3.8 | 6, 32, 37 |
| 5 | Prepare accurate clinical and client records, and case reports when necessary, in a form satisfactory to colleagues and understandable by the public. | | 7 |
| 6 | Work effectively as a member of a multi-disciplinary team in the delivery of services. | | 8 |

| | |
|----|------------------------------------------------------------------------------------------------------------------------------------------------------------------------------------------------------------------------------|
| 7 | Understand the economic and emotional context in which the veterinarian operates. |
| 8 | Be able to review and evaluate literature and presentations critically. |
| 9 | Understand and apply principles of clinical governance, and practise evidence based veterinary medicine. |
| 10 | Use their professional capabilities to contribute to the advancement of veterinary knowledge and One Health concept, in order to improve animal health and welfare, the quality of animal care and veterinary public health. |
| 11 | Demonstrate ability to cope with incomplete information, deal with contingencies, and adapt to change. |
| 12 | Demonstrate that they recognise personal and professional limits, and to seek professional advice, assistance and support when necessary. |
| 13 | Demonstrate an ability of lifelong learning and a commitment to learn for professional development. This includes recording and reflecting on practice experience and taking measures to improve performance and competence. |

| | | | |
|----|---------------------------------------------------------------------------------------------------------------------------------------------------------------------------------------------------------------------------------------------------------------------------------------------------------------------|-------------------------|------------|
| 32 | Recognise when euthanasia is appropriate and perform it with respect of the animal, using an appropriate method, whilst showing sensitivity to the feelings of owners and others, with due regard to the safety of those present; advise on disposal of the carcase. | 2.8 | 33, 22 |
| 33 | Perform a systematic gross post-mortem examination, record observations, sample tissues, store and transport them. | | 33 |
| 34 | Perform ante-mortem inspection of animals destined for the food-chain, including paying attention to welfare aspects; correctly identify conditions affecting the quality and safety of products of animal origin, to exclude those animals whose condition means their products are unsuitable for the food-chain. | 2.6, 3.2 | 34, 21 |
| 35 | Perform inspection of food and feed including post-mortem inspection of food producing animals and inspection in the field of related food technology. | 2.6 | 21 |
| 36 | Advise on, and implement, preventive and eradication programmes appropriate to the species and in line with accepted animal health, welfare and public health standards. | 2.1, 2.2, 2.5, 2.8, 3.3 | 20, 35, 37 |
| 37 | VCT 13 ความรู้พื้นฐานด้านวิทยาศาสตร์ | | |
| 38 | VCT 15 anatomy | | |
| 39 | VCT 36 records and analyze farming performance | | |
| 40 | VCT 38 risk analysis – food safety | 2.6, 3.4, 3.5 | |
| 41 | OIE 2.4 Emerging and re-emerging diseases | | |
| 42 | OIE 2.7 Veterinary products | | |
| 43 | OIE 2.10.General certification procedures and 3.1. Organisation of Veterinary Services | | |
| 44 | OIE 3.7. International trade framework | | |

| | | | |
|----|--------------------------------------------------------------------------------------------------------------------------------------------------------------|-----|--------|
| 14 | Take part in self-audit and peer-group review processes in order to improve performance. | | 4 |
| 15 | Obtain an accurate and relevant history of the individual animal or animal group, and its/their environment. | | 23 |
| 16 | Handle and restrain animal patients safely and with respect of the animal, and instruct others in helping the veterinarian perform these techniques. | | 25 |
| 17 | Perform a complete clinical examination and demonstrate ability in clinical decision-making. | | 16, 24 |
| 18 | Develop appropriate treatment plans and administer treatment in the interests of the animals under their care with regard to the resources available. | | 24 |
| 19 | Attend in an emergency and perform first aid in common animal species*. | | 27 |
| 20 | Assess the physical condition, welfare and nutritional status of an animal or group of animals and advise the client on principles of husbandry and feeding. | 2.8 | 37, 22 |
| 21 | Collect, preserve and transport samples, select appropriate diagnostic tests, interpret and understand the limitations of the test results. | | 28 |

| | | |
|---------------------------|-------------------------|----|
| vices, | 2.11 | 39 |
| iques can / out an a good | | 29 |
| es as well as rthorities. | 2.1, 2.2, 2.3, 2.5, 3.3 | 16 |
| | | 18 |
| ance with | | 19 |
| | | 19 |
| | | 20 |
| | | 30 |
| ment | | 31 |
| | | 31 |

Species according to Indicators:

- ruminant and pig
- equine
- rabbit, rodent, bird and exotic
- companion animal
- poultry

What is CUVET Skill Lab Center ?



Independent Practice Space for hands-on/ practical skill development.

Under the vision to incubate the veterinary students to acquire practical skills to reach the requirement of veterinary competencies, we focus on providing with a wide range of veterinary learning aids, from the very basic to advanced tools, to help students gain theoretical knowledge and practical skills through self-learning and repetitive practice.

Why Is Skill Lab Important?

1. Educational facility suitable for veterinary students in every level
2. Before real clinical practice, students will be equipped with know-how to work with animals confidently and safely. This is for the safety – to protect the practitioners themselves and for the welfare of animals.
3. It is one of the most effective ways to ensure that the veterinary students perform practical skills and efficiency

ROOM RESERVATION



ROOM RESERVATION  **CLICK HERE**

CATEGORIES

■ Uncategorized

ROOM DIAGRAM



| Color | Department |
|-------------|------------------|
| Orange | PC |
| Yellow | Medicine |
| Green | Pharmacology |
| Red | Surgery |
| Blue | Animal Husbandry |
| Light Green | Physiology |
| White | OGR |

CATEGORIES

■ Uncategorized





เข้าสู่ระบบ
หรือลงทะเบียนใช้งาน

ติดต่อ / ขอความช่วยเหลือ : (Ins) --

สนับสนุนการพัฒนาโดย
กองทุนวิจัยและพัฒนาโครงการกระจายเสียง กิจการโทรทัศน์
และกิจการโทรคมนาคมเพื่อประโยชน์สาธารณะ (กทปส.)



CU VET Smart School

- MOU with Engineering School, CU
- Gather all data & start: Academic year 63

E-Logbook +
e- learning
managing system



เข้าสู่



ล็อกอินด้วยบัญชี



ล็อกอินโดยใช้ ☒ ชื่อบัญชี (Username) ☐ อีเมล (Email)

ชื่อบัญชี (Username)

รหัสผ่าน

☐ จดจำการล็อกอินนี้ไว้

เข้าสู่ระบบ

ลืมรหัสผ่าน? ลงทะเบียนบัญชีใหม่

E-exam + exam analysis system + pooling system

EXAM+

All

210630_Vet Pharm II (63-2) (re-exam)

30 Jun 2021 11:15

210411_63-2_Vet Pharm II (topic 18-19)_CS exam

11 Apr 2021 11:20

210207_63-2_Vet Pharm II (topic 1-8)_MARKS_CS exam

7 Feb 2021 10:00

210207_63-2_Vet Pharm II (topic 1-8)_CS exam

7 Feb 2021 10:00

210203_Exam+ rehearsal_mock up exam

3 Feb 2021 10:00

Exam plus system (generated by Fac of Engineering, CU)

EXAM+

Veterinary Pharmacology II

Banks

7

Examinations

5

Users

2

Questions

201


2021

Sep

Month

Year

| Su | Mo | Tu | We | Th | Fr | Sa |
|----|----|----|----|----|----|----|
| 29 | 30 | 31 | 01 | 02 | 03 | 04 |
| 05 | 06 | 07 | 08 | 09 | 10 | 11 |



LOG IN

Username

Password

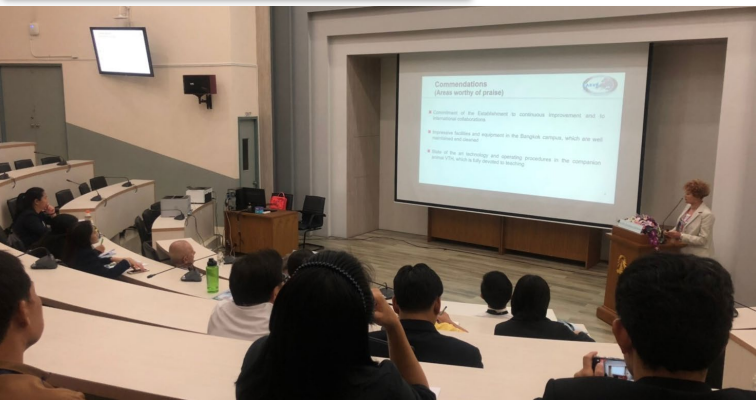
Forgot Password

Sign in

Continue with Google

Not on Exam Plus yet? Sign up

25





vet@chula.ac.th

