



Dr Morgan Jeannin

Antimicrobial Resistance and Veterinary
Products Department

Scope of the OIE AMU Data Collection

Webinar for Asia, Far East and Oceania
11-12 May 2021



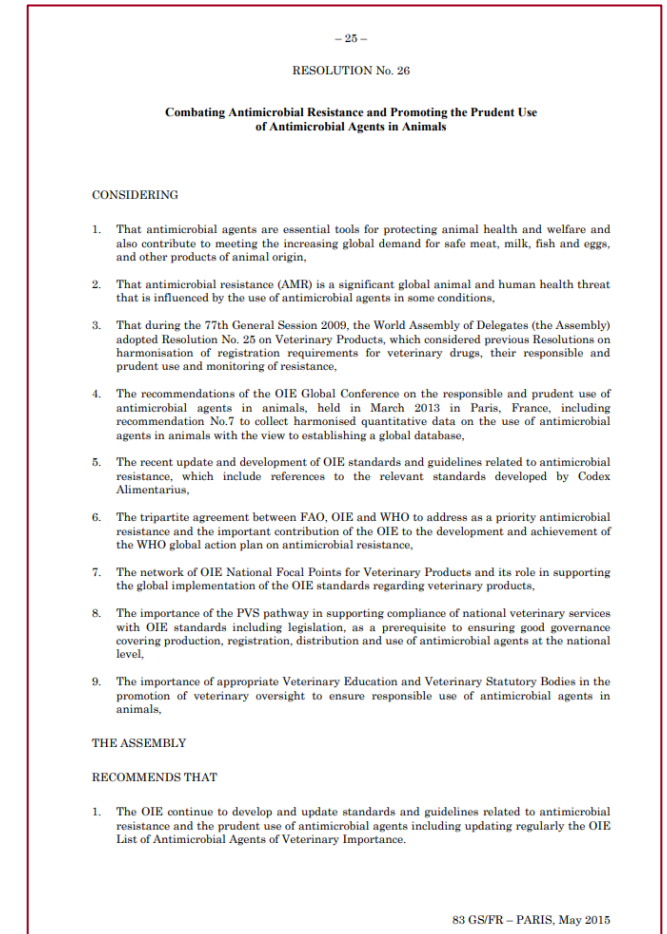
Organisation
Mondiale
de la Santé
Animale

World
Organisation
for Animal
Health

Organización
Mundial
de Sanidad
Animal

Resolution 26 “*Combating AMR and Promoting the Prudent Use of Antimicrobial Agents in Animals*”

- The OIE develops a procedure and standards for data quality for *collecting data annually* from OIE Member Countries *on the use of antimicrobial agents* in food-producing animals with the aim of *creating an OIE global database...*



Reporting AMU quantities

Collecting AMU globally in a harmonized way

The screenshot shows the OIE Questionnaire (Excel) form. It includes sections A, B, and C. Section A is for contact person details, B is for antimicrobial agents used for growth promotion, and C is for data collection for use in humans. The form is in Spanish and includes various checkboxes and text fields for data entry.

OIE Questionnaire
(Excel)

Reporting Option 1

- Antimicrobial agents
- Type of use*

Reporting Option 2

- Antimicrobial agents
- Type of use*
- Group of animals**

Reporting Option 3

- Antimicrobial agents
- Type of use
- Group of Animals**
- Routes of administration

Antimicrobial Class
Aminoglycosides
Amphenicols
Arsenicals
Cephalosporins (all generations)
1-2 gen. cephalosporins
3-4 gen cephalosporins
Fluoroquinolones
Glycopeptides
Glycophospholipids
Lincosamides
Macrolides
Nitrofurans
Orthosomycins
Other quinolones
Penicillins
Pleuromutilins
Polypeptides
Quinoxalines
Streptogramins
Sulfonamides (including trimethoprim)
Tetracyclines
Others
Aggregated class data
Total kg

Quantities aggregated by antimicrobial classes



Organisation
Mondiale
de la Santé
Animale

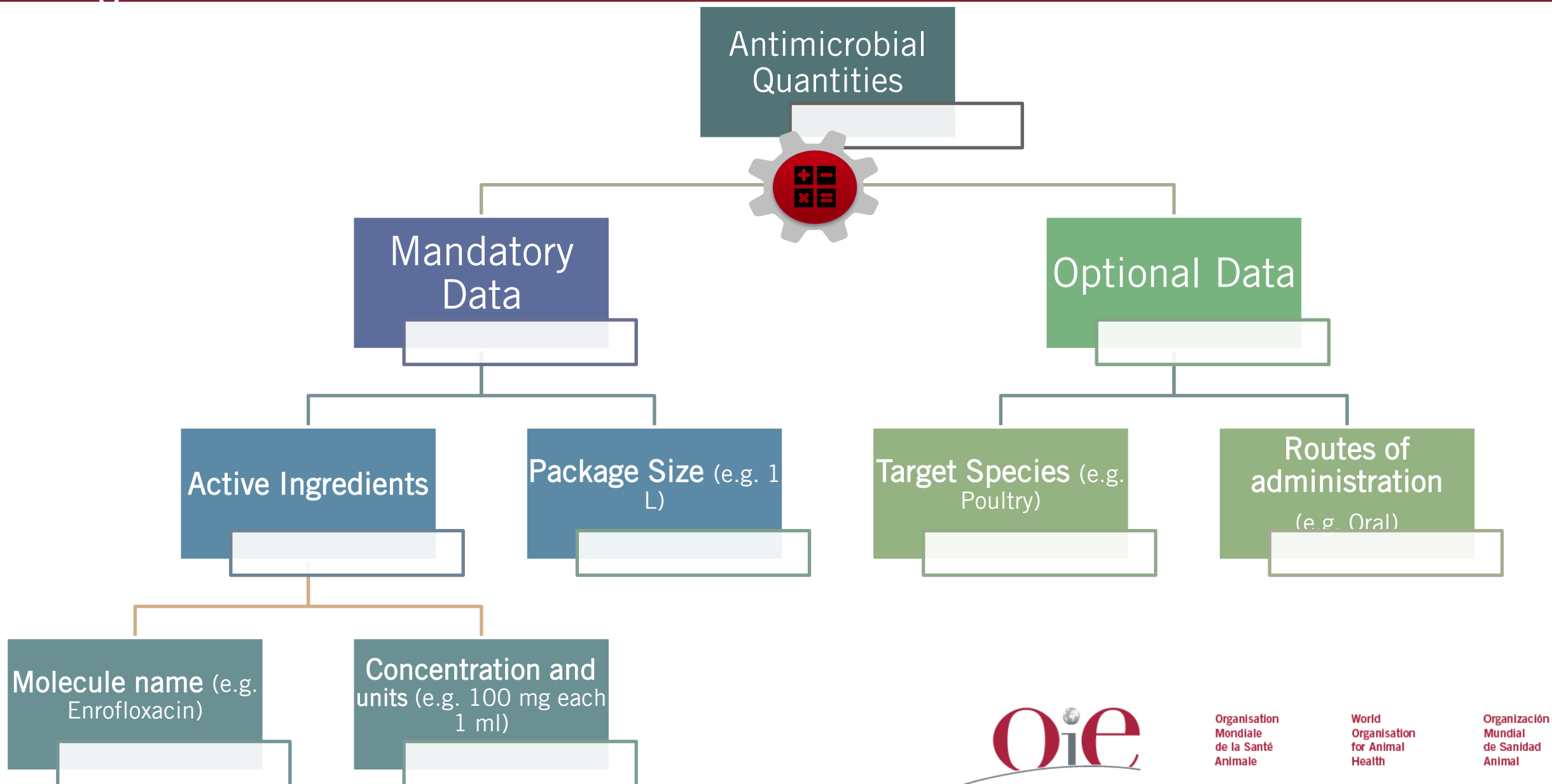
World
Organisation
for Animal
Health

Organización
Mundial
de Sanidad
Animal

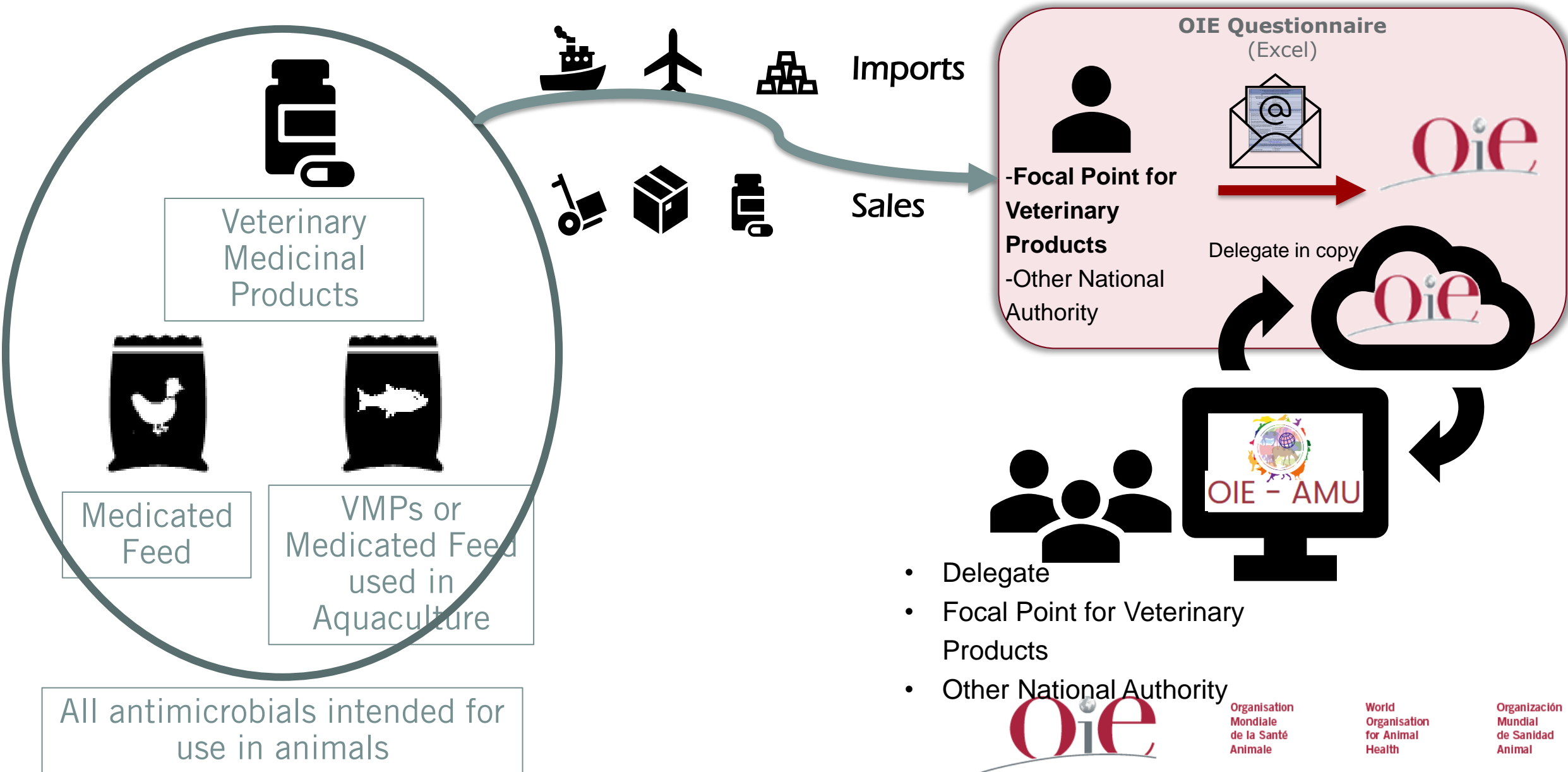
Additional support for countries in the reporting of antimicrobial quantities

Calculation Tool
(Excel)

Which data do you need to have for obtaining kilograms of active ingredients?



AMU Data Collection Process





The OIE-AMU Global Database

Disambiguation



Organisation
Mondiale
de la Santé
Animale

World
Organisation
for Animal
Health

Organización
Mundial
de Sanidad
Animal

The OIE-AMU Global Database will...

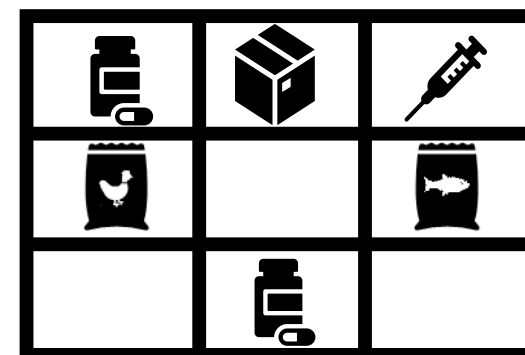
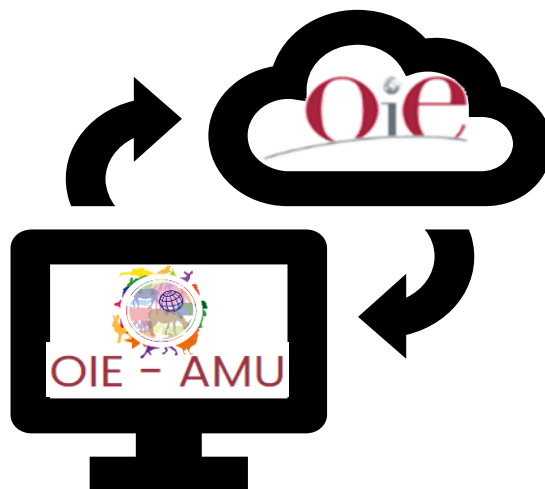


Be the new interface to report AMU data to the OIE AMU data collection



Not manage the registration of veterinary products in my country

Allows online access to complete the OIE AMU questionnaire and upload data collected offline



The OIE-AMU Global Database will...



Grant a secured access to your country's historical data submitted to OIE

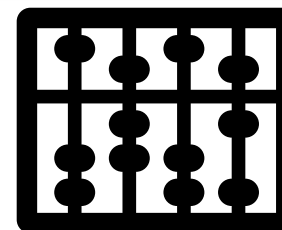


Restricted to the:

- Delegate
- Focal Point for Veterinary Products
- Other National Authority



Not give access to importers, wholesalers, veterinarians to your country's portal



You will still be responsible for the consolidation of the data originating from imports, sales or other data sources.

The OIE-AMU Global Database will...



Present results of the OIE AMU data collection at a global and regional level in the public portal



Hosts a portal to display public data and generate graphs – as the ones presented in the OIE AMU Annual Report



Not reveal your country's portal data

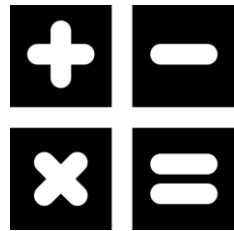


Provides a secure and protected access to your country's AMU data

The OIE-AMU Global Database will...



Assist in the calculation of antimicrobial quantities with its Calculation Module



Enables you to generate an OIE Reporting Option from your data at a product level



Not replace your interactions with the AMU Team

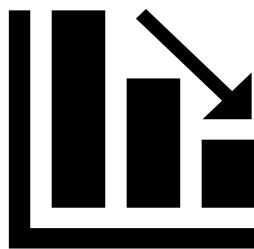
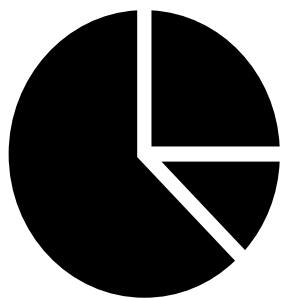


The AMU Team will continue to guide and assist you in the data collection and verification process

The OIE-AMU Global Database will...



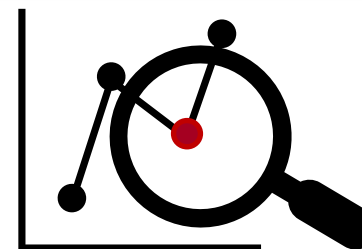
Provide insightful analysis and reporting of my country's data



Offers the possibility to visualise your AMU data in different ways and to adjust the antimicrobial quantities by the OIE animal biomass denominator (provided by OIE)



Not require time-consuming workload



Will aid in efficiently detecting data errors



Thank you for your attention!

For more information, contact the AMU Team
at antimicrobialuse@oie.int



Organisation
Mondiale
de la Santé
Animale

World
Organisation
for Animal
Health

Organización
Mundial
de Sanidad
Animal

www.oie.int