

# Member's update on ASF

## [Republic of Korea]

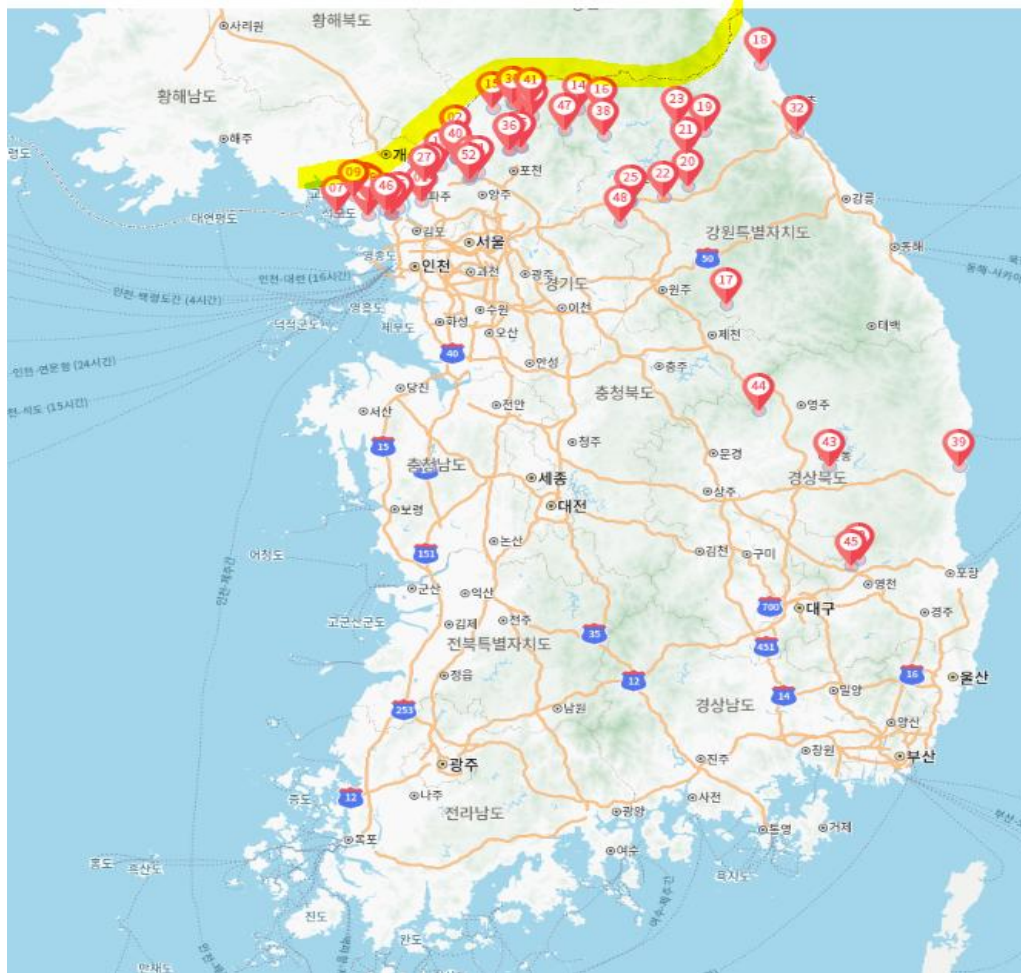
Jeongseo Park, DVM

Assistant Director  
FMD and Large Animal Health Control Division

22 – 23 July 2025

Tokyo, Japan

# ASF situation in Korea\_Domestic Pig(1)



## Outbreaks in Domestic Pig Farms (2019–2025)

**Total: 52 outbreaks across 19 counties**

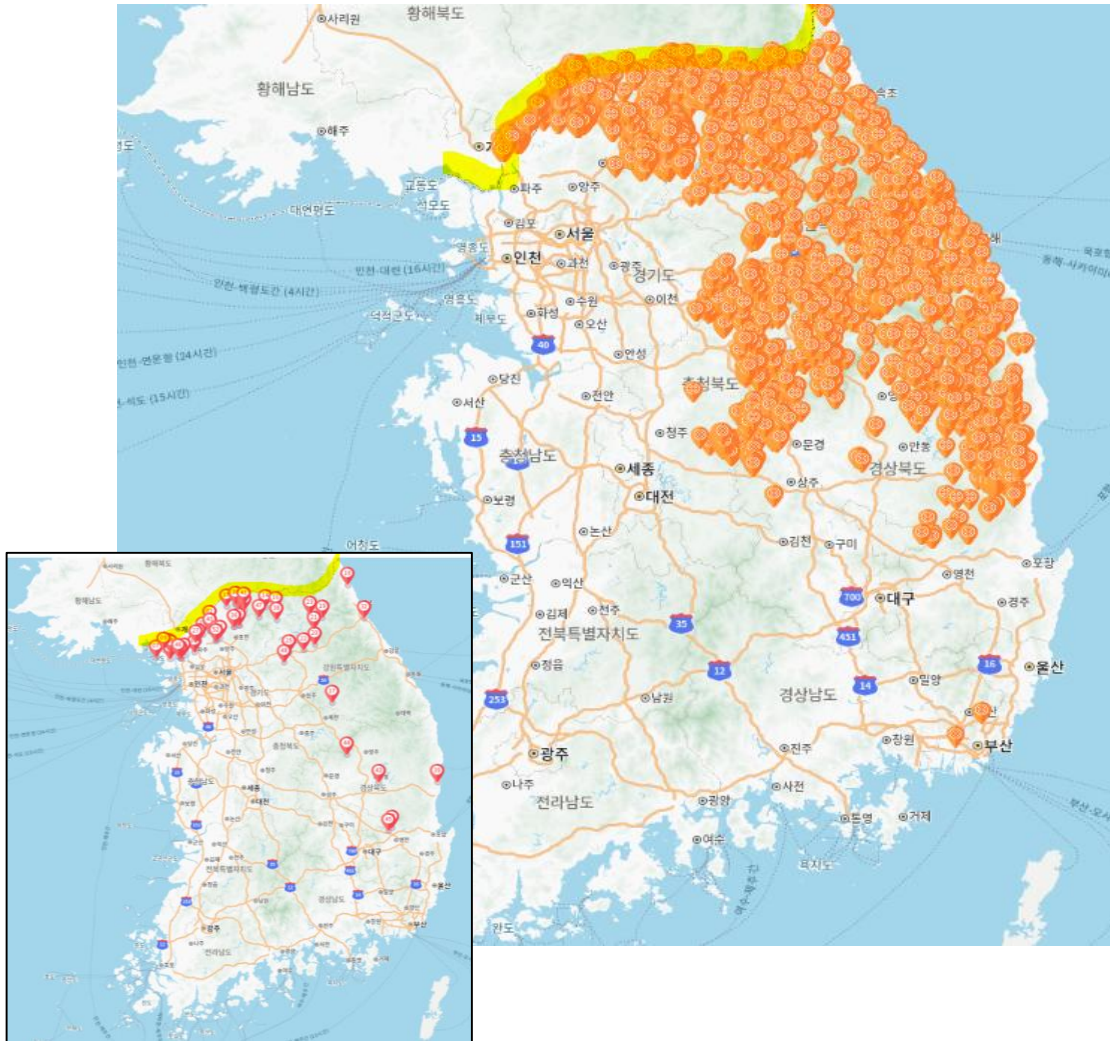
- 2019.9–10: 14 cases
- 2020.10: 2 cases
- 2021.5–10: 5 cases
- 2022.5–11: 7 cases
- 2023.1–9: 10 cases
- 2024.1–12: 11 cases
- 2025.1–3: 3 cases

# ASF situation in Korea\_Domestic Pig(2)

## Seasonal ASF outbreak by Year (Domestic Pigs)

Year	Winter (Dec–Feb)	Spring (Mar–May)	Summer (Jun–Aug)	Fall (Sep–Nov)	Total
2019	-	-	-	14 cases	14
2020	-	-	-	2 cases	2
2021	-	3 cases	2 cases	-	5
2022	-	5 cases	-	2 cases	7
2023	2 cases	6 cases	1 case	1 case	10
2024	5 cases	2 cases	2 cases	2 cases	11
2025	3 cases (as of July)	-	-	-	3

# ASF situation in Korea\_Wild Boar(1)

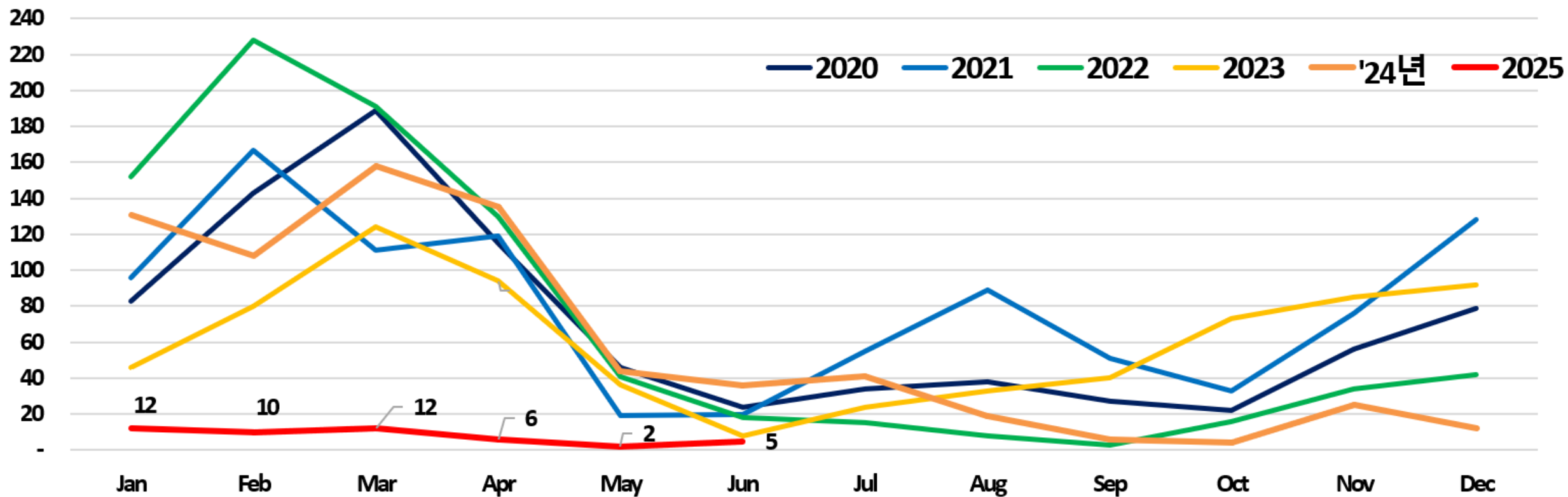


## Wild Boar Detections (2019–2025)

**Total: 4,249 cases across 43 counties**

- 2019: 55 cases
- 2020: 856 cases
- 2021: 964 cases
- 2022: 878 cases
- 2023: 735 cases
- 2024: 719 cases
- 2025 (Jan–May): 42 cases

# ASF situation in Korea\_Wild Boar(2)



# ASF situation in Korea\_genetic analysis of ASFV

Year	Domestic pigs					Wild boar				
	IGR			MGF 360-1La		IGR			MGF 360-1La	
	I	II	III	WT (wild type)	MT (mutant type)	I	II	III	WT (wild type)	MT (mutant type)
2019	0	14	0	14	0	1	52	0	54	0
2020	0	2	0	2	0	0	832	0	739	49
2021	0	5	0	2	0	0	808	0	673	193
2022	0	7	0	10	0	0	851	0	669	105
2023	1	9	0	10	0	0	710	4	550	34
2024	0	10	1	11	0	0	485	35	448	23
Subtotal	1	47	1	46	0	1	3,738	42	3,133	405
Grand Total	49			49		3,781			3,538	

# Surveillance

## ➤ Active Surveillance

Category	Target / Description	Frequency
Domestic pigs	All domestic pig farms (5,161 farms, 51,610 pigs)	1/year
	Vulnerable farms (325 farms, 3,250 pigs)	1/year
	High density farm regions (251 farms, 2,510 pigs)	1/year
	ASF special management regions (196,180 pigs)	When pigs are moved outside the designated zone
Facilities	Abattoir	monthly
	Feed, feces processing facilities	quarterly
Environment	Environmental samples around farms in areas with ASF positive wild boars	monthly
	Environmental samples related to transmission	continuous
Wild boars*		continuous

\* Samples from ASF-free region: APQA, Samples from ASF occurring area: NIWDPC



# Surveillance

## ➤ Active Surveillance

### ✓ Domestic pigs

Year	2019	2020	2021	2022	2023	2024
No. of pigs	100,000	119,263	275,639	309,623	315,049	361,939
No. of farms	9,950	15,522	30,862	31,325	26,223	28,979

\* 2025 plan (25,355 farms / 275,570 pigs)

- ▶ All pig farms nationwide (5,161 farms / 51,610 pigs)
- ▶ Farms located in high-risk areas (325 farms / 3,250 pigs)
- ▶ Vulnerable farms such as mixed-farming operations (215 farms / 2,510 pigs)
- ▶ Zonal movement testing (19,618 farms / 196,180 pigs)

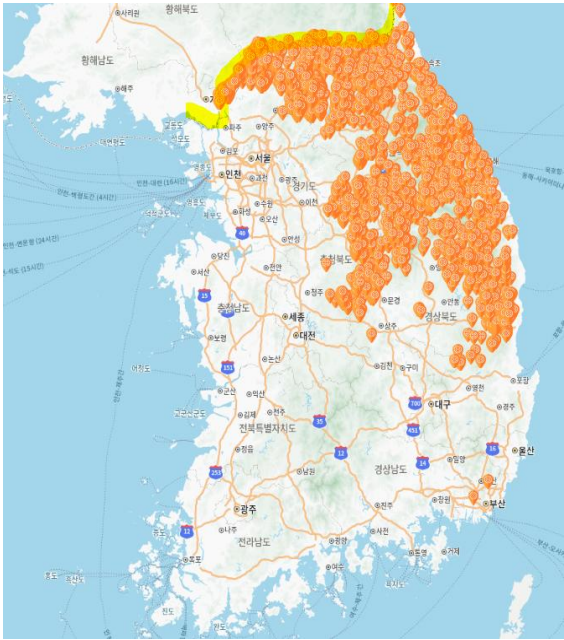


# Surveillance

➤ Active Surveillance

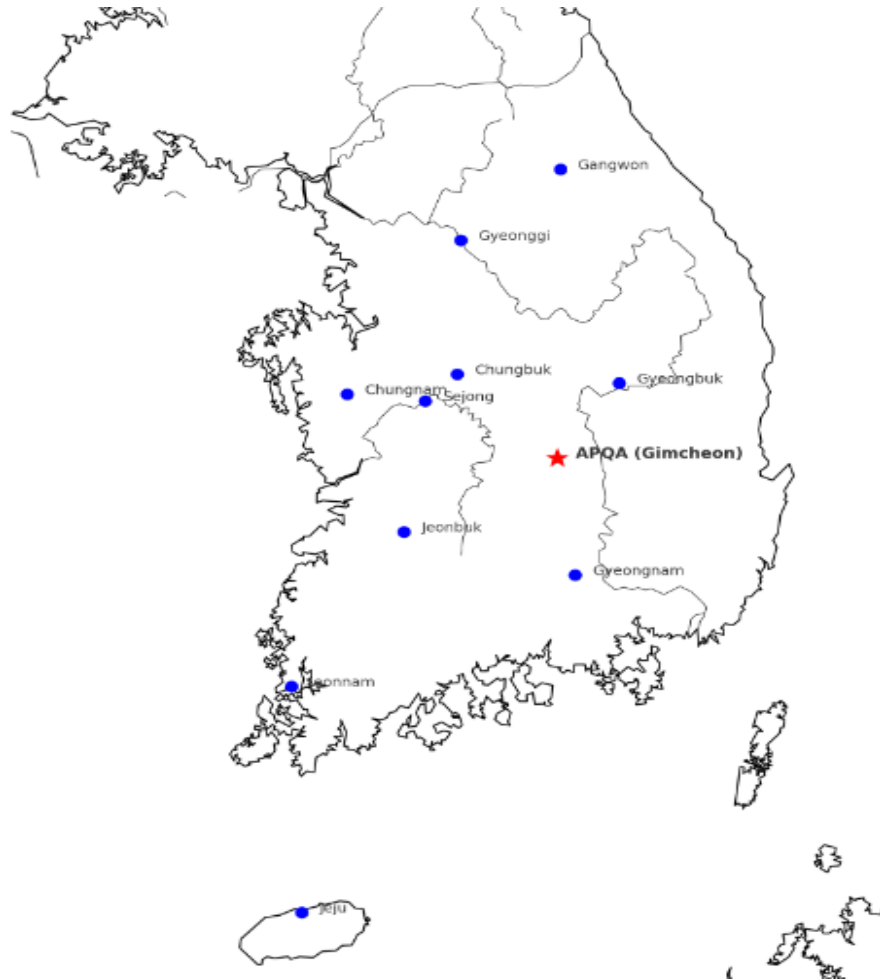
✓ Wild boars

Year	2019	2020	2021	2022	2023	2024
Heads	48,651	97,250	71,943	76,736	73,893	95,629
No. of positive cases	55	856	964	878	735	719



- \* 2025 plan (2,000 by MAFRA, 50,530 by Ministry of Environment)
- \*\* Cooperation with Ministry of National Defense & Environment (wild boars in DMZ)

# Laboratory capacity



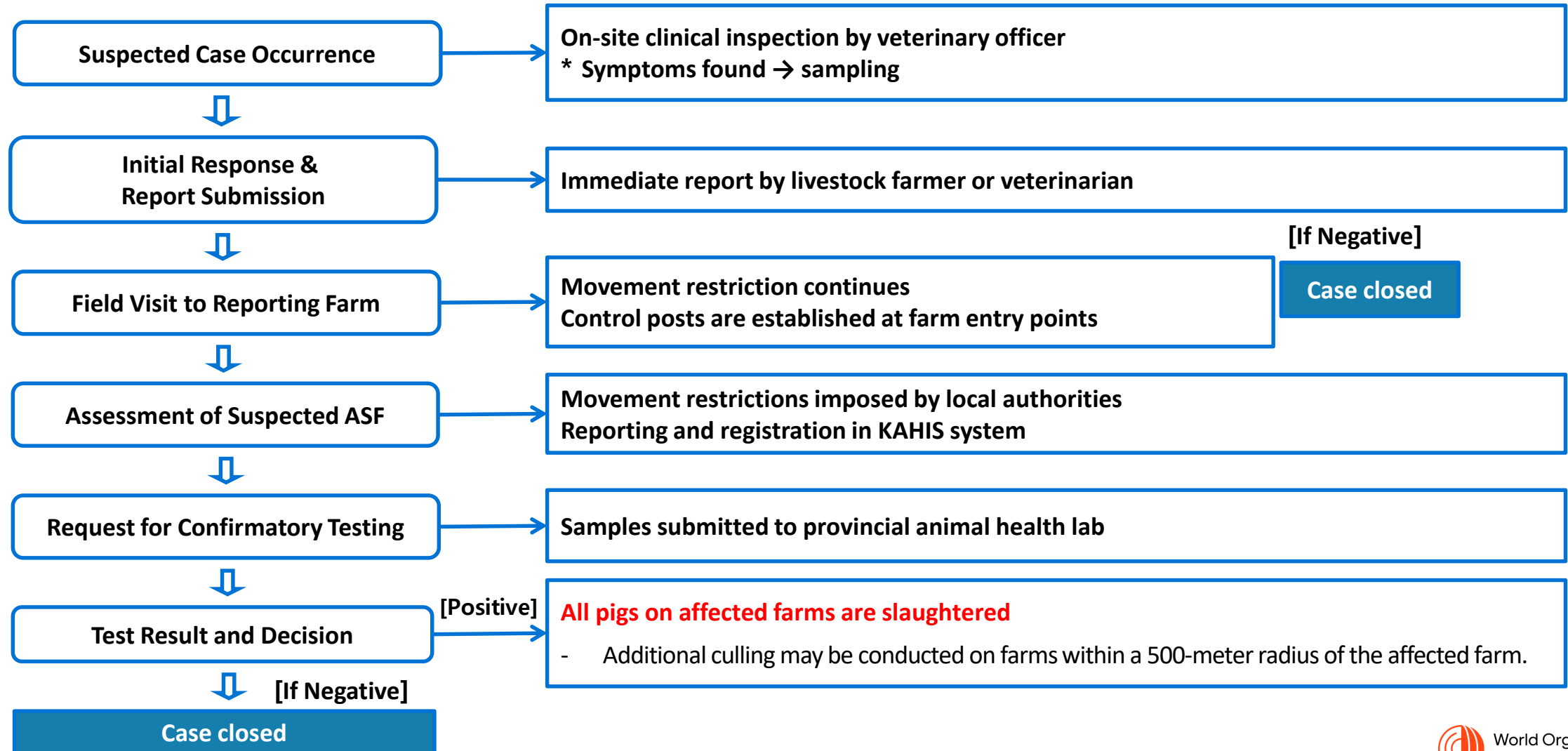
## ASF Confirmation diagnosis required for:

- All notified suspect cases
- Samples found positive during routine active surveillance of domestic pigs by regional laboratories

## Labs conducting confirmatory diagnosis:

- **Foreign Animal Disease Division, APQA**
  - national reference laboratory for ASF
- **Regional laboratories (10 labs)**
  - accredited for ASF confirmation diagnosis

# Detection & Reporting Workflows



# Thank you

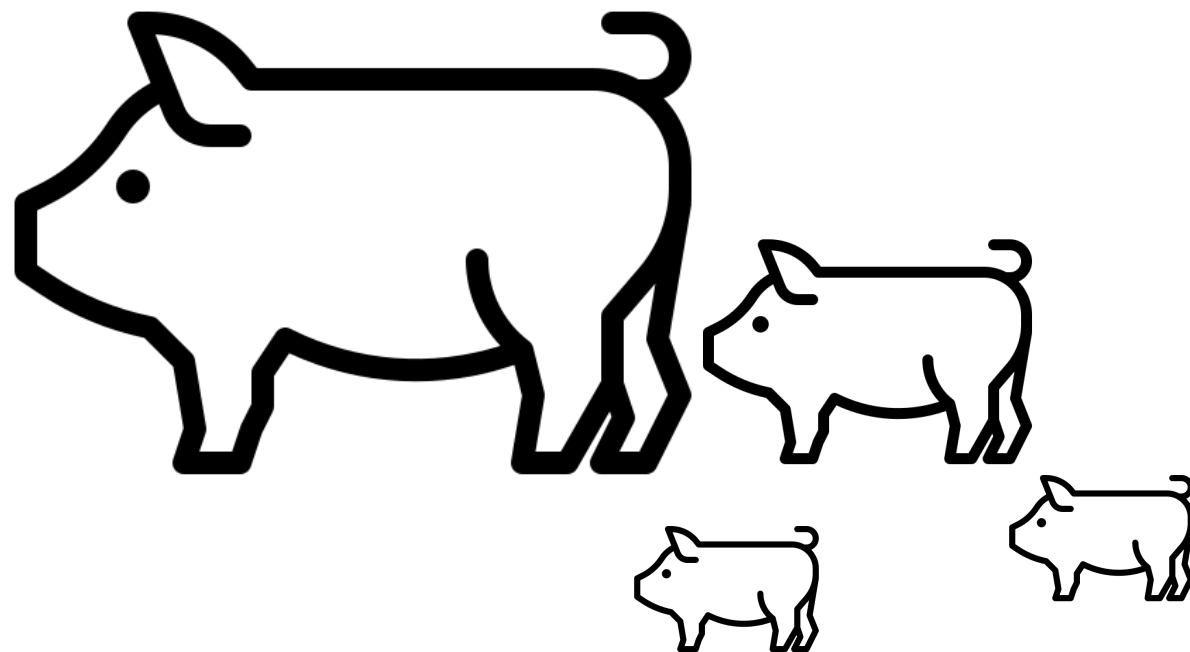
---

Park Jeongseo, DVM

Assistant Director, FMD and Large Animal Health Control Division

[tankjs@korea.kr](mailto:tankjs@korea.kr)

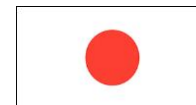
---



World Organisation  
for Animal Health

**中华人民共和国农业农村部**

Ministry of Agriculture and Rural Affairs of the People's Republic of China



Ministry of Agriculture,  
Food and Rural Affairs