

# Recap day 1



With support from:

**中华人民共和国农业农村部**  
Ministry of Agriculture and Rural Affairs of the People's Republic of China

**4<sup>TH</sup> AFRICAN SWINE FEVER (ASF) COORDINATION MEETING FOR SOUTH-EAST ASIA**  
26–28 November 2024, Hanoi, Vietnam



# Opening Session



BỘ NÔNG NGHIỆP VÀ PHÁT TRIỂN NÔNG THÔN  
MINISTRY OF AGRICULTURE AND RURAL DEVELOPMENT



**LỄ TRAO KỶ NIỆM CHƯƠNG**  
**“VÌ SỰ NGHIỆP NÔNG NGHIỆP VÀ PHÁT TRIỂN NÔNG THÔN”**  
CHO ÔNG RONELLO CASIO ABILA, TRƯỞNG ĐẠI DIỆN VĂN PHÒNG KHU VỰC ĐÔNG NAM Á CỦA  
TỔ CHỨC THỦ Y THẾ GIỚI (WOAH)

**COMMEMORATIVE MEDAL**  
**“FOR THE CAUSE OF AGRICULTURE AND RURAL DEVELOPMENT IN VIETNAM”**  
FOR DR. RONELLO CASIO ABILA, WOAH SUB- REGIONAL REPRESENTATION FOR SOUTH- EAST ASIA

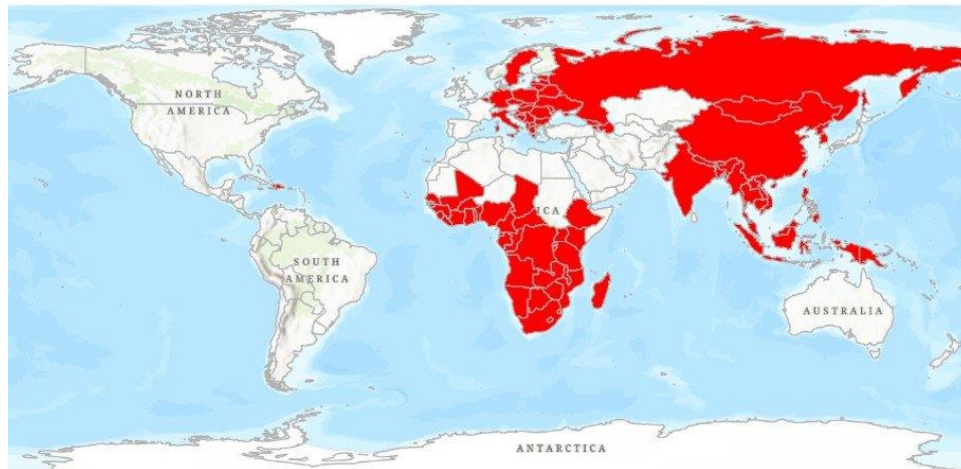
*Hà Nội, ngày 26 tháng 11 năm 2024*

# Technical Session

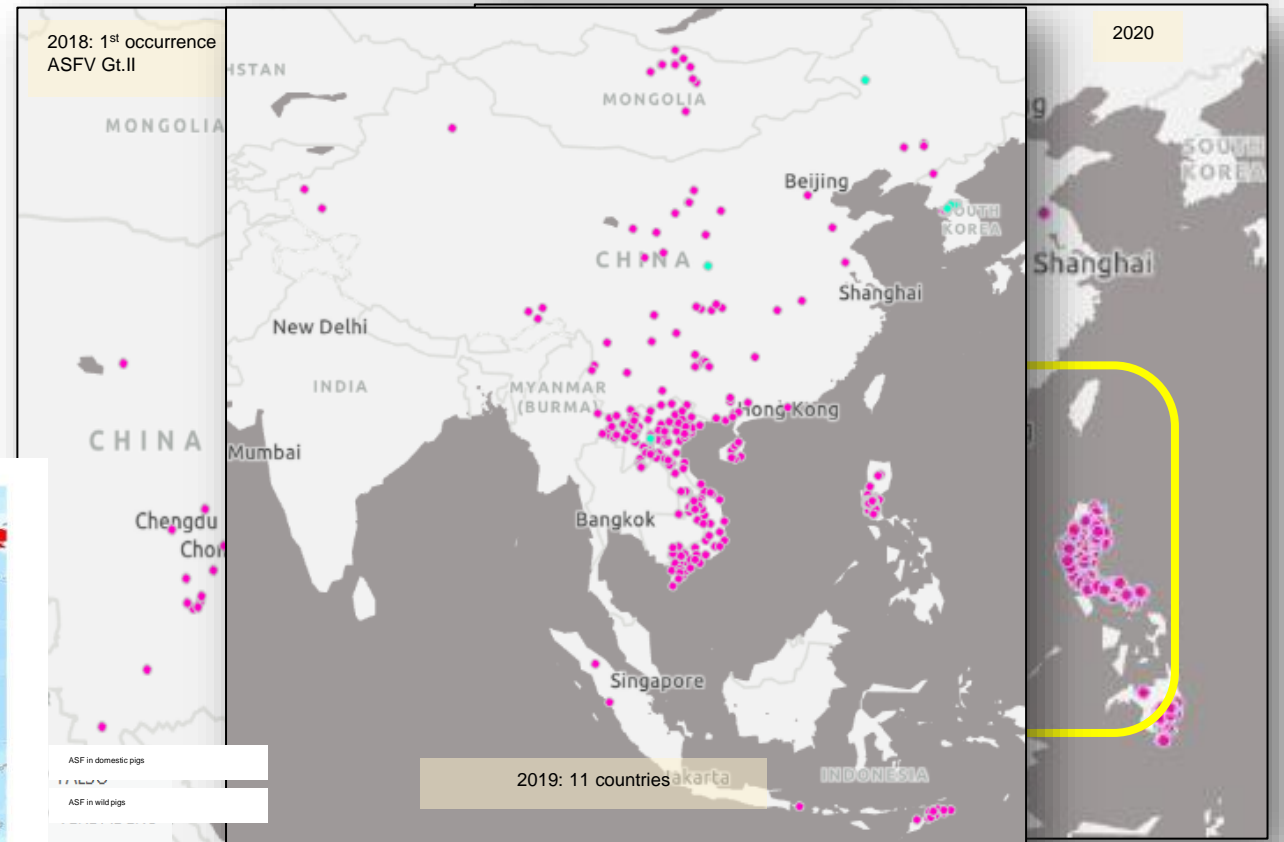
## Global, regional and sub-regional ASF activities

- Update Global ASF Initiatives
- Regional GF-TADs activities
- ASF Sub Regional activities SEA

## Global and regional ASF situation



## 7 years of AFSV spread in Asia-Pacific region



# Partners presentation:

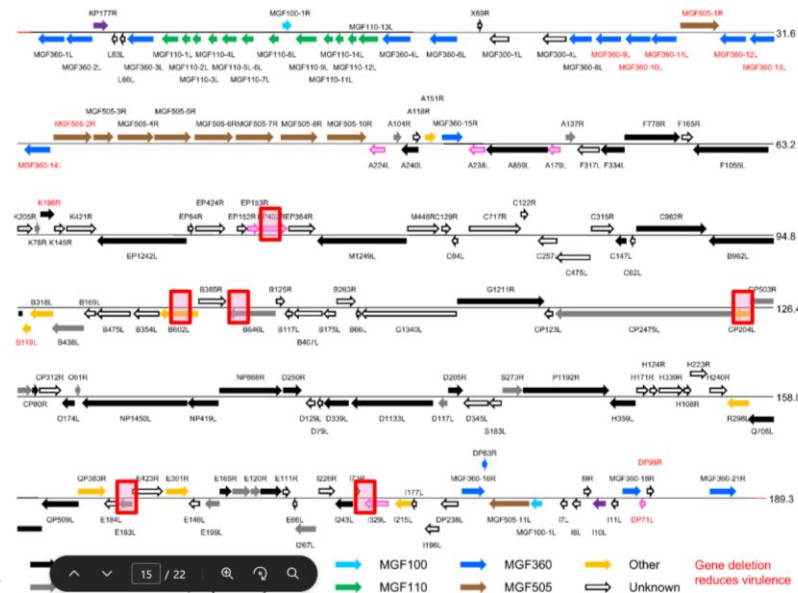
ACDP



A role for whole genome sequencing (WGS) for molecular epidemiology?

The ASFV genome is very large and highly stable. Individual gene targets (□) are of limited use for the identification of variants and the application of phylogeny for studying evolution

WGS are increasingly being used for these purposes



Alonso et al. J. Gen. Virol., 99: 613–614 (mod.)

FAO

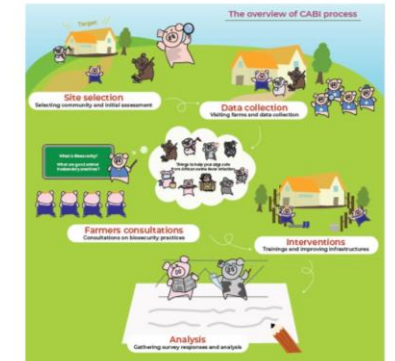
## CABI: Community ASF Biosecurity Interventions

Implementing biosecurity practices is essential for maintaining the health and well-being of animals.

**Be a champion farmer**  
with biosecurity practices

- Restrict movements
- Wash hands with soap
- No swill feeding
- Disinfect frequently
- Report unusual events
- Clean farm regularly

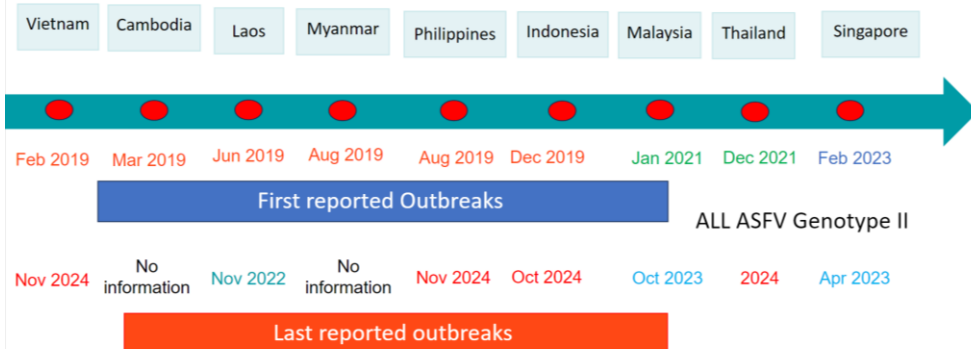
Biosecurity is a key to stop ASF.  
Be a champion farmer and keep your pigs free from ASF!



CABI brochure: <https://openknowledge.fao.org/handle/20.500.14283/cd1150en>

# Poster session

## ASF Outbreaks in ASEAN Member States



World Organisation for Animal Health  
 ASF in wild pigs reported in Malaysia, Indonesia, Laos, Cambodia

### ASF PREVENTION & CONTROL MEASURES

- ❖ **Legislation:** Law on Animal Health and Production, MAFF declaration, Pro# 134 178 227 343, Directive#232 of MAFF, 30 May 2019 on the urgent measures to monitor and control and illegal imported pig and pig production
- ❖ **Control Measure:**
  - ✓ Disease outbreak investigation and surveillance: sample collection, Identify the possible risk areas and factors
  - ✓ Disease outbreak response: Animal Movement Control, Culling, Disposal, Cleaning, public awareness
  - ✓ Animal movement control: Check point for inspection of live animal importation
- ❖ **Capacity building:**
  - ✓ Awareness programme and other technical support
  - ✓ Biosecurity



### CONSTRAINTS & SOLUTIONS

**Main Constraints**

- ✓ No compensation
- ✓ It is a new disease without vaccine
- ✓ Limitation of understanding of farmers in disease control
- ✓ Distribution of infect pig meat within outbreak area and other in the forms of fresh, dried and fermented
- ✓ High number of backyard farm in the country
- ✓ Limitation of implements

**Solutions**

- ✓ Staff capacity building especially on ASF control, prevention and response
- ✓ Strengthens the understanding of pig farms in disease control and biosecurity
- ✓ Improve knowledge on bio security practices in farm level, slaughterhouse and so on...
- ✓ Departmentalization, and
- ✓ all

Are affected pigs still showing classical ASF symptoms?  
 Or are they living with the virus happily?



# Continued Partners presentation

BIG Program  
CIRAD  
AVSF  
ILRI

**Highlights**

1 **BIG website** for dissemination of BIG outputs

ifip Institut du porc

## DEFINITIONS

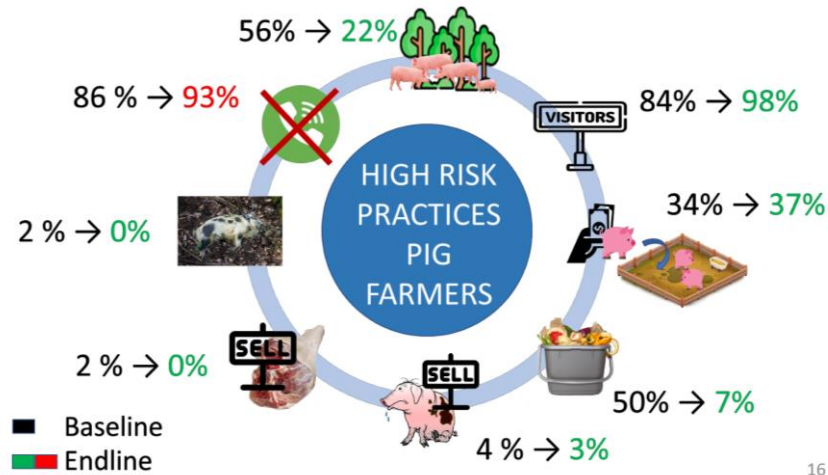
| DEFINITION               | VIETNAM  | WOAH  |
|--------------------------|--|---|
| <b>ADF zone</b>          | A zone for terrestrial animals refers to <b>districts, wards and cities of a province</b> (collectively referred to as district level); <b>provinces and centrally-governed cities</b> (collectively referred to as provincial level), identified as <b>having no cases of diseases registered for disease-free status for a specified period</b> for each disease, each type of animal, and veterinary activities in that zone ensure disease control | A zone within a country in which the <b>absence of a specific infection or infestation in an animal population has been demonstrated</b> . The zone is an area identified by veterinary authorities, including animal populations sharing epidemiological/veterinary characteristics of a specific disease for the purpose of international trade (e.g., import/export of animals and animal products) or disease prevention."  |
| <b>ADF establishment</b> | A terrestrial ADF establishment refers to a <b>livestock farm or a commune, ward, or town</b> (hereinafter referred to as a commune-level livestock facility) identified as <b>having no cases of diseases registered for disease-free status for a specified period</b> for each disease, each type of animal, and veterinary activities at that facility ensure effective disease control  |   |
| <b>Compartment</b>       |  | Means an animal <b>subpopulation</b> contained in one or more <b>establishments</b> , separated from other susceptible populations by a common <b>biosecurity</b> management system, and with a specific <b>animal health status</b> with respect to one or more <b>infections or infestations</b> for which the necessary <b>surveillance, biosecurity</b> and control measures have been applied for the purposes of <b>international trade</b> or disease prevention and control in a country or zone. |

Source: Law on Veterinary Medicine, Vietnam

Source: Chapter 4.5. of the Terrestrial Animal Health Code; Glossary of the Terrestrial Animal Health Code



## Practice changes in Toomlarn



16

## ASF areas of expertise at ILRI

- Development of challenge models for the different ASFV isolates of interest for the research community.
- Development of recombinant live attenuated vaccines (LAV) based on African genotypes.
- Development of subunit vaccines against ASF: antibodies and CTL.
- *In vitro* assessment of immunological parameters.
- Assessing performance of diagnostic test for ASF.



# Southeast Asia Got Talent?

