



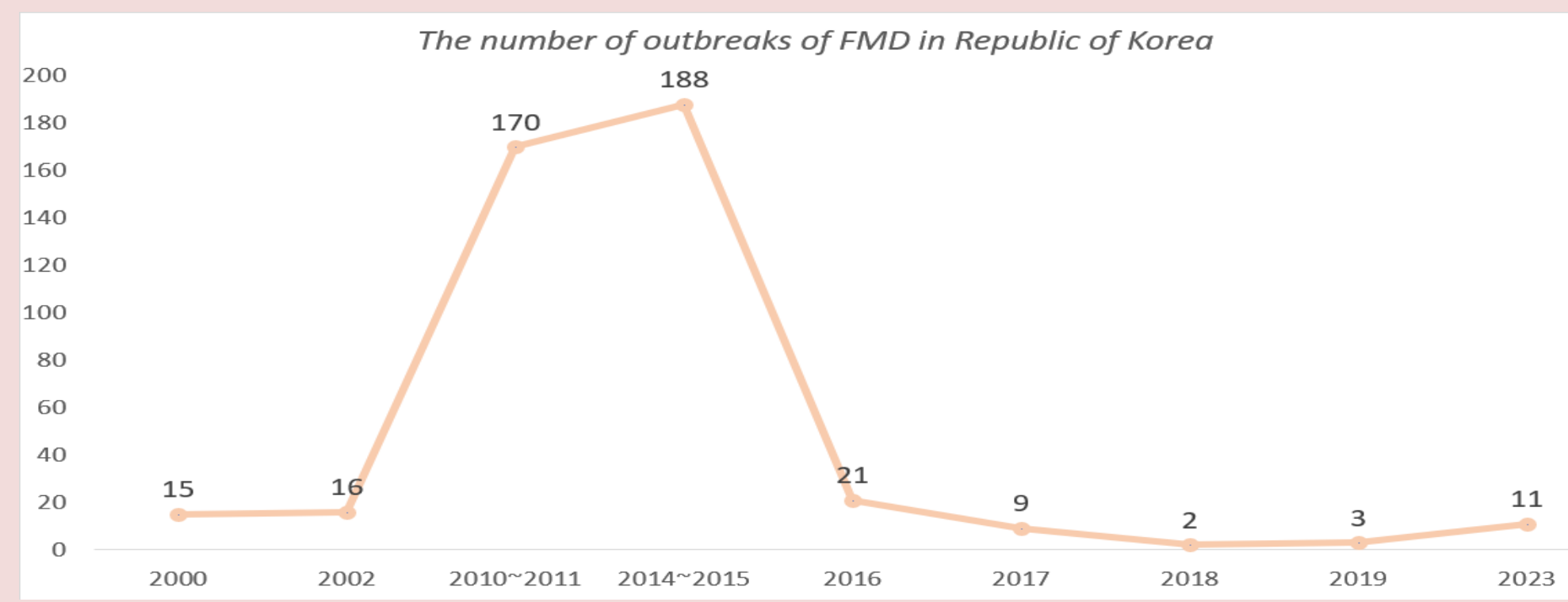
# FMD Situation and Control Measures

## Ministry of Agriculture, Food and Rural Affairs Republic of Korea

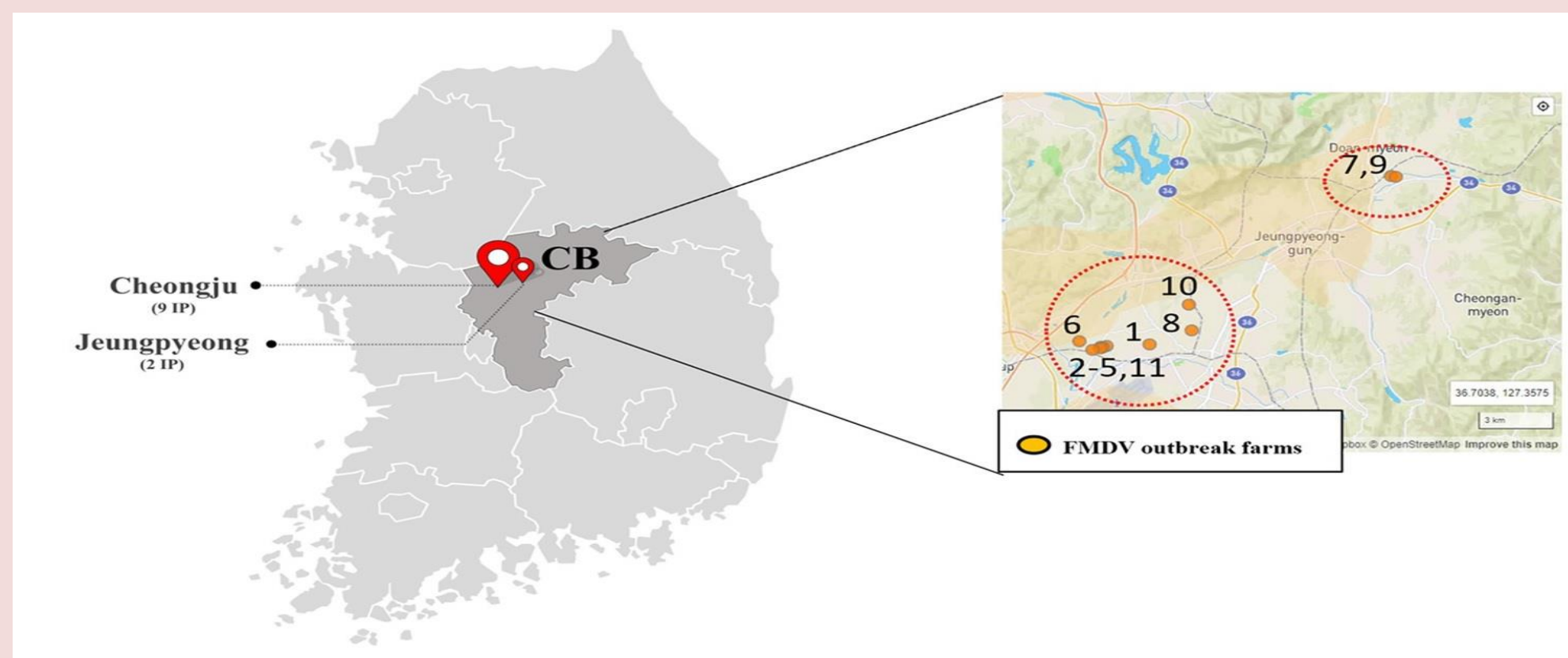


FMD SITUATION

### ◆ No. of Outbreaks

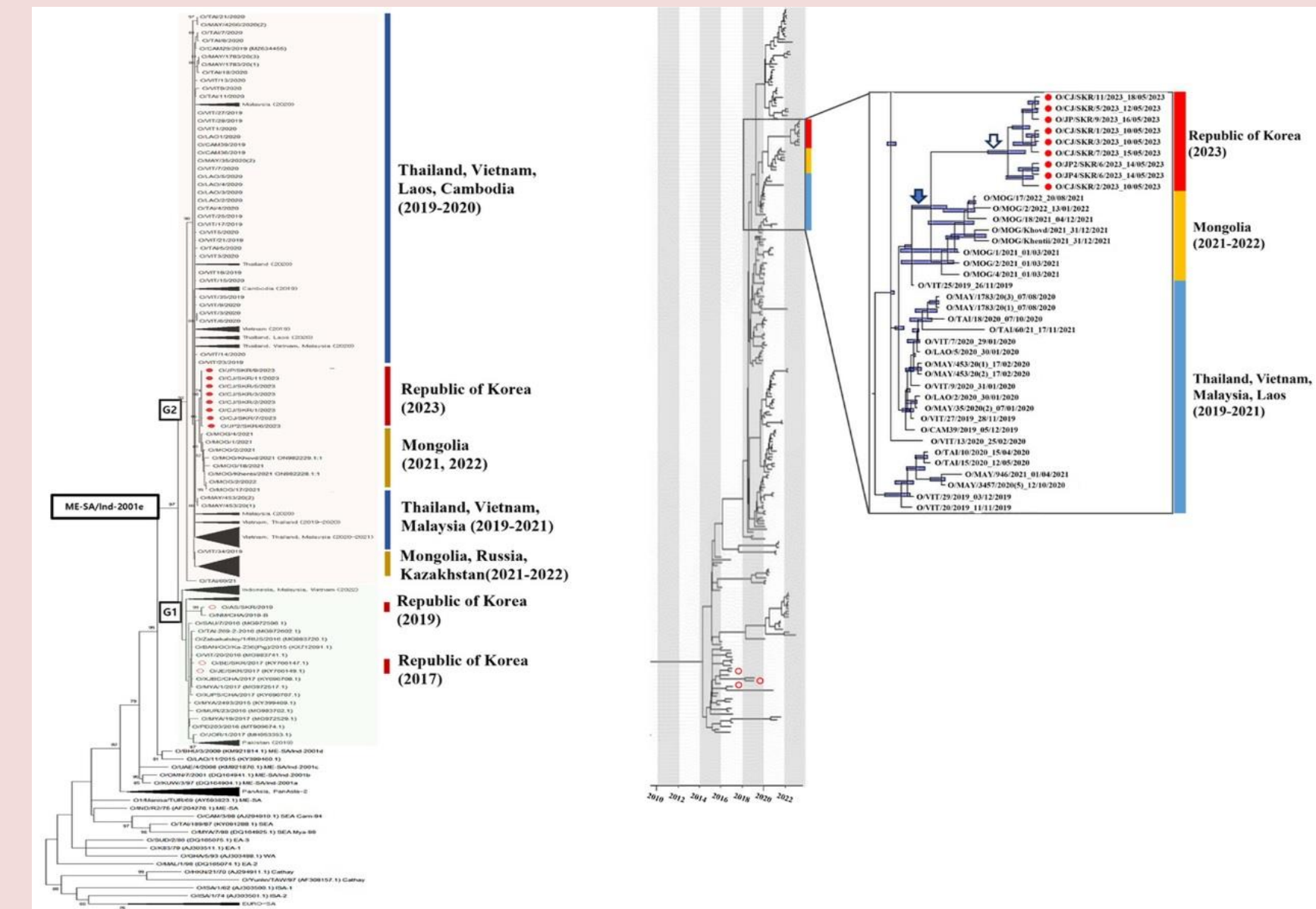


### ◆ Recent outbreaks in 2023 May - 11 farms, 1,571 heads culled



### ◆ Serotype distribution : O/ME-SA/ind-2001e

- Serotype: O
- Topotype: ME-SA
- Lineage: Ind-2001
- Sub-lineage: e



### ◆ Main risk factors

- The recent outbreaks of FMD in neighboring countries have been characterized by an increase in cases where the virus(genotype) has spread from pool to other regions/countries(pool)

### Prevention Activities

- **Vaccination** : Susceptible livestock such as cattle, pigs, goats should be vaccinated under the Act. Each farm must maintain seropositive rate for SP antibody over 80%.
- **Surveillances** : Serological test for SP and NSP antibody is conducted targeting at least 600 thousand animals every year
- **Onsite inspection** : Farms with no purchase records or insufficient purchases of FMD vaccine, compared to the number of animals are regularly inspected
- **Border control** : Animal or livestock products from FMD outbreak countries are prohibited

### Control Measures

- **Stamping out** : All susceptible animals in the first outbreak farm in the county will be culled. In case of additional outbreak in the same county, only antigen positive animals will be culled.
- **Emergency Vaccination** : All susceptible livestock animals in the county or country will be vaccinated.
- **Movement Restriction**
  - Immediately after the FMD outbreak, temporary standstill order is issued on vehicles and workers related to all susceptible livestock
  - A management zone is established encompassing the outbreak farm, consisting of two defined areas: the restricted area (within a 500-meter radius) and the protection area (within a 3-kilometer radius). Movement of susceptible animals is strictly regulated within these designated zones

### Risk of spreading

- **Constraints:** Due to geographical conditions, Farms are located close to each other, making the risk of spread very high
- **Solution:** Rapid FMD response measures including stamping out, movement control, disinfection and emergency vaccination

### Emergency vaccination

- **Constraints:** Emergency vaccination required sufficient amount of vaccines considering the number of livestock in case of a non-vaccinated type of FMD outbreak
- **Solution:** Considering the situation in neighboring country, the antigen bank is operated. In case of emergency, the vaccine is produced using an antigen bank, and it arrives within 6 days.

CONSTRAINTS & SOLUTIONS

FMD PREVENTION & CONTROL MEASURES

