



World Organisation  
for Animal Health  
Founded in 1924

# Country Presentation FMD Situation and SEACFMD Campaign Progress

**Country name: Malaysia**

Name of Presenter: Dr Jamaliah binti Senawi

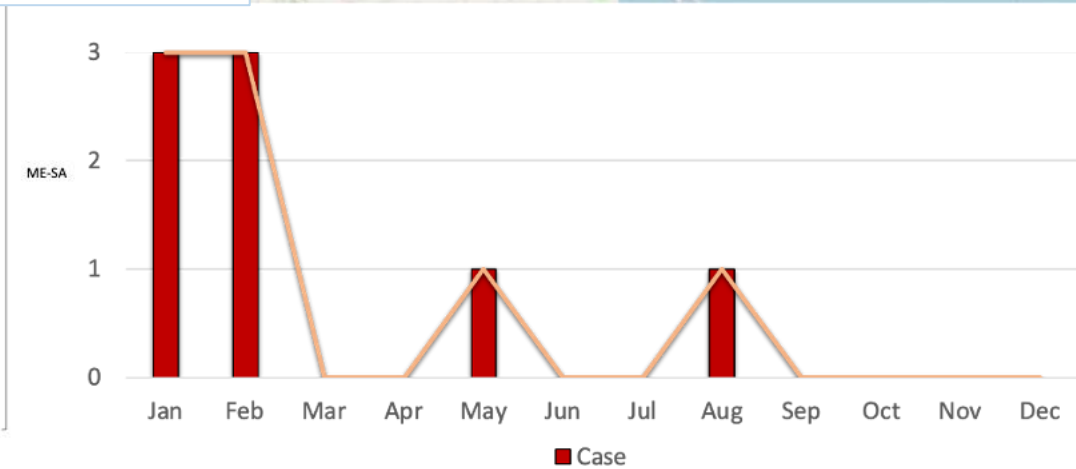
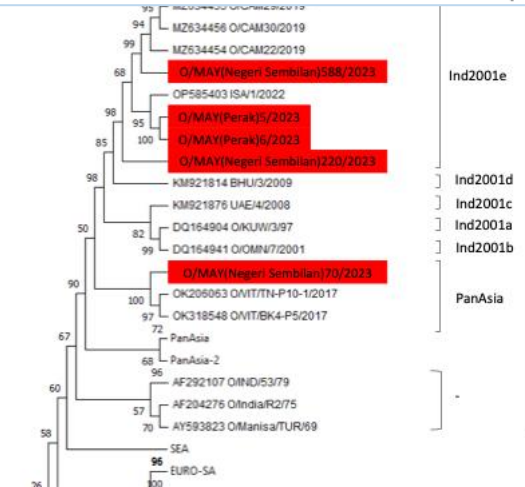
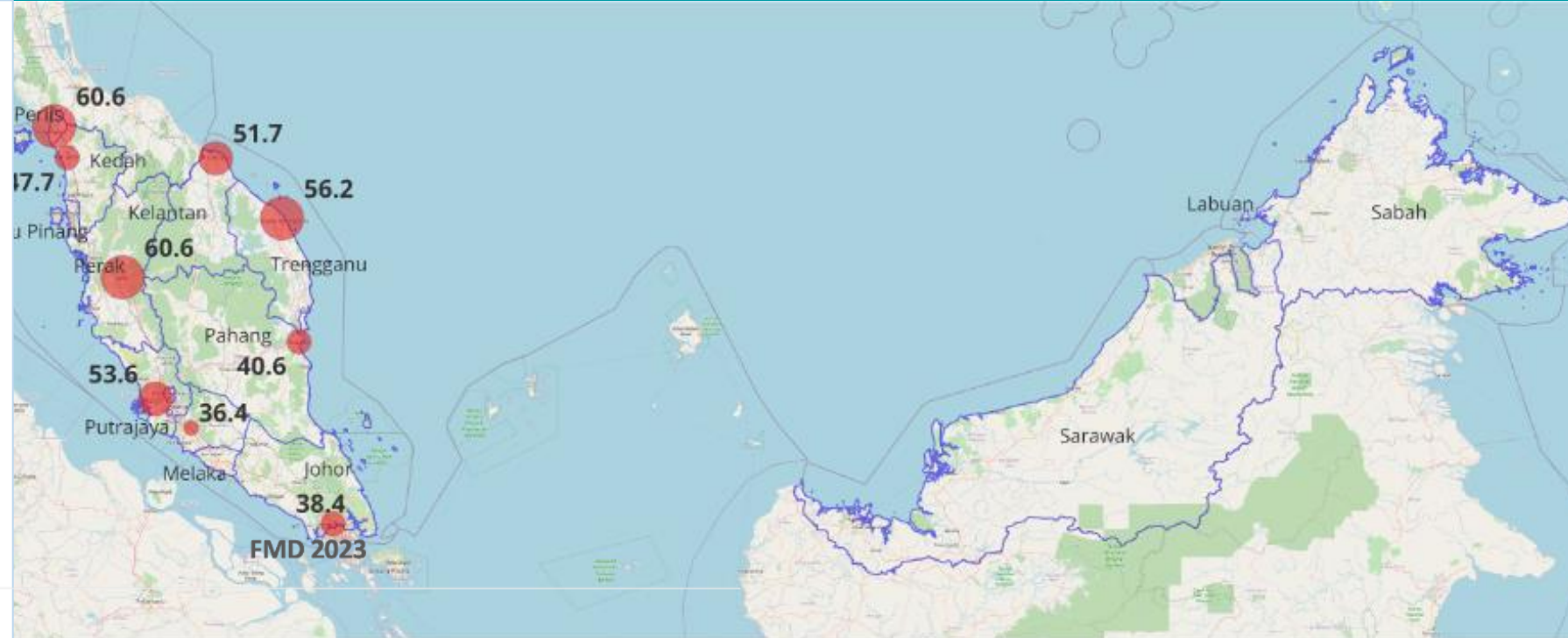
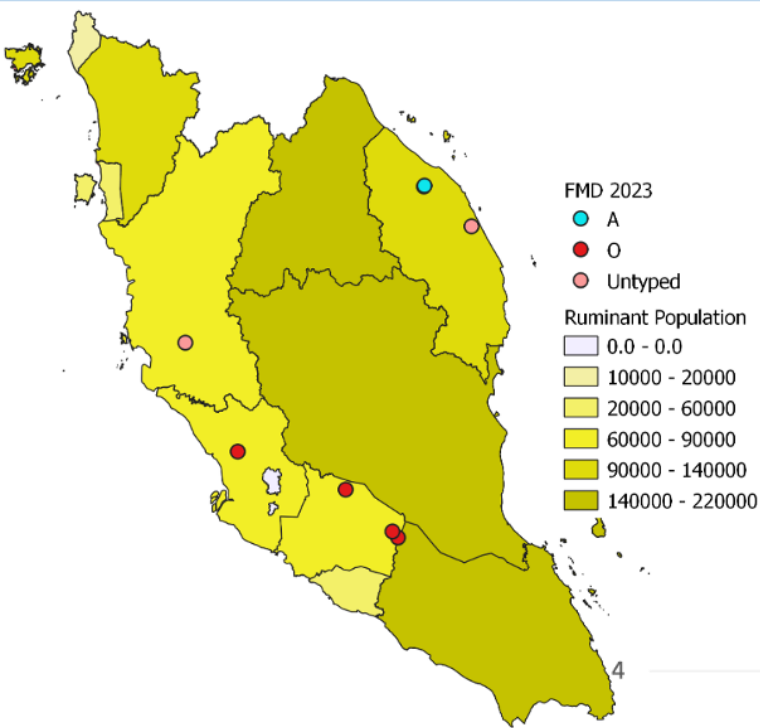
Position: FMD National Coordinator

Affiliation: Department of Veterinary Services



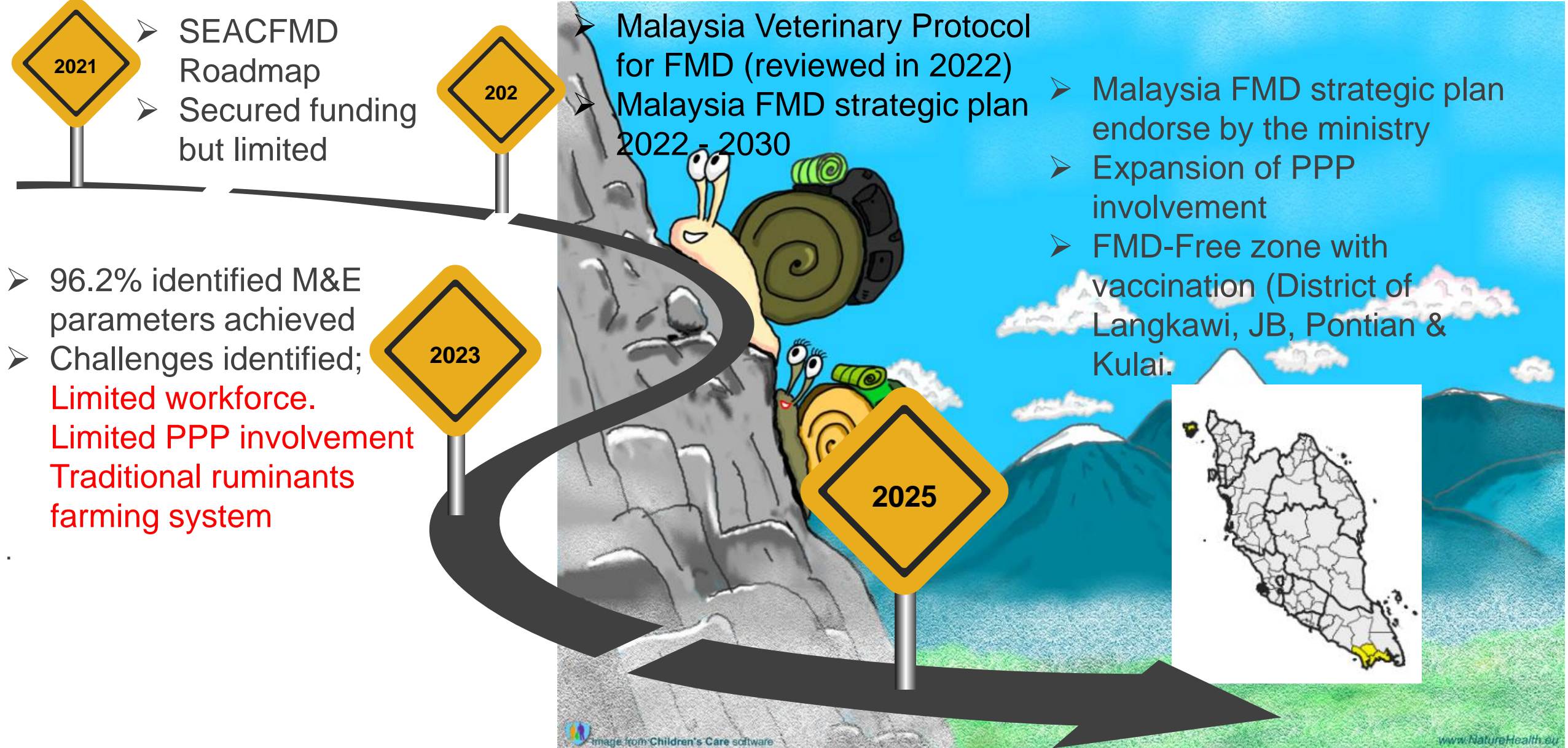
Department of Veterinary  
Services Malaysia (DVS)

# FMD situation in 2023



No. of FMD at local farms	8
No. of FMD at quarantine	2
Species affected	Bovine
No. of animal showing CS	L: 83; Q:38
No. of susceptible affected	L: 2,581; Q:987

# Progress of the implementation of SEACFMD Roadmap 2021 – 2025 based on agreed M&E Indicators



# Progress of your national FMD control based on FMD Progressive Control Pathway Self Assessment Tool

Indicator No.	Component	Category	Topic	PCP-FMD Stage that corresponds to country score			
1	Livestock sector and stakeholders	Livestock population	Epidemiological units				3
2	Livestock sector and stakeholders	Livestock population	Susceptible species			2	
3	Livestock sector and stakeholders	Socio-economics	Value chain description and mapping			2	
4	Livestock sector and stakeholders	Socio-economics	Socio-economic impact		1		
5	Livestock sector and stakeholders	Stakeholders	Stakeholder engagement and compliance		1		
6	Surveillance and diagnostics	Surveillance tools and procedures	Case definition				4
7	Surveillance and diagnostics	Surveillance tools and procedures	Outbreak investigation				4
8	Surveillance and diagnostics	Surveillance tools and procedures	Passive surveillance: reporting			2	
9	Surveillance and diagnostics	Surveillance tools and procedures	Passive surveillance: awareness				4
10	Surveillance and diagnostics	Surveillance tools and procedures	Active surveillance				4
11	Surveillance and diagnostics	Surveillance tools and procedures	Sequencing				4
12	Surveillance and diagnostics	Surveillance tools and procedures	Virology				3
13	Surveillance and diagnostics	Surveillance tools and procedures	Vaccine matching			2	
14	Surveillance and diagnostics	Data management	Collation of data and information				4
15	Surveillance and diagnostics	Data management	Information systems				4
16	Surveillance and diagnostics	Data management	Data analysis			2	
17	Surveillance and diagnostics	Data management	Risk assessment				4
18	Surveillance and diagnostics	Communication	Result dissemination		1		
19	Prevention control and evaluation	Movement controls	Internal animal movements				4
20	Prevention control and evaluation	Movement controls	Animal identification				3
21	Prevention control and evaluation	Movement controls	Official border controls			2	
22	Prevention control and evaluation	Movement controls	Traceability of animal products				4
23	Prevention control and evaluation	Vaccination	Vaccine procurement and delivery				4
24	Prevention control and evaluation	Vaccination	Vaccination coverage				4
25	Prevention control and evaluation	Vaccination	Population immunity/post-vaccination monitoring				4
26	Prevention control and evaluation	Vaccination	Pharmacovigilance (investigation of vaccination failure)				4
27	Prevention control and evaluation	Early warning	Contingency planning				3
28	Prevention control and evaluation	Early warning	Early warning system				4
29	Prevention control and evaluation	Monitoring and Evaluation	Monitoring and Evaluation systems				4
30	Veterinary Services	Coordination	Organizational structure				3
31	Veterinary Services	Legislation	Legislative authority				3
32	Veterinary Services	Professional competency	Manpower and resources			2	
33	Veterinary Services	Professional competency	Regulating FMD vaccines			2	
34	Veterinary Services	Professional competency	Zoning				4
35	Veterinary Services	Professional competency	Budget			2	
36	Veterinary Services	Professional competency	Transparency				3

	PCP Stage	Livestock sector and stakeholders	Surveillance and diagnostics	Prevention control and evaluation	Veterinary Services	OVERALL
% completed	1	100%	100%	109%	100%	103%
	2	60%	92%	109%	100%	94%
	3	20%	69%	100%	57%	69%
	4	0%	62%	82%	14%	50%
Reliability*	●	100% ●	100% ●	100% ●	100% ●	100% ●

\*Reliability is a measure of how many questions were answered. 90%-100% is considered reliable (● green). From 70%-90% is considered medium (● yellow). Less than 70% is considered low reliability (● red).



# Key challenges and recommended solution

## CHALLENGES

- Illegal transboundary movement of animals
- Under-reporting of cases in spite of strong existing legislation
- Human resource constraints for FMD control
- Vaccination compliance

## WAY FORWARD

- Regular and periodic engagement with border control agencies on mitigation & JRA activities
- Strengthening enforcement of legislation
- Strengthening of awareness campaigns (risk communication)
- Expanding PPP to wider approach



Thank You