



World  
Organisation  
for Animal  
Health  
Founded as OIE

Organisation  
mondiale  
de la santé  
animale  
Fondée en tant qu'OIE

Organización  
Mundial  
de Sanidad  
Animal  
Fundada como OIE

Country  
partner logo

Any other  
affiliation /logo



# Emergency Management: emerging themes and the future

Dr Graeme Cooke

CVO,  
Victoria

**Sub-Regional Workshop on Emergency Management  
14 - 16 August 2024 Bangkok, Thailand**



# Presentation covers

**1. Our World**

**2. Themes**

**3. Thoughts now**

**4. Thoughts future**



# Our World



Unofficial



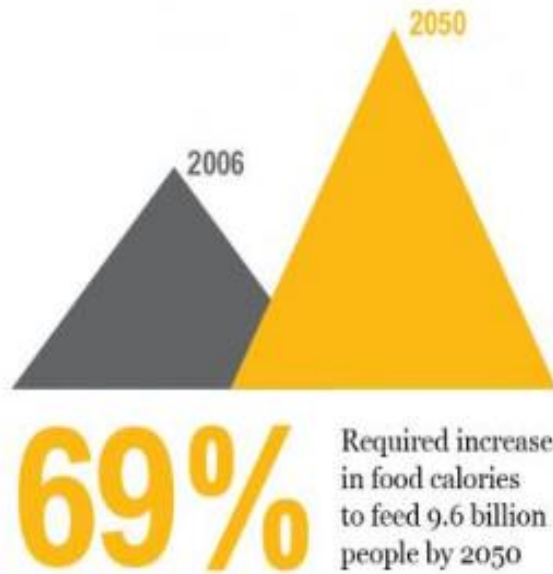
# We live increasingly in a “VUCA” world



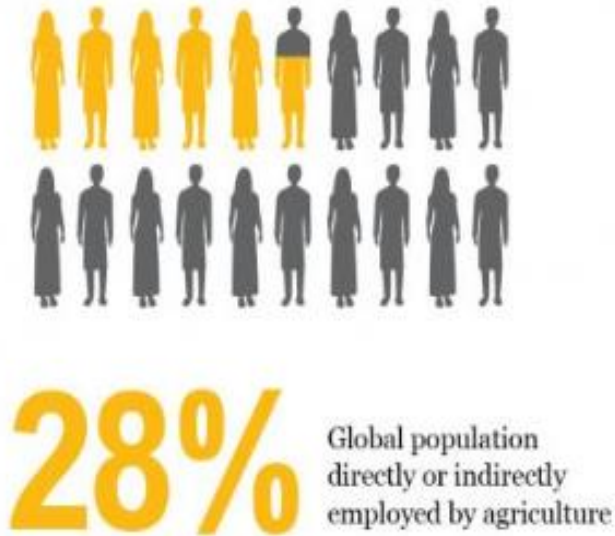


# The great balancing act ahead of us - More food and less greenhouse gases

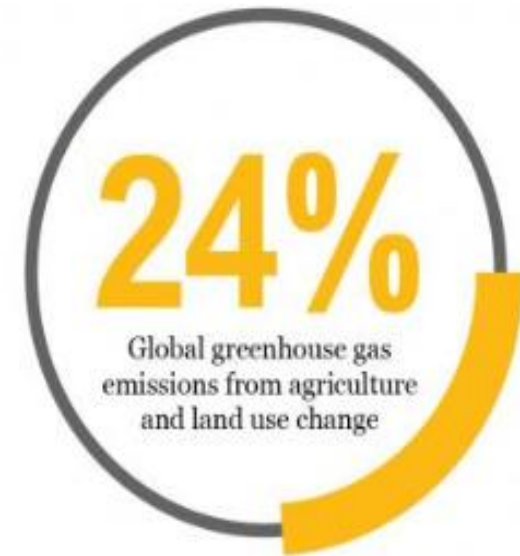
## CLOSING THE FOOD GAP



## SUPPORTING ECONOMIC DEVELOPMENT



## REDUCING ENVIRONMENTAL IMPACT







Unofficial



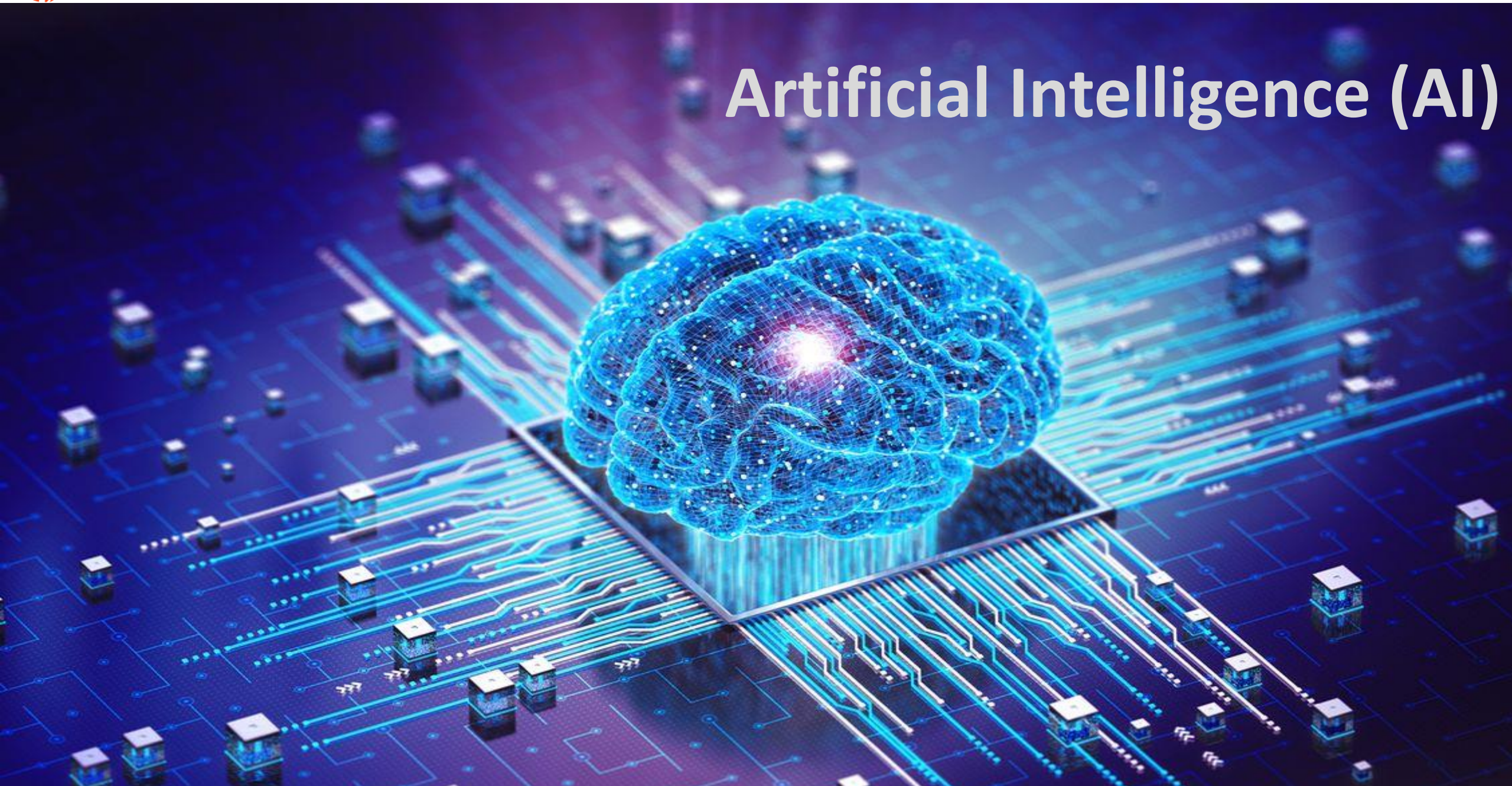
# Antimicrobial Resistance (AMR)







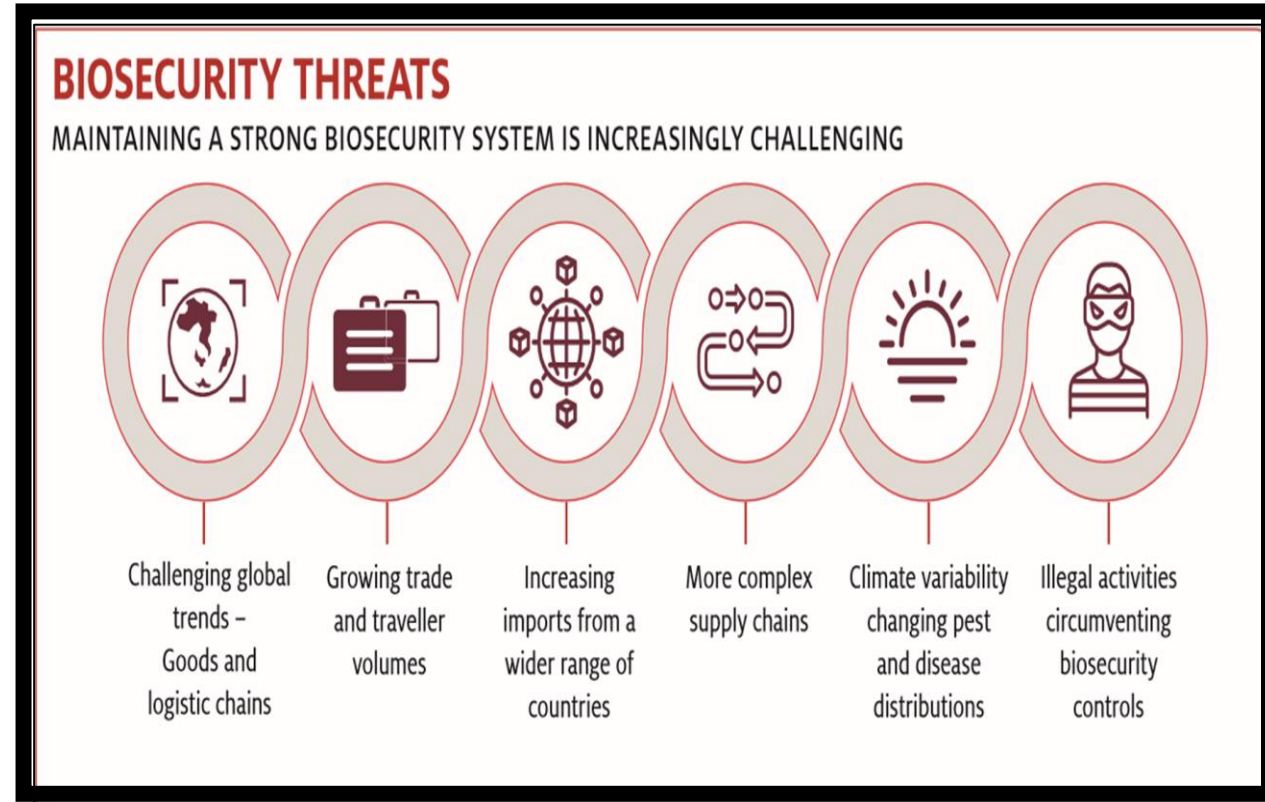
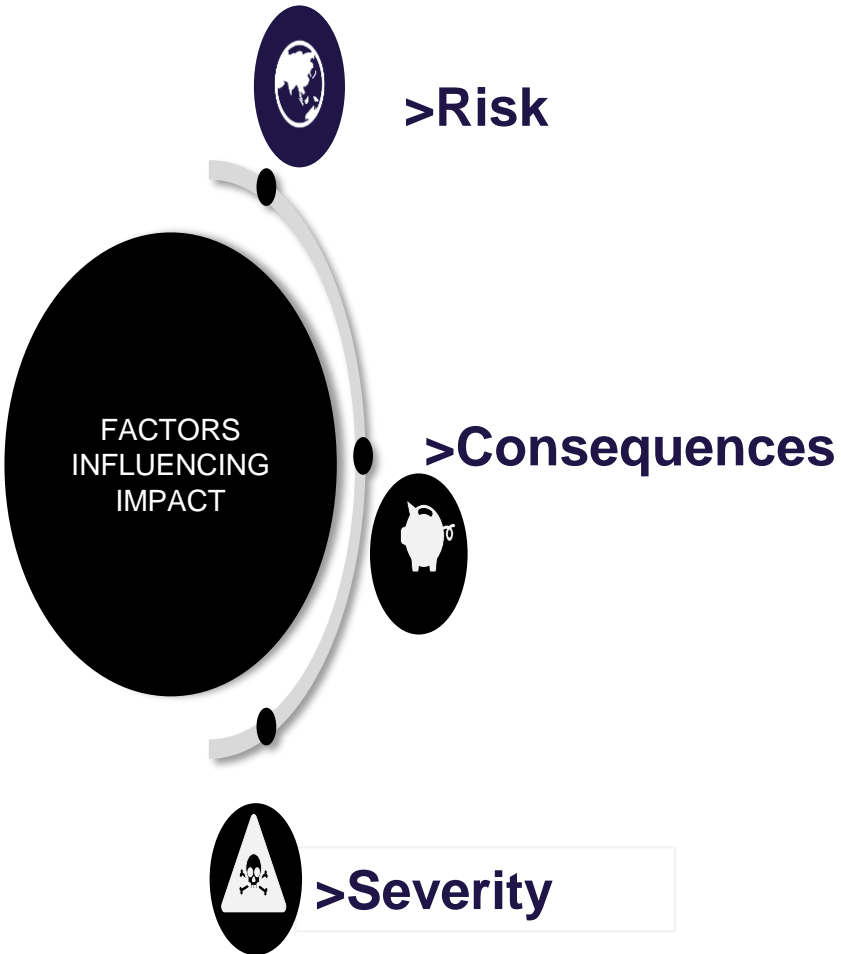
# Artificial Intelligence (AI)







# Biosecurity risks are increasing



African swine fever

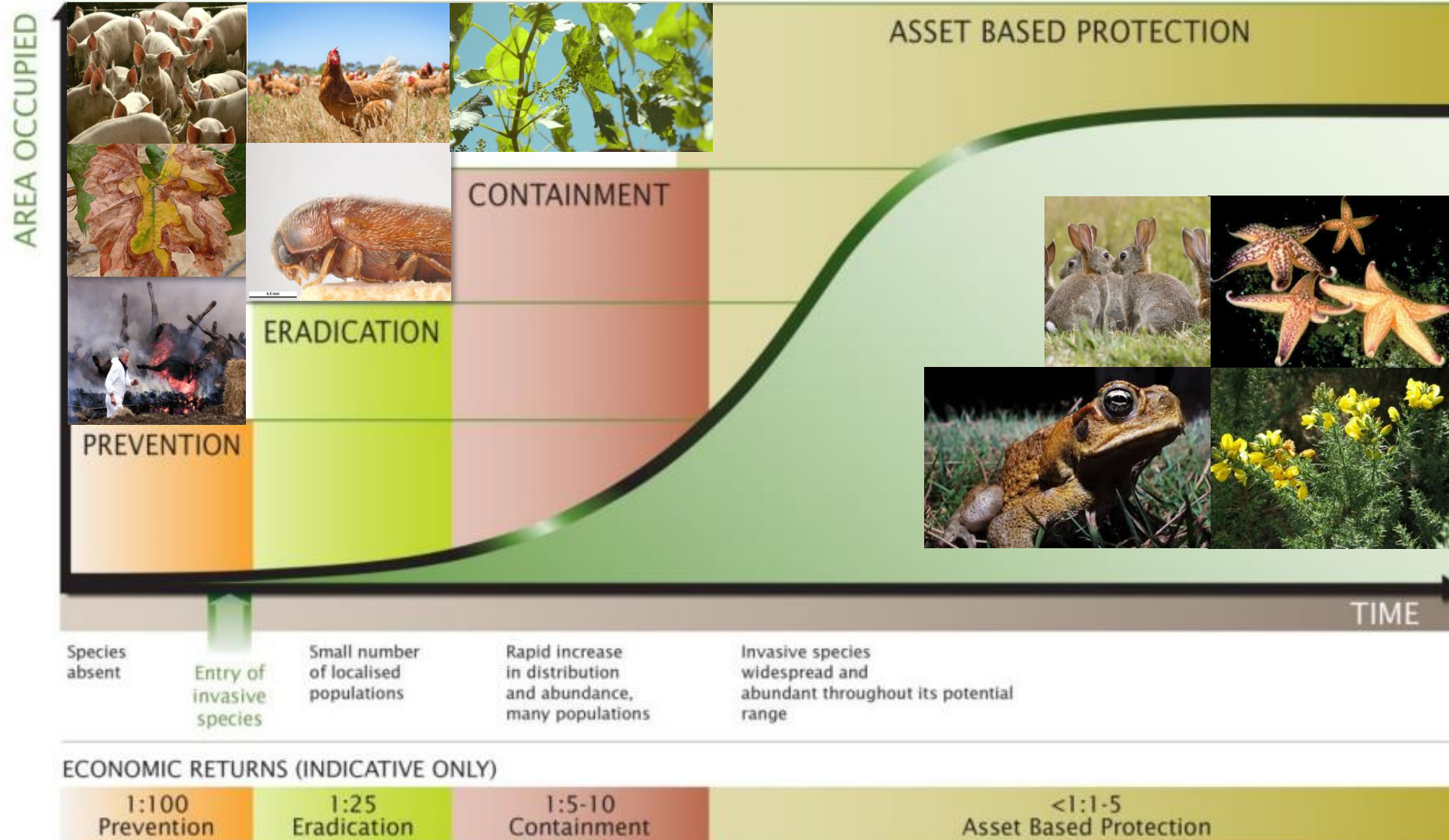
African horse sickness

Lumpy skin disease

Foot and mouth disease

# GENERALISED INVASION CURVE SHOWING ACTIONS APPROPRIATE TO EACH STAGE

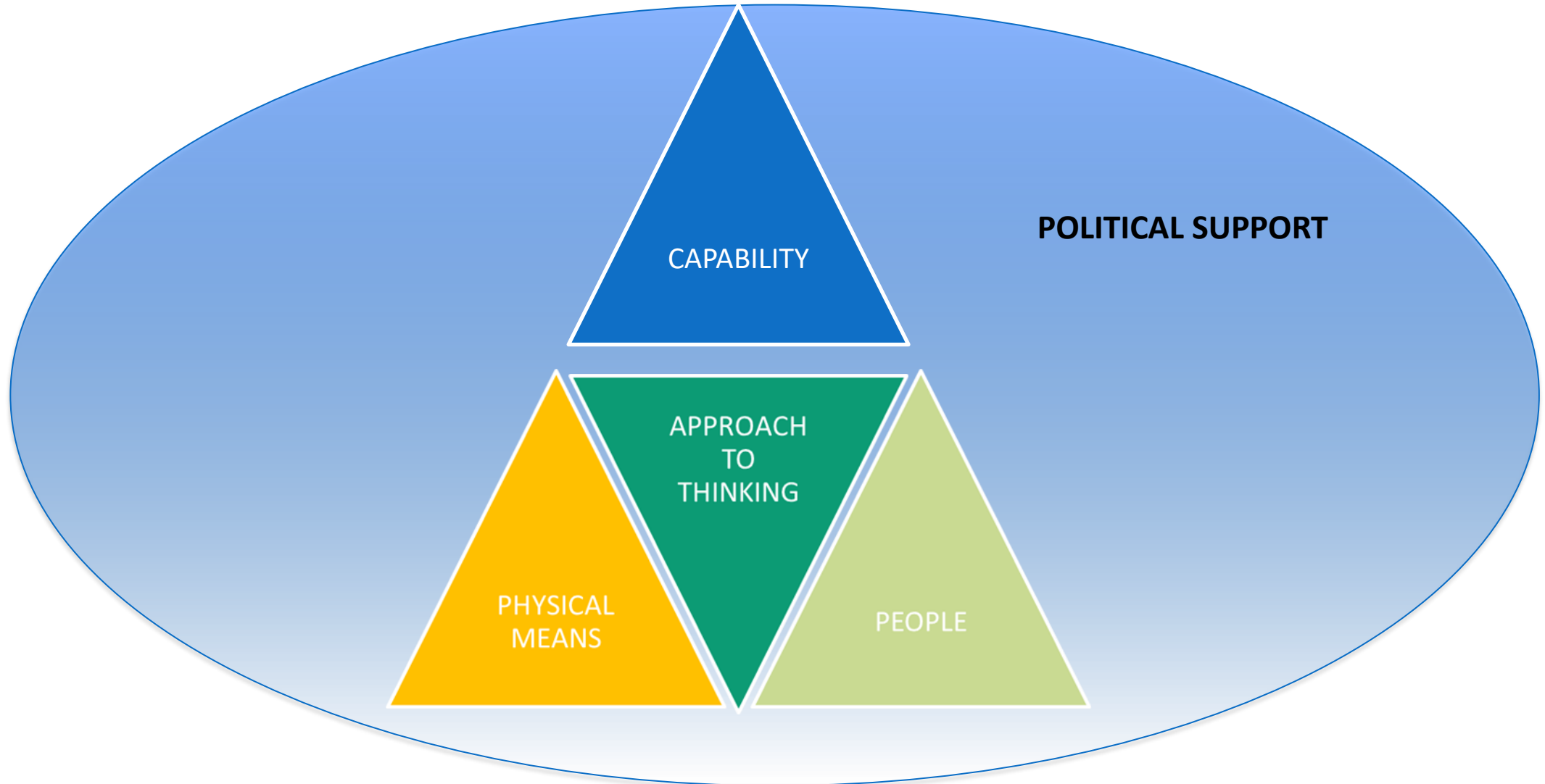
Version 2.0: 24 JUL 2013







# The principles and components of any Emergency management capability





# WOAH Emergency Management Preparedness

WOAH  
Emergency Mgt  
CHAPTER

WOAH Emergency  
Mgt GUIDANCE

EPR TOOL PILOT





# THEMES





# Themes

- Finances and Resourcing
- EXERCISES and simulations
- Communication
- Hardware and Physical means
- Plans
- Collaboration
  - - Agencies
  - - Countries
- Training
- Systems
  - Legal
  - Hardware
  - Software
  - Design and use



# Finances and Resourcing

- Cycle of Biosecurity budgeting – it is a big problem of having constant commitment and budget
- Make it clear what you get for the finance – and what not
  - What is the Minimal and what Scenarios can need
- Contingency planning must be a dedicated area that needs attention and not just a plan that sits there
  - Resources in place
  - Resources surge coordination
- Temporary hire (contractors) versus fulltime
- Know your stock of consumables and PPE and how to get more
- What Infrastructure is needed



# EXERCISES and Simulations

- If you find Hope is part of your plan – you need to plan better!
- Find the time – make them happen
- Important EXERCISES can be done in small chunks
  - Desktop –Drill – Functional - full scale
- Make them simple
- Multi-agency builds relationships and support. Promote One Health
- Ask the questions – who will do what needs to be done ?
- Identify – Assess – Practice – Improve
- Make sure the lessons..... are indeed learned !
- EXERCISES can change your whole perspective





# Communications

- Communications never been more direct or easy
- Misinformation never been so easy!
- Vital to start communications early – seize the initiative
- Same message – Single source of truth
- Find allies and 3<sup>rd</sup> party support
- Promote awareness, biosecurity and reporting
- Communicate Internally – up and down
- Risk Communication is key
- Media Training and practice
- Serve a Truth Sandwich if needed !



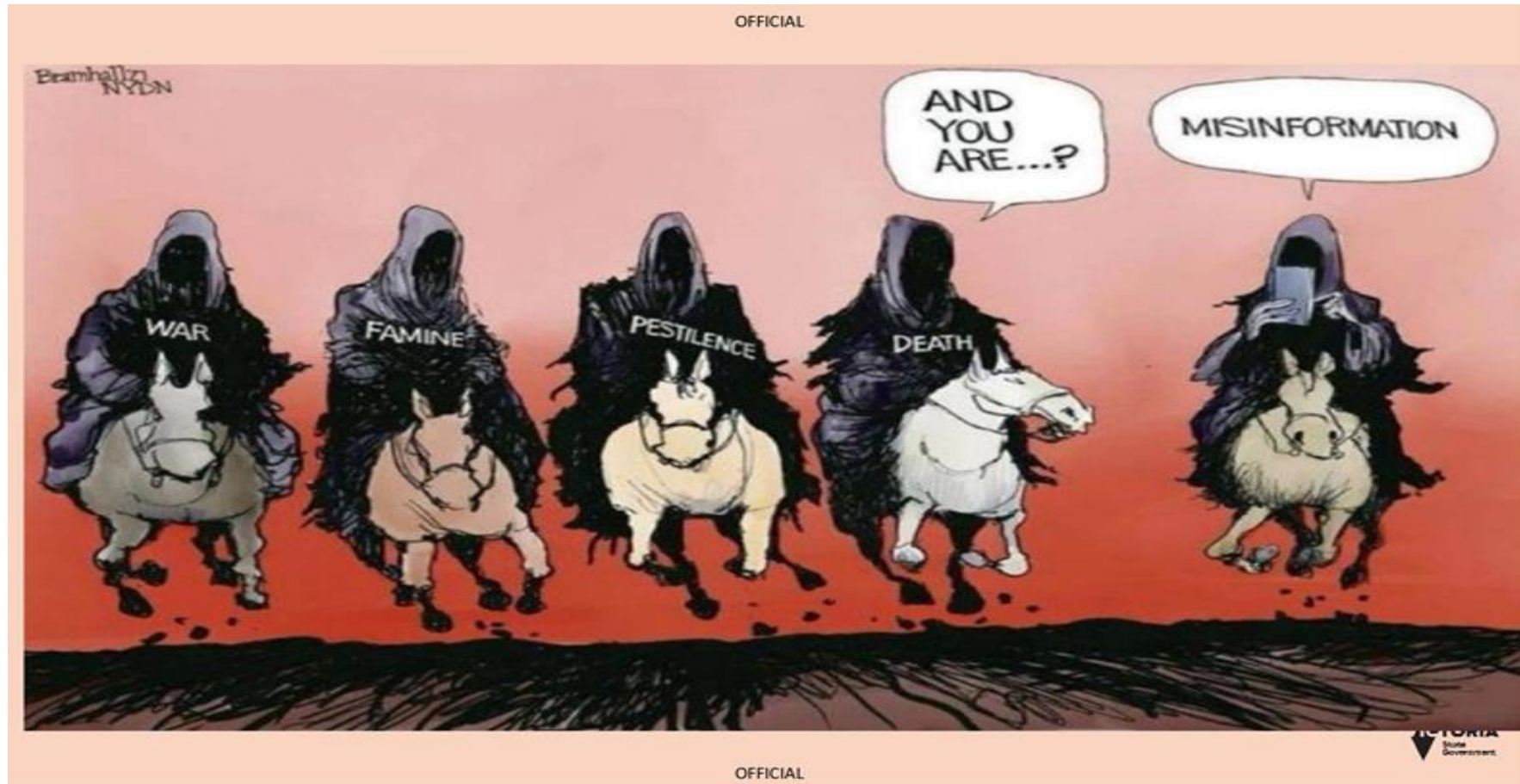
ALL ABOARD THE INTERNET







# MODERN COMMUNICATIONS – FRIEND AND FOE



Unofficial



# 'We would rather die than let them kill our flock'

Sandra Barwick finds that Britain's sheep farmers are opposed to the Government policy of mass slaughter

**B**RIAN and Josephine, Wheatley, tenant farmers in Cumbria with 1,200 ewes, said yesterday they would rather die than see their healthy ewes slaughtered.

"We will not accept it," said Mr Wheatley. "We will do our best to fight them at the farm gates if we have to. I would rather be dead than come back to an empty farm."

"They would have to build new jails to put farmers in. They would have to bring troops in to deal with us, not the animals, if they want to carry it out. That's what everyone is saying."

The Wheatleys, who farm at Inglewood, near Penrith, have built up their herd over 20 years from only 50 ewes. Sheep are their only asset

kill the healthy sheep unless they get their act together."

They have 200 lambs at the moment and, in another three weeks, lambing will start in earnest, with possibly 2,000 more to come. They will be in the fields up to 20 hours every day because they cannot move the ewes into the shed. This lambing represents their income for the next 12 months.

Compensation is not the issue but it is also true that, if their stock is slaughtered, it will be six months before they can restock and 18 months before they have any income. They could not survive for that period.

The Wheatleys believe that the effect of the slaughter will make sheep prices rise by up to three times



Picture: JAMES FRASER





## Hardware and Physical means

- Lab technology needs staff that does not get burned out
- High throughput and robotics
- IT systems that collate information rapidly
- Means of transport for staff
- Means of transport for samples (dedicated collection system)
- Ability to set up Local Coordination Centres that make staff efficient
- It is not just about expensive kit – it is about the people



# Mobile Control Centre (Mark 1)







## Mobile Control Centre (Mark 2)



Unofficial



# Plans

- Have a plan !
- Test the plan !
- Know how to actually deliver the plan !
- Confirm who and what will deliver the plan !
- Be prepared to change the plan !
- Have a “Battle Rhythm “to push through uncertainty and make decisions
- Have a simple agenda as part of every meeting
- Destruction, Disposal and Disinfection needs planning
  
- *“Plans are for Amateurs – Professionals do logistics !” Omar Bradley*





# OODA Loop Thinking

- Observe, Orientate, Decide, Act - Repeat





# Collaboration

- Doing the right thing does not stop you having to explain
- SOPs and Website information makes it easier
- You need levels of collaboration i.e. input from the field, other agencies
- Do not be vet fixated - many others contribute
- People collaborate better if they are listened to
- Making quick decisions wins friends
- Lack of cooperation is not personal – talk to them
- Relationships allow action – Trust allows speed – whether a person or a state



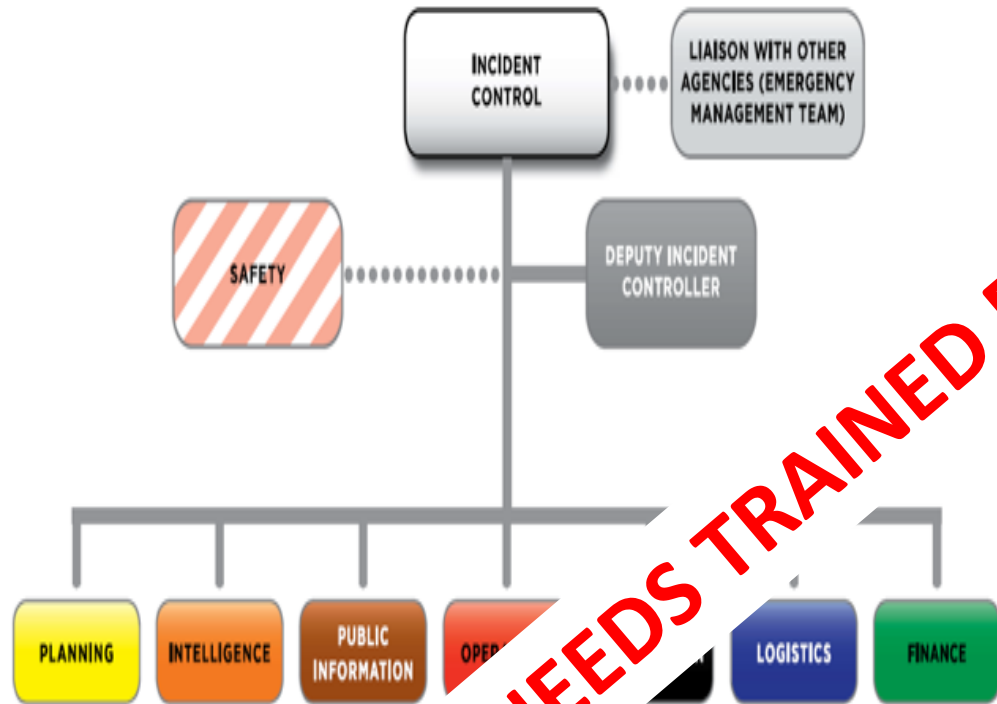
# Training

- Training multiples the size of the team you have
  - For Government Veterinary Services
  - For Industry stakeholders
  - For Private Vets, farmers and other stakeholders
- Lots of opportunities GEMP, SEAFMD, EUFMD, WOAH
- EXERCISES and Simulation Exercises are good training
- Make career pathways on the Emergency Mgt side
- Remember veterinary paraprofessionals or Village Workers
- Beware of over training





# Emergency Management structures



**NEEDS TRAINED PEOPLE WHO THINK!**





# Systems

- Legal
  - Compliance and enforcement
  - Balance legal with education
  - Enforce
  - Suitable Policy
- Hardware
  - IT that enables
  - Digital movements systems
  - Traceability tech never more available
- Software
  - The right data input that helps make decisions
  - Modelling
  - Farm registration



## Future Themes

- Increasing use of WGS use as part of understanding Epi
- Need to find a way to use rapid Point of Care tests ('penside diagnosis')
- Increasing use of online training and EXERCISES
- How to find a role for artificial intelligence
- Increasing size of farms
- Staff demographic changes





## Future Themes

- Increasing centralisation in food chains i.e. large processors
- Meeting increasing data protection needs
- Border controls tech – drones, animal recognition etc
- Permitting system for business continuity – that is in use every day?
- Increasing level of Vector borne disease
- Traceability technology



**Thank you**

**Sub-Regional Workshop on Emergency Management  
14 - 16 August 2024 Bangkok, Thailand**