



World Organisation  
for Animal Health  
Founded in 1924



15<sup>th</sup> Meeting of the Upper Mekong Working Group  
on Foot and Mouth Disease Zoning and Animal  
Movement Management

**Update on SEACFMD  
activities and Regional FMD  
situation**



***Bolortuya, P  
WOAH SRR SEA***

***24-26 April 2024,  
Luang Namtha, Lao PDR***



# Outline



Update on SEACFMD activities



Update on Regional FMD situation

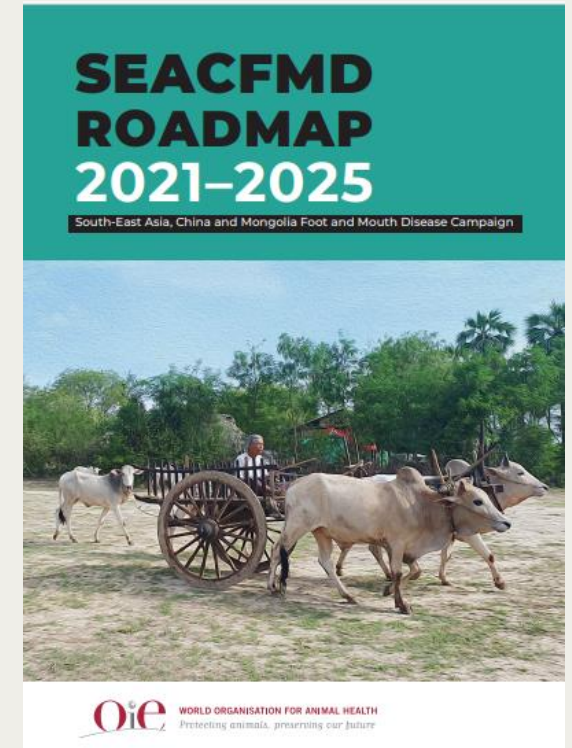
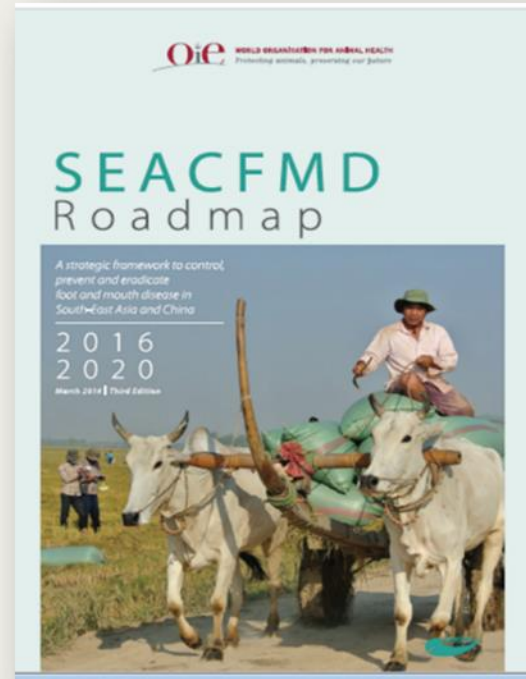
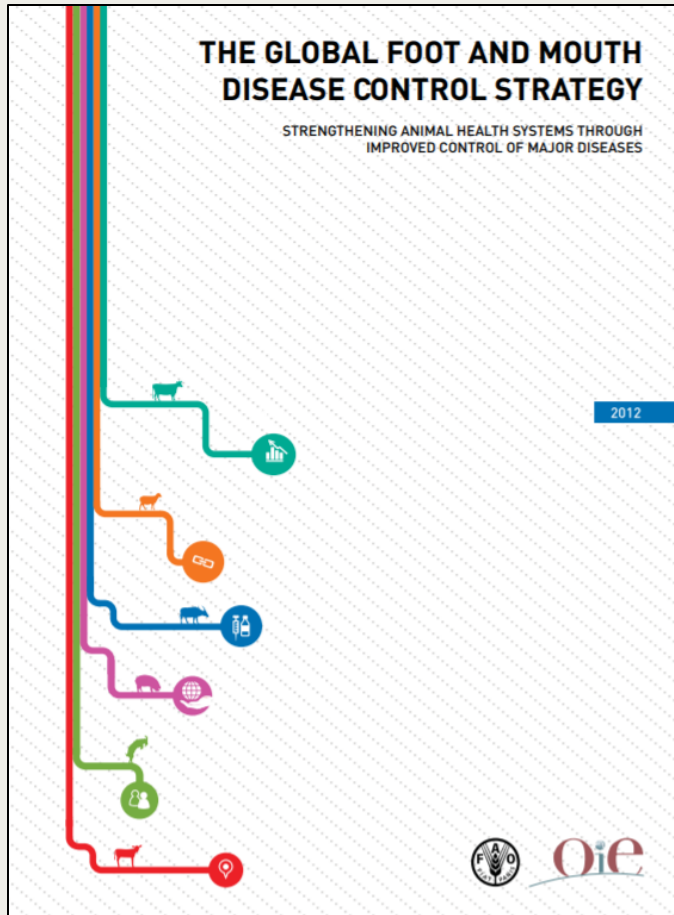


SEACFMD Activities  
relevant to UMWG initiative



# SEACFMD campaign

2021 - 2025



**Risk-based approach to FMD control**



# FMD prevention and control activities

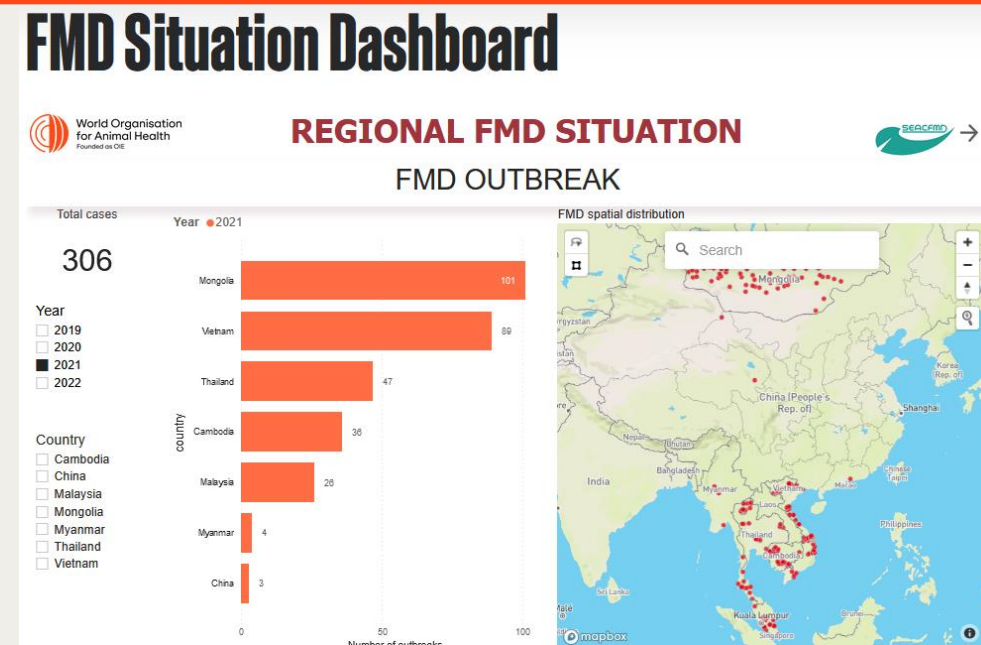
Regional Study on Animal Price Monitoring

Conducted in depth FMD risk assessment in Johor and Langkawi, Malaysia

Study to identify status of Asia 1 in SEA and assess the detection probability of FMDV Asia 1 in SEACFMD region

Animal Price Monitoring Pilot Study in Thailand  
- Identify FMD driver – animal movement linked with price and cultural changes

SEACFMD Portal and FMD Situation Dashboard



Routine activities – Publication of Annual SEACFMD Bulletins, application of WOAH standards etc.

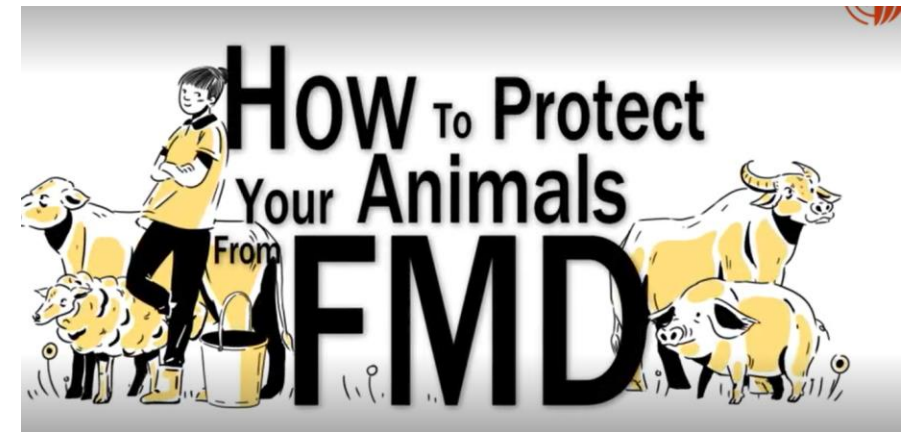
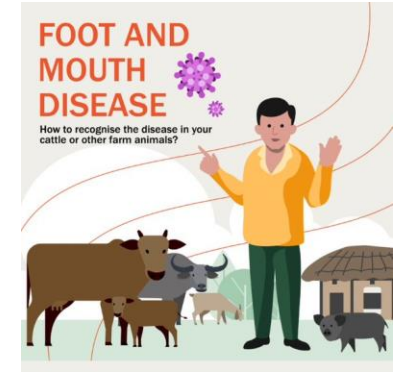
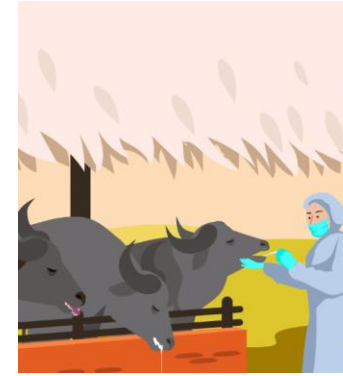
<https://rr-asia.woah.org/en/our-mission/our-mission-regional-strategies/the-south-east-asia-and-china-foot-and-mouth-disease-seacfmd-campaign/>

Aligned National FMD control Plan with the SEACFMD Roadmap 2021-2025

Capacity building Pak Chong FMD diagnostic laboratory

Socio-economic study in Laos and Myanmar to better understand farmers' and CAHWs reluctance and incentives in FMD reporting

Capacity building programs/ Training – ToT on outbreak investigation, GIS, study design, simulation modelling



Digitization of SEACFMD  
Communication Materials



# SEACFMD Governance Meetings



Virtual 26<sup>th</sup> Sub-Commission Meeting  
(16 – 18 March 2022)

SEACFMD Steering Committee meeting  
February 2022/ September 2022

Special Meeting of the National Coordinators focused on  
FMD Preparedness and Response  
(9 June 2022)

25<sup>th</sup> National Coordinators Meeting  
Bali, Indonesia (3 – 5 October 2022)

26<sup>th</sup> National Coordinators Meeting  
Kuala Lumpur, Malaysia (22-24 August 2022)

SEACFMFD LabNet Work Meeting  
Lanzhou, China  
(24-25 October 2023)

27<sup>th</sup> SEACFMD Sub Commission Meeting  
back-to-back with National Coordinators Meeting  
Thailand (September 2024)

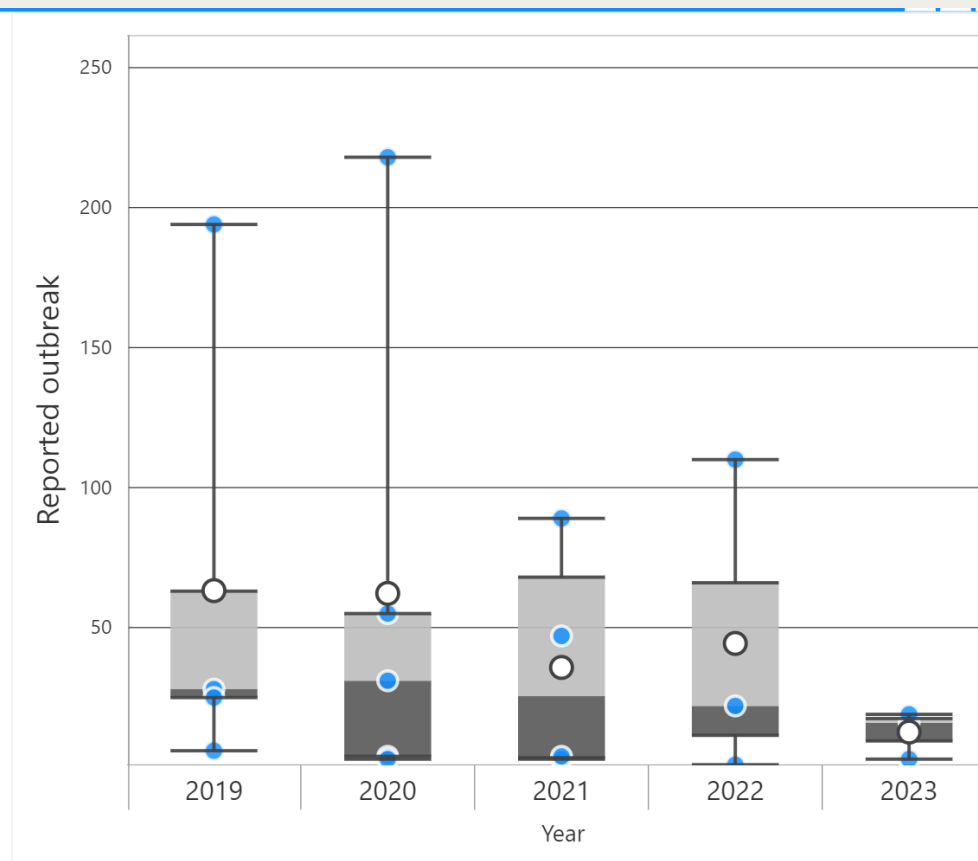
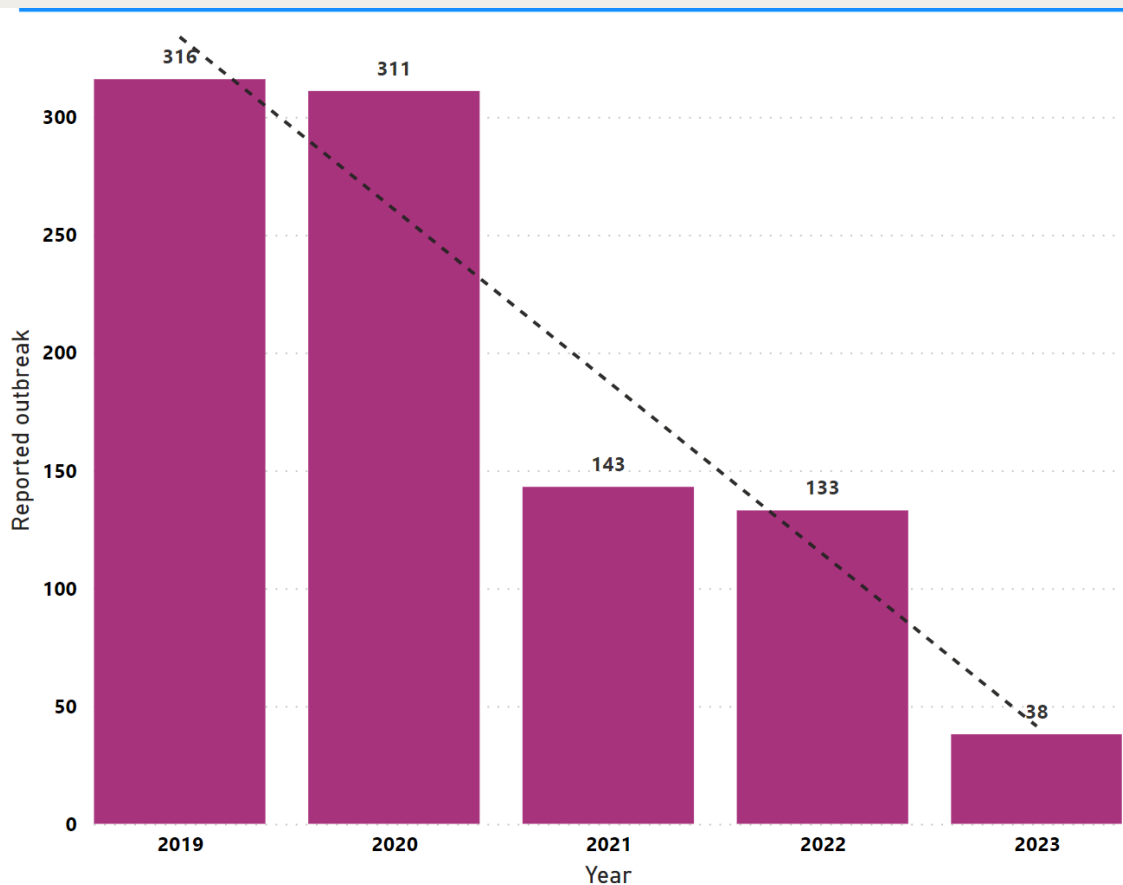


# FMD SITUATION IN UPPER MEKONG REGION





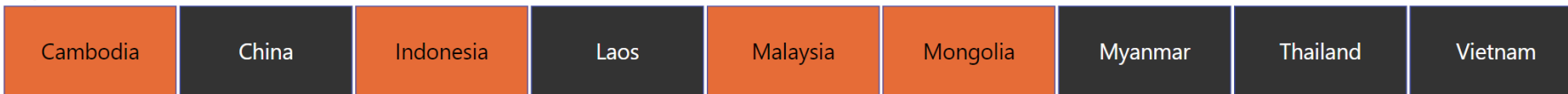
# FMD SITUATION DASHBOARD



Total cases

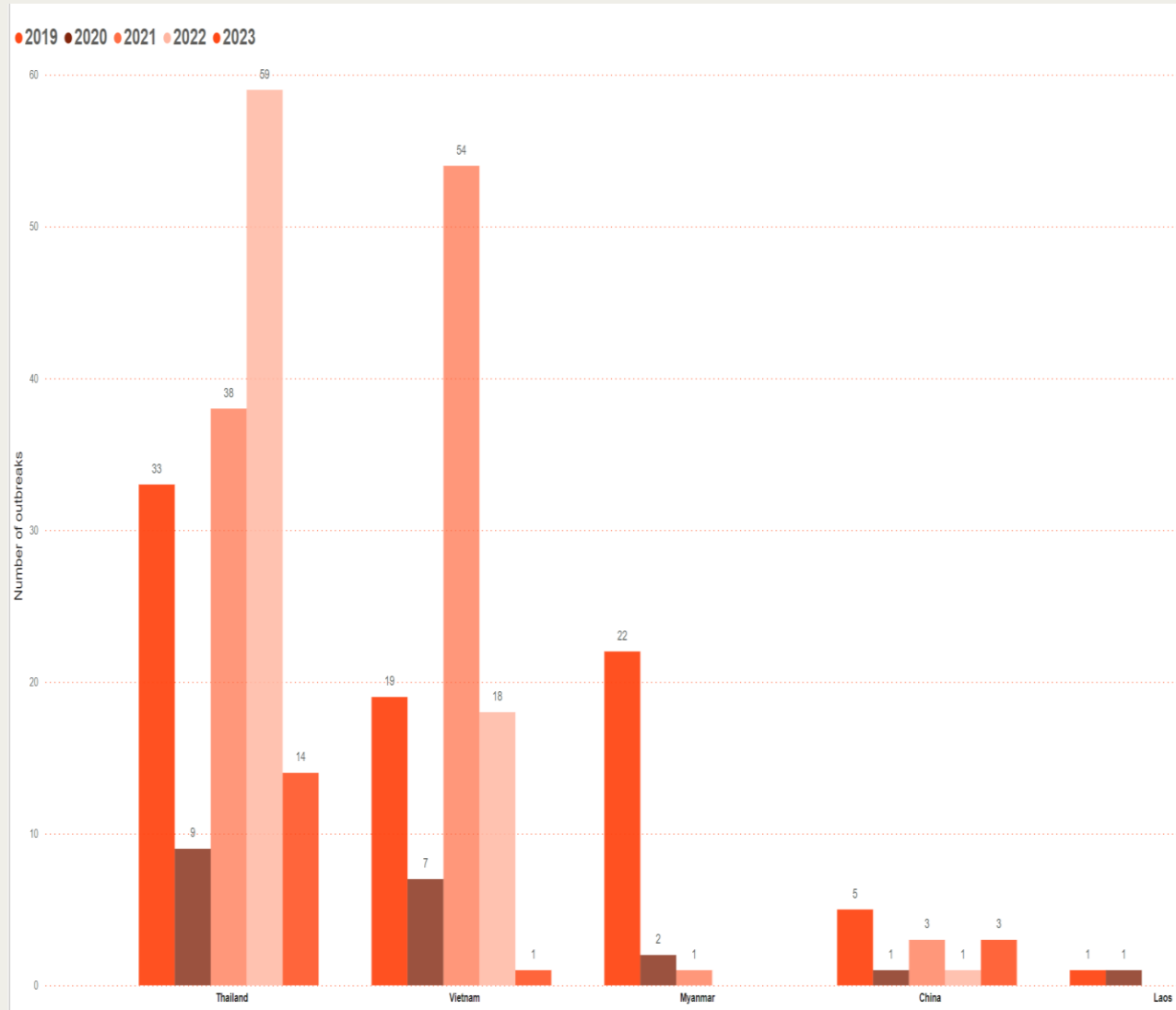
941

Country





# FMD SITUATION DASHBOARD





# FMD TEMPORAL DISTRIBUTION



↑ ↓ ↕ ↗ ↘ ⌵ ⌶ ⋮

Year ● 2019 ● 2020 ● 2021 ● 2022 ● 2023

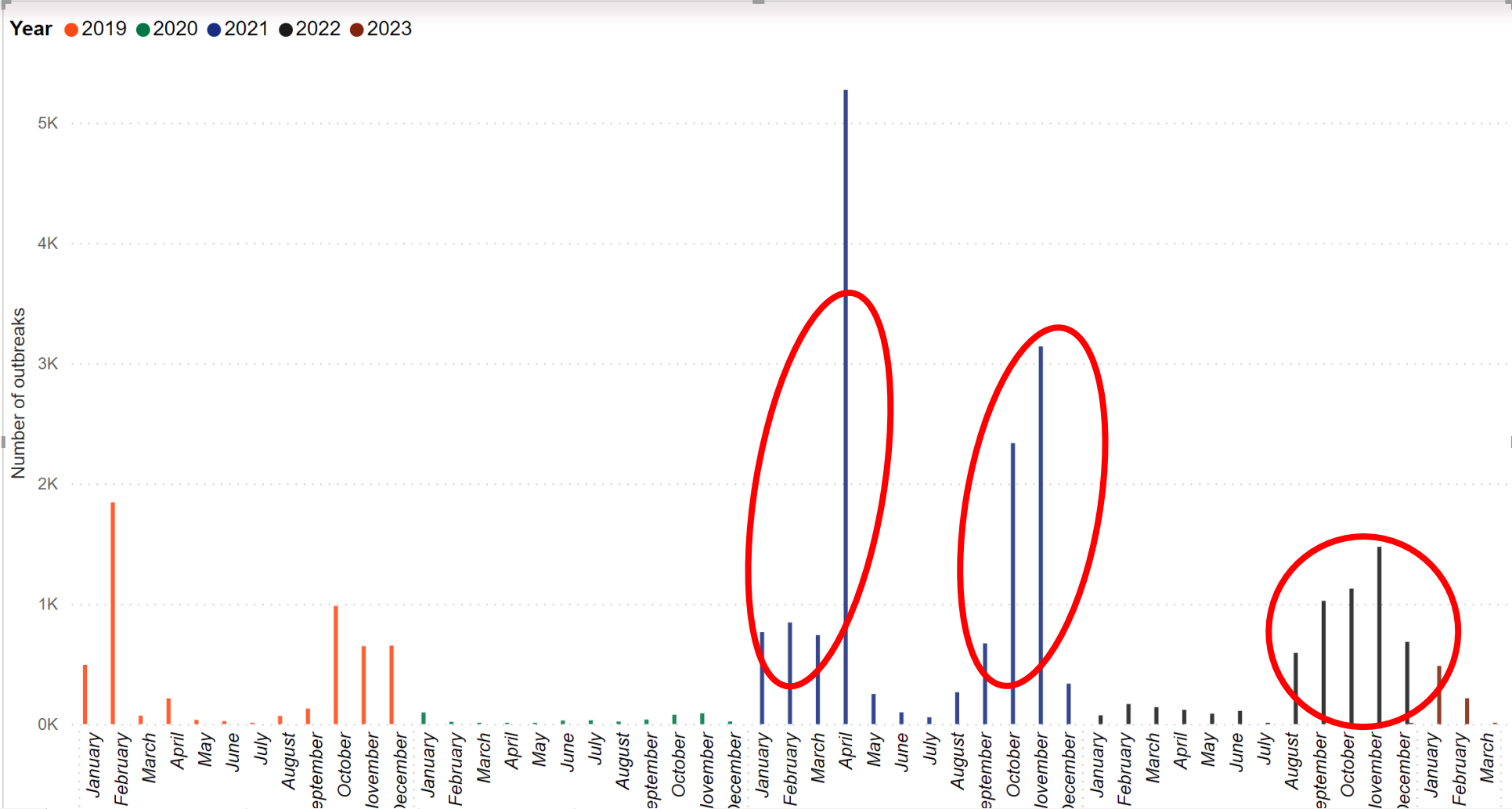
Number of outbreaks

Year

- 2019
- 2020
- 2021
- 2022
- 2023

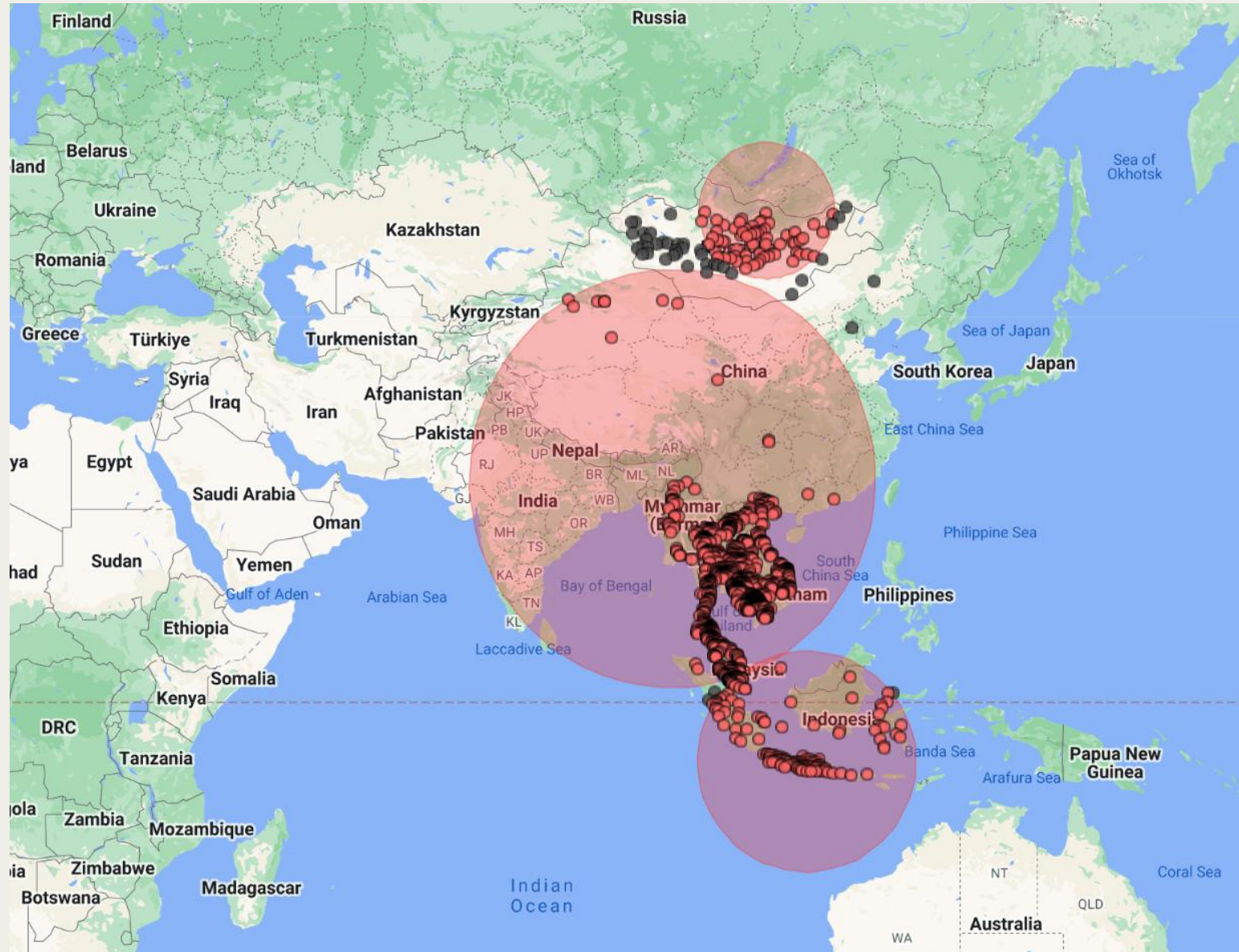
January  
February  
March  
April  
May  
June  
July  
August  
September  
October  
November  
December  
January  
February  
March  
April  
May  
June  
July  
August  
September  
October  
November  
December  
January  
February  
March  
April  
May  
June  
July  
August  
September  
October  
November  
December  
January  
February  
March

5K  
4K  
3K  
2K  
1K  
0K





# SEACFMD Cluster analysis (2019-2023)

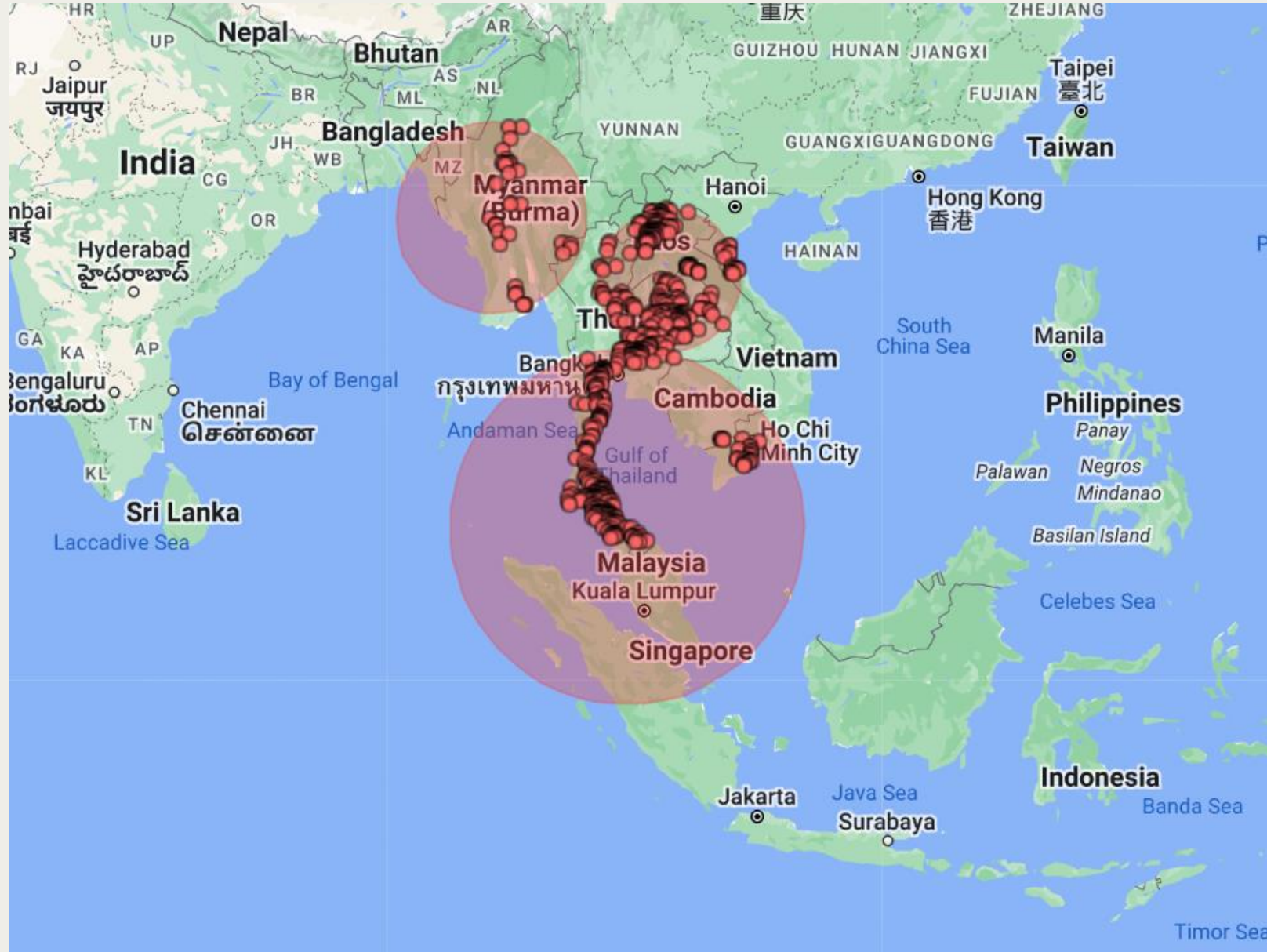


SEACFMD Member countries:

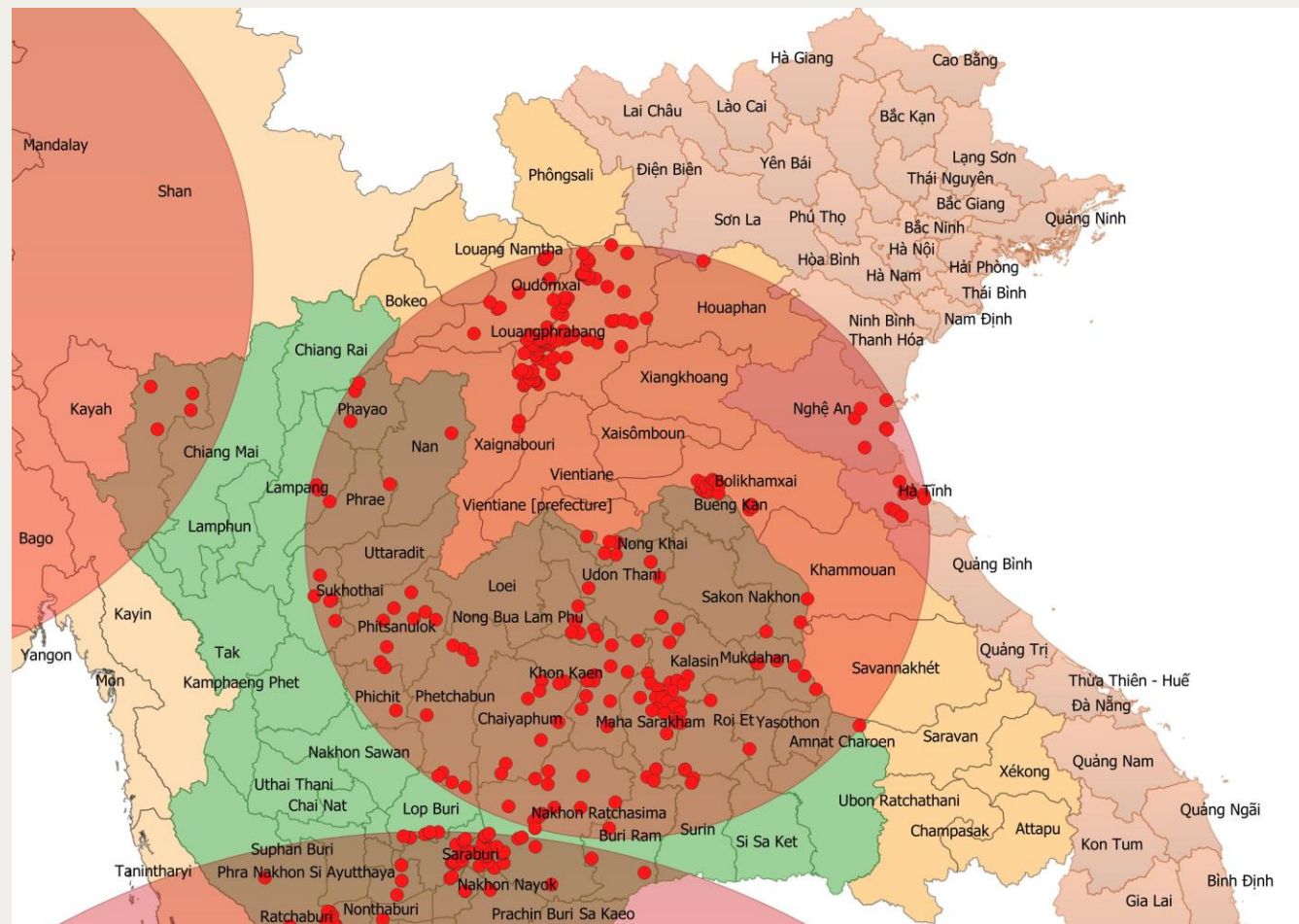
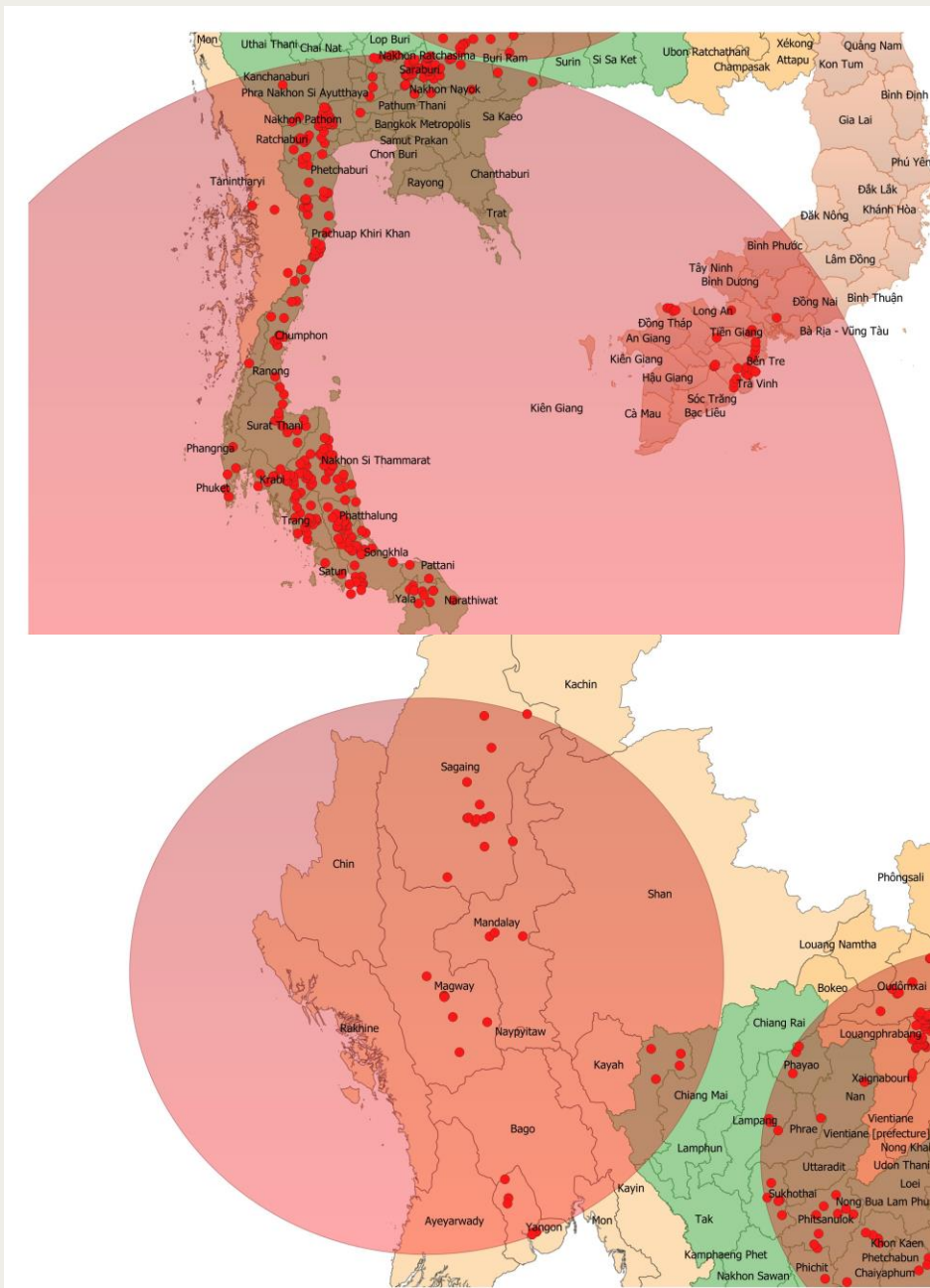
- Data WAHIS/ARAHIS
- Reported countries
  - Cambodia
  - China
  - Indonesia
  - Lao PDR
  - Malaysia
  - Mongolia
  - Thailand
  - Vietnam



# Cluster Analysis of FMD in Upper Mekong Countries(2019-2023)

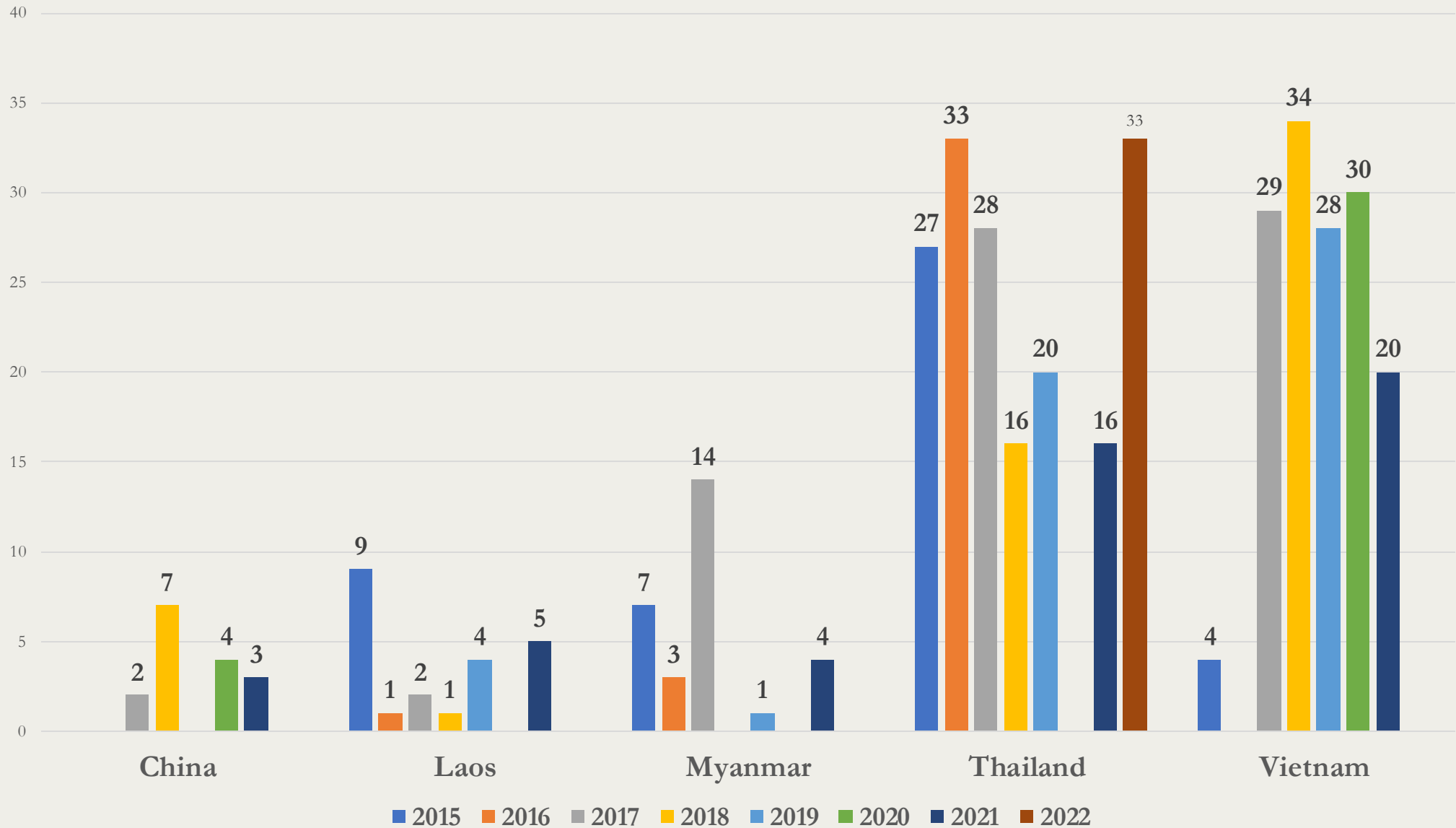


# Observed clusters (2019-2023)





# Number of samples submitted to WRLFMD (2014-2021)





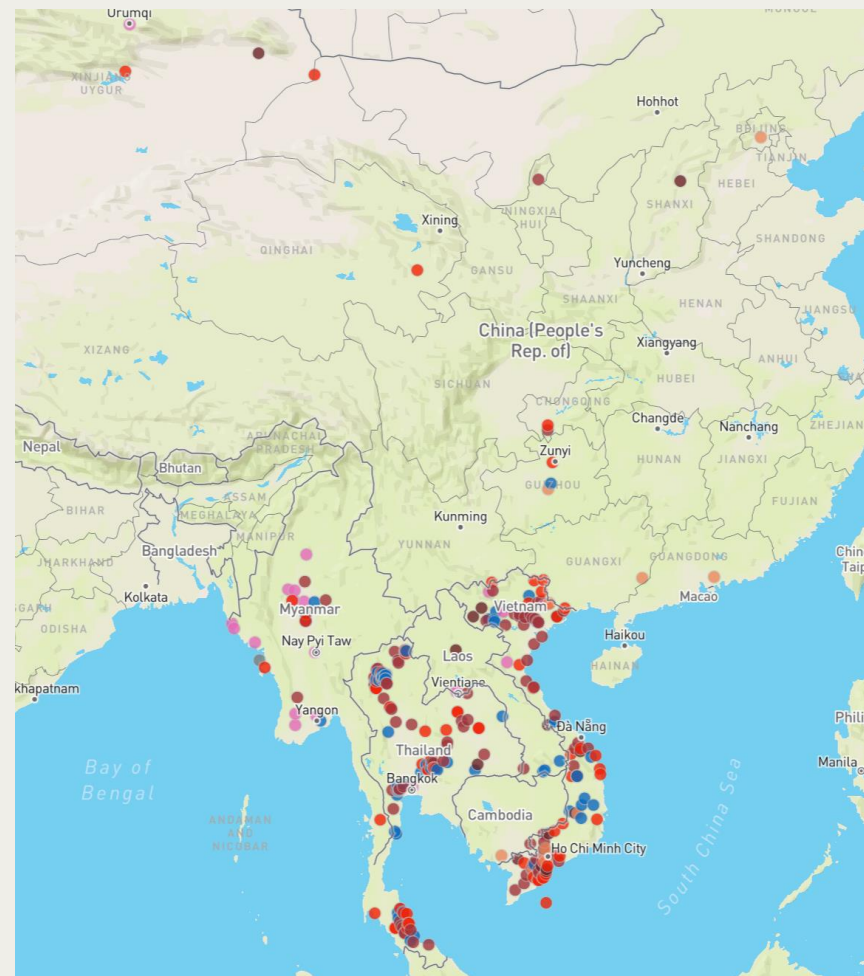
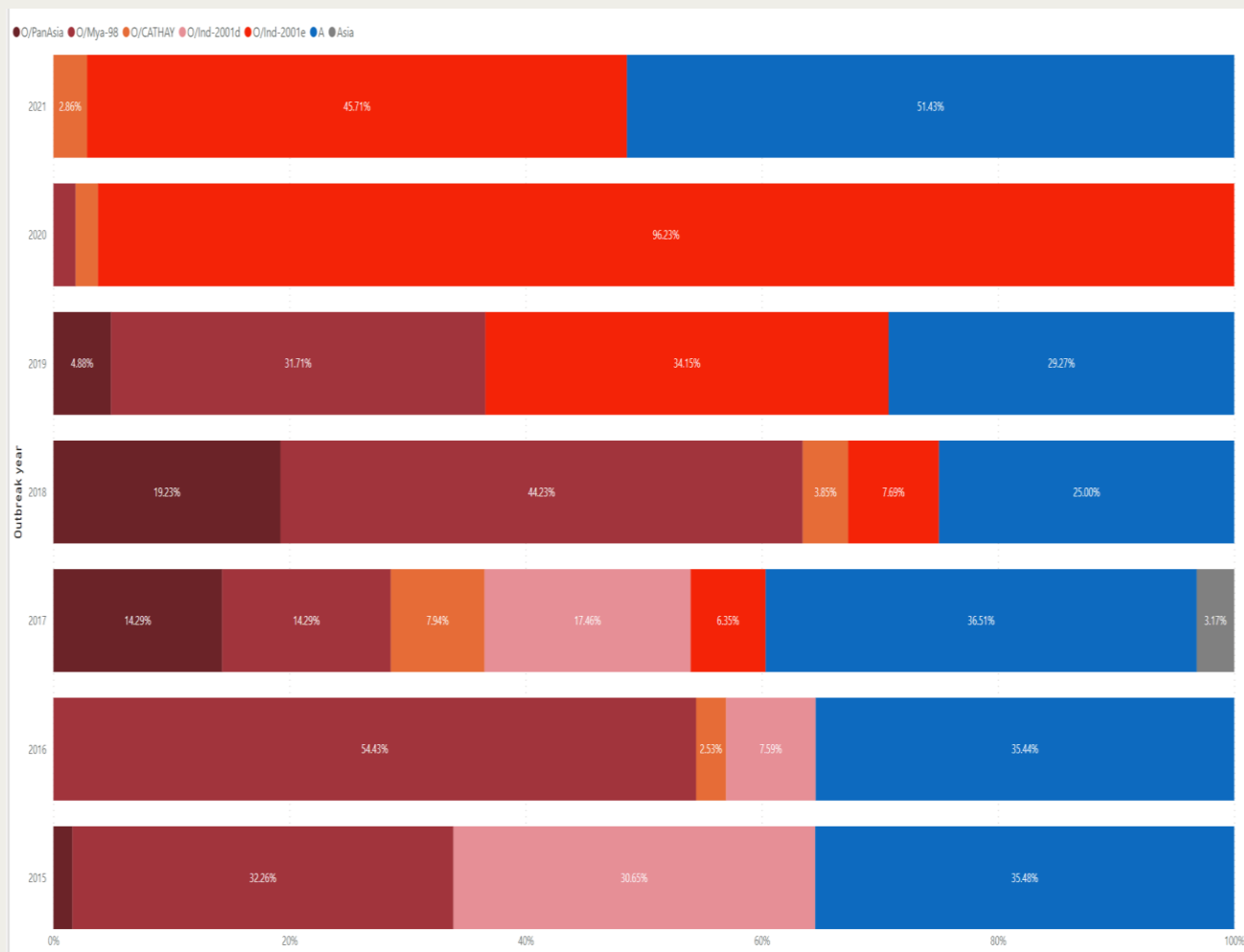
# Subtype distribution of FMD in Upper Mekong Countries (2015-2021)







# Subtype distribution of FMD in Upper Mekong Countries (2015-2021)





# Conclusion and Discussion

## CONCLUSION

- The trend line of reported cases were declined?
- 3 key clusters were identified during a specific period
  - Southern part of Thailand and Vietnam
  - Myanmar
  - Norther part of Thailand and Lao PDR
- Serotype Asia 1 has been detected in the Region since 2017
- Pre-dominant serotype is O/ME-SA/Ind2001e
- Serotype A –Epicenter is Thailand
- No FMD reports since 2020 in Lao PDR
- No FMD reports since 2021 in Myanmar

## DISCUSSION

- Proper epidemiological investigation
- Reporting become an issue:
  - ARAHIS is not functioning properly
  - Collecting data using Excel spreadsheet
  - ARAHIS/WAHIS integration
- Enhance sample submission
  - Pak Chong Laboratory (by land transport)
  - WRLFMD (both could be supported by WOAHSRR SEA)
- Sharing data on surveillance



THANK YOU FOR YOUR ATTENTION

ANY QUESTIONS ?