



World Organisation  
for Animal Health  
Founded as OIE

## REGIONAL FMD SITUATION UPDATES

**BOLORTUYA, P WOH SRR SEA**



# Source of information and Data analysis



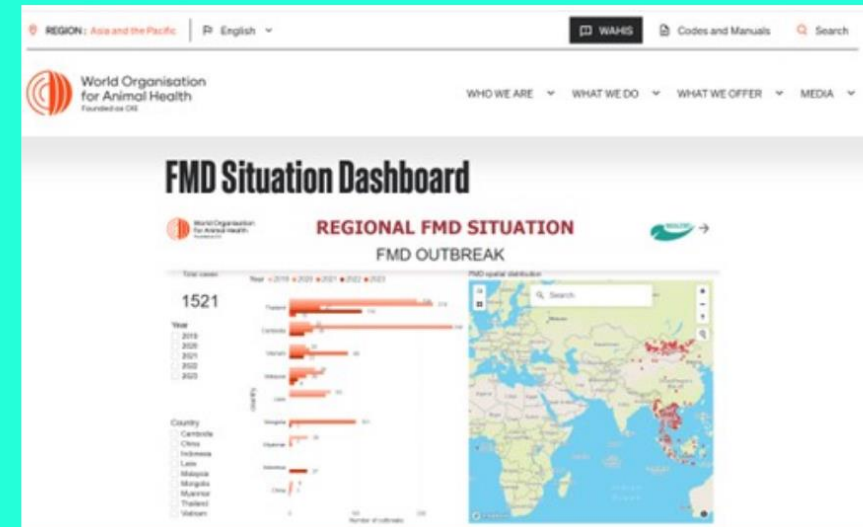
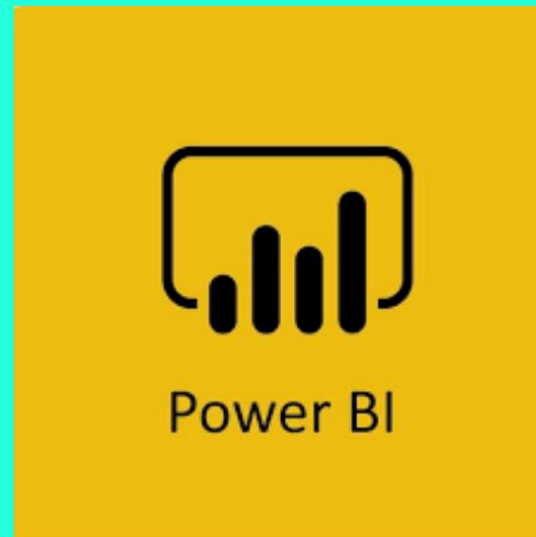
## Data source:

- ARAHIS
- WAHIS
- WOAH Reference Laboratory report
- Country reports

## Data analysis:

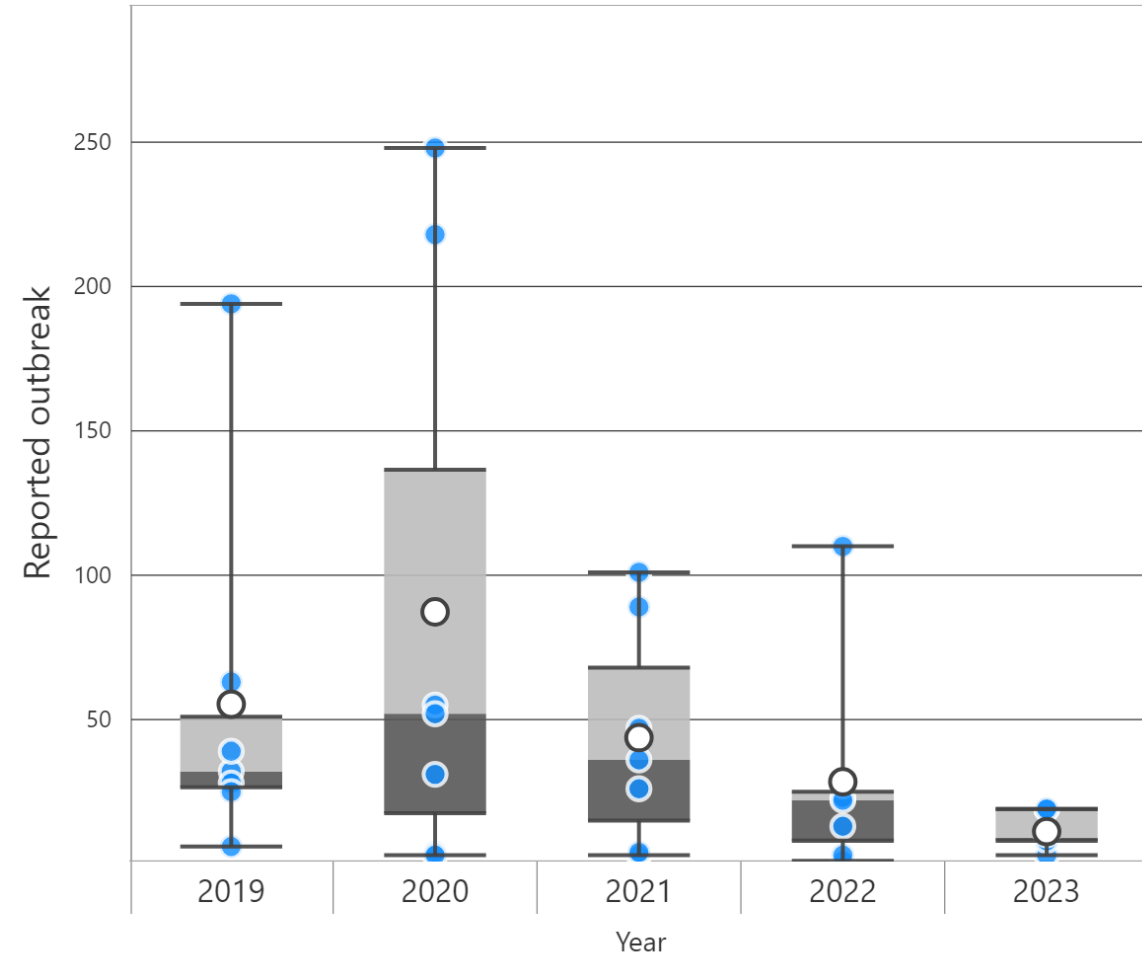
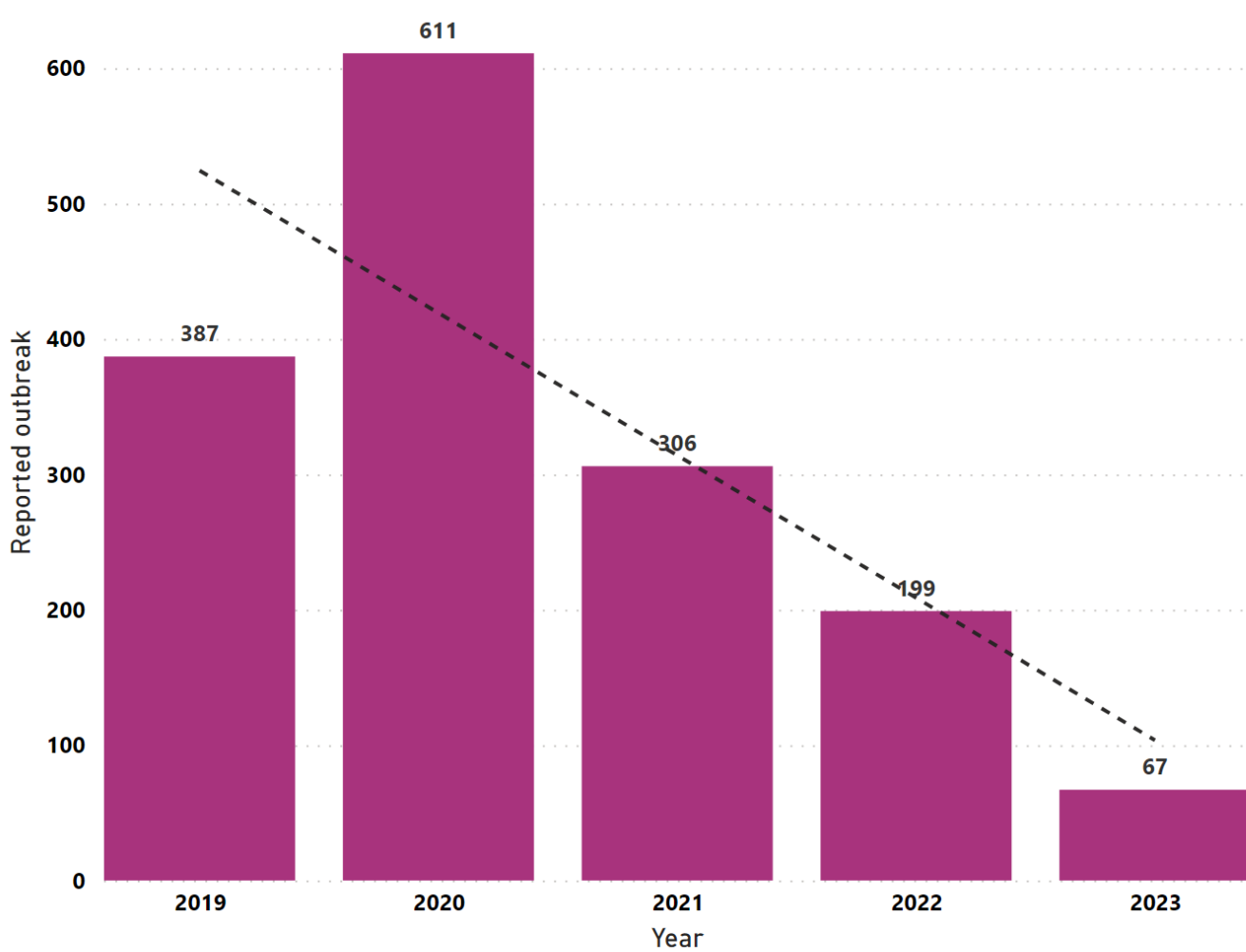
- Regional Ms Excel dataset
- PowerBI

The image shows two screenshots of web portals. The top one is the ASEAN Regional Animal Health Information System (ARAHIS) homepage, featuring a rooster image and a login form with fields for Username and Password. The bottom one is the World Animal Health Information System (WAHIS) homepage, featuring a photo of horses and a table titled 'Latest animal disease events' with columns for Country/Territory, Disease, and Date.





# REGIONAL FMD SITUATION



Total cases

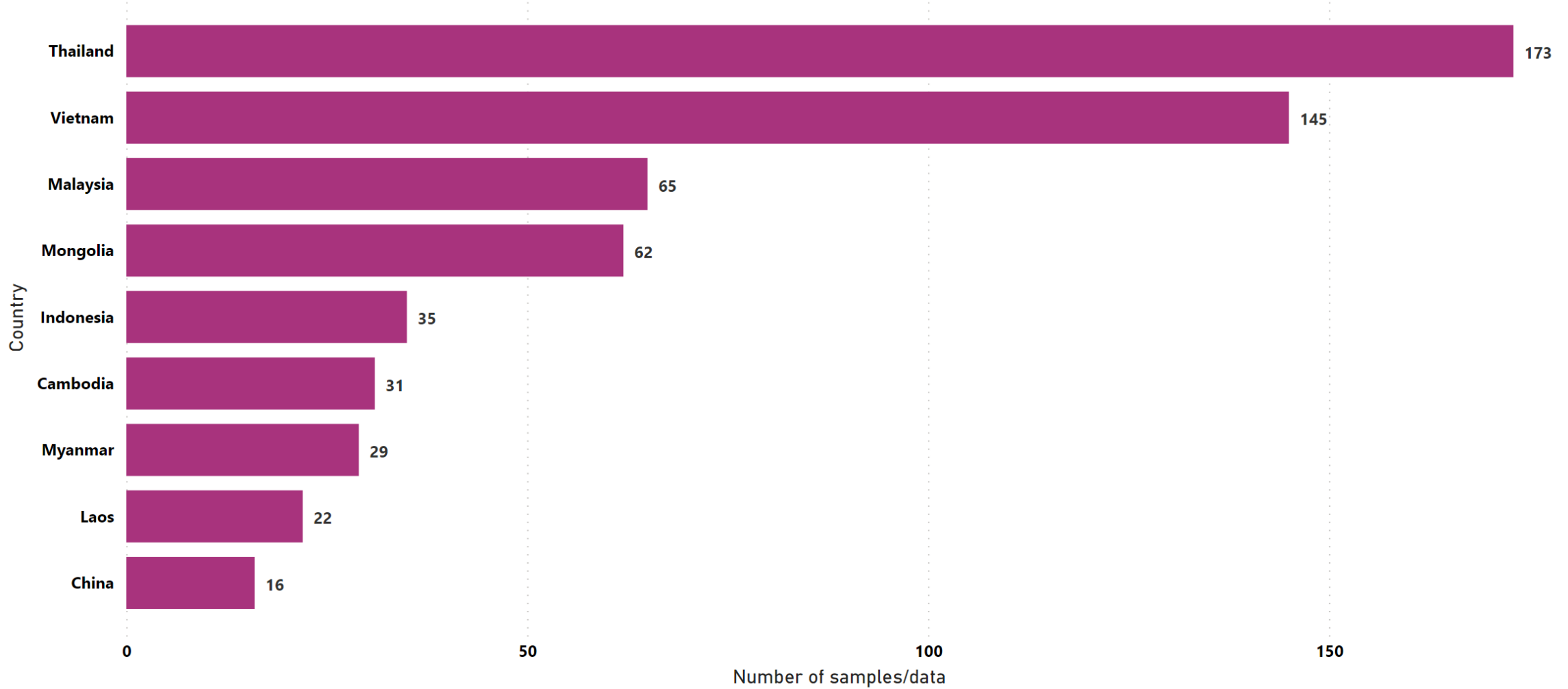
1570

Country

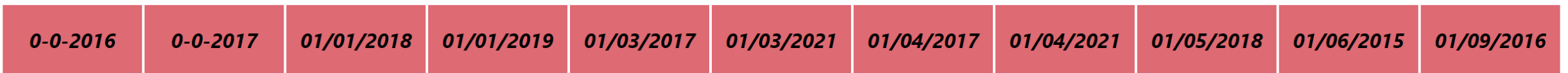
Cambodia	Indonesia	Malaysia	Myanmar	Vietnam
China	Laos	Mongolia	Thailand	



# Sample/info submission to WRLFMD



Date collected

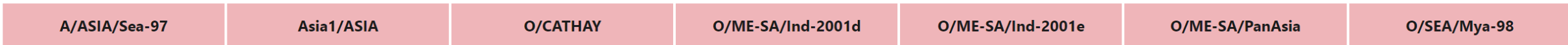




# FMDV GENOTYPE



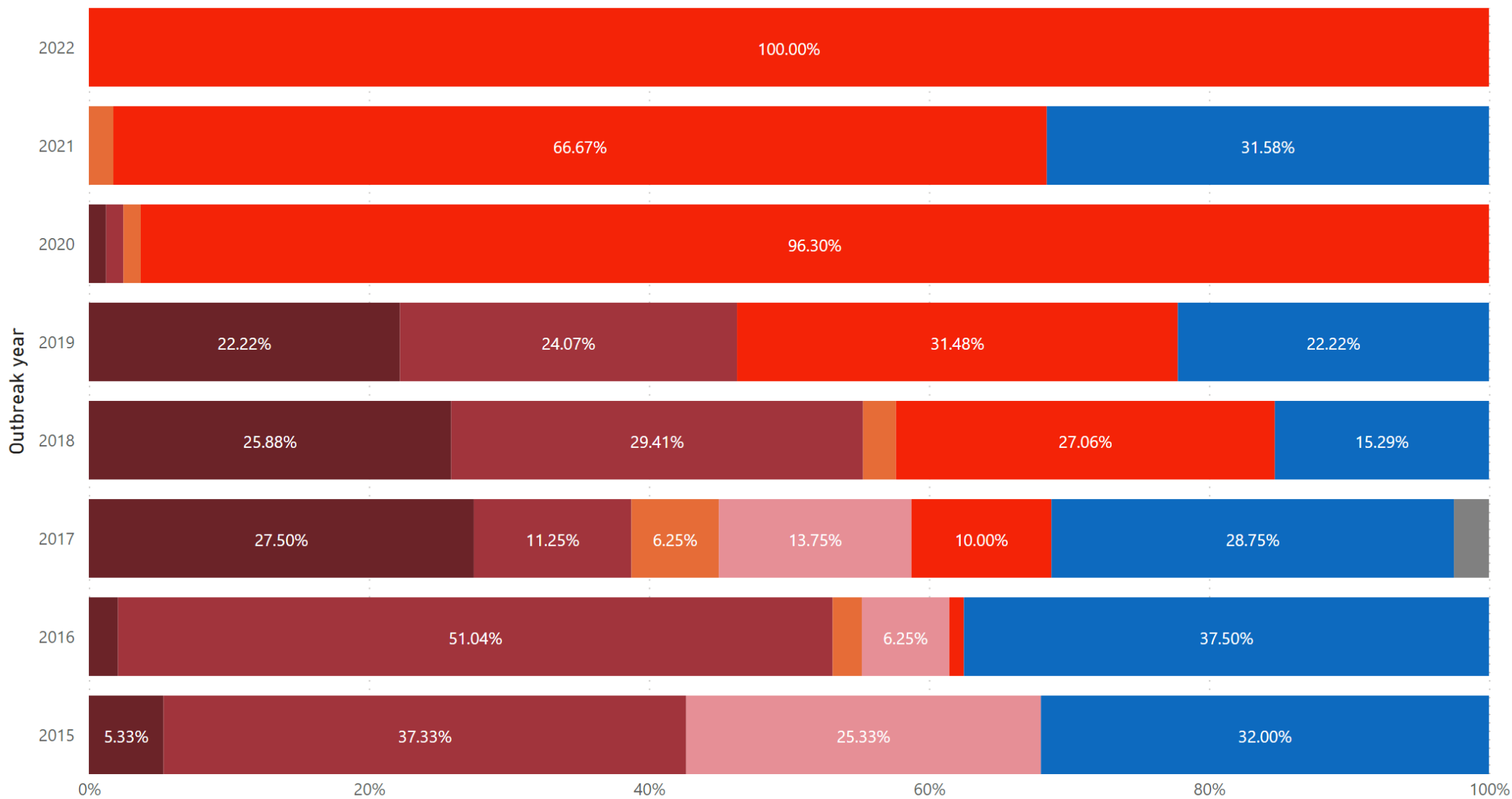
Lineages



● O/PanAsia 
 ● O/Mya-98 
 ● O/CATHAY 
 ● O/Ind-2001d 
 ● O/Ind-2001e 
 ● A 
 ● Asia

Number of country  
**9**

- Cambodia
- China
- Indonesia
- Laos
- Malaysia
- Mongolia
- Myanmar
- Thailand
- Vietnam



Data source: WRL/RRL reports



Lineages

A/ASIA/Sea-97

Asia1/ASIA

O/CATHAY

O/ME-SA/Ind-2001d

O/ME-SA/Ind-2001e

O/ME-SA/PanAsia

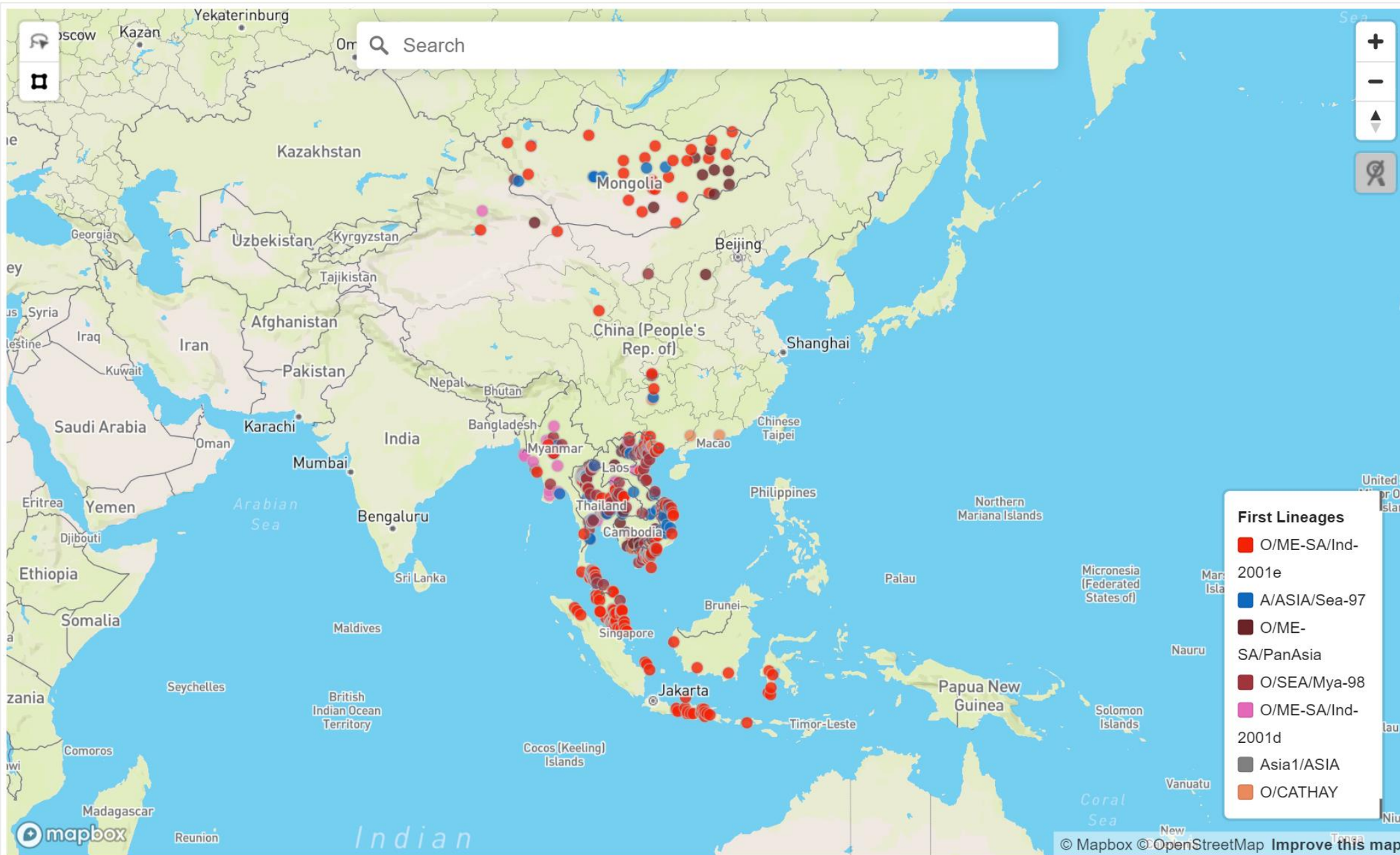
O/SEA/Mya-98

Number of country  
**9**

- Cambodia
- China
- Indonesia
- Laos
- Malaysia
- Mongolia
- Myanmar
- Thailand
- Vietnam

Report year

2015	2018	2021
2016	2019	2022
2017	2020	



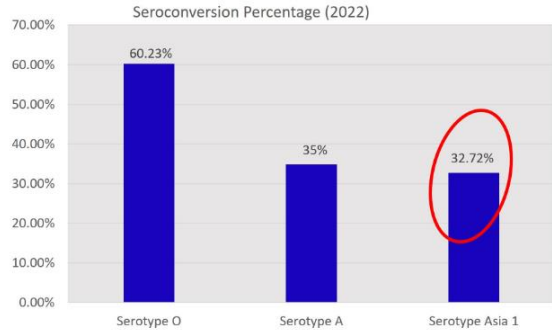
**First Lineages**

- O/ME-SA/Ind-2001e
- A/ASIA/Sea-97
- O/ME-SA/PanAsia
- O/SEA/Mya-98
- O/ME-SA/Ind-2001d
- Asia1/ASIA
- O/CATHAY

mapbox

# Risk for the Region

## SEROTYPE ASIA 1 IN SOUTH ASIA



Source: Nepal ppt, 1st South Asia TADs Coordination Meeting of GF-TADs for Asia and Pacific (FMD Roadmap meeting- 10-12 May 2023), Butan

### Background

➤ In Bangladesh, FMD is endemic and mainly caused by foot-and-mouth disease virus (FMDV) serotypes **O, A and Asia1** (Kamruddin et al, 1988; Anwar et al, 2014, 16; Rahman et al, 2018, Shahid et al, 2019).

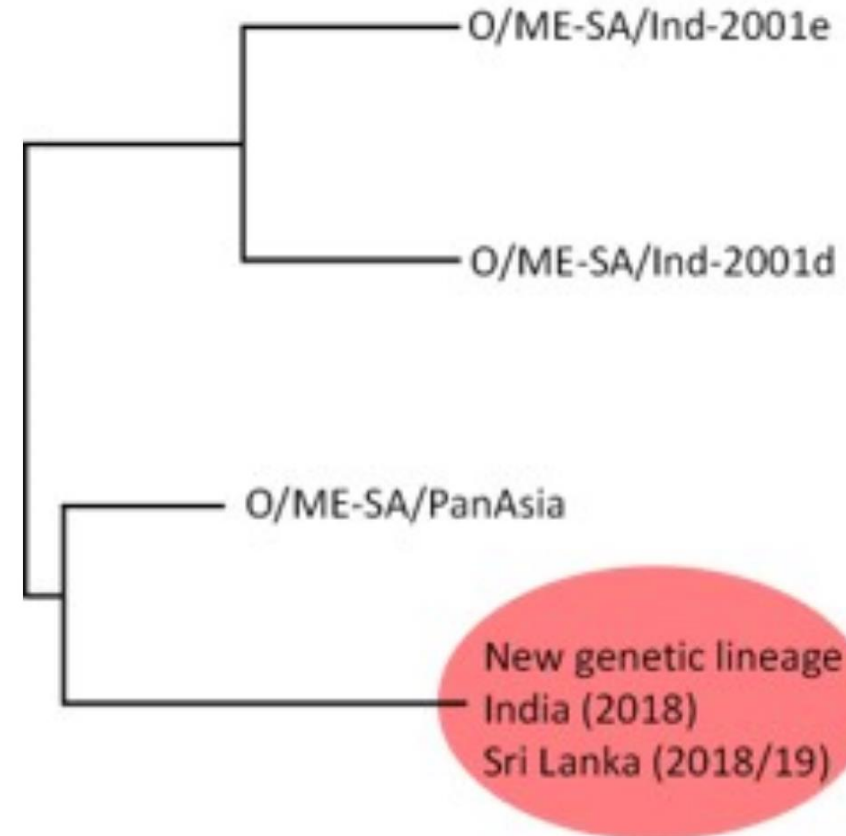
➤ All most 80% of infection caused by Serotype O, followed by Asia-1 and A

➤ Type C was last reported in 1995 (World FMD Reference Laboratory).

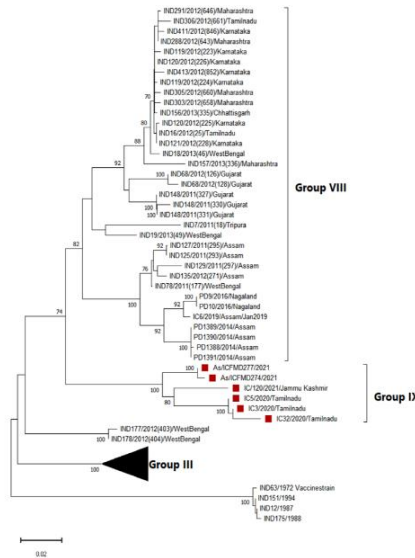
➤ All the serotype O viruses belonged to the ME-SA toptotype, phylogenetically clustered together with India 2001 (Ind2001) lineage under middle-east, south Asia (ME-SA) toptotype.

Source: Bangladesh ppt, 1st South Asia TADs Coordination Meeting of GF-TADs for Asia and Pacific (FMD Roadmap meeting- 10-12 May 2023), Butan

## NEW LINEAGE



### Serotype Asia1 (2021-2022)



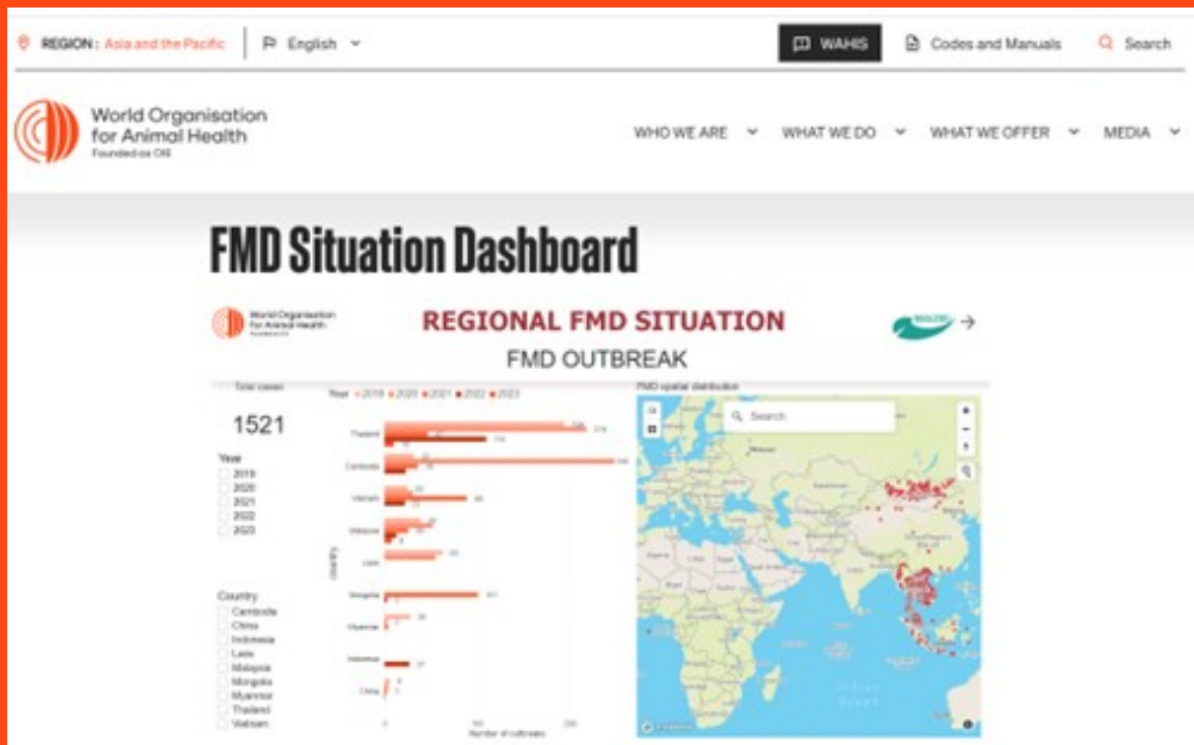
✓ Three FMDV serotype Asia1 isolate collected during 2021 from the state of Jammu & Kashmir clustered within Group-IX (BD-18) whose emergence has been described recently in January, 2018 in Bangladesh and in Tamilnadu during the month of January 2020

✓ The analysis indicates extended dominance of Group-IX in India.

Source: India ppt FMD Reference laboratory network 29-November 2021.

# THANK YOU FOR YOUR ATTENTION

<https://rr-asia.woah.org/en/our-mission/our-mission-regional-strategies/the-south-east-asia-and-china-foot-and-mouth-disease-seacfmd-campaign/>



Scan me!