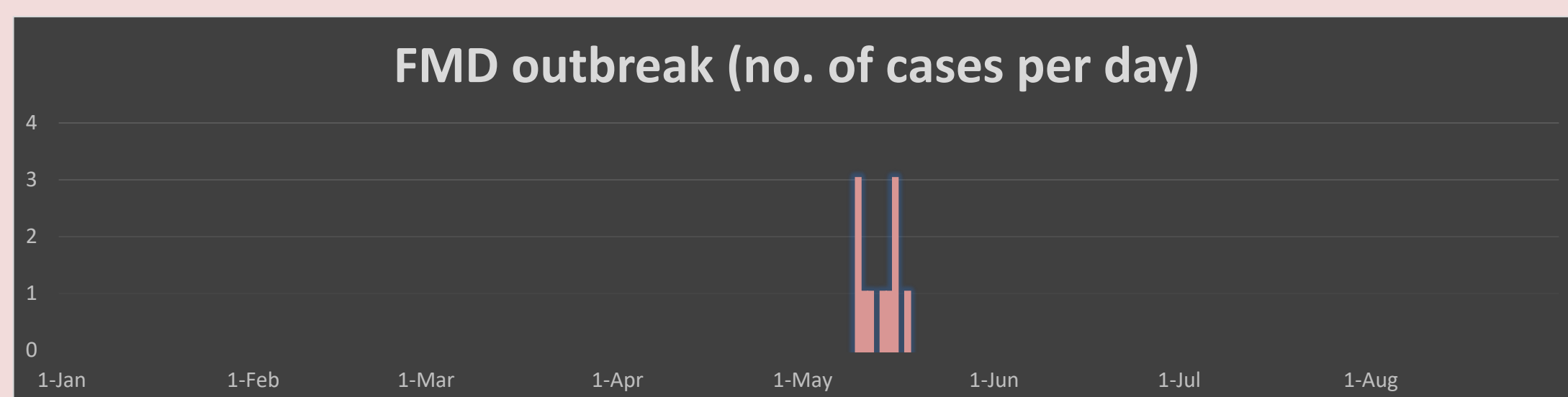


FMD SITUATION

◆ Temporal distribution

- Total no. of outbreaks: 11
(9 Cheongju-si(City), 2 Jeungpyeong-gun(county))



◆ Spatial distribution

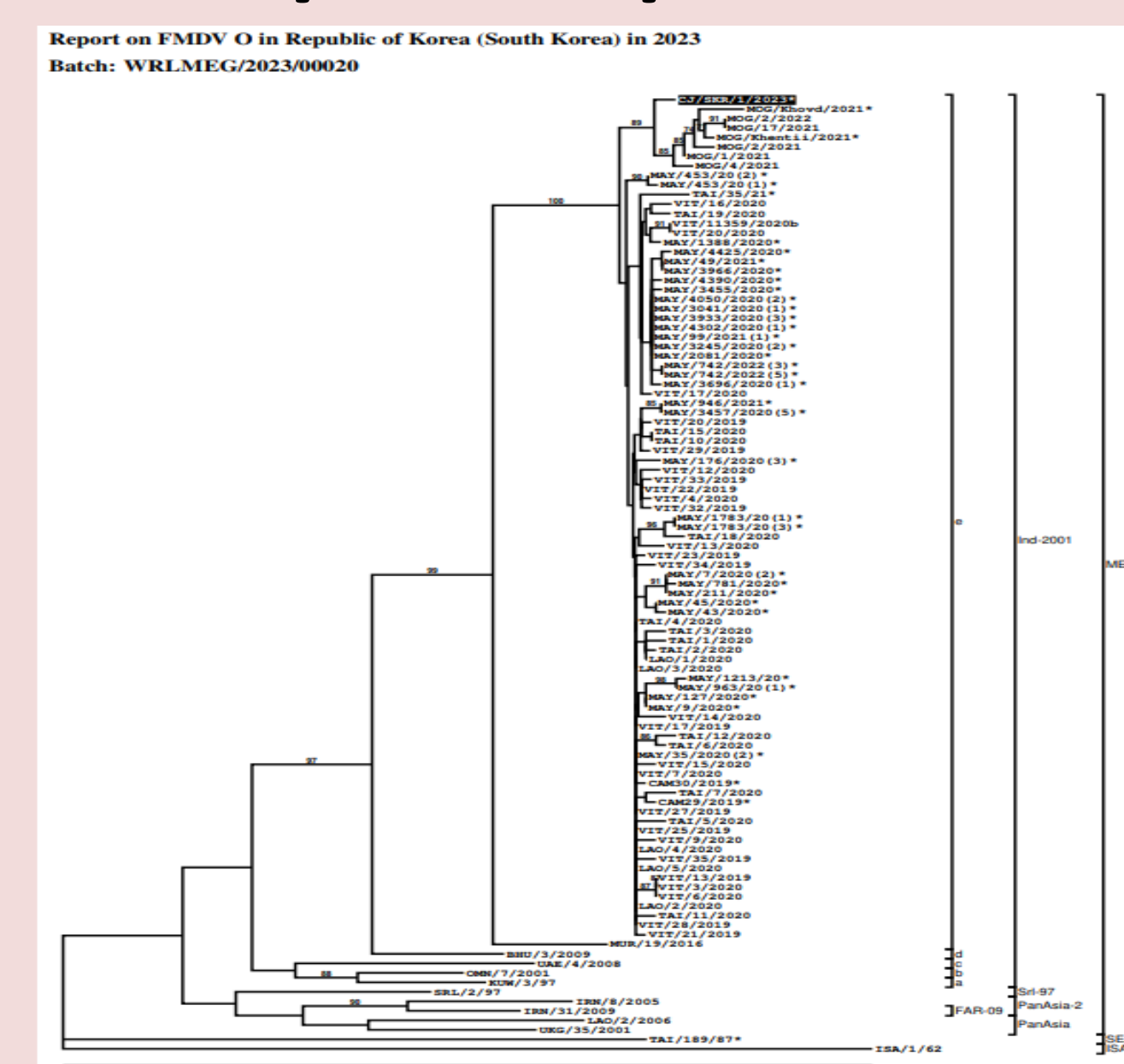
- No. of provinces affected: 1

- ◆ Number of affected animals: 36 heads
(35 cattle, 1 goat)



◆ Serotype distribution : O/ME-SA/ind-2001e

- Serotype: O
- Topotype: ME-SA
- Lineage: Ind-2001
- Sub-lineage: e



◆ Cause for the introduction

- Epidemiological investigation being carried out

◆ Epidemiological changes

- Increased FMD cases in neighboring countries

The following measures were taken to prevent the spread of FMD, which broke out in about four years since 2019

Stamping out

- All susceptible animals in the FMD-affected farms were culled
- No. of culled animals : 1,571 heads (1,510 Cattle, 61 Goats)

Vaccination

- Strategy: Blanket vaccination (nationwide)
- Targeted animals: All susceptible animals (cattle, pigs, goats)
- Priority :
1st) Livestock animals in the affected city
2nd) Livestock animals in neighboring cities
3rd) Livestock animals in the entire country
- Coverage: All susceptible livestock animals in the country

Movement control

- Movement control of livestock-related vehicles, facilities and workers
- 1) Immediately after the FMD outbreak, the government issued a temporary standstill order on vehicles and workers related to all susceptible livestock
- 2) The livestock markets were temporarily closed, especially markets in the affected city and neighboring cities were closed until FMD was eradicated
- 3) The entire FMD-affected city was set as a protection zone, and the movement of susceptible animals in the zone were controlled. The scope of protection zone was gradually reduced according to the FMD situation

Other measures

- The nationwide disinfection measures were taken on all farms and livestock-related facilities until eradication
- The government notified the FMD situation to public and promoted compliance with disease control measures

FMD RESPONSE ACTIVITIES

CONSTRAINTS & SOLUTIONS

Risk of spreading

- Constraints: Farms near the affected farm made the risk of spreading FMD very high
- Solution: Rapid FMD response activities include stamping out, movement control and vaccination

Rapid vaccination

- Constraints: Emergency vaccination required sufficient amount of vaccines on farms
- Solution: The government controlled the supply and demand of vaccines and supplied vaccines to all farms free of charge