



Recommendations and Plan of action for 2024-2025

in reference to WOAHA Resolution No. 28 and GF-TADs AI strategy

31.08.2023

Qingdao, P. R. China



World Organisation
for Animal Health
Founded as OIE



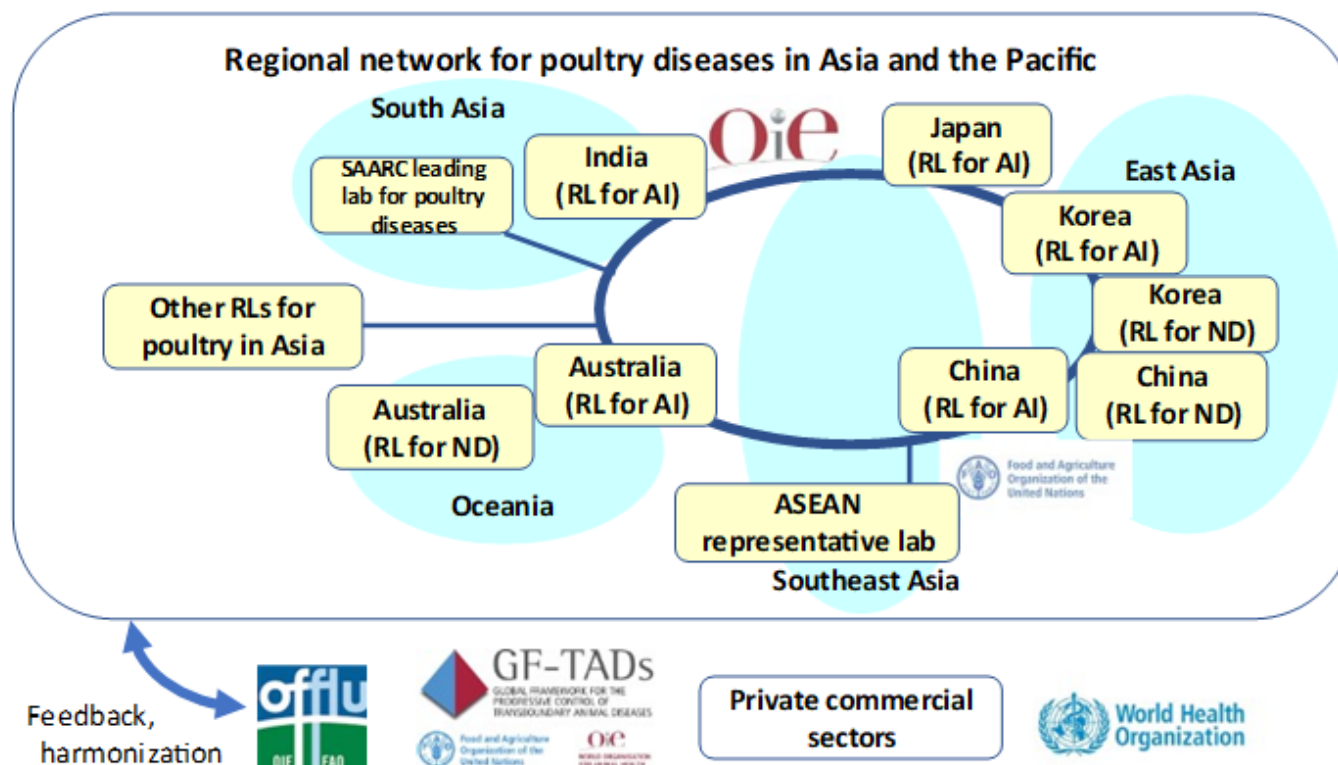
Objectives	Programme
1. to provide updates on recent outbreaks, surveillance data, and the impact of avian diseases over the past year	➔ Session 1: - Global and regional situation, Members' updates & experiences
2. to provide an update on OFFLU and other activities, following the recommendations from the previous meetings	➔ Session 1: - GF-TADs AI Strategy, OFFLU updates - WOAHA Animal Health Forum - Regional meeting in 2022
3. to update on diagnostic techniques and sampling for avian influenza in both domestic and wild birds	➔ Session 2: - Surveillance of HPAI, LPAI, ND, other avian diseases - Sampling and sample transportation, - Novel diagnostic technique
4. to discuss effective prevention and control of avian influenza and other avian diseases	➔ Session 3: Vaccine, Zoning, Compartmentalisation ➔ Session 4: Laboratory networking
- Wrap-up	➔ Session 5: Recommendation



- Based on the accumulated discussion in the past meetings as well as available expertise and platform in the region,
- Considering recent discussion and ongoing work on the development the Global Strategy for AI control,
- **Further discussion is expected on:**
 - How to link and leverage the expert network in the region? **Gaps?**
 - How to contribute to the **development** of the Global AI Strategy?
 - How to **implement** the Global Strategy once adopted, in the specific context of the Region

Asia-Pacific also has an expert group network on Avian diseases that comprises of all the WOAH RL experts for Avian diseases in Asia-Pacific, sub-regional leading laboratories and key regional partners which was formed under FAO/WOAH regional GF-TADs umbrella.

Institute of Regional Expert Network	
(OIE Reference Laboratories and Collaborating Centres)	
Australia	Australian Centre for Disease Preparedness, CSIRO
China, PR	Harbin Veterinary Research Institute (HVRI), CAAS
	National Diagnostic Center for Exotic Animal Diseases, CAHEC
India	Indian Council of Agricultural Research, NIHSAD
Japan	Hokkaido University
	NIAH, National Agriculture and Food Research Organisation,
Korea, RO	Animal and Plant Quarantine Agency (APQA), MAFRA
Russia	Federal Centre for Animal Health (FGBI "ARRIAH")
(Regional designated laboratories)	
ASEAN	VRI, Malaysia
SAARC	National Reference Lab for Poultry diseases, Pakistan
(Other experts)	
	Louis Pasteur Institute Cambodia
	Siberian wild bird surveillance institute
	DIC Wates from Indonesia
	OFFLU executive committee (HVRI, China)
	FAO
	OIE



Networking

1. WOAHA, in collaboration with WOAHA Reference Centres and OFFLU, **access the gaps in global coverage by national reference laboratories**, identify ways to address capacity gaps, and ensure the sustainability of laboratories in under-resourced countries
2. Members develop and implement national disease control and operational plans in cooperation and coordination with wildlife health authorities, public health authorities and the private sector to ensure a **multi-stakeholder effort** to combat avian diseases
3. Promote **One Health** approach to mitigate the risks of avian influenza

Sharing information

1. Maintain transparency through timely and comprehensive **reporting** of avian diseases
2. Promptly **share samples and virus isolates**, virus sequence data, and associated epidemiological information
3. **Share genetic antigenic characterization** of circulating virus strains, including comparison with existing vaccines, to infer levels of protection

Preparedness and control

- Conduct **appropriate, risk-based, comprehensive and systematic monitoring and surveillance** in domestic birds, wild birds (e.g., along flyways) and in other susceptible animal species
- May consider the implementation of **vaccination as a complementary disease control tool with proper post-vaccination monitoring and exit plan**
- Effective **implementation of national control plans**
- Evaluate and pilot potential **novel diagnostics** for the rapid detection of avian disease pathogen

Capacity Building

- Strengthen the human resource capacity and sustainable infrastructure of Veterinary Services, including diagnostic capability and early warning systems
- Increase investment from funding institutions, the private sector, resource partners and development agencies
- Resource mobilization and private-public-partnership

Group 1	Group 2	Group 3
Hualei Liu	Gounalan Pavade	Bolortuya Purevsuren
Experts from Reference Labs <ul data-bbox="140 592 471 949" style="list-style-type: none">• Australia• India• Korea RO• Japan• China RO	<ol data-bbox="904 435 1375 1249" style="list-style-type: none">1. Australia2. Bhutan3. Cambodia4. Chinese Taipei5. Iran6. Japan7. Korea RO8. Mongolia9. Nepal10. Singapore11. Sri Lanka	<ol data-bbox="1681 435 2114 1249" style="list-style-type: none">1. Bangladesh2. China3. India4. Indonesia5. Laos6. Myanmar7. Malaysia8. New Zealand9. Philippines10. Thailand11. Vietnam

Group (1) Experts from WOAAH Reference Laboratories

1. How to link and leverage the expert network in the region?
2. What support expert networks can provide to regional Members?
3. Gaps?

Group (2& 3) Representatives from Members

1. What are the challenges for national and regional preparedness, prevention and control, reporting of avian diseases (HPAI, LPAI, ND)?
2. What would be the regional approach to overcome those challenges?
3. How OFFLU/WOAH/Expert network can support your country for sufficient and sustainable preparedness and control of avian diseases?



9:00 – 9:30	Introduction to group work
9:00 – 10:30	Group work (including tea break)
10:30 – 11:00	Group Feedback
11:00 – 11:30	Recommendation
11:30 – 12:00	Closing
12:00 – 13:00	Lunch
13:00 -	Field Trip

Thank you!

Contact information



World Organisation
for Animal Health
Founded as OIE