



# GF-TADs

GLOBAL FRAMEWORK FOR THE  
PROGRESSIVE CONTROL OF  
TRANSBOUNDARY ANIMAL DISEASES



Food and Agriculture  
Organization of the  
United Nations

OIE

WORLD ORGANISATION  
FOR ANIMAL HEALTH



## GF-TADs *Pacific sub-region update*



## Priority Diseases

- ***FMD – absent***
- ***HPAI – absent***
- ***Rabies – absent***
- ***PPR – absent***
- ***ASF – Timor Leste (Sep 2019 report to OIE )***
  - ***genotype 2***
  
  - ***Papua New Guinea (Mar 2020 report to OIE )***
  - ***genotype 2***



## New or Emerging TADs

### ***Caseous lymphadenitis (Corynebacterium pseudotuberculosis)***

- *non-fatal, severe production-limiting disease (A\$30m /yr)*
- *detected in sheep & goats in Fiji (Nov 2019)*
- *source: 150 breeder sheep and goats imported from Australia (2016); lifetime quarantine*
- *only progeny released from quarantine but were infected via contact with infected dams*
- *Eradication being planned via annual serology test (ELISA ) and cull program*
- *effective vaccine available but eradication is preferred option*
- ***population at risk : 10,000 sheep ; 250,000 goats***



# Work during COVID-19

## COVID-19 impacts

- *prevented emergency preparedness training workshops*
- *some planning and development of public awareness campaigns continued (e.g digital screens for display)*





**KEEP VANUATU FREE FROM  
AFRICAN SWINE FEVER  
ASF**



**PIG OWNERS**

- ✗ DON'T FEED MEAT SCRAPS TO PIGS
- ✓ WEAR CLEAN CLOTHES & FOOTWEAR AROUND PIGS
- ✓ REPORT ANY SICKNESS OR DEATH IN PIGS TO LIVESTOCK OFFICERS
- ✓ ALWAYS SOURCE PIGS FROM HEALTHY FARMS
- ✓ AVOID VISITING OTHER PIG FARMS




**KEEP FIJI FREE FROM  
AFRICAN SWINE FEVER  
ASF**



**PIG OWNERS**

- ✗ DON'T FEED MEAT SCRAPS TO PIGS
- ✓ WEAR CLEAN CLOTHES & FOOTWEAR AROUND PIGS
- ✓ REPORT ANY SICKNESS OR DEATH IN PIGS TO LIVESTOCK OFFICERS
- ✓ ALWAYS SOURCE PIGS FROM HEALTHY FARMS
- ✓ AVOID VISITING OTHER PIG FARMS




**KEEP TONGA FREE FROM  
AFRICAN SWINE FEVER  
ASF**



**PIG OWNERS**

- ✗ DON'T FEED MEAT SCRAPS TO PIGS
- ✓ WEAR CLEAN CLOTHES & FOOTWEAR AROUND PIGS
- ✓ REPORT ANY SICKNESS OR DEATH IN PIGS TO LIVESTOCK OFFICERS
- ✓ ALWAYS SOURCE PIGS FROM HEALTHY FARMS
- ✓ AVOID VISITING OTHER PIG FARMS



**KEEP SOLOMON ISLANDS  
FREE FROM  
AFRICAN SWINE FEVER  
ASF**



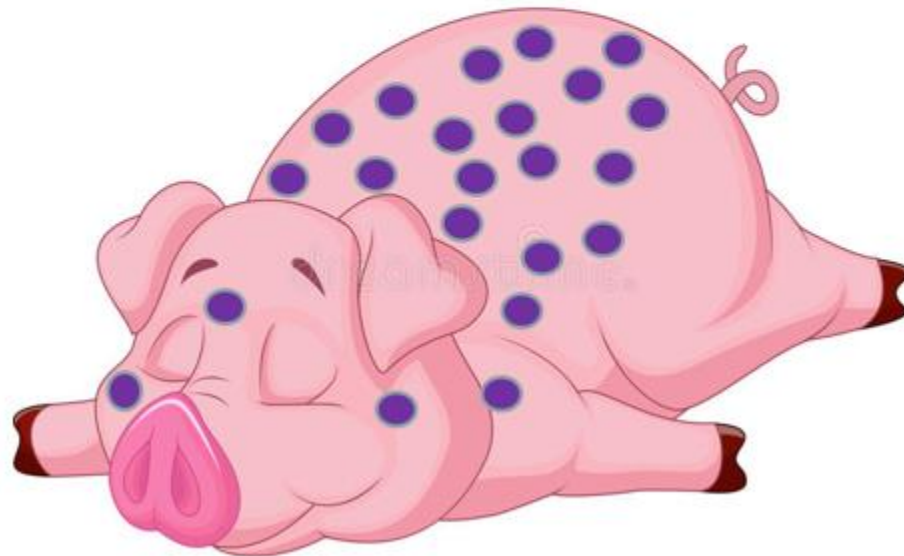
**PIG OWNERS**

- ✗ DON'T FEED MEAT SCRAPS TO PIGS
- ✓ WEAR CLEAN CLOTHES & FOOTWEAR AROUND PIGS
- ✓ REPORT ANY SICKNESS OR DEATH IN PIGS TO LIVESTOCK OFFICERS
- ✓ ALWAYS SOURCE PIGS FROM HEALTHY FARMS
- ✓ AVOID VISITING OTHER PIG FARMS





## EXERCISE PURPLE SPOT SYNDROME





## Future plans

### *ASF focused*

- *Improving border management /biosecurity systems to prevent entry of ASF-risk commodities*
- *Community awareness campaigns (e.g. no swill feeding )*
- *Surveillance systems for early detection*
- *Emergency preparedness and training for response agencies*

