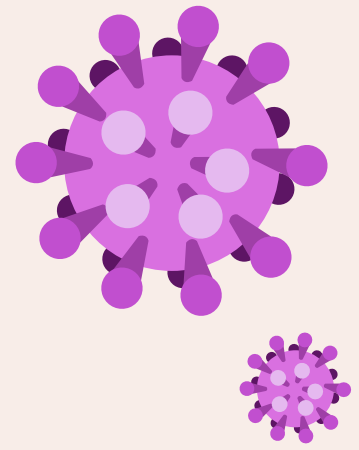


# ACTION PLAN TO FIGHT AGAINST FOOT AND MOUTH DISEASE OUTBREAKS



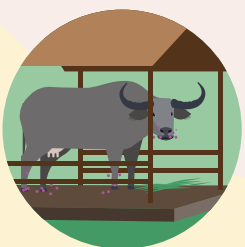
A quick guide to manage FMD outbreaks



## Do's



Separate sick animals from the rest of the herd using tethers, fences, or a natural boundary.



Keep sick animals under a shade on a dry surface. Observe them regularly, provide soft feed and clean water.



Report suspected FMD case(s) to the local animal health authorities immediately to prevent disease spread.



Regularly clean and disinfect all areas and infected material such as tools, vehicles, and clothes.



Safely handle and dispose of dead animals and their bedding, manure, and other contaminated animal products.



## Don'ts



Do not allow any animal movement or common grazing.



Do not buy or sell any animals until the outbreak subsides.



Do not share farm and animal shed equipment with your neighbours.



World Organisation  
for Animal Health  
Founded as OIE



For more information, please visit:  
[www.woah.org/en/disease/foot-and-mouth-disease](http://www.woah.org/en/disease/foot-and-mouth-disease)

