



Country Presentation

FMD situation and prevention

Republic of Korea

Subeom Lee, D.V.M.

Ministry of Agriculture, Food and Rural Affairs
FMD and Large Animal Health Control Division

Content of Presentation

Features of Republic of Korea

Veterinary Service System

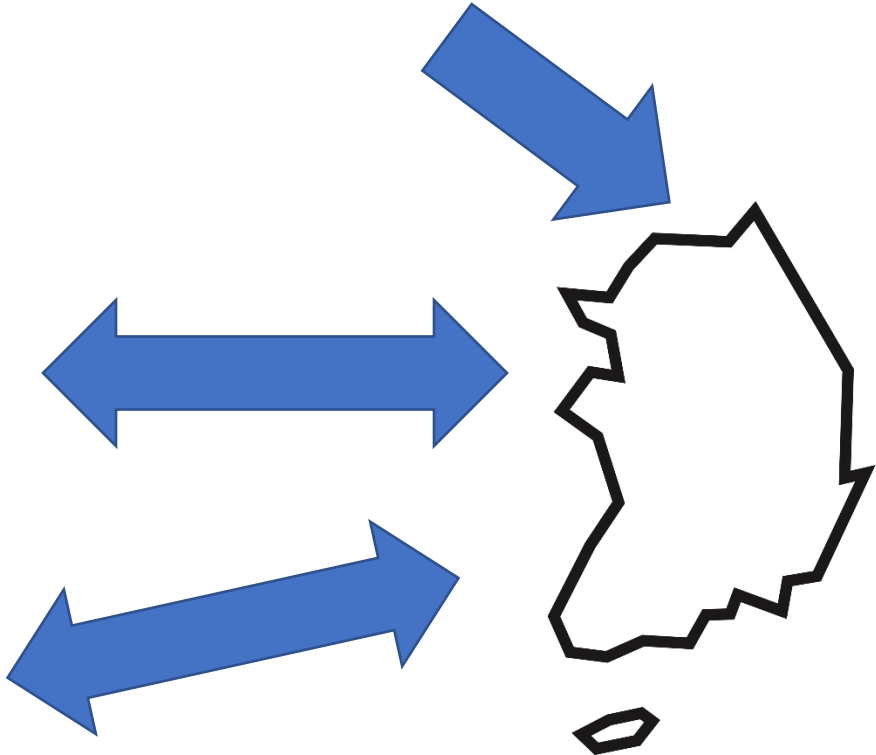
FMD Situation

FMD prevention activities

Features of Republic of Korea

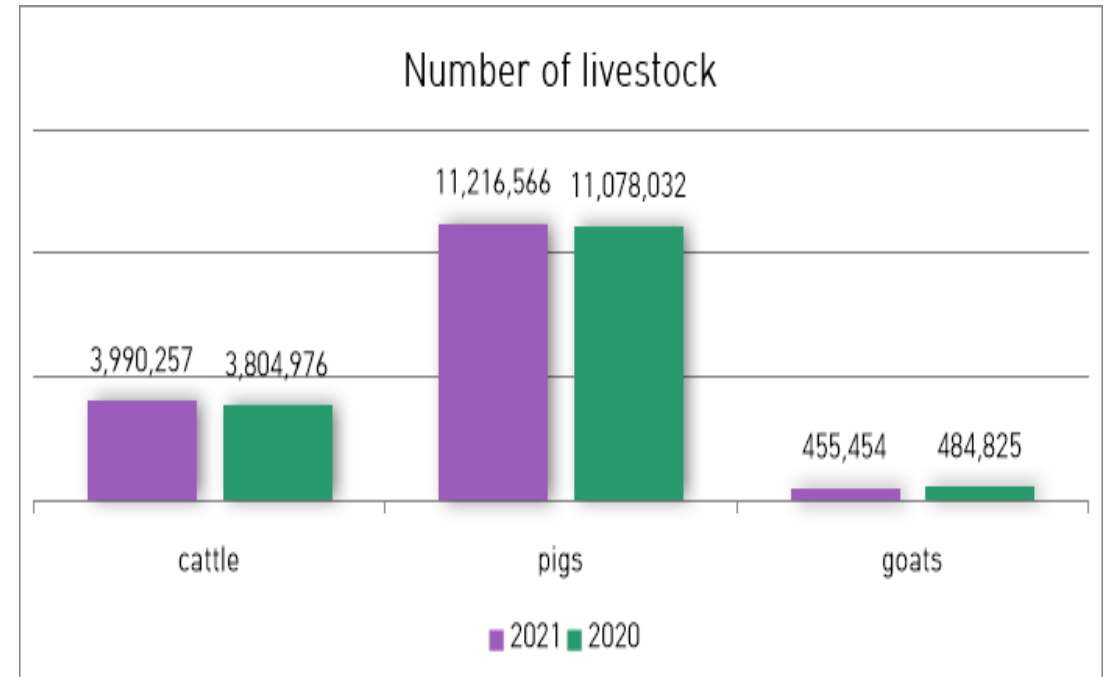
✓ Geographical feature

- Located in Northeast Asia
- Various FMD risk pathway

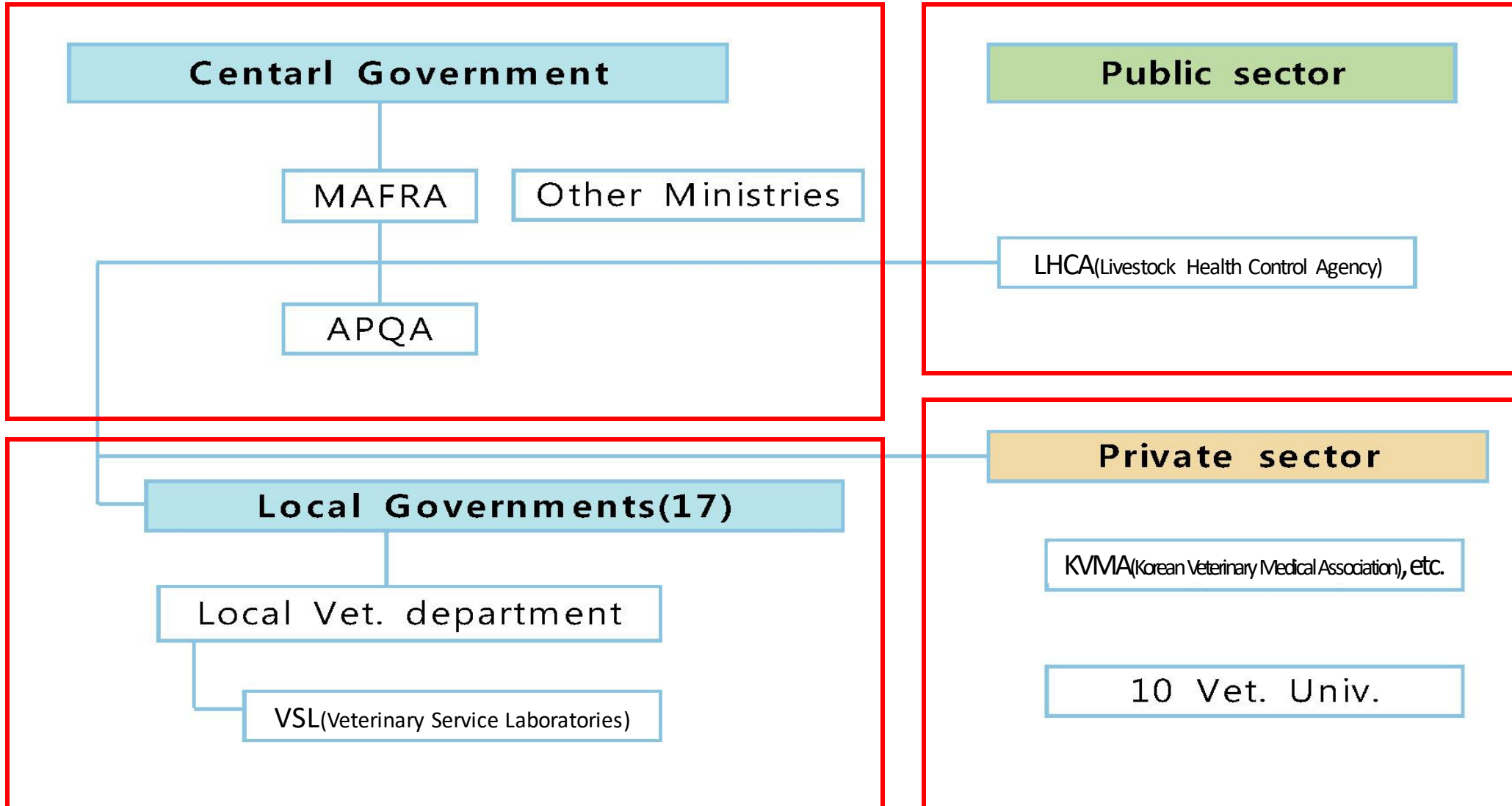


✓ Livestock industrial feature

- Pigs and cattle are main
- Some goats have been bred



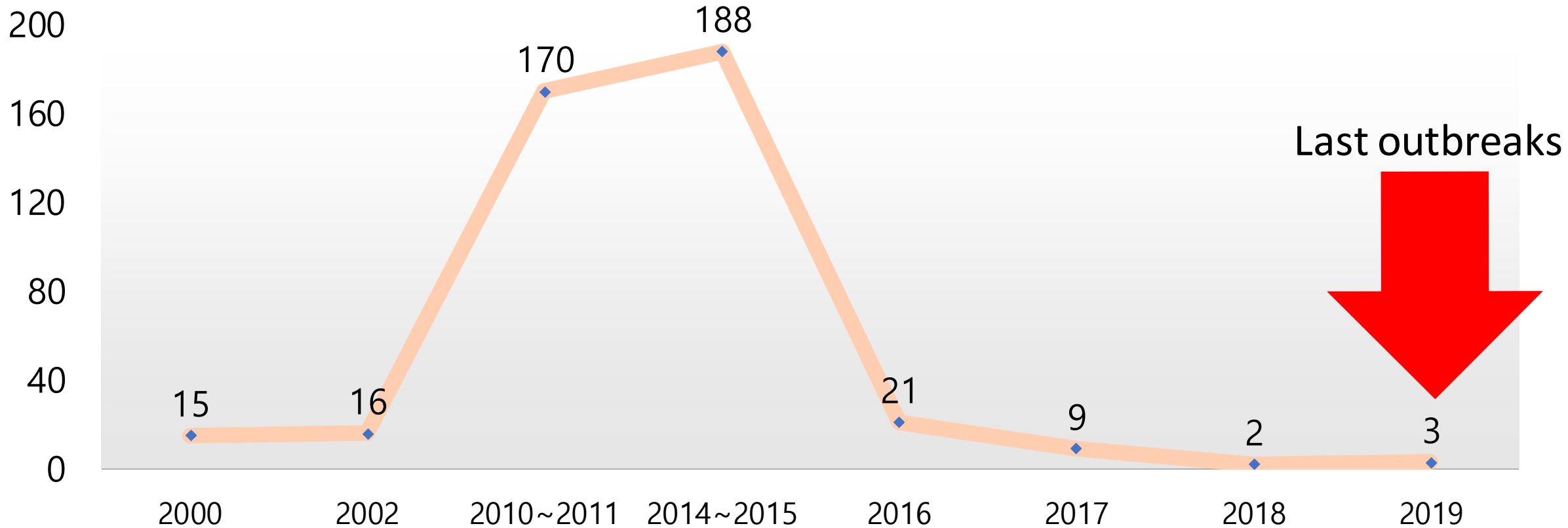
Veterinary Service System



FMD Situation in Korea

- ✓ Since 2019, FMD has not been occurred in Korea

The number of outbreaks of FMD in Korea



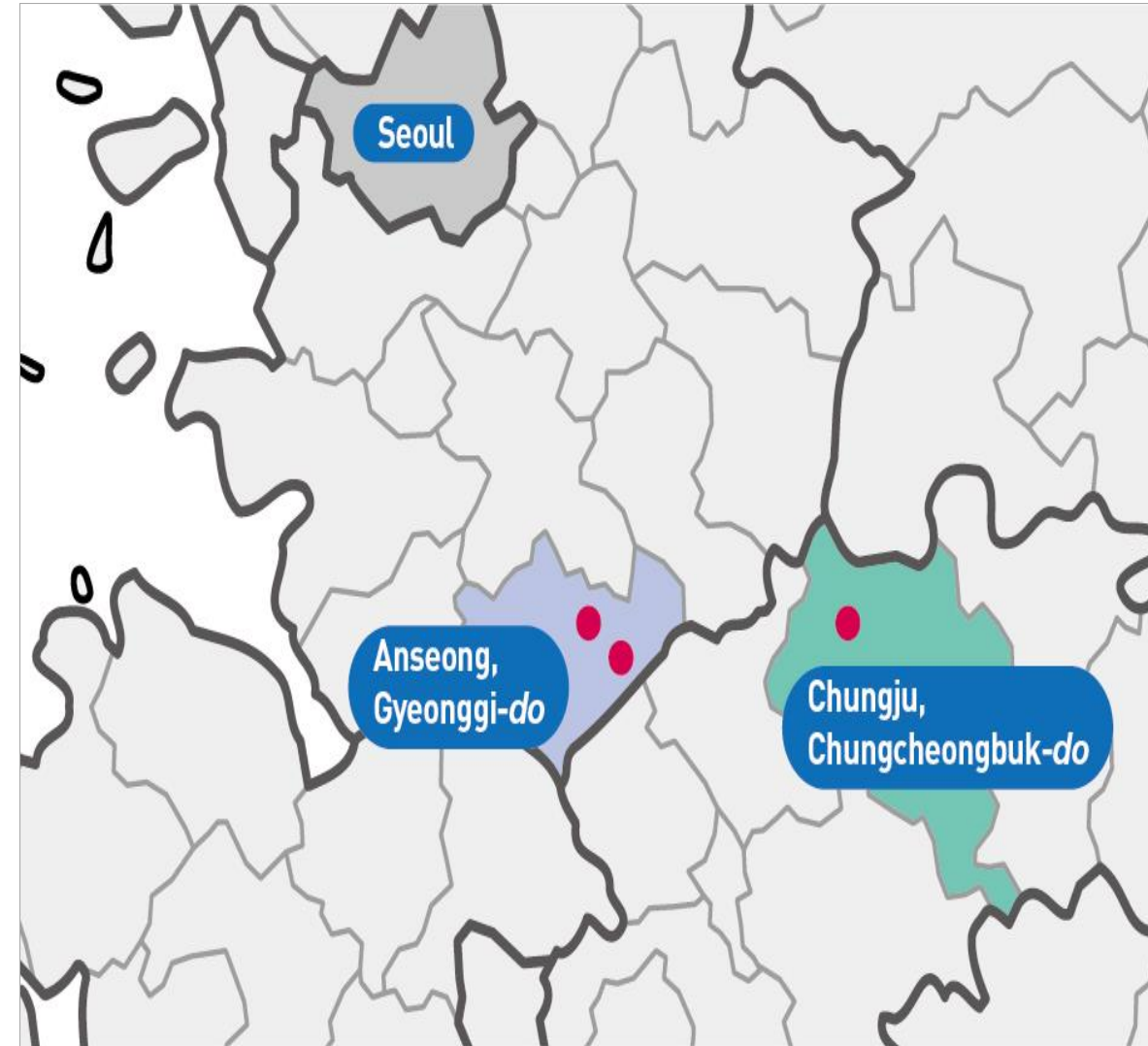
FMD Situation in Korea

✓ Recent outbreaks in 2019

- Virus type : O/ME-SA/Ind-2001e

City/Province(Do)	Date of occurrence	Total	Number of affected farms	
			Korean native cattle	Dairy cattle
Anseong Gyeonggi-Do	Jan. 28 (1st case)	1	-	1
	Jan. 29 (2nd case)	1	1	-
Chungju Chungcheongbuk-Do	Jan. 31 (Last case)	1	1	-
Total		3	2	1

✓ Eradicated in February 25, 2019



FMD Situation in Korea

Stamping-out

- ✓ Total 2,272 animals were culled
 - 203 from FMD outbreak farms
 - 2,069 from preemptive stamping out farms

Movement control

- ✓ Movement of livestock and vehicles on all farms that raised susceptible animals in outbreak cities (Anseong, Chungju) was restricted

Disinfection

- ✓ Nationwide disinfection had been conducted to all farms and livestock related facilities until eradication of FMD

Emergency vaccination

- ✓ 4 phase emergency vaccination

Phase	Scope of vaccination	Targets
1	Outbreak city	Anseong
2	Cities located nearby outbreak city	6 cities
3	Provinces located nearby outbreak city	5 Provinces (DO)
4	Whole country (except cities already vaccinated)	Whole country (except cities already vaccinated)

FMD Prevention activities

Vaccination

FMD Surveillance

Border Quarantine

FMD Prevention activities

✓ Vaccination

(1) Mandatory vaccination

- Susceptible livestock such as cattle, pigs, goats are mandatorily vaccinated by Act of MAFRA

(2) Vaccination campaign

- All cattle and goats are regularly vaccinated twice a year, April and October

(3) Serological surveillance for SP antibody

- Serological test for SP antibody has been conducted to confirm that susceptible animals were properly vaccinated

FMD Prevention activities

✓ FMD surveillances

(1) Clinical surveillance

- About 2,000 personnel for clinical surveillance have conducted clinical inspection

(2) Serological surveillance for NSP antibody

- Serological tests for NSP antibody have conducted to susceptible animals for confirming past infection of FMDV
- The tests have conducted for at least 600 thousand animals every year

(3) Antigen Surveillance

- FMDV antigen tests for livestock related facilities and vehicles have conducted to finding FMDV circulation in environment.

FMD Prevention activities

✓ **Border quarantine**

(1) Import Control Procedures

- Quarantine certificates issued by exporting countries are needed. and it should follow requirements agreed with the Republic of Korea
- Animal or livestock products from FMD outbreak countries are prohibited.
- Live animals should be isolated and quarantined for 15 days at quarantine station after arrival

(2) Disinfection for people who relate livestock industry

- All livestock industry related people, such as farm owners, veterinarian, must be disinfected upon arrival at the airport/seaport.

Thank You for your attention