



Mahidol University



World Organisation
for Animal Health
Founded as OIE



Wildlife Health surveillance in LAO PDR

Name : watthana Theppangna DVM, PhD

Position : Deputy Director

Institution/Agency: National Animal Health Laboratory (NAHL)

South-East Asia Wildlife Health Network Meeting

Nonthaburi, Thailand
5 September 2022



Status of wildlife disease surveillance

- *Briefly outline surveillance of diseases (type/focus), status of surveillance*
 - Active surveillance up to the project activities
 - Passive surveillance
- *What is the legal basis for wildlife surveillance – law, ministerial order, etc.*
 - *“National Standard Operating Procedure for Wildlife Health Surveillance in Lao PDR”*
 - *the Aquatic and wildlife Law Ref No 07/NA, dated 24 December 2007*
 - *the Degree of Prime Ministry of Agriculture and Forestry, Dated 18 th March 2017 on the function and the role of the ministry of agriculture and forestry.*
 - *the agreement of the minister of agriculture and forestry ref. no. 1137/MAF, date 23rd May 2018 on the steering committee and secretariate of CITES lao PDR*
- *What is the source of funds for conduct of wildlife disease surveillance*
 - Mostly the source of funds for wildlife disease surveillance is from the project regarding the specific project funding support
 - From 2008-2013 : PREDICT 1 under supported by USAID
 - 2015 -2018: LACANET project support by EU
 - 2015_2019: PREDICT 2 under support by USAID
 - 2017_2019 : emerging infectious disease in wildlife supported APPEIR project support
 - 2020-2022: wildhealthnet project supported by DTRA
 - 2021-2022: corona surveillance in wildlife supported by Canada research institute
- *List out agencies/stakeholders involved and briefly state their roles*
 - **Implementer**
 - NAHL, Department of livestock and fisheries
 - Department of forestry
 - Department of aquatic and wildlife management ,
 - Mahidol university
 - University of Laos
 - Ministry of health
 - Pasteur due Laos

Donor: USAID, APPEIR, EU, DTRA , Canada research institute, UC DAVID

Common activities for the wildlife health activities

- ✓ Policy Development
- ✓ Operationalize Surveillance
- ✓ Capacity Bridging
- ✓ Data Collection & Management



Status of wildlife disease surveillance

- *Which laboratories you send samples for testing?*
 - *In country: NAHL, Pasteur du Laos (research only)*
 - *International institute: Pasteur institute, university from abroad, and reference laboratory from animal health*
- *Summary of sample collection and the lab analysis that were conducted*

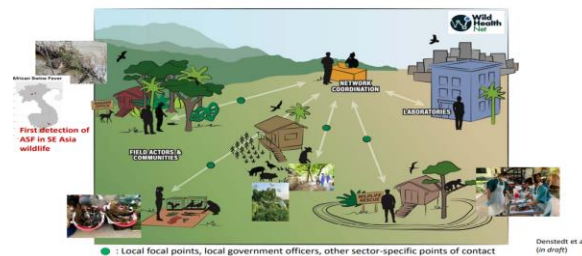
Total sample	Bat	wild bird	Carnivor	Non human primate	other mammals	Primate	Rodent	Rodent and Shews	wild pig	source of samples keep
11104	3750	38	36	120	828	94	6085	153		NAHL
4698	470	0	49	42	144	0	3648	342	3	NAHL
1407	1244						163			IPL

- *How do you store and analyse wildlife disease data?*
 - LIM systems, and the future WHIP data information will be applied
- *How were the results of data analysis applied/used ?*
 - Sharing information between animal health and human health .
 - Scientific sharing
 - Meeting sharing
 - Government Policy discussion
- *What the top 3 constraints/problems of implementing Wildlife disease surveillance in your country*
 - No Funding support from the government, mostly are from the project and international organization
 - Insufficiency of Human resources as the network for reporting and sampling
 - Lacking Internal expertise and collaboration network channel



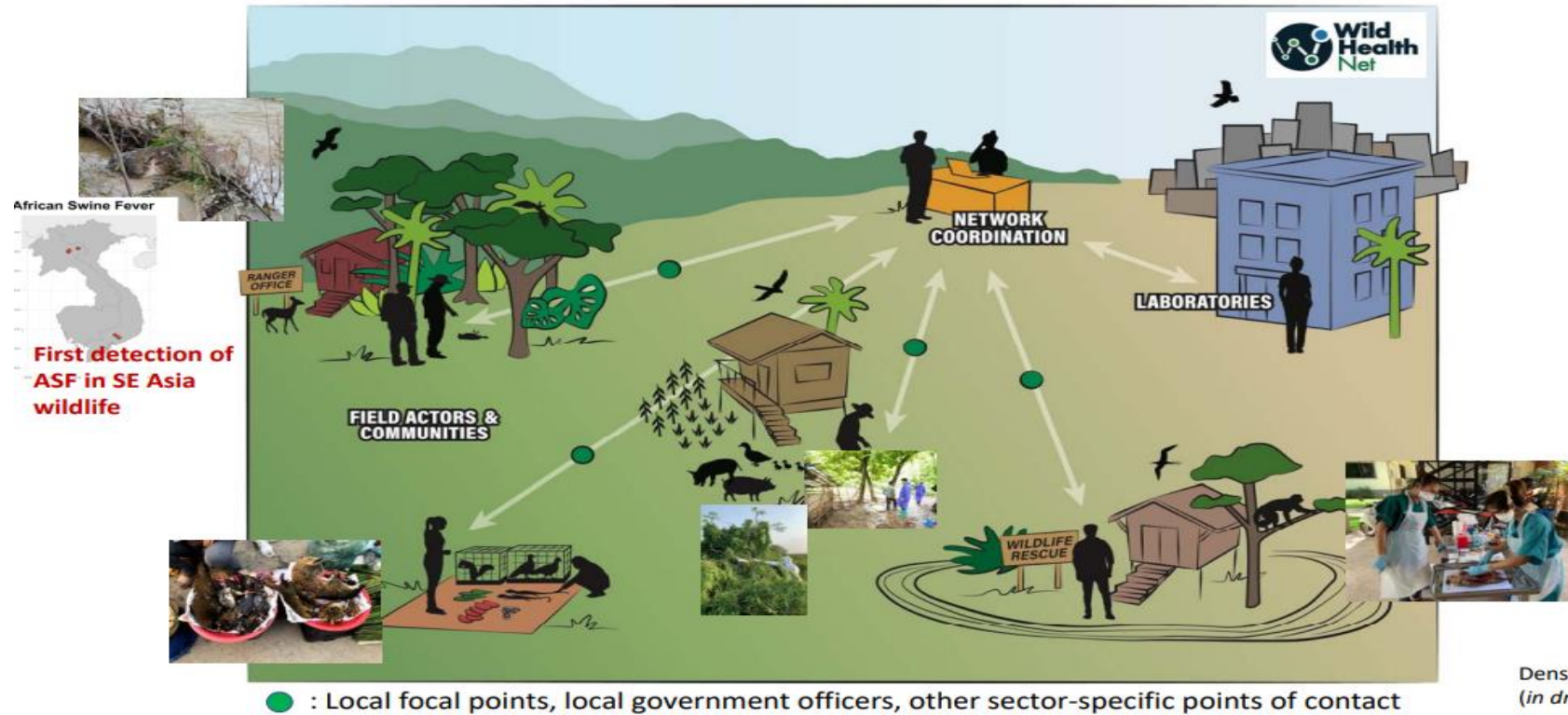
Linking with global reporting system

- *Brief situation on submission to WAHIS and constraints*
 - OIE-WAHIS (OIE World Animal Health Information System) is a unique comprehensive database through which information on the animal health situation worldwide is reported and disseminated throughout the world. OIE-WAHIS data reflects the information gathered by the Veterinary Services from OIE Members and non-Members Countries and Territories on OIE-listed diseases in domestic animals and wildlife, as well as on emerging diseases and zoonoses.
 - *OIE wildlife focal point in the country will collect the data and report for annual report, 6 month report and outbreak situation through the country CVO*
- *Briefly describe link to national or exchange of info between various data streams, if any*



Networks at country level

- List of various platforms of wildlife health/disease networks in the country and brief description



Denstedt et al.
(in draft)



Capacity Building

- *What specific trainings have your agencies conducted or attended to enhance wildlife disease surveillance?*
 - TRAINING MANUAL ON WILDLIFE DISEASES OUTBREAK INVESTIGATIONS
 - Biosafety and Biosecurity for working with the wildlife sample
 - Training on species identification for bats and rodents
 - Training on Standardizing data collection (SMART for Health) and management (WHIP)
 - Training on wildlife necropsy and sample collection
- *Please identify top 3 priority topics for training you need in the next 12 months*
 - ✓ Capacity building for Wildlife disease diagnosis at the laboratory such as monkey pox , corona virus
 - ✓ Strengthening the surveillance activities
 - ✓ Capacity building for in country net works

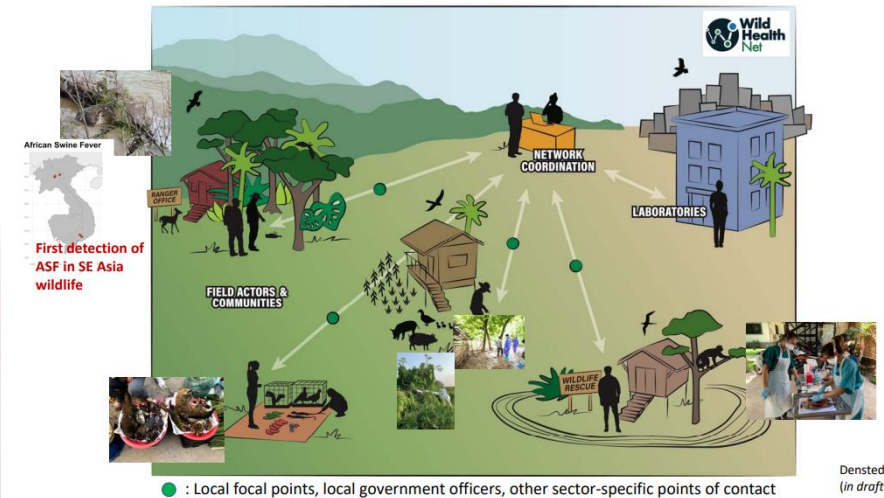
Training members of Network





Future activities

- *List 3 priority activities relating to wildlife health in your country over 2022-2023*
- *Operationalize the wildlife disease surveillance*
- *risk assessment at wildlife-domestic animals interface*
- *Building capacity for the surveillance network and laboratory*
- *Data analysis and sharing information system*
- *Procurement support: reagents, kits, and equipment*



Denstedt et al. (in draft)

Note: Please feel free to share success stories and/or best practice!

My acknowledgments go to internal government partner , local authorities, community peoples, and international donor who provide with the funding support for the activities conducted with the wildlife health in the country