



Non SEACFMD Countries Country Presentation FMD Situation and its Prevention & Control

Republic of Korea

Sang-Ho Cha

Head of FMD OIE Laboratory

Animal and Plant Quarantine Agency

FMD situation in 2021

- Temporal distribution – graphs (with number of outbreaks on ‘Y’ axis and Months on ‘X’ axis)
 - No outbreak
- Spatial distribution on maps
 - No outbreak
- Serotype distribution on maps or in bullet points
 - No outbreak
- Major epidemiological changes if any
 - O/ME-SA/Ind-2001e in Jan, 2019 were detected. We have not any more FMD cases.
 - We have no evidence for live virus circulating in Republic of Korea.

Key FMD Prevention and Control strategies

• Prevention

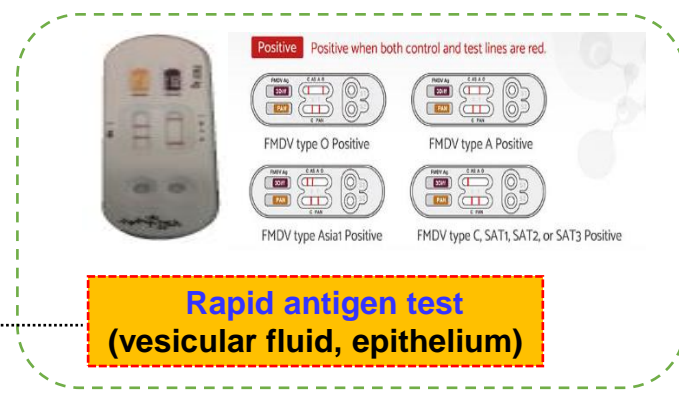
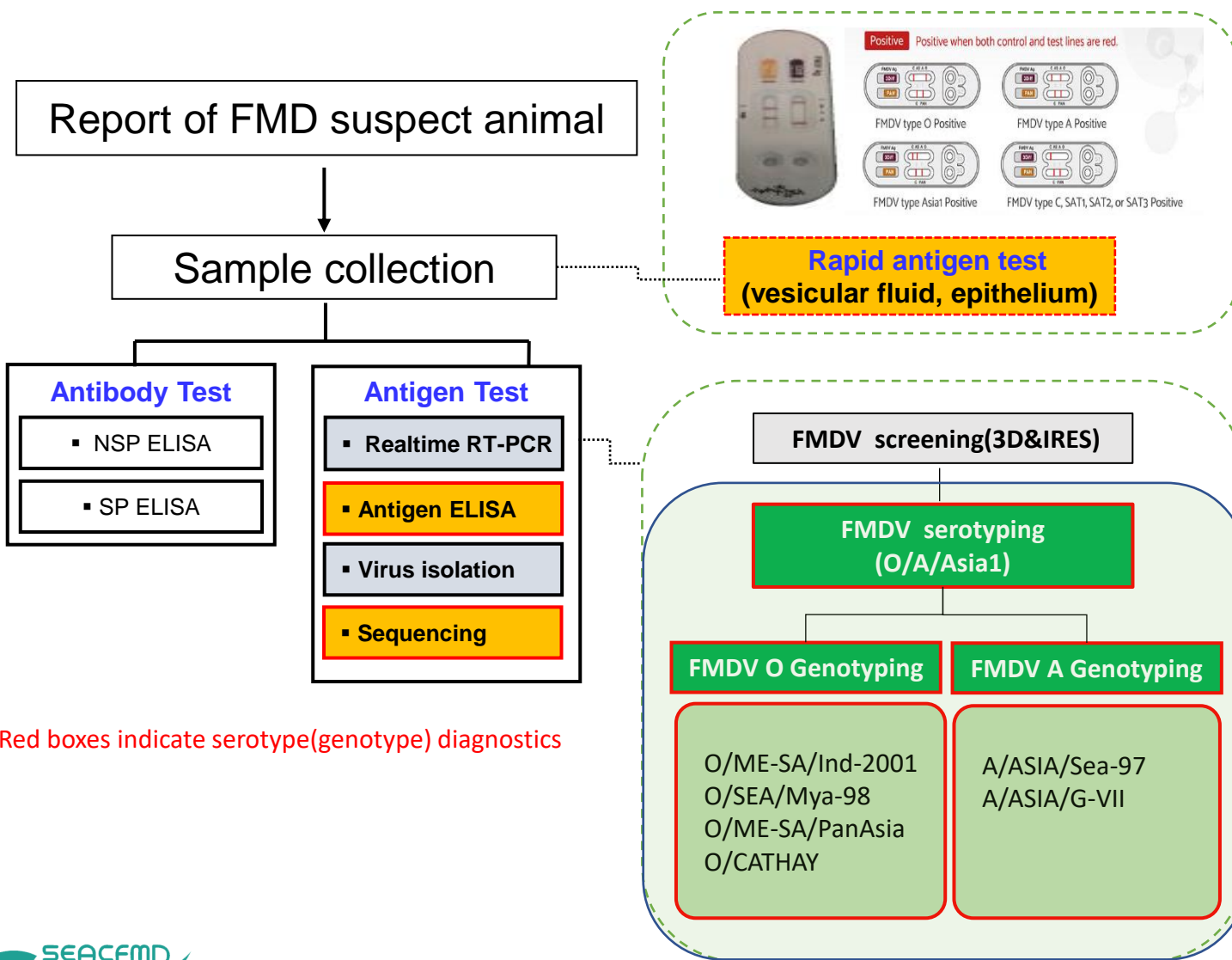
- Mandatory vaccination
- Intensive serological surveillance (SP/NSP test over 1.2 million heads)
- Reinforced quarantine in national borderlines
- Strengthened farm and slaughterhouse bio-security

Diagnosis

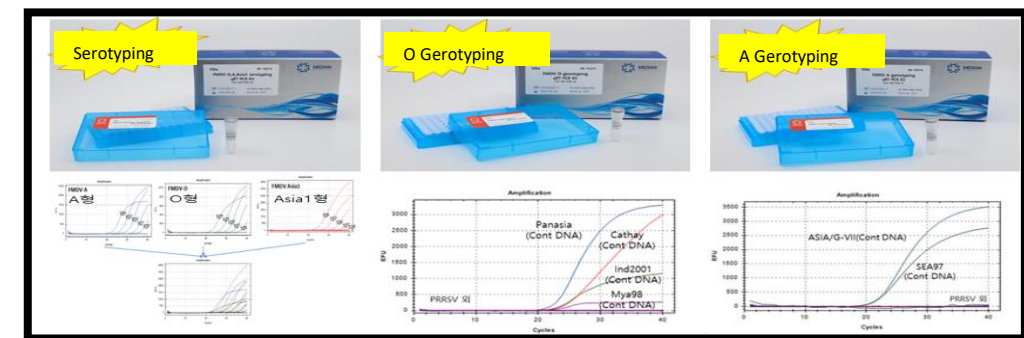
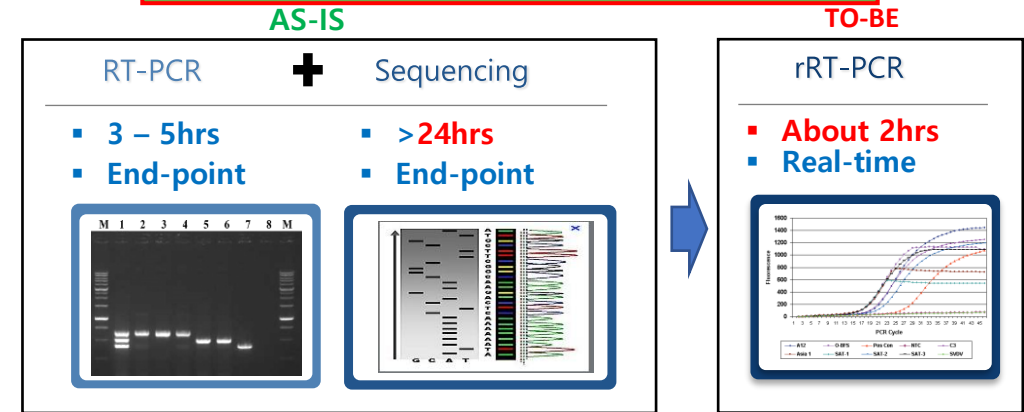
• Control

- Movement Control
- Standstill
- Stamping-out
- Disinfection
- Examination

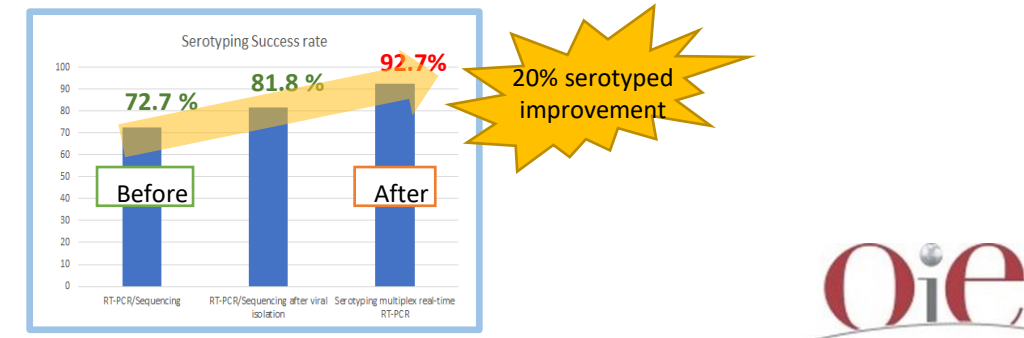
Diagnosis



Comparison of Serotyping methods



*Red boxes indicate serotype(genotype) diagnostics



Prevention



Quarantine in National borderlines

- X-ray inspection
- Quarantine detector dogs
- Disinfection mats and chambers
- Antigen monitoring



Thorough hygiene management in loading/unloading livestock

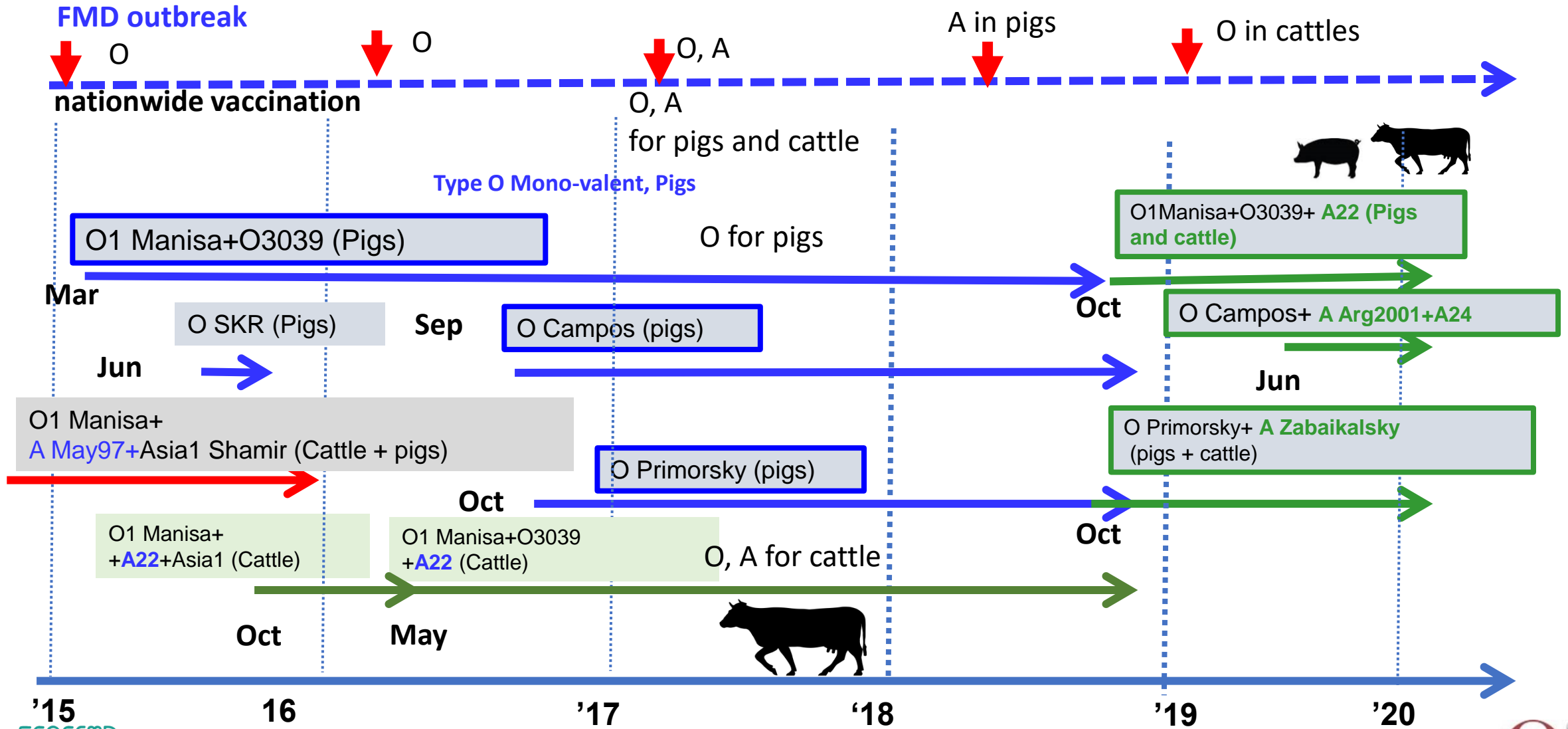


Vaccination and Serological surveillance

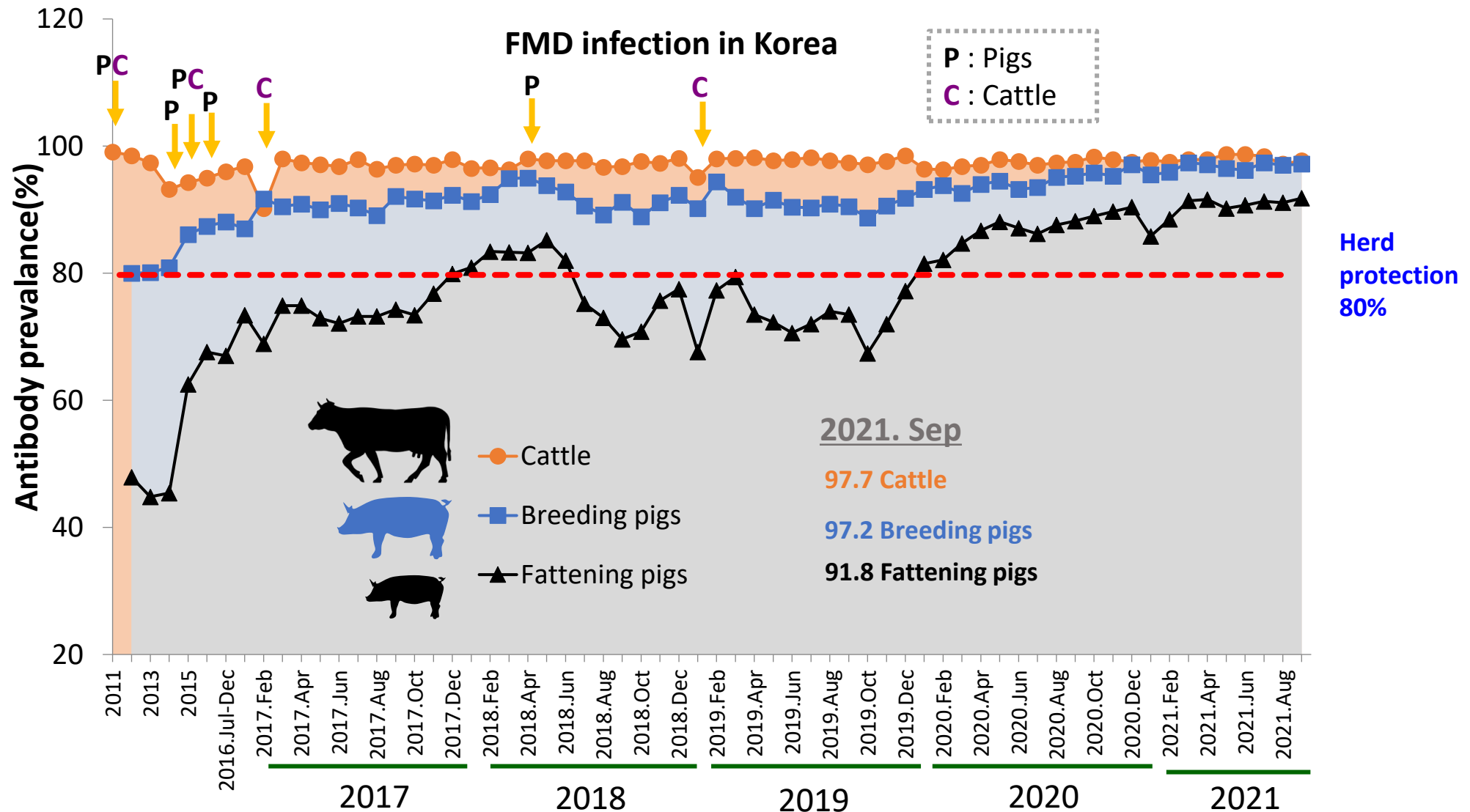


Disinfection when entering and leaving the slaughterhouse

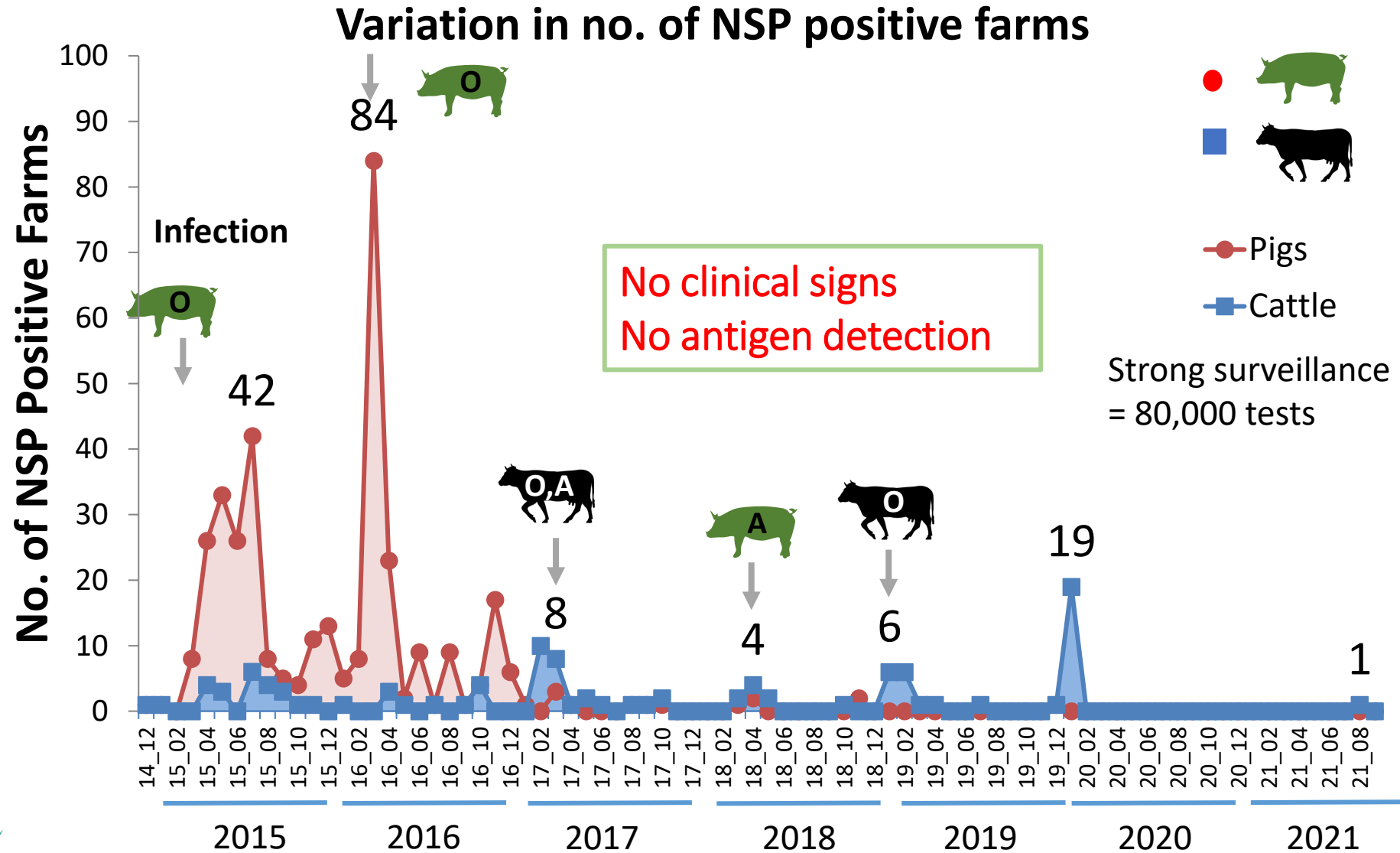
FMD vaccines used in Korea



Type O-SP antibody positive rate for PVM in Korea



Chronological reduction in no. of NSP positive farms during sero-surveillance



Control

Movement Control

First response teams carry out
Movement control



The relevant officials perform
Cleaning and disinfection on the site



The first response teams are under
the mission until stamping-out is
completed



Disinfection



Main street



Near to farms



Interior farms

Stamping-out





Thank You