



WORLD ORGANISATION FOR ANIMAL HEALTH
Protecting animals, preserving our future

Dr Keith Hamilton

Head of the Preparedness and
Resilience Department
OIE Headquarters
Paris, France

OIE Webinar World Wildlife Day

Global wildlife health

3 March 2022

The OIE and wildlife

Spotlight on the World Organisation for Animal Health (OIE)



Why is the **OIE** concerned about **wildlife**



Ecosystems depends on **biodiversity**



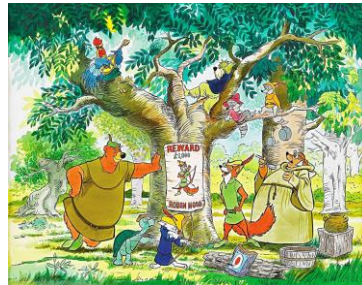
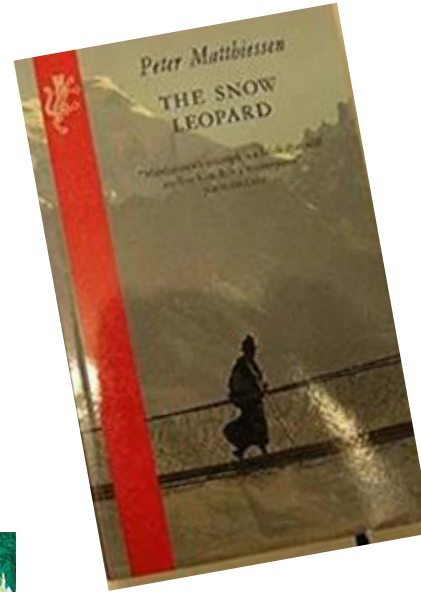
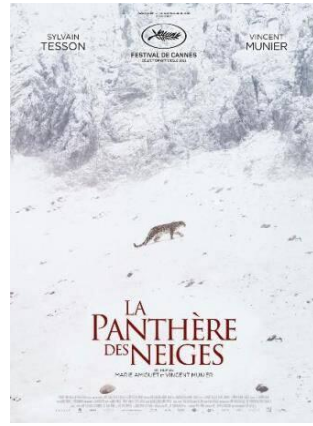
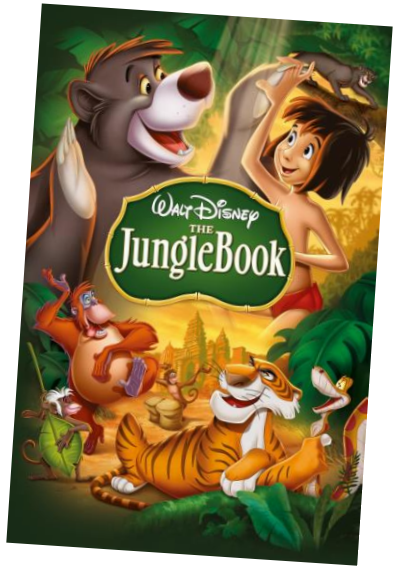
Wildlife support livelihoods



Mental, social and spiritual well-being



Contribution to education



Wildlife current situation

88.8% of the species on Earth are animal species.

The animal kingdom is the most biodiverse kingdom on the Planet

In the last 50 years, an average of 68% decrease in population sizes of mammals, birds, amphibians, reptiles and fish.

40% of the world's amphibians; 25% of its mammals; and 14% of its birds are threatened with extinction.



Life on Earth: the distribution of all global biomass

Biomass is measured in tonnes of carbon. The global distribution of Earth's biomass is shown by group of organism (taxa).

Global biomass: 546 billion tonnes of carbon

Plants

450 billion tonnes carbon
82.4% of total biomass



Bacteria
70 billion tonnes carbon
12.8% of total biomass



Fungi
12 billion tonnes carbon
2.2% of total biomass



Archaea
(single-cell microbes)
8 billion tonnes carbon
1.5% of total biomass



Protists
4 billion tonnes carbon
0.7% of total biomass

Viruses
0.2 billion tonnes carbon
0.04% of total biomass

Animal biomass: 2 billion tonnes of carbon (0.4% of total biomass)

Arthropods

1 billion tonnes carbon
42% of animal biomass



Fish

0.7 billion tonnes carbon
29% of animal biomass



Annelids
0.2 billion tonnes
8% animal biomass



Molluscs
0.2 billion tonnes
8% animal biomass



Cnidarians
0.1 billion tonnes carbon
4% of animal biomass



Livestock
0.1 billion tonnes carbon
4% of animal biomass



Humans
0.06 billion tonnes carbon
2.5% of animal biomass
0.01% of total biomass

Wild mammals
0.007 billion tonnes carbon
0.3% of animal biomass

Wild birds
0.002 billion tonnes carbon
0.08% of animal biomass

Nematodes
0.02 billion tonnes carbon
0.8% of animal biomass

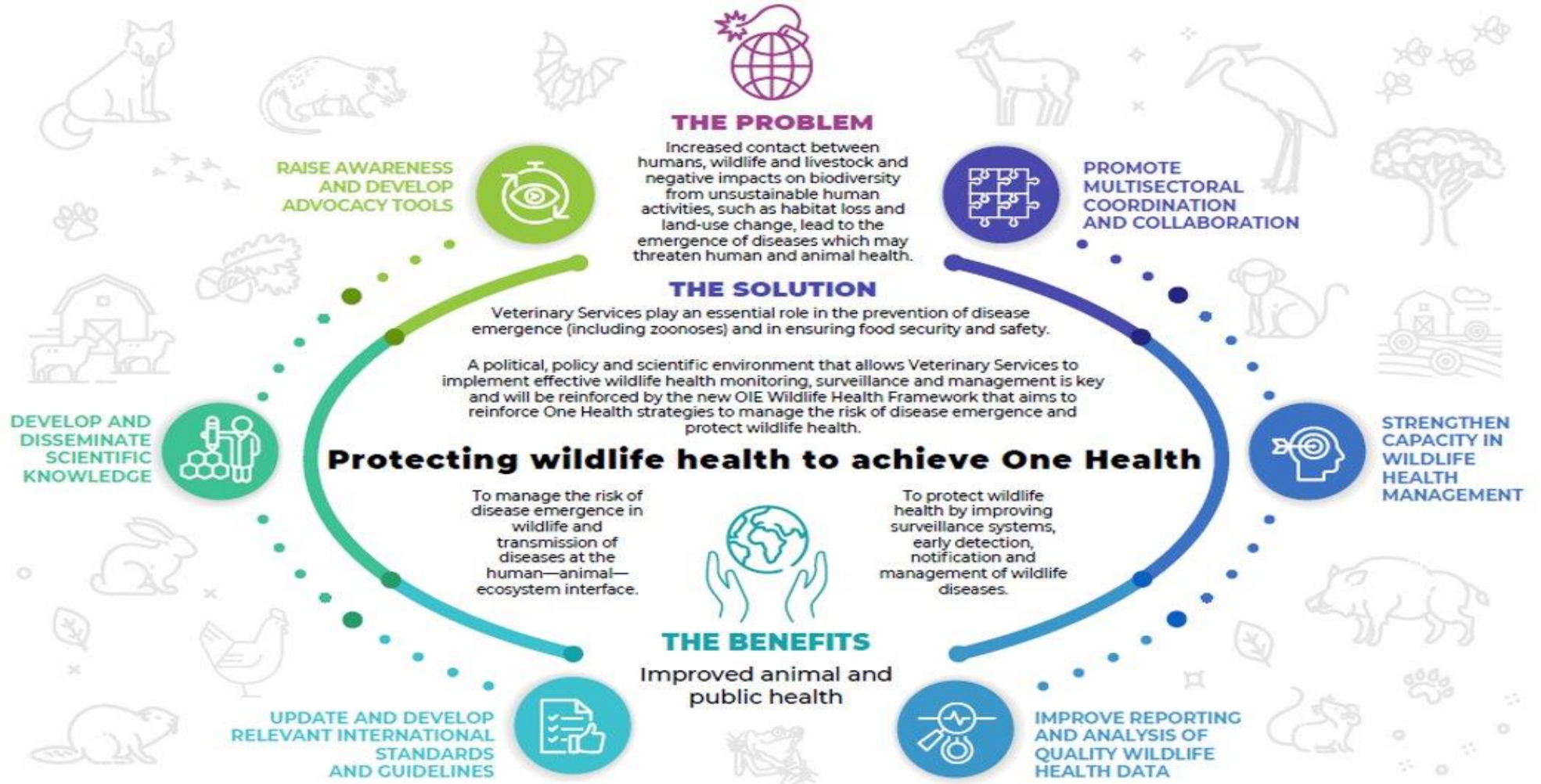


Data source: Bar-On, Y. M., Phillips, R., & Milo, R. (2018). The biomass distribution on Earth. *Proceedings of the National Academy of Sciences*. Icons from Noun Project.

OurWorldinData.org – Research and data to make progress against the world's largest problems.

Licensed under CC-BY by the authors Hannah Ritchie and Max Roser.





The approach Embrace a holistic systems-based approach to One Health to seek solutions that optimise health outcomes for animals, humans and the environment





Organisation
Mondiale
de la Santé
Animale

World
Organisation
for Animal
Health

Organización
Mundial
de Sanidad
Animal



**Well we should all be concerned about wildlife.
Wildlife are essential for life on earth.**



WORLD ORGANISATION FOR ANIMAL HEALTH
Protecting animals, preserving our future

Other interesting images ...

