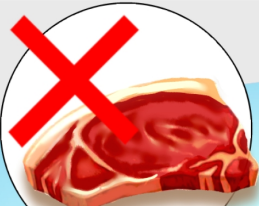
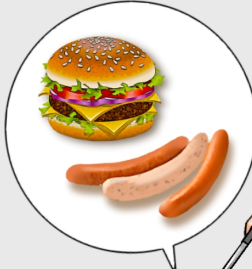
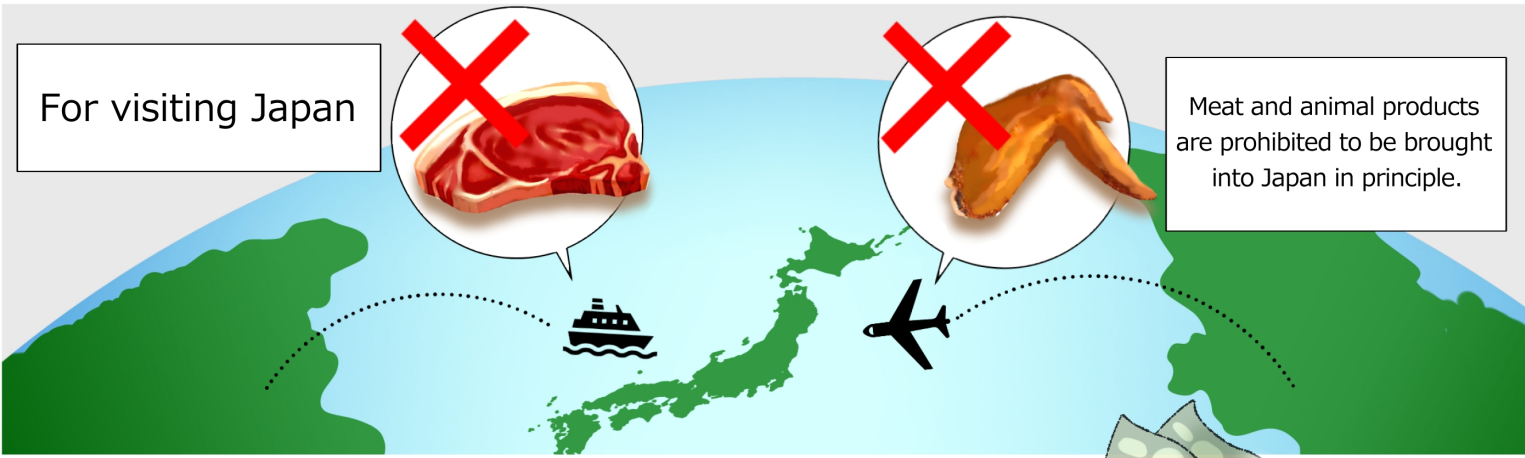


For visiting Japan



Meat and animal products are prohibited to be brought into Japan in principle.



If you bring foods that contain even for a small amount meat,



you could get punishments.

Unwashed workwear, boots and equipment that you've used in areas where domestic animals are kept



Do not bring them into Japan.



In case of introducing livestock products without passing import inspection, persons shall be punished with imprisonment for a term of up to 3 years or a fine of up to 3 million yen (up to 50 million yen for businesses corporators).

If you bring illegal animal products, you can also be denied permission for landing in Japan.

Ministry of Agriculture, Forestry and Fisheries of Japan, Animal Quarantine Service
<https://www.maff.go.jp/aqs>

