



**Saša Ostojić**

Head of Crisis Management Center  
-Veterinary Directorate of Serbia-

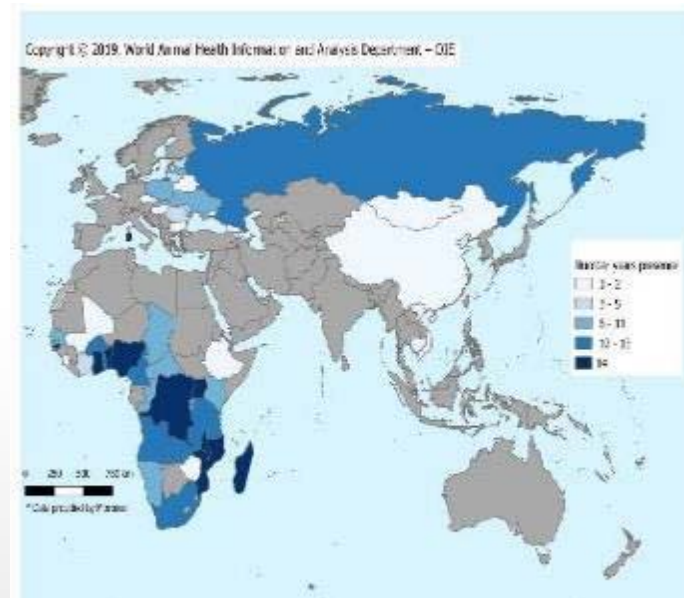
# MEASURES TO PREVENT ASF INTRODUCTION SERBIAN EXPERENCES

BORDER CONTROL TO PREVENT ASF INTRODUCTION

# IN ADDITION TO GLOBAL FRAMEWORK

**T**he continuity in monitoring of the reports with the traceability in time and location of the occurrence of outbreaks is a key point in determining of priority criterias for risk analysis in terms of confirming of relevance of the available data.

In relation to the presumed or confirmed cause of the disease and the **available information** pointing to the extent of infected area and the increased number of cases or sudden occurrence at a new location, provides a hypothesis made about the time and length of the possible presence of the causative agent on the infected farm or inside the hunting ground.

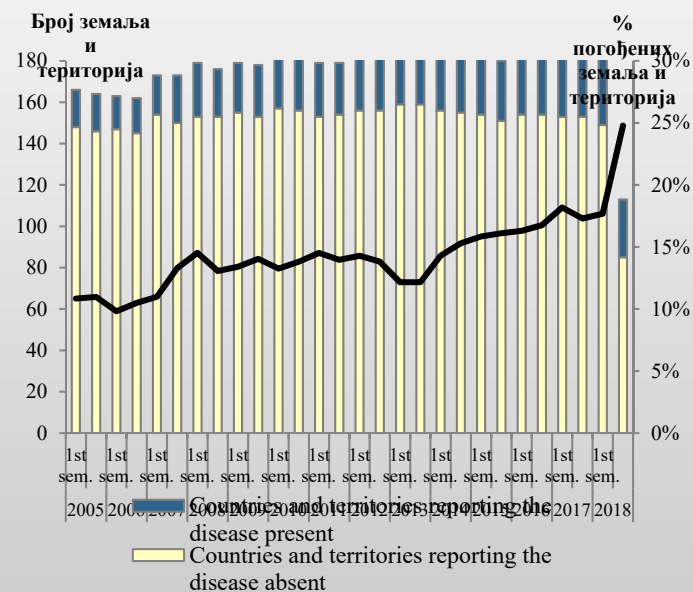
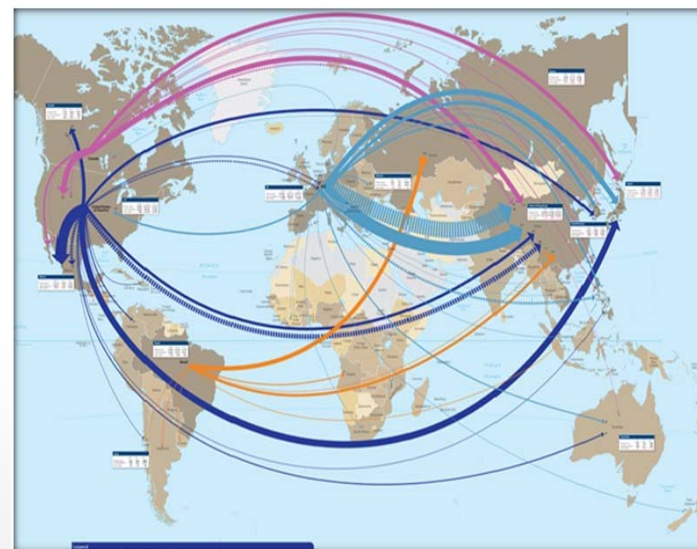


# INCREASED RISKS

Based on the **relevant parameters** out of the reports of the disease occurrence, it can be assumed with certainty whether the spread of the disease was due to uncontrolled trade or movement.

However, tracing backwards **leads to further delay** which needs an additional time for epidemiological inquiry of the event.

As the result, the effectiveness of the control of the movement of live pigs, pork meat, pork products and by-products of pork origin within the affected country in relation to the frequency of ASF outbreaks for these reasons, **indicates the lack of adequate control** of traffic and trade within the transit and transportation of consignments that can transmit the virus outside of the Country.



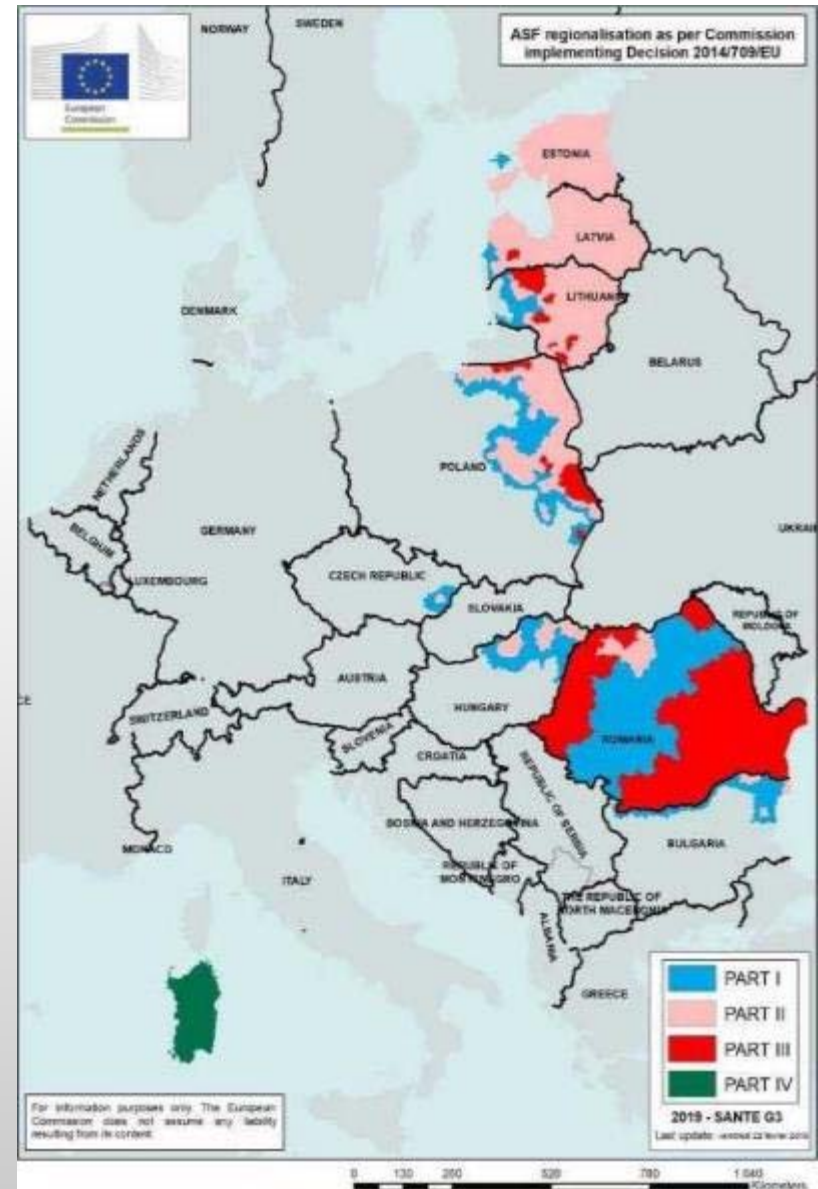
# EU REGIONALIZATION / PROBLEMATICS

- Although the control of cross-border traffic in European countries is performed compulsorily, it is often provided with varying success

The international trade between EU member states is carried out consisting **the related legislation** with the certain restrictions in applying the principles of regionalization, which recognize the areas free or affected of ASF, in order to relax the intracomunity trade.

This sometimes result on the **consequences of failures** in registering the cause and the origin of the virus only after the onset and spread of the disease.

However, **geting experiences** from reliable sources might be of great importance, comparing the possible introduction of ASFV in such ways into the other unaffected countries.



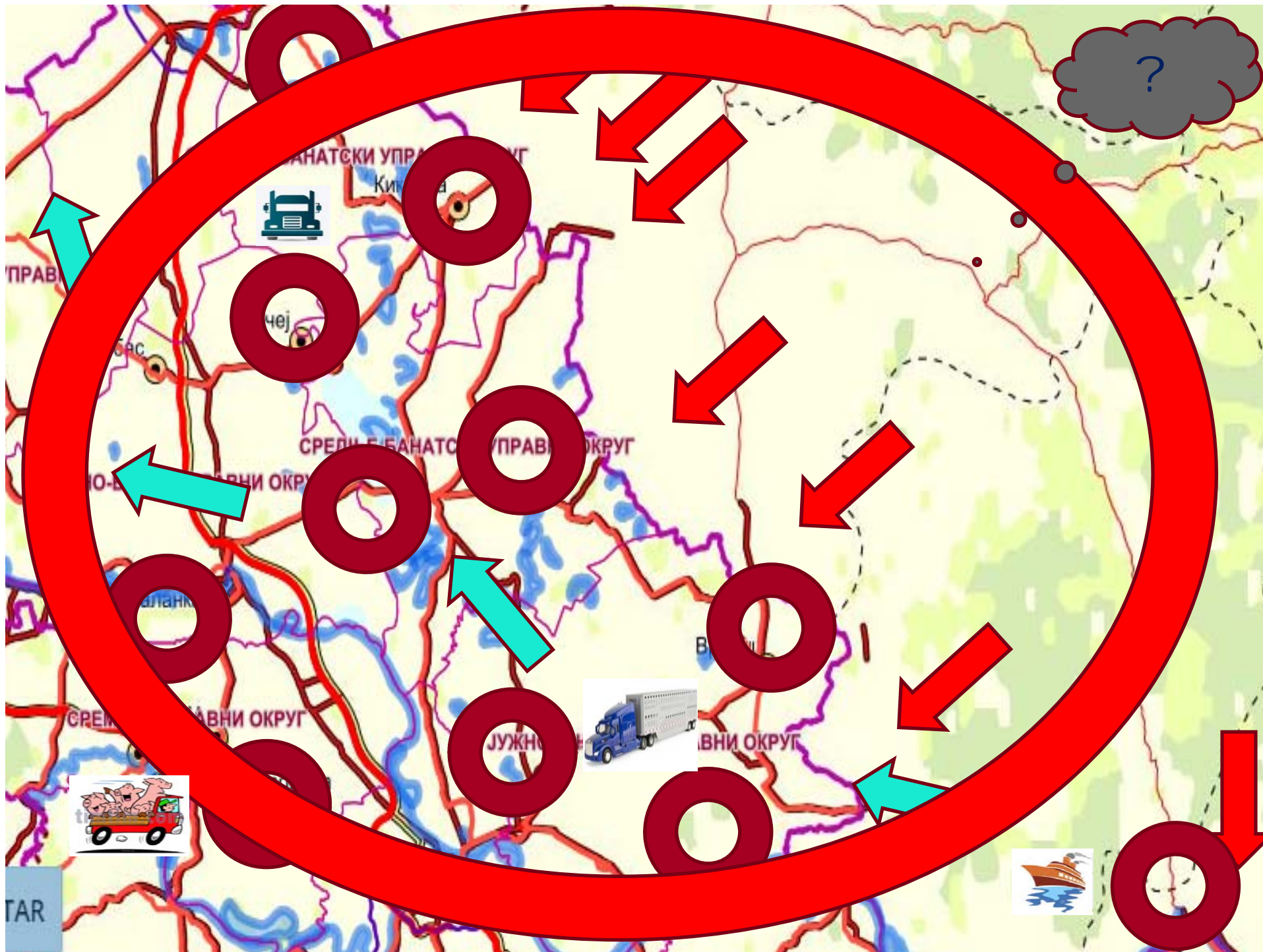
# EU MEMBER STATES EPIDEMICS

## ANIMAL DISEASE NOTIFICATION SYSTEM: OUTBREAKS per DISEASE

 Ref. Area(2019)3818915 - 14/06/2019

From 03/06/2019 to 09/06/2019

Disease	Country	Latest ADNS Dispatch Date	N° of cases/outbreaks from 1 January 2019	N° of cases/outbreaks (03/06/2019 to 09/06/2019)
			BY ADNS DISPATCH DATE *	
ASF	ITALY	13/02/2019	16	-
	LITHUANIA	06/06/2019	2	2
	POLAND	04/06/2019	4	1
	ROMANIA	06/06/2019	117	10
		Total N° of outbreaks		139
A.S.F.W.B.	BELGIUM	03/06/2019	469	4
	BULGARIA	06/06/2019	12	1
	ESTONIA	06/06/2019	48	1
	HUNGARY	03/06/2019	715	17
	ITALY	17/04/2019	23	-
	LATVIA	07/06/2019	146	2
	LITHUANIA	07/06/2019	263	9
	POLAND	07/06/2019	1262	30
	ROMANIA	06/06/2019	271	7
		Total N° of cases:		3209



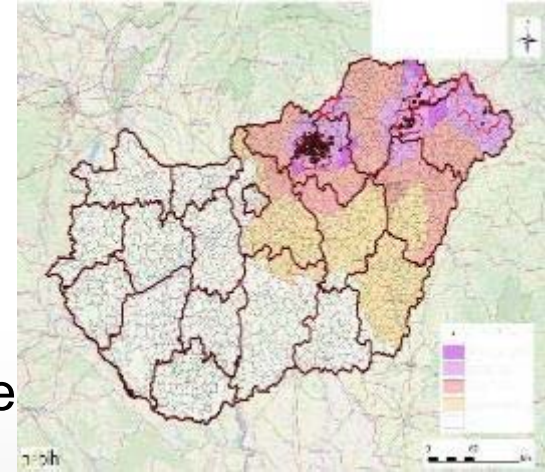
# SERBIA / current situaton

The eastern part of the Serbia is bordering to three ASF affected EU Countries: Hungary, Romania and Bulgaria.

## Hungary:

Although the disease is present since 2018 only in the wild boar population, a significant increase in the number of cases in the expanded infected area has been recorded In recent months. Since the infected area with wild pigs is geographically isolated and distant from the farms, there has been no spread of the disease to domestic pigs. However, a large number of new cases continuously increase the possibility of further infection.

**HAZARD:** the border crossing with Hungary is one of the two border crossings with the highest traffic frequency that includes the transit through Serbia towards the southern part of Europe, Turkey and Asia.



# SERBIA / current situaton

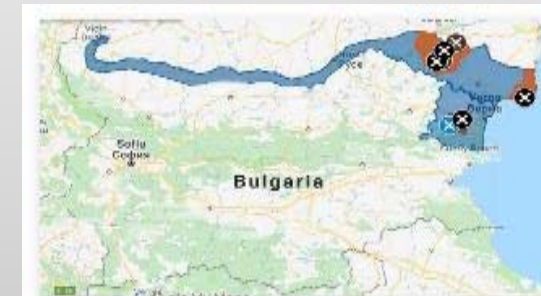
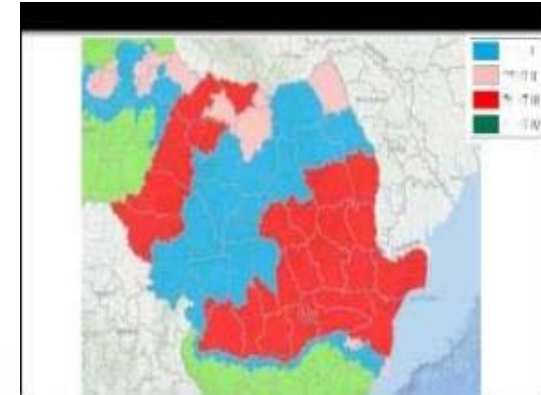
- Romania:
- The first case was registered in 2017.
- ASF is continuously present in the population of wild boars and domestic pigs with a large number of outbreaks and cases.

One of the recent outbreaks occurred in the bordering area to Serbia

- ***HAZARD: illegal movements of pigs, uncontrolled trade and trade in pork, pork products***

- Bulgaria:
- ASF was recorded in domestic and wild pigs, since 2018. There were no cases or outbreaks near Serbian border.

- ***HAZARD: trade and increased wild boar population***





---

# NATIONAL VETERINARY LEGISLATION

- Law on Veterinary Matters
- Regulation on the establishment of early detection, diagnosis, prevention, stop spreading and eradication of ASF, as well as the ways of their implementation
- Regulation on the List of Particularly Infectious Animal Diseases and the Lists of Infectious Diseases for Mandatory Reporting, as well as the ways of their notification
- Animal Health Protection Measures Program (Annual Regulation)
- Contingency plan and Operative Manual on ASF

# LAW ON VETERINARY MATTERS

- **CHAPTER XI: VETERINARY-SANITARY CONTROL AND INTERNATIONAL TRADE (Articles 120-130)**

- Border Veterinary-Sanitary Control
- Requirements for Importation and Transit Consignments
- Issuing of Importation and Transit Permits
- Quarantine for Imported animals
- Threat of Entry of a Infectious Disease into the Republic of Serbia :

In case of a threat of the entry of a notifiable infectious disease, into the territory of the Republic of Serbia, or it can be transmitted through imported or consignments in transit, the Minister may order:

- 1) a ban or limitation on the import, export or transit of animals, products of animal origin, food of animal origin, animal feed and related items;
- 2) control of the trade of animals, products of animal origin, food of animal origin, animal feed and related items in endangered border area including roads, bridges and ferry boats;
- 3) disinfection of persons and vehicles at crossing borders in the endangered area;

# SERBIA /CHALANGES IN COMBATING ASF

## -National legislation supported by the State:

*Order on the of measures for preventing of entry of ASF into the Republic of Serbia (including the measures to be applied within the established risk areas);*

*- Government's Conclusion on the engagement of the all Ministries in the implementation of measures for ASF control In Serbia.*

- National Crisis Center, as wel as Regional / Local Crisis Centers are established and enforced in bordering districts to Hungary,Romania and Bulgaria.

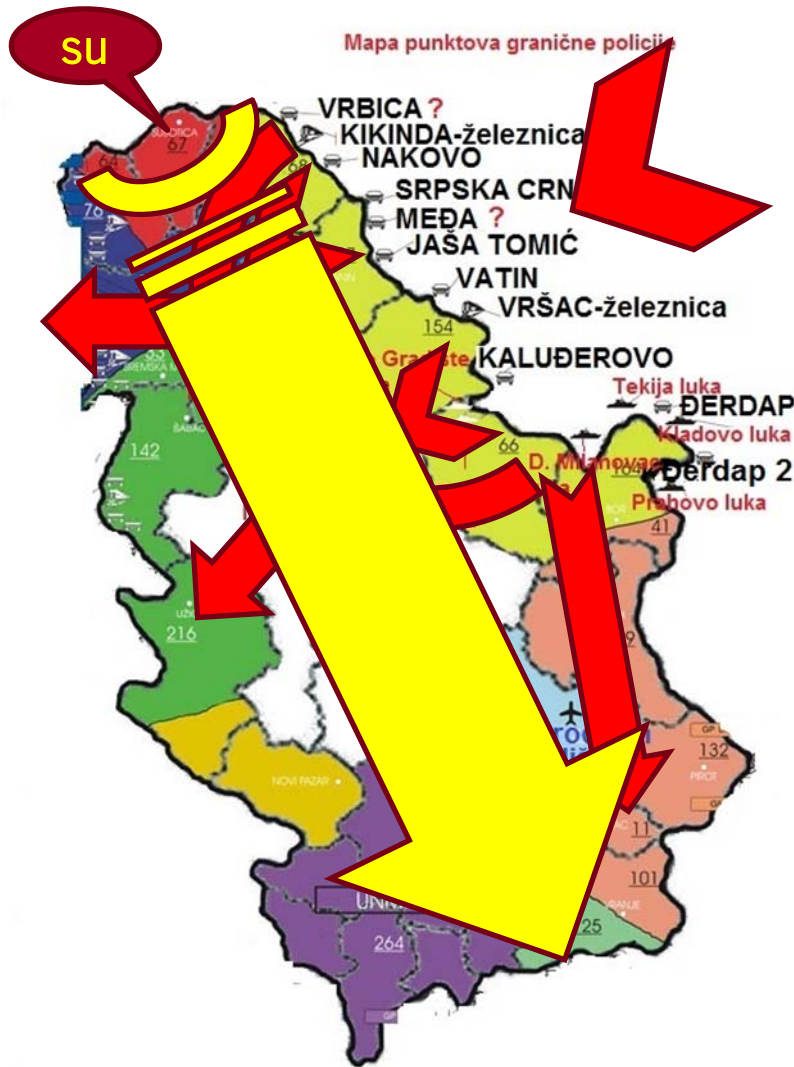
Acivities of RCC are carried out within the framework of the supervision of veterinary services, state bodies and institutions, as well as local self-governments whose representatives are members of these centers.

- The active and passive surveillanc in the population of domestic and wild boar is carried out continuously. All found dead and hunted wild boars in high risk areas must be tested on ASF.

- Categorization of pig farms based on biosecurity measures is carried out together with the control of movements and identification of pigs and holdings



# BORDER INSPECTION POSTS



# CROSSINGS AND HARBOURS



Category 1  
ONLY FOR DISPOSAL



# BORDER CONTROL / DIFFICULTIES

The main difficulties in sustaining and maintaining the efficiency of cross-border control at border crossings are generally reflected in the scope of consistent implementation of the rules and legislation, but often limited within the jurisdiction of certain services and relevant circumstances, especially in periods of increased traffic, with the control of products of uncertain origin carried out on the basis of risk analysis on the spot, provided by custom service by themselves.



# BORDER CONTROL / DIFFICULTIES

The major problem could exist in a lack of the control at the so-called small border crossings and checking points, where there are not police, customs and veterinary services present all the time, with no strict control of vehicles that can transmit a virus via the product and food for personal consumption.

In addition, the control of ships and boaths and the air traffic as well, decisively require an specialty integrated kitchen waste disposal systems as a particularly important segments which need an special engagement in a consisting aspects of conducting of traffic control.



REPUBLICA SRBIJA / REPUBLIC OF SERBIA /  
MINISTARSTVO POLJOPRIVREDE, ŠUMARSTVA I VODOPRIVREDE  
- UPRAVA ZA VETERINU -  
MINISTRY OF AGRICULTURE, FORESTRY AND WATER MANAGEMENT - VETERINARY DIRECTORATE

**AFRIČKA KUGA SVINJA / AFRICAN SWINE FEVER**

<p><b>UPOZORENJE</b></p> <ul style="list-style-type: none"><li>- AFRIČKA KUGA SVINJA JE VEOMA OPASNA ZARAZNA BOLEST SVINJA KOJU IZAZIVA VIRUS</li><li>- OBOLJEVAJU SVINJE SVIH KATEGORIJA</li><li>- UGINU SVE OBOLELE ŽIVOTINJE</li><li>- VIRUS AFRIČKE KUGE SVINJA NE PREDSTAVLJA OPASNOST ZA LJUDE I DRUGE VRSTE ŽIVOTINJA</li><li>- NEMA LEČENJA</li><li>- NEMA VAKCINE</li></ul>	<p><b>ZABRANJENO / FORBIDDEN</b></p> <p>OPASNI IZVORI ZARAZNE AFRIČKE KUGE SVINJA: SVINJSKO MESA I PROIZVODI OD SVINJSKOG MESA I LOVAČKI TROFEJI SVILJAZI I KANJKA.</p> <p><b>STOP</b></p> <p>NO PORK MEAT AND PORK MEAT PRODUCTS AND HUNTING TROPHIES OF WILD PIG</p>	<p><b>OBAVEZNO</b></p> <ul style="list-style-type: none"><li>- PRILIVITE CARAMKU SVE KOLIČINE SROVOG SVINJSKOG MESA I PROIZVODA OD SVINJSKOG MESA KOJE POSELUJETE</li><li>- SROVO SVINJSKO MESO I PROIZVODI OD SVINJSKOG MESA NE MOŽETE UNETI NA TERITORIJU REPUBLIKE SRBIJE</li><li>- SVU KOLIČINU SROVOG SVINJSKOG MESA I PROIZVODA OD SVINJSKOG MESA ULAČITE U SPECIJALNO OBLJEŽEN KONTEJNER</li><li>- KONTEJNERI SVE SVINJSKE SVINJSKO MESO TRAJAVALI NA TEMPERATURI VIŠOJ OD 80°C MOŽETE UNETI NA TERITORIJU REPUBLIKE SRBIJE</li><li>- LOVAČKE TROFEJE DIVLJIH SVINJA NE MOŽETE UNETI NA TERITORIJU REPUBLIKE SRBIJE</li></ul>
<p><b>WARNING</b></p> <ul style="list-style-type: none"><li>- AFRICAN SWINE FEVER IS VERY CONTAGIOUS VIRAL DISEASE OF SWINE</li><li>- IT IS DANGEROUS FOR ALL PIGS CATEGORIES</li><li>- MORTALITY IS VERY HIGH</li><li>- VIRUS OF AFRICAN SWINE FEVER DOES NOT PRESENT DANGER FOR PEOPLE AND OTHER SPECIES OF ANIMAL</li><li>- NO TREATMENT</li><li>- NO VACCINE</li></ul>		<p><b>MANDATORY</b></p> <ul style="list-style-type: none"><li>- REPORT TO THE CUSTOMS OFFICER ANY AND ALL QUANTITIES OF RAW PORK AND PORK PRODUCTS IN YOUR POSSESSION</li><li>- NO RAW PORK OR PORK PRODUCTS MAY ENTER THE TERRITORY OF THE REPUBLIC OF SERBIA</li><li>- ENTIRE QUANTITY OF RAW PORK AND PORK PRODUCTS MUST BE DISPOSED OF IN A SPECIALLY LABELLED CONTAINER</li><li>- CANS OF PORK PRODUCT TREATED AT THE TEMPERATURE HIGHER THAN 80°C MAY ENTER THE TERRITORY OF THE REPUBLIC OF SERBIA</li><li>- HUNTING TROPHIES OF WILD BOARS MAY NOT ENTER THE TERRITORY OF THE REPUBLIC OF SERBIA</li></ul>

# AWARENESS CAMPAIGNE

targeted to:

- Official vets
- Private vets
- Commercial farmers
- Small backyard farmers
- Traders / Middlemen
- Transporters
- Travellers/Agencies
- Hunters/assosciations
- Forestry services
- Local communities
- Medias
- Ministries/Institutions



© ~f<\$8#kF#2ke2^"~Qe~

- *To improve the level of preparedness of VS, put the early warning system in place;*
- *Educations and exercises, recognizing weaknesses and using experiences in strengthening of capacities;*
- *Facilities and available human resources, real estimation;*
- *Economic impact and funds evaluation, financial support at the moment;*
- *To define clearly priorities and goals, procedures and chain of command;*
- *To establish and obtain the coordination and cooperation between the institutions in all levels,*
- *To follow the rules and regulations;*
- *To rise public awareness and to provide available relevant information;*
- *Social impact, food safety and control*
- *Animal health protection and welfare, keep remember we are*



# Thank you for your attention



Saša Ostojić Dr vet spec  
sasa.ostojic@minpolj.gov.rs



**Oie**

**WORLD ORGANISATION FOR ANIMAL HEALTH**  
*Protecting animals. preserving our future*

12, rue de Prony, 75017 Paris, France  
[www.oie.int](http://www.oie.int)  
media@oie.int - oie@oie.int

