



Food and Agriculture Organization
of the United Nations

Emergency Management Centre for Animal Health



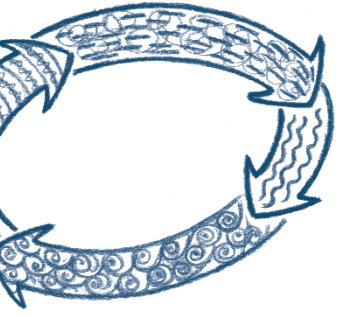
Emergency Management Centre
for Animal Health

GEMP

Good Emergency Management Practice: The Essentials



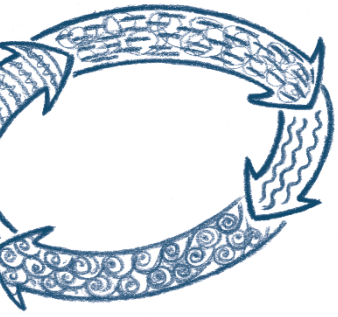
Emergency Preparedness Planning



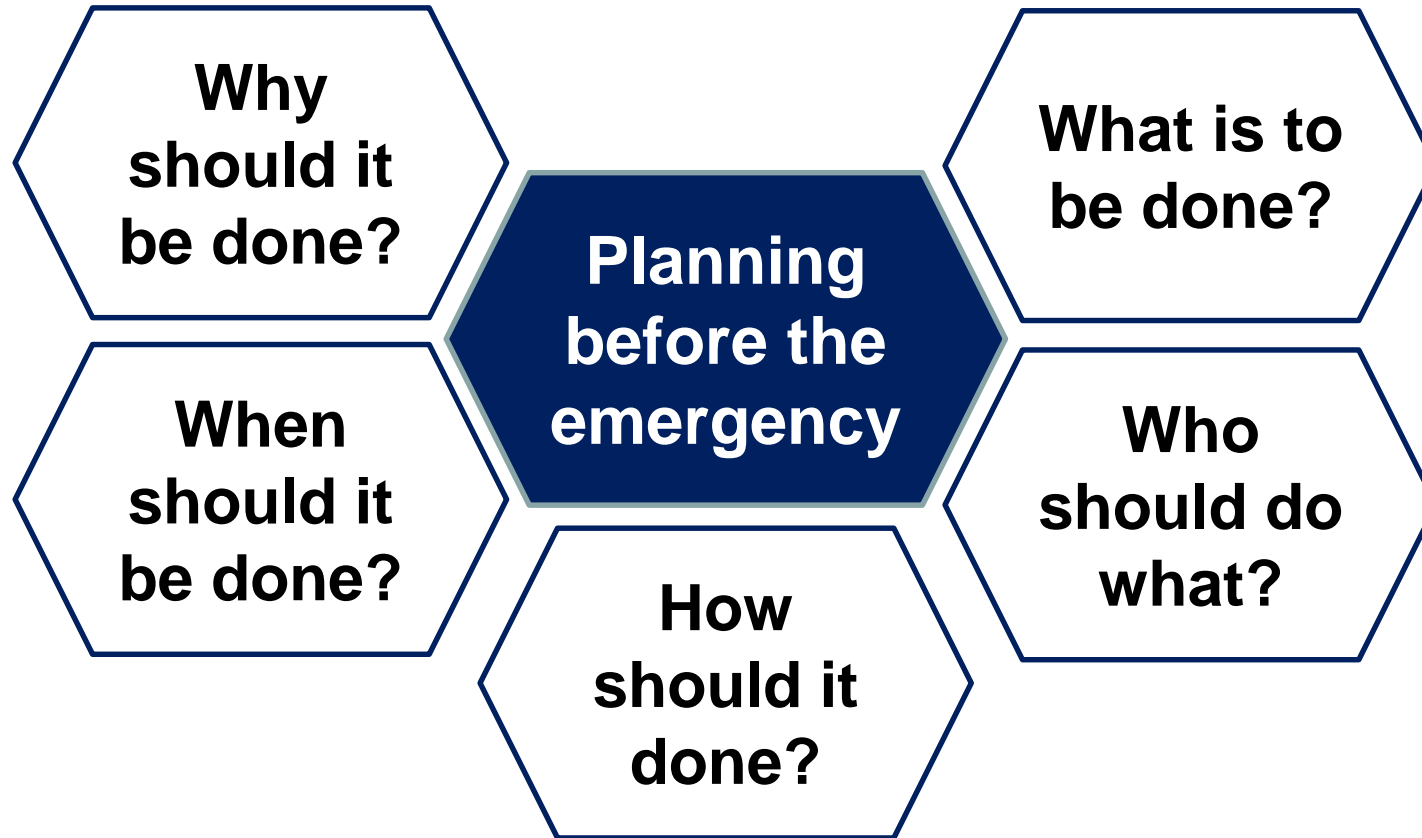
- Think and act **before** the crisis
- Address critical arrangements and approaches **in advance**
- Assess and build skills **beforehand**

All during peacetime!!!

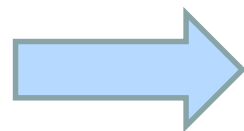




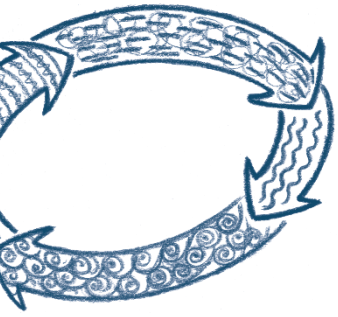
Planning before the emergency



Strengthen skills so that the emergency does not become a crisis.



Act during 'Peacetime'



Managing animal health emergencies: What is animal health emergency management?

Holistic organization and management

Responsibilities

Resources

Actions



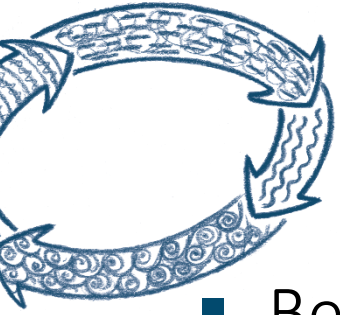
Institutional arrangements

Plans

Public

Private

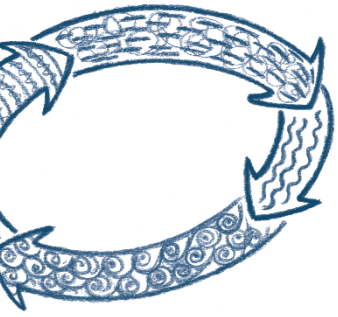
What is GEMP?



- Best management practices to **address animal disease emergencies**
- Emergency preparedness is an **ongoing process**
- The cycle of **good emergency management planning and disease control** includes preparedness, prevention, detection, response and recovery



Cycle of good emergency management planning and disease control



A tool that...



- Sets out in a **systematic** way the elements required for veterinary services to achieve preparedness for emergency animal diseases.
- Provides an **internationally accepted** systematic approach to emergency disease management.
- Defines **strategies** that reduce the economic and social impacts of animal disease outbreaks.

Available online in Arabic, Chinese, English, French, Russian, and Spanish

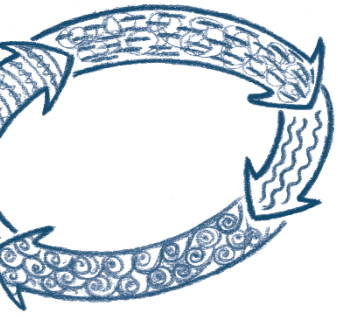
<http://www.fao.org/publications/card/en/c/68b14f27-5234-51f3-b46e-8ecea0029d9b/>



Why GEMP?

- Provides an opportunity for countries to **improve preparedness** for priority animal diseases, including zoonoses.
- Equips countries with a **reference tool**.
- Builds **capacity** for outbreak response.
- Provides a structured and coordinated approach to **incident coordination and management**.
- Establishes a **culture** of emergency management.

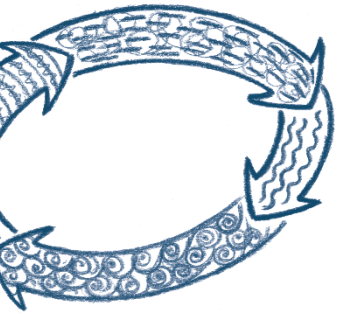




GEMP as a concept

- Holistic approach to management of disease emergencies.
- An expanding list of specific tools:
 - *GEMP: The Essentials* manual
 - Technical response SOPs
 - Risk communication guide
 - More to follow



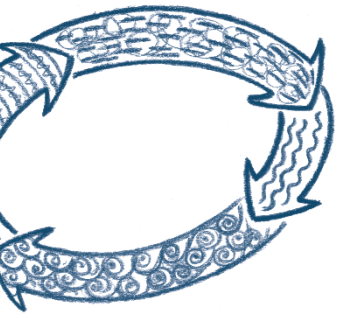


Animal health emergency management Emergency Management Cycle



5 actions

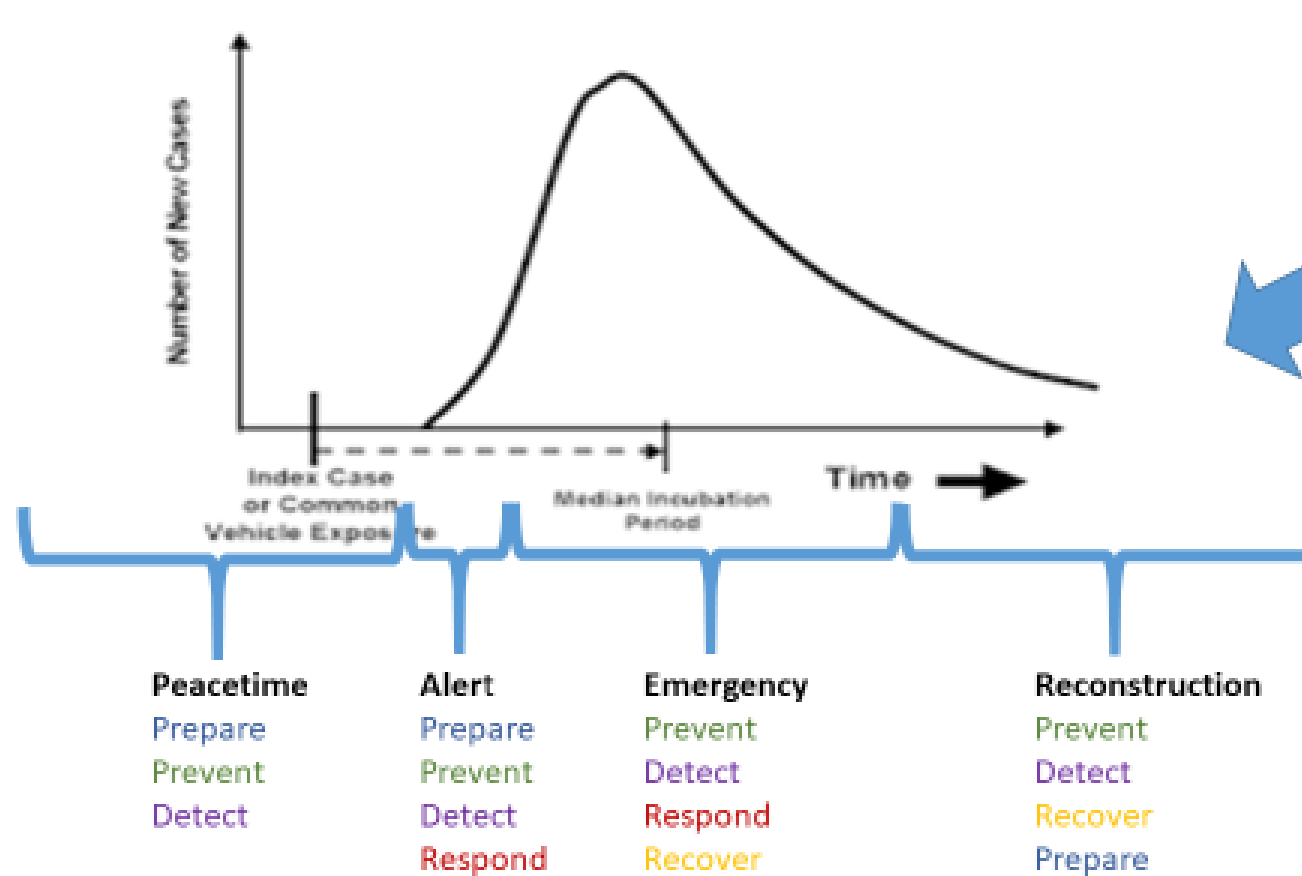
- Prepare
- Prevent
- Detect
- Respond
- Recover



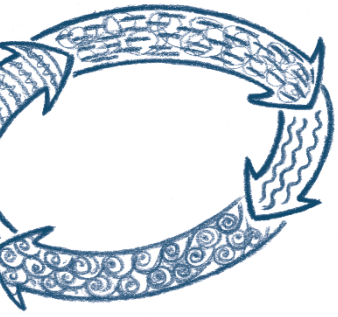
Animal health emergency management

The phases and actions

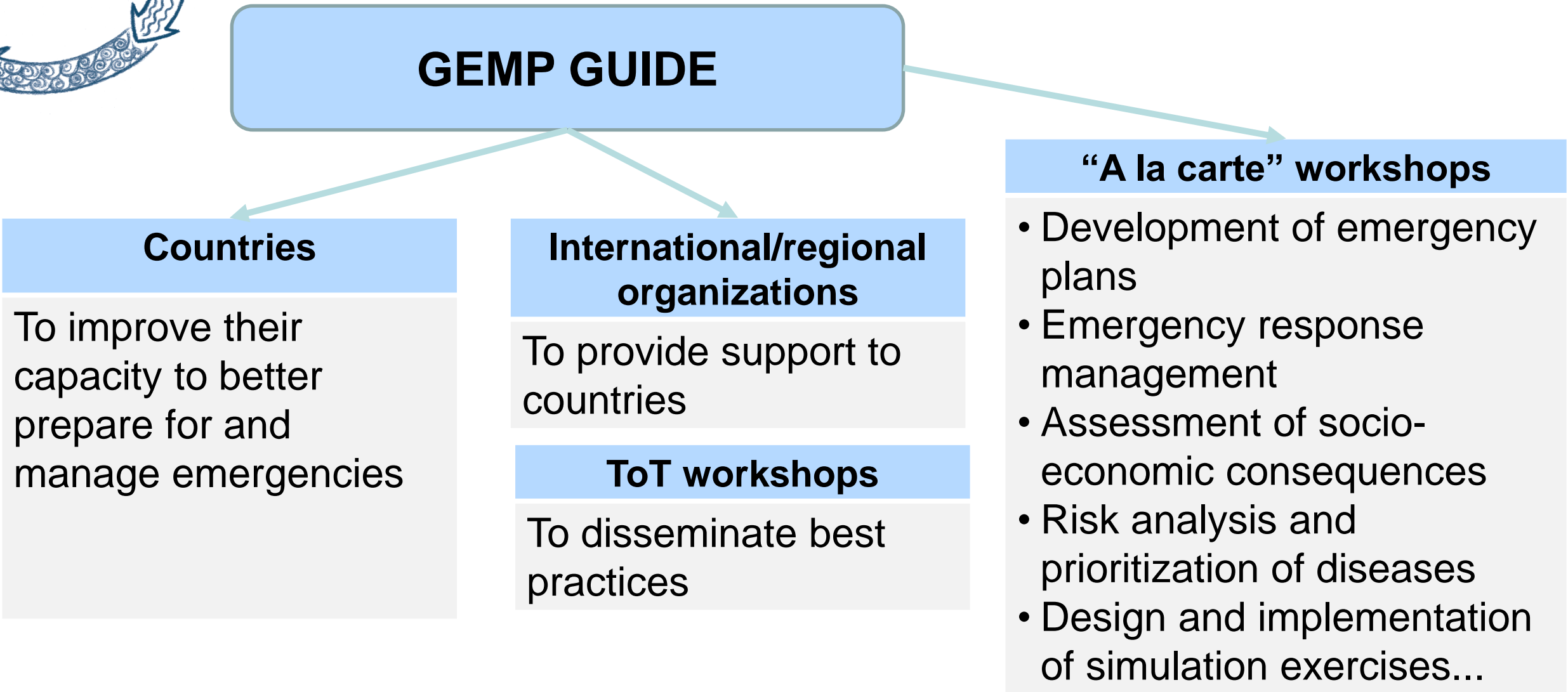
Epidemic Curve of Point Source Epidemic

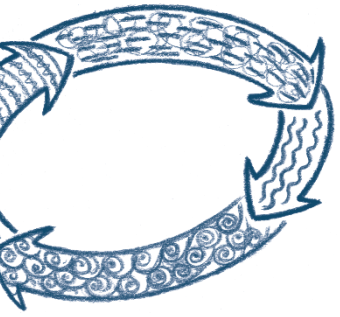


Apply actions to support emergency management throughout the epidemic curve



How is the GEMP used?



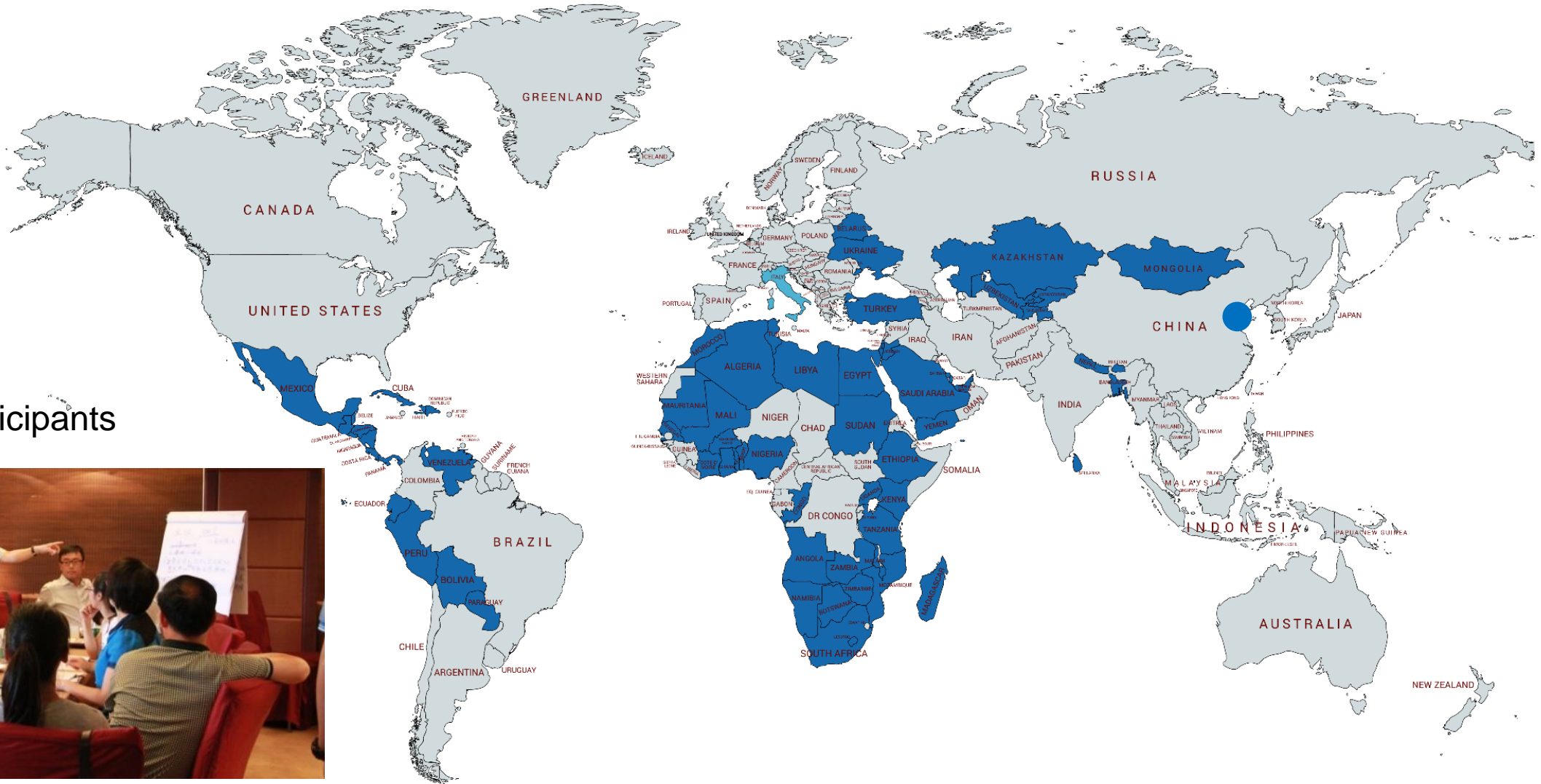
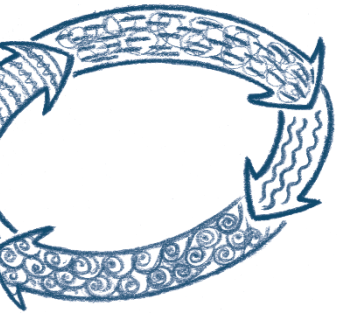


What is a GEMP workshop?

- Regional, national or provincial levels
- Two to three facilitators
- Around 15-25 participants
- Duration: three days structured around classroom presentations, group discussions and exchanges of experiences, (simplified) table-top simulation exercises
- Review of one existing contingency plan
- Certificates

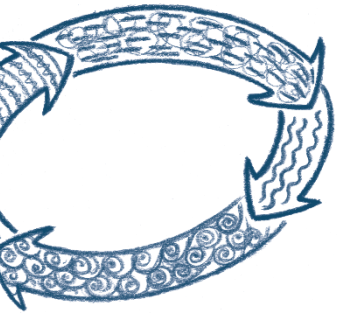


GEMP workshops since 2011



Total:
41 workshops
130 countries
Over 1 000 participants

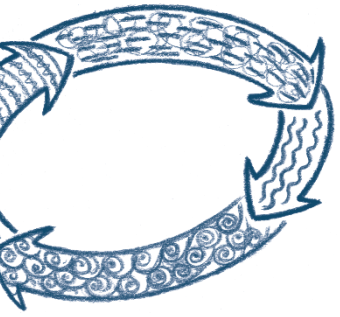




Impact of GEMP workshops

- Participants' preparedness and **capacity to manage** emergency disease outbreaks
- **Increased confidence** in the development of their contingency plans
- **Exchange of experiences** between local, regional, national and global bodies on managing Transboundary Animal Diseases (TADs)
- Sharing of expertise between **plant and animal health specialists** and in politically tense environment

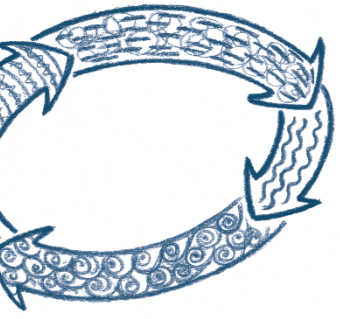




EMC-AH mandate

Provide **rapid response**
to transboundary animal diseases (TADs)
and emerging animal disease threats and **emergency management**
capacity building





What we do?...

Offer **technical and operational assistance** to help affected governments **to better prepare or respond to outbreaks** of animal diseases/**zoonotic diseases**



Emergency Management Centre
for Animal Health

GEMP

Good Emergency
Management Practice: The
Essentials

THANK YOU

Email EMC-AH: emc-ah@fao.org

Email presenter: Ludovic.Plee@fao.org