

Updates on African Swine Fever (ASF) in Hong Kong SAR

3rd Meeting of Standing Group of Experts on ASF for Asia
26 – 28 November 2019

Jeremy HO
Veterinary Officer



香港特別行政區漁農自然護理署
AGRICULTURE, FISHERIES & CONSERVATION DEPARTMENT, HKSAR

Background Information

Pig farms in Hong Kong

- 43 licensed pig farms rearing about 60,000 pigs at present while the total rearing capacity is 74,640 pigs. The sector employs some 220 farm workers. In 2018, a total of 106, 000 live pigs valued at 349 million were produced locally, accounting for **around 5%** of the total consumption in Hong Kong (by weight)
- Mainly small to medium-scale farms (77%): Small farms hold <1000 pigs; medium farms hold 1000 – 2000 pigs
- Farms are generally limited in space, facilities and technologies to implement strict hygiene and biosecurity measures
- The practice of **swill feeding** has been phased out since early 2019



Background Information

Import of live pigs

- Currently, around **95%** of live pigs consumed in Hong Kong are supplied from the Mainland China, with the remaining supplied by 43 local pig farms.
- Under the administrative arrangements with the Mainland, all imported live pigs must originate from **registered farms** approved by the General Administration of Customs of the People's Republic of China (GAC). Those registered farms have to attain the stipulated hygiene standards and have implemented detailed disease surveillance and control programmes supervised by on-farm veterinarians before they can be registered and approved for export into Hong Kong.
- Since the outbreaks in August, the GAC and the Ministry of Agriculture and Rural Affairs (MoARA) have been stepping up control at the Mainland farm level, with a view to ensuring disease-free supply from the source and preventing the disease from spreading.



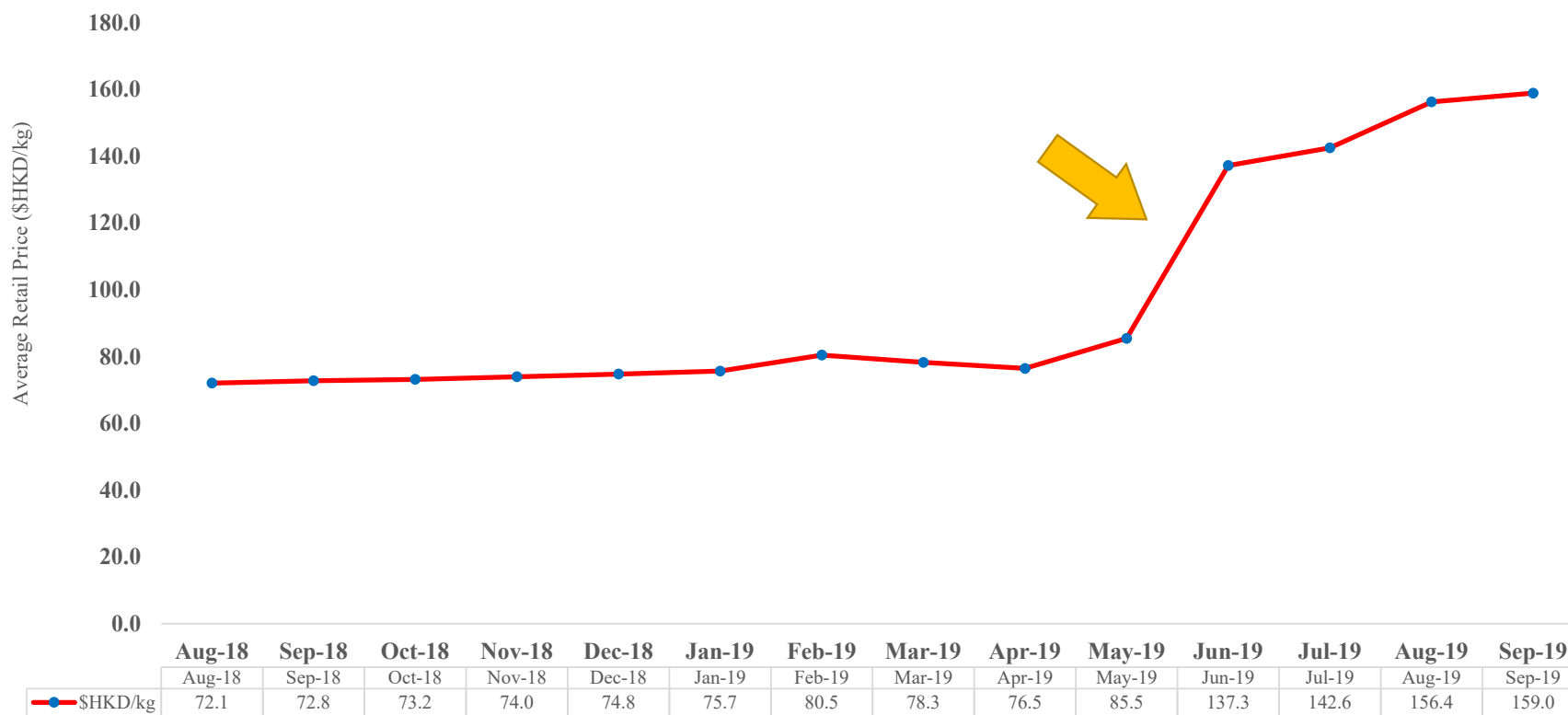
Disease Situation in Hong Kong

- ASF had been detected in pigs in three occasions (10 May 19, 31 May 19 and 03 Sep 19) in the slaughterhouse so far.
- Initial responses (first 2 outbreaks on 10 and 31 May 19):
Taking other countries' practices as precedent, in order to minimise the risk of ASF virus spreading from the slaughterhouse, all pigs in Sheung Shui Slaughterhouse were culled. The operation of the slaughterhouse had also been suspended until the completion of the disinfection work.
- Import of pigs and fresh pork supply was **dropped by more than half** since the first two occasions and has been remaining at low level with **marked increase of fresh pork price**.



Impact of ASF on Retail Price of Fresh Pork

Average Retail Price of Fresh Pork Lean Meat (Aug 2018 - Sep 2019)



Reference: Monthly Report on the Consumer Price Index, Census and Statistics Department, The Government of the Hong Kong special Administrative Region



香港特別行政區漁農自然護理署
AGRICULTURE, FISHERIES & CONSERVATION DEPARTMENT, HKSAR

Enhanced actions against ASF in the Slaughterhouses



Source Control
源頭控制



Disinfection pool for vehicles
進出車輛消毒池



Lairage disinfection
豬欄消毒



Ante-mortem inspection
宰前檢驗



Daily Clearance
日日清



Suspected cases
detained for further
inspection
扣留懷疑個案的豬隻
進行覆檢



Post-mortem inspection
宰後檢驗



Understanding the Control Measures against ASF

Youtube:

<https://youtu.be/EDfXd1vPmx0>



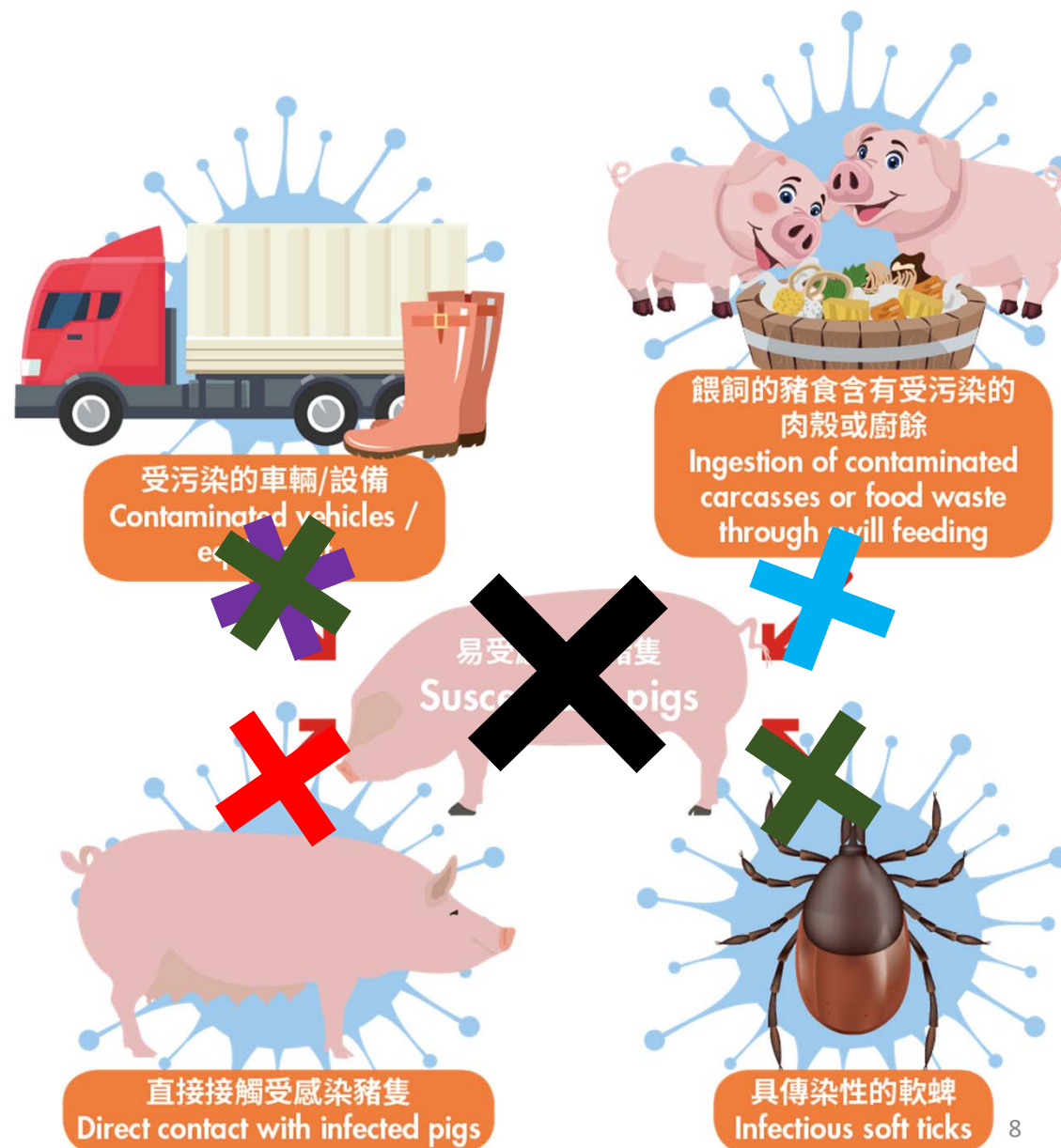
Facebook:

<https://www.facebook.com/CentreForFoodSafety/videos/811542709280191/>



Actions implemented:

- Ban on swill feeding
- Vehicles and equipment disinfection
- Lairage cleaning and disinfection
- Source control, ante-mortem and post-mortem inspections
- “Daily Clearance”



Culling or not when ASF outbreak detected in slaughterhouses in Hong Kong?

Considering that.....

1. Hong Kong is **heavily relied on import** of live pigs and pigs products (>95% of consumption) warranting **continuous** importation of live pigs from ASF endemically infected areas
2. No testing or quarantine system can guarantee all pigs imported to Hong Kong will be free from ASF virus
3. It is **not cost-effective and logistically feasible** to test every pig or pork product. Even if all pigs are tested, some infected pigs could be at incubation period and could not be detected if tested prior to arrival.
4. Any food waste with potential content originated from infected pigs does not pose a direct hazard to local pigs due to **ban on swill feeding**.
5. Culling and subsequent cleaning/disinfection incident resulted in cessation of fresh pork meat trade for about a week in Hong Kong, causing **significant economic and social costs for all stakeholders**
6. Unbearable significant socioeconomic consequences on **repetitive culling**
7. Implementation of “**Daily Clearance**” in slaughterhouses
8. **ASF is NOT a zoonotic disease** and therefore would not pose food safety risks for human consumption

Complete culling is considered **NOT necessary** for ASF outbreak in slaughterhouses in Hong Kong
- 3rd occasion (3 Sep 2019)



Further Actions

Further Risk Mitigation Measures

- Introduction of a pig collection point where local farmers would take their pigs and they would then be transferred from there to slaughterhouse.
- Substantial improvement on biosecurity of local pig farms
- Additional pre-entry inspection at Mainland farm and at border by officials for clinically sick pigs will reduce the likelihood of sick pigs entering the slaughterhouses.
- Further enhance sharing of ASF information between Mainland China and Hong Kong to assist in reducing the likelihood of infected pigs being imported. This information can also be used when conducting additional scientific risk assessments.

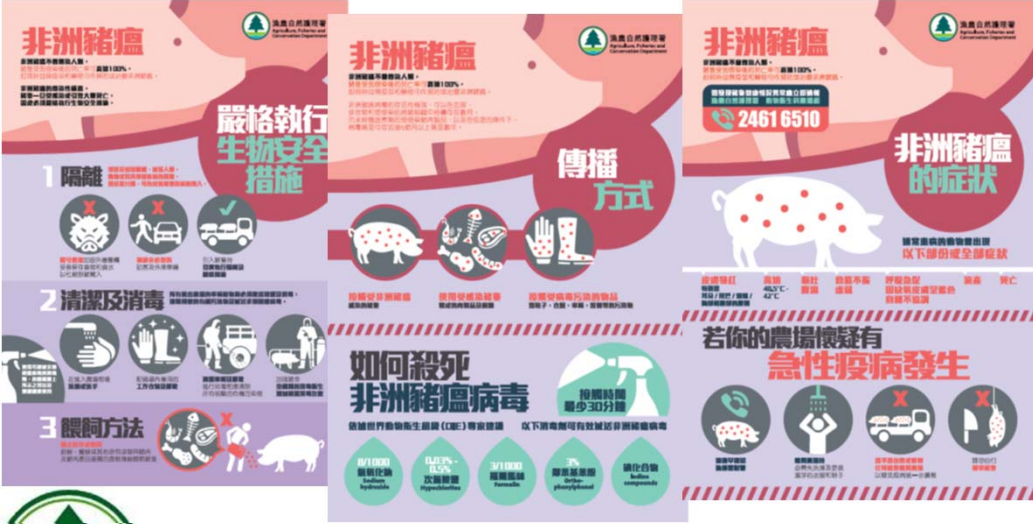
Restocking strategies

- Maintain close liaison with Mainland China authorities on increasing supply of live pigs
- Explore feasibility of importing live pigs from other places





Thank you!



香港特別行政區漁農自然護理署
AGRICULTURE, FISHERIES & CONSERVATION DEPARTMENT, HKSAR

